

# SPEEDFACE+ SERIES

Face & palm access control readers +  
Body temperature & Mask detection



SpeedFace + is a series of high performance face, palm, and fingerprint recognition readers that additionally detect if a person has acceptable body temperature and is wearing a protective mask.

The SpeedFace + embedded face & palm recognition sensor provides 100% touchless user authentication for various applications including Access Control, Time & Attendance, Visitor Management, Event Management, and more.

Model SF1008+ can store and match up to 50,000 faces in less than 0.3 seconds while operating in both total darkness and bright sunlight (up to 50,000 Lux).

## Body Temperature & Mask Detection

In addition to providing face, palm, and fingerprint user authentication, SpeedFace+ protective mask is being worn. Users can be denied door access if an unacceptable body temperature or if no mask is detected.

The ability to quickly & accurately identify people having unacceptable body-temperature or not wearing a masks is becoming increasingly important for airports, schools, commercial office buildings, and other public meeting areas.

People having unacceptable body-temperature and their supervisors can then take appropriate action. SpeedFace+ combines a powerful embedded thermal camera and ZKTeco's latest face, palm, and fingerprint recognition algorithms that are supported by an optimized dual-core processor. SpeedFace+ is unmatched in accuracy, matching-speed, and versatility. It provides advanced security and convenience, all on a single affordable device.

# FEATURES:

- User authentication read range up to 8 feet
- Model SF1008+ stores & matches up to 50,000 face templates (SF10052-V+, 6,000)
- Face verification possible while wearing protective mask (palm recognition advised)
- Model SF1008+ can store & match up to 5,000 palm templates (SF1005-V+, 3,000)
- Model SF1005-V+ additionally stores and matches up to 10,000 fingerprint templates
- Model SF1008+ has an 8" programmable touchscreen display (SF1005-V+, 5" display)
- Intelligent energy-saving design
- Dual-lens IR & VL camera recognizes faces in both total darkness and bright sunlight (<50,000 Lux)
- Body-temperature detection accurate up to 0.6 F from up to 18" away

# SPECIFICATIONS:

## Capacity (model SF1008+)

Faces: 50,000 | Palms: 5,000

## Capacity (model SF1005-V+)

Faces: 6,000 | Palms: 3,000

Fingerprints: 10,000

## Compatibility

Wiegand Input Panels

Wiegand Output readers

ZKBioSecurity Software

ZKTeco Security Relay Box (SRB)

## Hardware

900 MHz Dual Core CPU

512MB RAM/ 8G Flash

8" or 5" Touch Screen Display

2MP WDR Camera

Distance Detection Sensor

Reset Button & Tamper Switch

## Access Control Interface

Lock Relay Output

Alarm Output / Auxiliary Input

Exit Button / Door Sensor

## Special Functions

0.3s Face Recognition Speed

Liveness Detection

Event Snapshot

## Standard Functions

Access Levels, Groups, Holidays

DST, Duress Mode (password)

Anti-Passback, Record Query

Tamper Switch Alarm

## Temperature Detection

Temperature Accuracy: +/- 0.6°F

Temperature Distance: 18 inches

Protective Mask Detection

## Communication

TCP / IP

RS485

Wiegand Input / Output

Optional Wi-Fi

## Additional Info

Face Algorithm: ZKLiveFace 5.8

Working Temp: -22°F to 140°F

Easily change display from °F to °C

Working Humidity: ≤ 93%

Storage Temp: - 40°F to 169°F

Storage Humidity: ≤ 93%

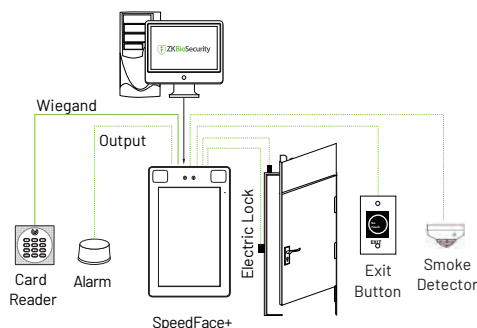
Net Weight: 1.5 lbs

Size (HxLxD): 8.9 x 5.6 x 1 inch

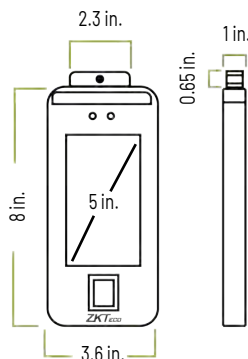
**Power** Operating Voltage: 12V DC

Current Draw: < 2,000mA

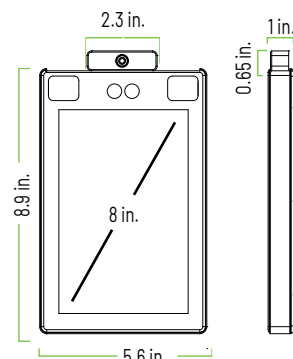
# CONFIGURATION:



# DIMENSIONS:



Model SF1005-V+



Model SF1008+

## ZKTeco USA

1600 Union Hill Rd., Alpharetta GA 30005

Phone: (862) 505 - 2101 • Fax: (862) 204 - 5906 • sales@zktcouusa.com • www.zktcouusa.com

© Copyright 2020, ZKTeco Inc. ZKTeco Logo and ZKTeco USA Logo have registered trademarks of ZKTeco or a related company.

All other product and company names mentioned are used for identification purposes only and maybe trademarks of their respective owners.

All specifications are subject to change without notice. All rights reserved.