

DRY WOODLAND GARDEN

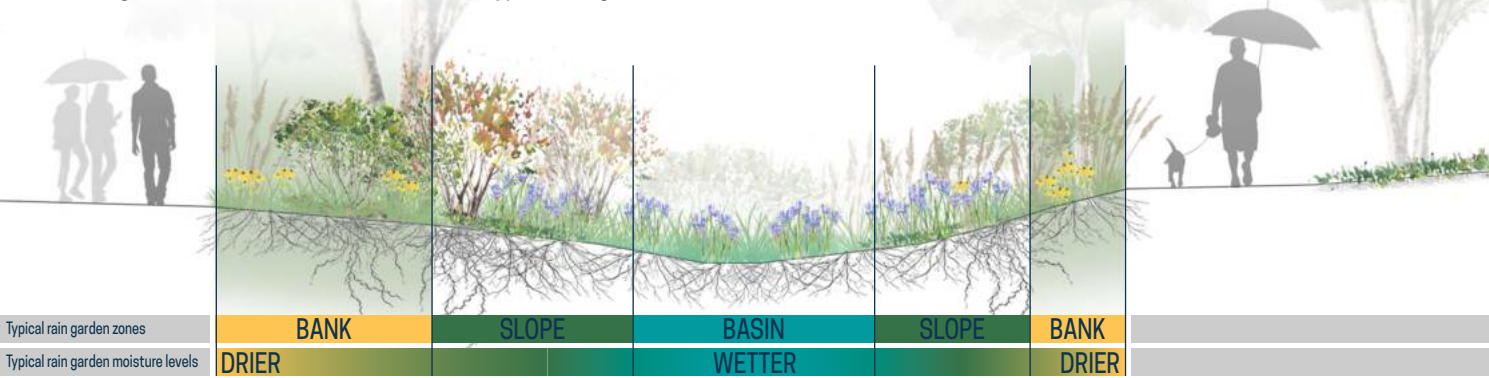
Shaded areas of the yard can be challenging places for grass to grow. Luckily, Illinois has dozens of native plant species that thrive in shade. Instead of a traditional lawn, consider shade-loving groundcovers, like sedges and ferns. For interest, add other shade plants that are taller and bloom. This guide features a planting plan focused on natives typically found in dry Illinois woodlands. The plan creates year-round interest for homeowners and extends the foraging season for pollinators. Additionally, native plants help soak up rainfall and can be used in rain gardens. For more information, visit the University of Illinois Extension Horticulture website: extension.illinois.edu/global/horticulture.

ADDITIONAL PLANTING OPTIONS

SPACING OPTIONS: If you have more space, duplicate the planting plan located on the inside of this brochure. For less space, consider these two smaller options for 4' x 10' Dry Woodland Garden beds:



RAIN GARDEN OPTIONS: The plants in this brochure are all shade-loving species that prefer dry soils. For placement in a shaded rain garden, they are best suited for high banks. See the cross-section of a typical rain garden for recommended locations.



WHERE TO FIND PLANTS AND MORE INFORMATION

The plant palette is inspired by the Red Oak Rain Garden: redoakraingarden.org. The Illinois Native Plant Society webpage lists sources of native plants: illinoisplants.org. For more information about plants, see the University of Illinois Extension Horticulture website.

PUT YOUR NATIVE PLANT GARDEN ON THE MAP

You can be part of a network of native plantings by registering your Illinois native plant garden or rain garden. This helps build community and encourage native plant use. Add your native plant garden to the map: go.illinois.edu/GardenMap.

ACKNOWLEDGMENTS

Funding provided by Illinois Environmental Protection Agency and Illinois-Indiana Sea Grant.
Produced by C. Eliana Brown, University of Illinois Extension.
Researched and designed by Layne Knoche with contributions from Kate Gardiner, University of Illinois Extension.
Edited by Irene Miles, Hope Charters, Kara Salazar and Joel Davenport, Illinois-Indiana Sea Grant, Chris Enroth and Erin Garrett, University of Illinois Extension, Heidi Leuszler, Parkland College, and Karen Folk, East Central Illinois Master Naturalists.
IISG20-RCE-BRC-031



DRY WOODLAND GARDEN

NATIVE ILLINOIS PLANTS FOR DRY AND SHADED GARDENS

PLANTING PLAN FOR A 6' x 25' BED

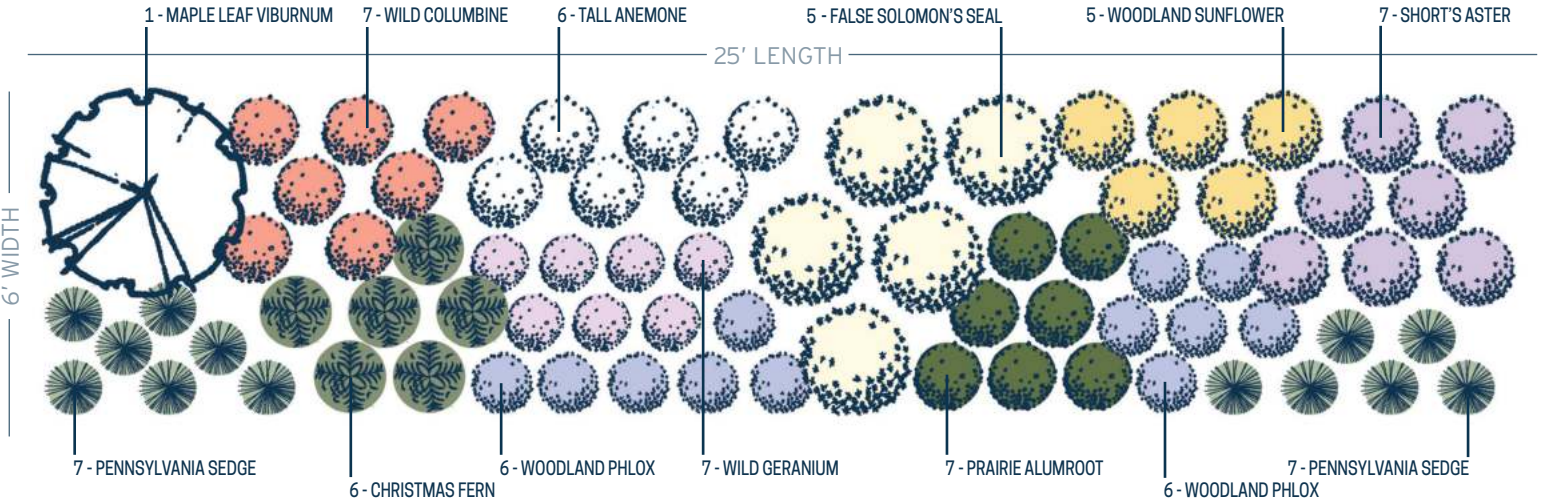
Category Common Name (Total quantity in design)

GROUNDCOVER: Pennsylvania Sedge (14), Wild Geranium (7), Prairie Alumroot (7), Christmas Fern (6)

SEASONAL: Woodland Phlox (12), Wild Columbine (7), Tall Anemone (6), Short's Aster (7)

STRUCTURAL: Maple Leaf Viburnum (1), False Solomon's Seal (5), Woodland Sunflower (5)

See the Red Oak Rain Garden Brochure for information related to the Groundcover, Seasonal, and Structural categories.



FORBS ORGANIZED BY BLOOM TIME

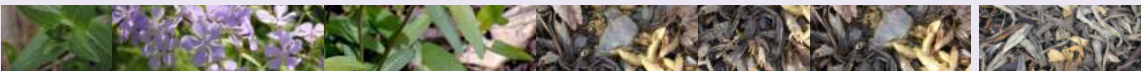
SPRING

SUMMER

FALL

WINTER

WOODLAND PHLOX
Phlox divaricata



WILD COLUMBINE
Aquilegia canadensis



WILD GERANIUM
Geranium maculatum



TALL ANEMONE
Anemone virginiana



FALSE SOLOMON'S SEAL
Maianthemum racemosum



PRAIRIE ALUMROOT
Heuchera richardsonii



WOODLAND SUNFLOWER
Helianthus divaricatus



SHORT'S ASTER
Symphyotrichum shortii



OTHERS ORGANIZED BY HEIGHT

PENNSYLVANIA SEDGE
Carex pensylvanica



CHRISTMAS FERN
Polystichum acrostichoides

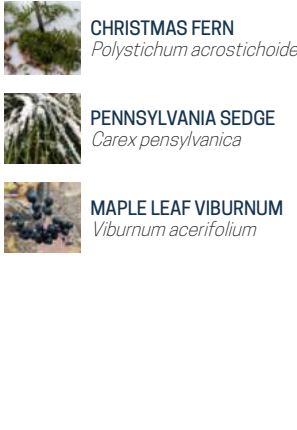
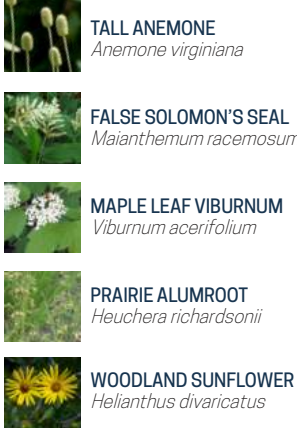
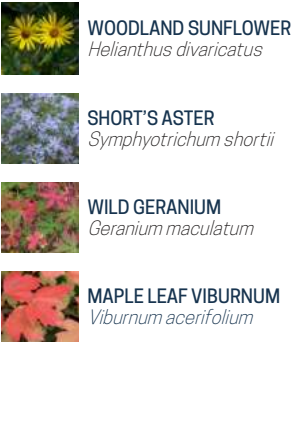


SHRUB

MAPLE LEAF VIBURNUM
Viburnum acerifolium



FOUR SEASON INTEREST



SUNLIGHT	HEIGHT	SPACING	MOISTURE	SOIL TYPE	COMMON ECOSYSTEM	ATTRACTIONS	DROUGHT TOLERANCE
	1'-1½'	1'-1½'		LOAM	WOODLAND		
	2'-3'	1'-1½'		SANDY, ROCKY	WOODLAND		
	1'-1½'	1'-1½'		LOAM	WOODLAND		
	1'-2½'	1'-1½'		LOAM	WOODLAND OPENING		
	2'-3'	1½'-2'		LOAM	WOODLAND		
	2'-3'	1'-2'		LOAM, CLAY-LOAM	WOODLAND OPENING		
	2'-6'	1'-3'		LOAM, CLAY	WOODLAND BORDER		
	2'-3½'	1'-2'		LOAM, ROCKY	WOODLAND		
	½'-1'	½'-1'		LOAM	WOODLAND		
	1½'-2½'	1'-2'		LOAM, ROCKY	WOODLAND		
	2'-4'	2'-3'		ACIDIC LOAM	LOW WOODLAND		

Some of these species freely self-seed if seed heads are left standing post-bloom. If this is an issue, remove spent flowers and seed heads. Some plants may migrate from one location to another over time. If this is not desired, transplant them back to preferred locations.

SOURCES
ILLINOIS WILDFLOWERS - illinoiswildflowers.info
PRAIRIE MOON NURSERY - prairiemoon.com
GARDENER EXPERIENCE

LEGEND

PART SUN
 SHADE

MOIST SOIL
 MESIC SOIL
 DRY SOIL

ATTRACTS BEES
 ATTRACTS HUMMINGBIRDS
 ATTRACTS BIRDS

ATTRACTS A VARIETY OF BUTTERFLIES
 ATTRACTS MONARCH BUTTERFLIES
 CATERPILLAR HOST PLANT

DROUGHT TOLERANT
 SEMI-DROUGHT TOLERANT
 NOT DROUGHT TOLERANT