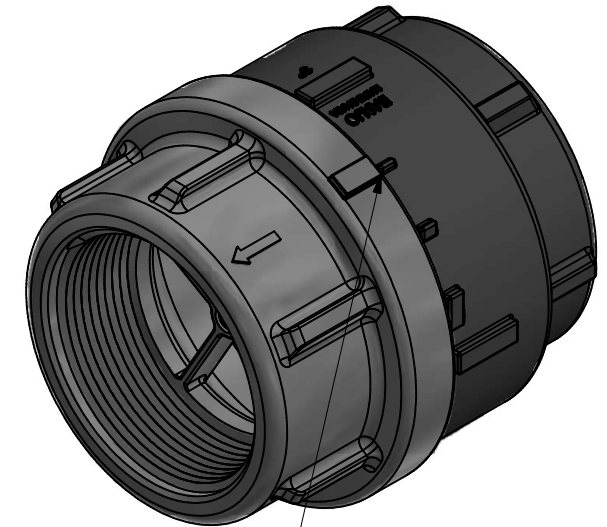
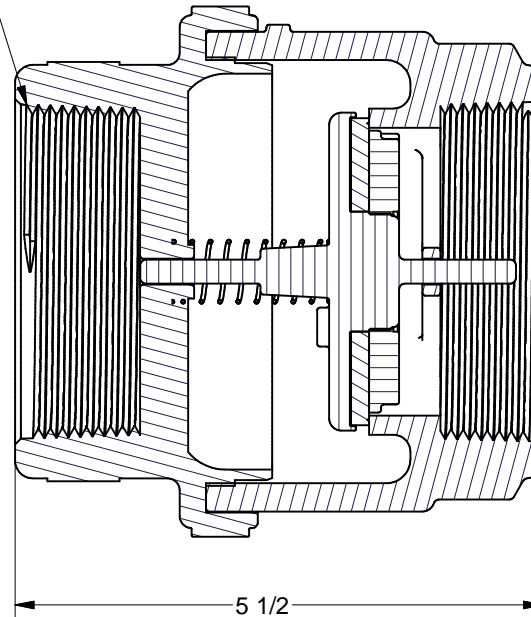
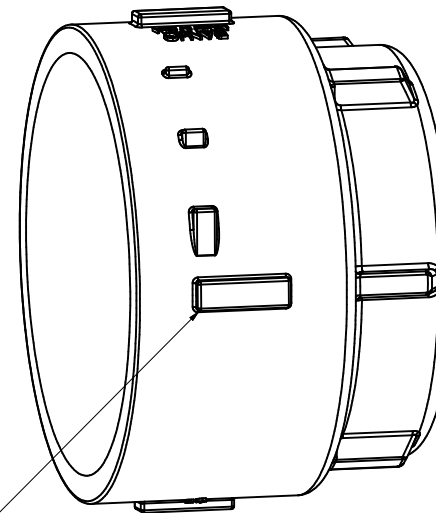
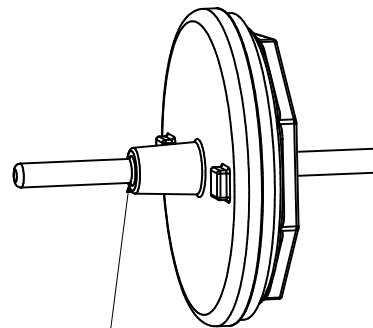
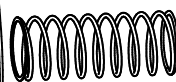
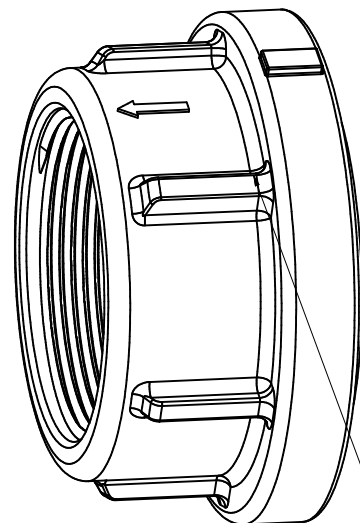


3" NPT



LUG TO BE ALIGNED  
WITH 1ST NOTCH

NOTE:  
1/2 LBF SPRING  
POPPET RELEASE LESS THAN 1/2 PSI



Parts List			
ITEM	QTY	PART NUMBER	DESCRIPTION
1	1	CV10005	PSI DECAL (N/S)
2	1	CV21505	CV 1/2 LBF SPRING
3	1	CV30054	3" NPT FEMALE CV BODY HALF
4	1	CV30055A	3" FP POPPET ASSEMBLY
5	1	CV30056	3" NPT MALE HALF CV END PLATE
6	1	VL1004	EPDM DECAL (N/S)

THIS DRAWING AND ALL  
INFORMATION CONTAINED THEREON  
ARE THE EXCLUSIVE PROPERTY OF  
BANJO CORPORATION.

UNLESS SPECIFICALLY NOTED, THIS  
DRAWING AND ITEMS SHOWN ON  
THIS DRAWING ARE SUBJECT TO  
CHANGE AT ANY TIME.



BANJO CORPORATION	
150 BANJO DRIVE, CRAWFORDSVILLE, IN 47933	
WEB SITE: WWW.BANJOCORP.COM	
E-MAIL: SALES1@BANJOCORP.COM	
DESCRIPTION	3" NPT CHECKVALVE
PART NUMBER	CV301



This document was created with the Win2PDF "print to PDF" printer available at  
<http://www.win2pdf.com>

This version of Win2PDF 10 is for evaluation and non-commercial use only.

This page will not be added after purchasing Win2PDF.

<http://www.win2pdf.com/purchase/>