

ARTSTREAM'S GAITHERSBURG THEATER COMPANIES PRESENT:

INCLUSIA and JOURNEY HOME: A SPACE STORY

FEATURING GAITHERSBURG THEATER COMPANIES A AND B

MAY 13-15 & 20-22, 2022

FRIDAYS AT 7:30 PM, SATURDAYS & SUNDAYS AT 2:30 PM

BENDER JCC OF GREATER WASHINGTON

6125 MONTROSE RD, ROCKVILLE, MD 20852

JUNE 15, 2022, AT 7:30 PM

FILMED PREMIERE | ONLINE VIA ZOOM



SAFEWAY
Foundation

PAUL M. ANGELL
FAMILY FOUNDATION

arts & humanities

MSAC

Jack R. Anderson



ArtStream, Inc. is a 501 (c)(3) nonprofit arts organization, supported by individual donors and by funding from the Montgomery County Government and the Arts and Humanities Council of Montgomery County, and by the Maryland State Arts Council, on the web at msac.org/recognizing-our-grants. Additional funding comes from The Morris and Gwendolyn Cafritz Foundation.

Additional funding for the Cabaret Companies comes from Kristen N. Chou, ArtStream Board of Directors, Ning Solutions Inc.

ArtStream
FOUNDATION
EST. 2008



Theatre for an
Inclusive World

About ArtStream

ArtStream's classes, workshops, and performing companies fuel each student's imagination, creativity, and focus. And that's not all. Students improve communication and social skills and develop friendships. Newly discovered talents and capabilities improve self-esteem, poise, and confidence that extend into their daily lives. All ArtStreamers are valued for their creative contributions. ArtStream's demanding and very entertaining process encourages students to discover their creativity and strengths and perform with confidence!

"My son has many challenges with social situations, and making new friends is very difficult. I see a really positive change in him since he began this ArtStream class! He looks forward to the class and feels comfortable with the teachers. They are fabulous."
— Parent of a 20-year-old ArtStream student

Take a Performing Class

ArtStream offers performing arts classes for people with intellectual and developmental disabilities (IDDs) — including autism. You do not need to have any acting experience to take a class.

Learn about our current classes or register for an upcoming class today.

Classes: www.art-stream.org/take-a-class

Join Our Monthly Super Social Saturdays

Practice being your best self in a group event setting. Show your skills, be silly, express yourself, practice positive social experiences, and dance!

Attend a Show



2022 PERFORMANCES

Upcoming Onstage Performances

Gaithersburg Theatre Companies

📅 May 13-15 & 20-22, 2022

🕒 Fri. at 7:30 pm

📍 Sat. & Sun. at 2:30 pm
Bender JCC of Greater
Washington

Silver Spring Theatre Companies

📅 June 10-12 & 17-19, 2022

🕒 Fri. at 7:30 pm

📍 Sat. & Sun. at 2:30 pm
Silver Spring Black Box
Theatre

Upcoming Video Performances

📍 Online via Zoom

Maryland & Virginia Cabarets Spring Companies

📅 May 23, 2022

🕒 7:30 pm

Gaithersburg Theatre Companies

📅 June 15, 2022

🕒 7:30 pm

Silver Spring Theatre Companies

📅 June 30, 2022

🕒 7:30 pm

Tickets

www.art-stream.org

(301) 565-4567



Get Involved
with ArtStream

Perform with **ArtStream**

Auditions for the Theatre Companies occur in the fall for shows the following spring. Cabaret Companies hold auditions in the fall and winter.

Theatre Companies

Actors develop and perform an original musical. The company votes on a theme, creates original characters, and improvises scenes. Scenes are then scripted to become an original one-act musical. Each performance presents two of these musicals in a double bill before a live audience.

Cabaret Companies

Actors agree on a theme for ensemble music and dance performances, and then each actor works with the choreographer and music director to develop solo and small-group music, dance, or drama performances.



Requirements to perform

- Be 18 years of age or older
- Have participated in at least eight weeks of ArtStream classes in the past two years

Reserve your spot

on the audition list by calling ArtStream at (301) 565-4567.

When there is space in the company, we will invite you to join us for an audition.



Bring ArtStream
to Your Community

CLASSES FOR YOUR Community

ArtStream's talented Teaching Artists lead a variety of workshops and classes for groups, schools, and private organizations. Classes are designed for people of all ages with intellectual and developmental disabilities (IDDs), including autism. Learning through the arts is empowering. Classes/programs build upon entertaining and demanding games that encourage participants to be creative, to pay attention to others, to listen, to respond, and to engage with others. Classes/programs foster social connections as participants practice communication skills like eye contact, listening, and self-awareness. In the process, participants build their confidence, discover their creativity and strengths, and expand their capabilities and self-awareness. All of this, and more, while having fun!

Programs include:

- ✓ Dance and movement
- ✓ Drama and storytelling
- ✓ Music
- ✓ Musical theatre
- ✓ Self-advocacy
- ✓ Workplace communication
- ✓ Public speaking

Contact ArtStream for more information and to design a class to fit your organization's needs. You can reach Program Manager Rachael Sutherland at r.sutherland@art-stream.org or 301-830-4588

"As a parent and professional in the field of developmental disabilities, ArtStream is one of my favorite programs to witness and collaborate with. Attendees are more comfortable with a variety of communication partners across all settings. Even our nonverbal friends benefit from ArtStream programming, as I've heard two young adults speak for the first time during an ArtStream class. My face hurt from smiling!! Thank you, ArtStream."
— Jenn Lynn, Executive Director, Upcounty Resources (UCR)

Support ArtStream



Donate

Tuition and ticket sales cover less than half of the cost of ArtStream's programs. Your donations make it possible for actors with intellectual and developmental disabilities (IDDs) — including autism — to perform on stage, feel empowered and respected, and actively engage in our communities.

- ☒ \$75 funds a full costume for one Theatre Company actor.
- ☒ \$300 underwrites a public speaking workshop for self-advocacy and pre-employment skills.
- ☒ \$1,000 sponsors an eight-week class such as Broadway Song & Dance, Shakespeare, Directing & Design.

Donate: www.art-stream.org/donate or mail a check to:
ArtStream | PO Box 75090 | Chicago, IL 60675-5090

Volunteer

Volunteers ages 13+ are needed to help in classes, backstage, and onstage.

Volunteers are eligible for Student Service Learning (SSL) hours, and ArtStream looks great on college applications!

Groups and families are welcome.

Volunteer: www.art-stream.org/who-we-serve/volunteer/

Questions? Reach out to Outreach and Volunteer Coordinator
Katie Mraz at k.mraz@art-stream.org for more information.

Advertise

To include your ad in our programs, please contact ArtStream.

Advertise: c.palmore@art-stream.org or visit our website
www.art-stream.org/advertise-with-artstream

INCLUSIA

Director's Note

Welcome back! Thank you for sharing this moment with us. We are so excited to be back onstage and performing in front of a live audience again! Theatre brings us together in a uniquely magical way. It shows that there really is no substitute for sharing space and energy together.

This year has been a challenge. Our actors and creative team navigated coming back into the rehearsal room in person for this first time in two years – only to be thrust back into Zoom land for all of January. We have gotten used to wearing masks and pushing ourselves to find new ways to express ourselves with our voices and bodies, and we have learned to blur the lines between being in-person and on screen as covid continues to throw us curve balls.

Our show is about technology and the real life need to work together in all formats. It's about listening, assuming the best in others, and making space for people to be multifaceted and complex. In a world where competition and forming factions is common, we explore what it means to work together and include everyone. How can technology – which so often separates us from each other – also be used to connect us? Can you really have collaboration without inclusion? Teamwork is dream work – but who is allowed to be part of the team? These are some of the big questions our group wanted to explore. We are grateful to be exploring them together in community and sharing our creativity and energy with a live audience again. Thank you for joining us on this journey as we get in the game!

~Kristen Pilgrim, Director

Tonight's Performance

Production Team

Director: Kristen Pilgrim

Assistant Directors: Pam Freedy
and Lisa Troshinsky

Music Director, Composer, Lyricist:
Wendy Lanxner

Choreographer: Shelley Fisher

Stage Manager/Props Master:
Heather Newhouse

Mentor: Natalie Mintz

Backstage Technician: Adam
Reinhold

Costume Designer:
Cheyenne Hill

Scenic Designer: Emily Pengelly

Lighting Designer: Stephen Deming

**Theatre and Events Manager,
Projections Designer:** Sarah
Sandifer

Cast

Tyler Brown as Maldragoso, a Villain

Benjamin Collins as Marty, a Player

Megan Cooper as Buffy, an Avatar

Shelley Fisher* as Sharice, an Avatar

Adrian Forsythe as Fegan, the Creator

Pam Freedy* as Evil Hannah, a Villain

Jessica Grossman as Rory, an Avatar

Peter Han as Barnabus, the Healer

Lindsay Howard as Kingsley, an Avatar

Mike Krempasky as Mr. Hypnosis, a
Villain

Wendy Lanxner* as Allegra, the
Computer

Matthew McMeekin as McFirefly

Natalie Mintz* as Helena, the
Assistant

Joe Myers as Sorcerer Stone, a Villain

James Richard as Rob, the Builder

Cindy Ring as Rose, a Player

Andrea Soltesz as Rajni, a Player

Adam Tepper as Jacob, a Villain

Lisa Troshinsky* as Juney, a Player

**Indicates Mentor*

JOURNEY HOME: A SPACE STORY

Director's Note

When we started the process of creating this show, I could see immediately how the last few years have influenced these performers as both artists and as people. Themes of self-sacrifice, difficult choices, and community all surfaced as we played with different topics and improvisations. As a director, I was exceedingly grateful that everyone was ready to work in a new way, asking deep questions and exploring complex topics. And at the same time, these performers prepared to face another ArtStream first; doing a show with no musical component. These actors have pushed themselves to play in a new way and I couldn't be more thankful to be their director. As a team, we hope to effectively ask the question; how to we form bonds and create connection, even when everything around us is different than we have ever known?

So, join us on a journey to the stars. We are grateful to have you on board with us.

I would like to thank the whole team for maneuvering through a year of many challenges, each one of them has owned this journey of creating art in new way with innovation, curiosity, and grace. I would also like to thank Sarah Sandifer for leading all of us with kindness and care. And lastly, I want to thank my husband Adam, who has seen every ArtStream show I've been a part of and supported this work during the nearly seven years I've been a part of ArtStream.

~Madeleine Regina, Director

Tonight's Performance

Production Team

Director:

Madeleine Regina

Assistant Directors: Pooja Chawla, Liv Dinter, and Maria O'Connor

Stage Manager, Costume Designer, Props Master:
McKenna Kelly

Props and Costume

Assistants: Fritz Hintze and Sarit Pearlman

Scenic Designer:

Emily Pengelly

Lighting Designer: Stephen Deming

Theatre and Events

Manager, Projections Designer:
Sarah Sandifer

Cast

Shelley Belgard as Aurora, the Nomad Leader

Pooja Chawla* as Bella, the Planetary Explorer

Kirsten Davidson as Star, the Inhabitant Doctor

Matt DiGilio as Cooper, the Motors Expert

Liv Dinter* as Stella, the Nurse

Andrea Geller as Angel, the Ship Doctor

Nader Khalaf as Sterling, the Astronomer

Joey Kitchelt as John Kelley, the Biologist

Terrel Limerick as Zero, a Food Cultivator

Shannon Lyons as Lucafia, an Alien Translator

Kathleen Maloney as Luna, an Alien Translator

Tanya Meyerson as Madam, the Linguistics Expert

Maria O'Connor* as Kit Otrera, the First Mate

Conor O'Shaughnessy as Elmer, a Food Cultivator

Cecelia Pauley as Jessica, the Planetary Specialist

Alexander "Al" Richardson as Levi, the Protections Specialist

Nmandi Thompson as Sky, the Ship Captain

**Indicates Mentor*

MEET THE CAST AND CREW OF

Inclusia



Tyler Brown (Maldragoso Dragomore)

Tyler is a 30-year-old actor from Germantown, Maryland. He auditioned with ArtStream after graduating high school and has had the “theatre bug” ever since. Tyler has worked at Wegmans since 2016 and enjoys his job as a grocery assistant/stock person very much. His hobbies include Lego building, traveling, golf, swimming, and home brewing with his brother. “I’d like to thank ArtStream, my friends and family for always being supportive.”



Benjamin Collins (Marty)

Benjamin is a 55-year-old actor from Rockville, Maryland. This is his sixteenth show with ArtStream! Before ArtStream, Benjamin acted at Rock Terrace High School and Imagination Stage. In a production of *The Big Friendly Giant* at Imagination Stage, he met ArtStream co-founder Nicolette Stearns. Benjamin works as an operations specialist at Special Olympics International in Washington, D.C. He is also a Special Olympics athlete in bocce and powerlifting, and he loves to participate in the annual Super Polar Bear Plunge with the organization. Benjamin has a great memory and loves trivia. “I love being with everyone in the company. Congrats to the cast!”



Megan Cooper (Buffy)

Megan is a 38-year-old actor from Rockville, Maryland. She has been acting with ArtStream since the first Inclusive Theatre Companies - this is her sixteenth show! Megan’s love for dancing and acting blossomed through performances at Imagination Stage many years ago. In addition to performing, Megan is also an author. She co-authored the children’s book *The Colorful Adventures of Pauline and Tiff* with ArtStream co-founder Nicolette Stearns. Megan lives independently and works at the National Capital Area YMCA. She is very active in community activities, including Special Olympics. She competes in cross-country skiing, sailing, swimming, basketball, and track, earning medals at the Special Olympics World Games in China (sailing), Austria (cross-country skiing), and Idaho (cross-country skiing). “I am so overjoyed to see my ArtStream friends in person again!”



Shelley Fisher (Choreographer; Sharice)

Shelley has a heart for the performing arts! She currently is a dance and drama instructor at a private academy and teaches dance classes and serves as a choreographer at Imagination Stage. Some of her most rewarding moments come from serving as the choreographer for Gaithersburg Company A. "Now everyone put your hands to your mouth and yell out loud, 'Go Gaithersburg Company A!!'"



Adrian Forsythe y Korzeniewicz (Fegan)

Adrian is currently leading a hangout for middle school kids. His ambitions are to be an advocate for people with disabilities, create his own business, and be an actor. He graduated from the George Mason LIFE Program with concentrations in theater and communications. At George Mason, Adrian appeared in plays, worked backstage, and joined several student theater groups. Adrian has extensive work experience, ranging from interning at the Smithsonian Institution with Project Search to a Congressional internship on Capitol Hill. Adrian is a trained peer mentor with Project STIR. Adrian works for TerpsExceed as a peer advocate specialist. With ArtStream, Adrian was a client liaison on the board, participates in the Gaithersburg Theater Company A, and leads communication and community workshops.



Pamela Freedy (Assistant Director; Evil Hannah)

Pamela is a theatre director, performer, and teacher with a keen curiosity for exploring intersections of civic dialogue and fantastic community imaginations through the arts. She is happiest in the theatre classroom, having spent nine years as a theatre educator in schools and as a teaching artist in a variety of community settings. Pam holds her BA in Theatre Education from the University of New Hampshire, her graduate teaching certificate in K-12 Theatre Arts from the University of North Carolina – Charlotte, and a Masters in Applied Theatre from the Royal Central School of Speech and Drama in London, England.



Jessica Laura Grossman (Rory)

Jessica is an ArtStream actor living in North Bethesda, Maryland. In addition to ArtStream, Jessica has appeared onstage at Rock Terrace High School in *The Secret Garden* (Mary), *The Wizard of Oz* (Ms. Gulch, the Wicked Witch), *A Christmas Carol* (Ghost of Christmas Past), and *Annie* (Miss Hannigan). This is Jessica's eighth ArtStream show! Her experience with ArtStream has been very good. She learns a lot about herself while having fun. "I want to thank Mom, Amy, Andrew, and Liz for their support and encouragement throughout my ArtStream experience."



Peter Han (Barnabus)

Peter is from Rockville, Maryland. He joined the Gaithersburg A Inclusive Theatre Company in 2018. In addition to Peter's ArtStream experiences, he served as a Party Guest for four seasons in Chamberlain Performing Arts' *Nutcracker* in Richardson, Texas, plus has been thrilled to present skits in various talent shows. During the day, Peter is proud to be working part-time at TopGolf in Germantown, and participates in the Supported Employment program at the Kennedy Institute of Catholic Charities in Rockville. In his spare time, he enjoys neighborhood walks, puzzles, SPIRIT Club classes, Special Olympics bowling, and movie watch parties with his sister. Peter is excited for his fourth season with ArtStream's Inclusive Theatre Companies, and is very grateful for the support of his fellow cast members, ArtStream staff and volunteers, plus his family and friends!



Lindsay Howard (Kingsley)

Lindsay grew up in Bethesda but now lives in Rockville. While in Bethesda, she performed with BAPA (now Imagination Stage) and has been in ArtStream from the beginning. She loves singing and dancing and all the friends she has made through the years there. She went to Walter Johnson High School and then to the Vocational Independence Program at New York Tech in Long Island. During the day, Lindsay works in the Day Care Center at NIH. Lindsay is a huge sports fan. She is active in karate, both in taking classes and teaching. She now has earned a blue belt. Her two favorite sports teams are the Nationals and the Caps.



Mike Krempasky (Mr. Hypnosis)

Mike is a 38-year-old actor from Olney, Maryland. This is his seventh show with ArtStream. Mike attended Sherwood High School where he sang in the chorus for three years and performed in Rock-n-Roll Revival for two. Mike attends Community Support Services, where he receives job support and training. Mike enjoys computers and would like a computer job one day. He loves watching football and playing video games. Every year he plays on a basketball team. Mike also enjoys bowling and is a First-degree brown belt in karate. "I have enjoyed acting with ArtStream, from the first day I started."



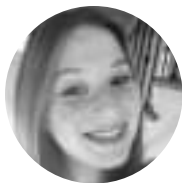
Wendy Lanxner (Music Director; Allegra)

Wendy is a Washington area teaching artist and arts in health practitioner. She is Musician in Residence at Johns Hopkins Children's Center, and provides programming through several agencies including Arts for the Aging and Washington Performing Arts. Wendy is also a music director with Lumina Studio Theatre, plays bass with the band Wendy & the Lost Boys, and volunteers in hospital settings through Musicians on Call. She received a Master's in Music Education from the University of Florida. Wendy is thrilled to be working with such wonderful actors at ArtStream! wendylanxner.com musicinhealth.net



Matthew McMeekin (Farley McFirefly)

Matthew is a 43-year-old actor from Bethesda, Maryland. He started with ArtStream as Old Green Eyes in Saving the Starlight, performed at the Arts Barn in the 2006-2007 season. He has performed in ArtStream plays at Blackrock Center for the Arts, Rosborough Center Theatre, the Olney Theater, and Bender JCC of Greater Washington. Matthew misses his 6 a.m. swim practices but will soon be back to doing laps before going on Zoom for classes at Opportunities, Inc. Matthew loves all his hobbies, which include singing, whistling, acting, swimming, listening to music, and learning foreign languages (he speaks French, Spanish, and German fluently, and can order a meal in Chinese). He is so happy to be back at ArtStream "for real" and is anxious to do all his other activities in-person rather than online. "Thanks for all the support I've gotten from the ArtStream directors, mentors, and fellow actors through the years."



Natalie Mintz (Mentor; Helena)

Natalie is a senior at Richard Montgomery High school. This is Natalie's first year with Art Stream, and she serves as a cast member and mentor. She is so excited to be a part of this amazing organization and cannot wait to show off the talented cast!



Joe Myers (Sorcerer Stone)

Joe is a 36-year-old actor from Kensington, Maryland, currently living in Rockville, Maryland. Joe has been an actor with ArtStream since the beginning, making this his sixteenth ArtStream show! Before that, Joe was an actor with Bethesda Academy of Performing Arts (now Imagination Stage). Joe is the front desk receptionist for Community Services for Autistic Adults and Children (CSAAC). He enjoys dancing Zumba at the Rendezvous Studio in Rockville.



Heather Newhouse (Stage Manager)

Heather has been stage managing with ArtStream for seven years and loves the creative, collaborative atmosphere of Company A—as well as the interesting props she gets to make from year to year! She currently works at Folger Shakespeare Library as the Patron Services Manager. Heather would like to thank everyone in ArtStream for being so supportive and inspirational. “Break a leg, friends!”



Kristen Pilgrim (Director)

Kristen is a drama therapist, who was inspired by her work as a teaching artist with ArtStream to go into that field. She has a Master's Degree in drama therapy from Lesley University. She began teaching with ArtStream in 2012, directing the George Mason ArtStream group. Since then, she has also taught Shakespeare and Improv classes at Oakton and is excited to be back with Gaithersburg Company A, finally getting to put our show onstage! Kristen is a local director, actor, and fight choreographer in the DMV region and is an advanced actor combatant with the Society of American Fight Directors. She is a teaching artist with several other companies including Educational Theatre Company and Traveling Players Ensemble. “Big thanks to everyone in Company A, GMU, and the whole ArtStream team!”



James Richard (Rob the Builder)

James is a senior in high school and currently resides in Clarksburg, Maryland. This is his acting debut with ArtStream. When he isn't acting or attending school, he enjoys watching movies, playing video games, listening to music, cooking with his family, swimming, going to the park, and spending time at the beach. "I am so excited to be a part of Company A and the ArtStream family. Thank you for welcoming me."



Cynthia Ring (Rose)

Cynthia is a 53-year-old actor from Rockville, Maryland. She originally hails from St. Louis, Missouri, and attended Rock Terrace High School. Cynthia has acted with ArtStream since the first year of Inclusive Theatre Companies. This is her sixteenth show! She is an avid Special Olympics athlete in track and bowling. She is also a proud part of the Best Buddies program, and she goes out with ACIDD two or three times a month. Cynthia loves attending social dances and going out with friends. She is grateful that her sister comes every year to watch the shows. "Thank you to my sister and her husband and my nieces."



Andrea Soltesz (Rajni)

Andrea is an ArtStream actor. This is her seventh show! Andrea works at Giant. She has been there for 17 years and loves her job. Andrea is a dedicated actor. She reads her script every day because she loves being in the play. Andrea also enjoys dancing and Zumba. "ArtStream helps make me feel proud of myself! It's fun to act on stage and screen!"



Adam Teppner (Jacob)

Adam has performed with ArtStream since 2007. Adam also performed with the Bethesda Academy of Performing Arts (now Imagination Stage) and in the Summer Theater Arts for Youth Program at the Bender JCC of Greater Washington. His favorite roles include Jay Bird in *Honk* and Agwe in *Once on This Island*. In his spare time, Adam participates in Special Olympics swimming, basketball and tennis. Adam also enjoys watching the Washington Capitals and Nationals. "Hope everyone enjoys the show- BOOO!"



Lisa Troshinsky (Assistant Director; Juney)

Lisa has a background in dance and theater, having been in dance companies and community theater in the D.C. area. She is also a theater reviewer for The Washington Diplomat.

MEET THE CAST AND CREW OF

Journey Home:

A Space Story



Shelley Belgard (Aurora, the Nomad Leader)

Shelley has been participating in ArtStream since its inception. To this day, she wows dinner parties and events with her Sweet Sweet of Heaven Pie, inspired from the production *It's A Wonderful Pie!* Outside of ArtStream, Shelley loves to practice her singing and dancing, as she is enthused by many Disney musicals such as *Encanto*, *Lemonade Mouth*, and *Z-O-M-B-I-E-S*. Shelley is also an athlete with Special Olympics of Maryland. In the past, she has participated in Track & Field and Karate. This year, she won a Silver medal for her outstanding efforts in bowling. In her free time, she loves going for runs on the treadmill, trying new restaurants with her husband, and spending time with her family - especially her young nieces and nephews. Shelley would like to give lots of love to her husband and his family, her brothers and their families, her parents, and to her niece and nephews.



Pooja Chawla (Assistant Director; Bella, the Planetary Explorer)

Pooja is an actress, playwright, and owner of a small theater arts education company for kids in Montgomery County and Northern Virginia. She has thoroughly enjoyed her first time working alongside the talented artists at ArtStream. She's most recently known for her role as Marianna in *What It Means to Choke* at Keegan Theatre as well as Fatima in the remount version of *The Princess and the Pauper* at Imagination Stage. When she's not acting, Pooja loves to create her own world of characters. Her first full-length play, *A NEW HEART*, was featured in 2018's Page-to-Stage Festival at the Kennedy Center.



Kirsten Davidson (Star, the Inhabitant Doctor)

Kirsten is an ArtStream actor from Rockville, Maryland, who has been acting with ArtStream for 16 years. She receives residential support services from the Jubilee Association of Maryland and employment support services from SEEC. She is active with Jubilee, SEEC and Spirit Club activities. Kirsten served on the ArtStream Board of Directors as Client Liaison from 2018-2019. She enjoys Zoom Sibling meetings with ArtStream and other Zoom activities with Jubilee and SEEC. She likes listening to music, dancing, traveling, eating out, and spending time with family and friends. "Thanks to my parents, sisters, and ArtStream directors and mentors for all their support. I LOVE ArtStream!"



Matt DiGilio (Cooper, the Motors Expert)

Matt is a 32-year-old actor from Rockville, Maryland. He joined ArtStream in the fall of 2019, and is on his third performance on the ArtStream stage/screen! Matt works for Montgomery County Government in Rockville as an Administrative Aid. He plays basketball, softball, soccer, and bowling. He also likes going to baseball games, listening to music, biking, and hanging out with friends. He is very grateful to be a part of ArtStream and appreciates all the support from his family and friends.



Liv Dinter (Assistant Director; Stella, the Nurse)

Liv is a Baltimore-based creative with a background in theatre and communications. They graduated from Stevenson University in 2021 with a degree in Theatre Performance and have since collaborated with The Everyman Theatre, Skylight Theatre Labs, and now ArtStream in various roles. They are positively thrilled to expand their repertoire and continue to work with ArtStream's incredible team and actors!



Andrea Geller (Angel, the Ship Doctor)

Andrea is an exuberant actress with many seasons under her belt at ArtStream. At home, Andrea is an avid reader and loves to dance. She has been working at NIH as a mail clerk for over 25 years, and loves that she gets to converse with everyone who works in her building. More recently, Andrea spent time volunteering at Spirit Club, a local gym that is catered to serving folks with disabilities. Andrea is also a Special Olympics athlete - this year she earned a gold medal for her impressive performance in bowling. Andrea is known for her friendly demeanor, you can always catch her making conversation with her neighbors at her apartment building, and with her friends here at ArtStream. Andrea sends thanks to everyone at ArtStream for helping her with her lines!



McKenna G. Kelly (Stage Manager/Costume Designer/Props Master)

McKenna is a stage manager with ArtStream. This is her ninth ArtStream show, and she is no stranger to theatre. Since grade school, McKenna worked in some capacity of theatre — whether in acting, costume design, make-up design, properties, scenic painting, booking, front of house, backstage crew, or stage managing — for well over 50 productions. “I am very excited and thankful to be a part of this production!”



Nader Khalaf (Sterling, the Astronomer)

Nader is a 28-year-old actor from Bethesda, Maryland. This is his fifth year performing with ArtStream Gaithersburg Company. Nader also performs as a member of the InterPlay Inclusive Orchestra. Nader works part-time jobs at the Rio Marriott Hotel and at his neighborhood Carderock Swim and Tennis Club. Nader competes in swimming, soccer, basketball, and tennis with the Special Olympics. He is very sociable and enjoys talking about landscaping and politics. He spends a lot of time with his cat, Marble; surfing the internet and on Facebook; caring for his yard; and operating his outdoor equipment. “I enjoy acting and am so happy that I made new friends at ArtStream and that we are being together in-person again. I want to thank my family for their love and support.”



Joey Kitchelt (John Kelley, the Biologist)

Joey is a 26-year-old who attended Rock Terrace School and lives in Olney, Maryland. He enjoys attending classes at Montgomery college and began his experience with ArtStream in 2020. He enjoys singing and dancing and has been loving musical theater since he was a child. His interests include cartoon drawing, acting (including impressions), and he has a fourth-degree black belt in taekwondo! Joey also plays percussion in a rock band with Upcounty Community Resources called Neurodiversity. He is very excited about his performance with ArtStream!



Terrel Limerick (Zero, the Food Cultivator)

Terrel is an actor from Bethesda, Maryland. He has been acting with ArtStream since the very beginning - this is his sixteenth show! Terrel began acting since he was 15 years old with Imagination Stage (formerly Bethesda Academy of Performing Arts) and believes acting is a great goal to pursue! Terrel has worked at Special Olympics International in Washington DC for 17 years. He is currently a special assistant in the business department. In July 2015, at the Special Olympics World Games in Long Beach, California, Terrel became a "World Champion," winning a bronze medal for being the first sailor from the USA to sail a boat solo at the World Games. He is also on the Special Olympics ski and track and field teams. "Special thanks to my family, friends, counselors, sports coaches, and ArtStream staff for always encouraging me to aim high!"



Shannon Lyons (Lucafia, the Alien Translator)

Shannon is a 42-year-old actor from Rockville, Maryland. She was born in Lexington, Kentucky, and moved with her family to Olney, Maryland, in 1987. She has been an actor with ArtStream for fifteen years. Shannon's love of drama began at Imagination Stage (formerly Bethesda Academy of Performing Arts) where she performed for 10 years. Shannon works as a childcare assistant at The Children in the Shoe Child Care in Bethesda, Maryland. She has been employed there for over 16 years. Some of Shannon's favorite activities include karaoke, dancing, Zumba, going to the movies, and swimming. She also enjoys arts and crafts projects, photography, and scrapbooking. She loves to travel and spend time with her nieces and nephews. "Thanks to my parents for supporting me through the years with my love of acting."



Kathleen Maloney (Luna, the Alien Translator)

Kathleen is an actor from Rockville, Maryland. This is her sixteenth show with ArtStream. Kathleen attended Elizabeth Seton High School, where she performed with the choir. She also attended Richard Montgomery High School and Montgomery College. Kathleen served on the Board of Directors at the Arc Montgomery County for several years and currently serves on their Public Policy Committee. She enjoys playing golf with Special Olympics. Kathleen is the youngest of five children and loves being the center of attention. She aspires to be a professional singer or actor in Hollywood. "Shout out to my mom and dad and my Maloney family, that gave me everything in life!"



Tanya Meyerson (Madam, the Linguistics Expert)

Tanya is an ArtStream veteran, and has returned to the theatre after a brief absence. In her time away, Tanya has found she loves volunteering in retail. She works at two different thrift stores and loves being able to organize the incoming donations and interact with customers. Tanya is also a Special Olympics athlete. She has attended the State Competition for bowling a number of times, most recently earning a Bronze medal for her performance. In her free time, Tanya enjoys working on puzzles, going for walks, and attending activities in the community. Tanya is also a talented chef - she always shares her delicacies with her friends and staff. Additionally, Tanya enjoys creating pottery; her dishes, pots, and plates can be found in her friends' and families' homes. Tanya hopes everyone enjoys the show!



Maria O'Connor (Assistant Director; Kit Otreta, the First Mate)

Maria is so excited to return for her seventh show with ArtStream. Along with acting, she is a director of youth musicals, a teaching artist at Imagination Stage, and a lighting designer at the F. Scott Fitzgerald Theater and Joy of Motion. She grew up in Bethesda and went to Northwestern University to study theatre. "Thanks to my family - Kenny, Fiona, Riley, and Morgan - for sharing me with this amazing group of actors."



Conor O'Shaughnessy (Elmer, the Food Cultivator)

Conor is a 34-year-old actor from Rockville, Maryland. This is his twelfth show with ArtStream! Conor performed in plays while attending the Harbour School in Baltimore. He also performed with Dawn Productions at the Baltimore Museum of Art, the Eubie Blake Center, and Martin's West. Conor works delivering mail at the National Institutes of Health (NIH) in Bethesda, Maryland. His hobbies include ballroom dancing, karaoke, guitar, hiking, fishing, and bowling. "I appreciate my family and friends for their support."



Cecelia Ann Pauley (Jessica, the Planetary Specialist)

Cecelia Ann is a 44-year-old actor. Born in Bangkok, Thailand, Cecelia now lives in Silver Spring, Maryland. She has been an ArtStream actor since the beginning - this is her sixteenth show with the Gaithersburg Theatre Company! Cecelia has been a performer since fourth grade, performing at Cabin John Middle School, Churchill High School, Imagination Stage (formerly Bethesda Academy of Performing Arts), and Potomac Community Theatre. Professionally, Cecelia works with the Arc in vocational services. She enjoys singing, music, dance, theatre, and cooking. "Thanks to my parents and family for all their support."



Madeleine Regina (Director)

Madeleine (She/Her) is a Director, Acting Coach, Movement Artist, and Performer in the DC area. With a focus on accessibility in the arts, much of her creative work centers around theatre as a form of social justice, including devised projects such as *Body.* for the Capital Fringe Festival- which focused on the stories we have been told about our physical selves- and *WISE Up*, a production for the company CASE which brings assistance to adopted children and their families. Madeleine is a co-producer of the podcast “Feminist Fairytales”, an audio drama that reimagines fairytales through an intersectionally feminist lens, which was recently featured on the BBC podcast radio hour. Her upcoming projects include directing *Motherhood and Other Fractured Fairytales* with Theatre Prometheus, and coordinating accessibility for *Monstress* with Flying V. Additionally, she is an Acting Coach in the Meisner technique with the New York based Matthew Corozine Studio, a Life Stories instructor and educator with Theatre Lab, and a director with ArtStream’s Theatre Companies.



Alexander “Al” Richardson (Levi, the Protections Specialist)

Alexander “Al” has performed with ArtStream for sixteen years. Born in Washington, DC, in 1981, Al lived in Switzerland, Zambia, and Australia before eventually moving to Rockville, Maryland, where he now makes his home. Al works with St. Coletta. He maintains an active life away from work that includes music with the InterPlay Orchestra, sports with Special Olympics (Alpine skiing, swimming, golf, and tennis), fitness with Spirit Club, the Montgomery County Road Runners (MCRRC), and social activities with UCR.



Nmandi Thompson (Sky, the Ship Captain)

Nmandi is a 24-year-old actress from Laytonsville, Maryland. She has been involved with Imagination Stage during her high school years. She particularly enjoyed starring in the musical *Wicked*, the Pegasus Ensemble, and Voices Heard with the Sunshine Project. Her passion for acting took her to ArtStream. This is her third year performing with Gaithersburg Company B. Nmandi loves dancing and is active with the Devinio Dance Studios. She has been a cheerleader with Special Olympics. She is currently writing her first book. She hopes to pursue a career in acting as well as writing. Her hobbies include shopping and travelling. She has travelled widely in America, Canada, the Caribbean, Europe, and Africa.



THANK YOU

for coming to see our
Gaithersburg Theatre Companies' performances!



Congratulations to ArtStream for its success and thanks to all the actors, directors, mentors, stage crew, choreographers, costume designers, musicians and everyone who has made this success possible.

ArtStream's success is your success. Matthew has loved every role he has acted over the last 13 years and is excited to see who he will be in 2020!

—The McMeekin Family



Old Green Eyes in "Saving the Starlight", 2007
A Swimming Jock in "Fast Times at Woolsey High", 2008
James Beard-Childs in "It's a Wonderful Pie", 2009
Prince Robin the Brave in "Once Upon a Time – Again", 2010
Albert (a film maker) in "That 60's Play", 2011
Kristoff McLawyer in "Dairy She Wrote", 2012
Dr. McKelvey, DDS in "Goldfall", 2013
Big T in "Great Scott", 2014
Coach Joe, the bobblehead, in "The Lost Toys", 2015
Geoffery, the Jester in "It's About Time", 2016
Thunder Tree in "To Enchantia", 2017
Professor Why in "To-may-to, To-mah-to", 2018
Emcee Dion in "The Magic Within", 2019
Uncle Albert in "Prom's the Word", 2020-2021
McFirefly in "Inclusia", 2022



In Memory of Judith Pauley (pictured above with her husband, Joseph Pauley), mother of actor Cecelia Pauley. We will always remember Judy, a passionate, visionary woman and mother, who made this world a better place, not just for Cecelia, but for us all.



**Thank you to Artstream for
all your hard work. We
love the program and
are so glad Chris can be
a part of it!**

—The Pagonis Family



**Alex is a proud member of
the creative, collaborative
ArtStream community!**

Congratulations!

**Congratulations to the
Gaithersburg Theatre Company actors
for an amazing show!**

**We know your talent and hard work will be rewarded
with great performances.**

GO ARTSTREAMERS!

Megan, Mike, and Ellen Cooper



SAFEWAY®

Alex:

You're not just a great friend



an intrepid explorer.....



a great communicator



..... adorable, and adored

..... you're definitely going places and taking us all along for the ride! Where will you and your Art-Streamers take us all this coming year? Wherever that is, we'll be right behind you. All of you.



THANK Y♡U



Thank you to all of ArtStream's Teaching Artists for their creativity and dedication!
Your hard work helps our ArtStream students find their voices and excel!

—The Bradley Family



**Congratulations
to our favorite
ArtStream actor!**

**With love from
Frank, Molly,
and Jane Myers**



320
PERFORMANCES

since our
first show
in 2007



30

PARTNERS

offer ArtStream
classes to over
550 PEOPLE
WITH IDD's
of all ages



60

**ORIGINAL
MUSICALS**

created by
ArtStreamers
since 2007



850

CLASSES

held annually
in the DMV

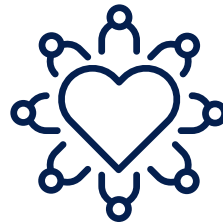


1,600

PEOPLE

WITH IDD's

empowered annually



4,711

VOLUNTEER

HOURS

completed annually

ArtStream Directory

BOARD OF DIRECTORS

Mike Cooper, **Chair**
Lisa Gaffney, **Vice President**
Molly Myers, **Treasurer**
Maggie Haslam, **Secretary**
Eleanor Allen
Pamela Brown
Kim Coates-Schofield
Kristen Chou
Matt DiGilio, **Client Liaison**
Rye Ellis, **Teaching Artist Liaison**
Sari Hornstein
Paul Murray
Darlene Richardson

Irene Stephens
Jonathan Tepper
Sonia Trask

STAFF

Heller An Shapiro, **Executive Director**
Jennifer Dudley, **Database Coordinator**
Mimi Hess, **Director of Development**
Katie Mraz, **Outreach Coordinator**
Catie-Reagan Palmore, **Communications Manager**
Rachael Sutherland, **Program Manager**
Sarah Sandifer, **Theatre and Events Manager**
Lynn Taylor-Moore, **Director of Finance and Administration**

2021-2022 INCLUSIVE THEATRE COMPANY AND CABARET ARTISTS

Sabrini Babu	Caroline Grabow	Michael Lautenberger	Michael Piccone
Suzan Basoglu	Denise Green	Russell LeFurgy	Laurie Pippenger
Shelley Belgard	Melanie Gross	Eli Lewis	Robin Porter
Becky Birch	Jessica Grossman	Alex Lightfoot	Cassie Rennie
Ana Bradley	Peter Han	Terrel Limerick	Javier Requejo
Tyler Brown	Jason Hartt	Shannon Lyons	James Richard
Langston Caldwell	Jennifer Holden	Kathleen Maloney	Alexander Richardson
Merry Casillas	Greg Hoppe	Alexandra Martel	Tory Richeson
Rachel Coates	Lindsay Howard	Lukas McCormick	Cynthia Ring
Ben Collins	Sean Hume	Adam McCrensky	Steve Sabia
Megan Cooper	JP Illarramendi	Faith McLuckie	Pete Scampavia
Kirsten Davidson	Ravi Jesrani	Matthew McMeekin	Andrea Soltesz
Kelly DeRoy	Mark Jones	Amy Merrell	Frank Stephens
Matt DiGilio	Patrick Jones	Tanya Meyerson	Christopher Sudbrink
Christie DiPlacido	Stella Rose Kalb	Leslie Moore	Laura Sullivan
Katy Donahue	Laurie Ann Kehoe	Siobhan Murphy	Adam Tepper
Eric Edwards	Jeffrey Keyser	Chelsea Murray	Nmandi Thompson
Jonathan Feifer	Nader Khalaf	Joe Myers	Anna Tiernan
Adrian Forsythe y Korzeniewicz	Alexx Kipp	Josef Newton	Elias Tsakiris
Andrea Geller	Tammy Kiser	Kerry O'Brien	Amelia Turkewitz
Ivy Gilat	Joey Kitchelt	Conor O'Shaughnessy	Steven Wabik
Zeev Gilat	Nicholas Kramp	Chris Pagonis	William Ward
Benjamin Glantz	Mike Krempasky	Cecelia Pauley	Allie Welch
	Ricky Kuron		

TEACHING ARTISTS

Mark Andrist
Pamela Bilik
Pooja Chawla
Elizabeth Cronin
Annetta Dexter Sawyer
Liv Dinter
Ricky Drummond
Rye Ellis
Shelley Fisher
Pam Freedy
Kathryn Hamilton-Lodge

Haley Hubbard
Lizzie Hughes
Patricia Krauss
Enemy Jones
Norah Juzenas
Simon Kaplan
McKenna Kelly
Mary Beth Levrio
Wendy Lanxner
Andre Leonard
Ariel Medley
Diana Metzger
Michael Morton
Janeni Nathan

Heather Newhouse
Emilia O'Connor
Maria O'Connor
Kristen Pilgrim
Madeleine Regina
Sandy Roachford
Penny Russell
Luke Scaros
Barbara Schelstrate
Andrew Stainer
Becky Webb
Natalie Zabin
Melanie Zehner
Delia Zielinski

VOLUNTEERS

Ian Bannon
Allison Bozniak
Peter Kehoe
Eleanor Neal
Charles Nearman
Audrey O'Donnell
McKenna O'Donnell
Andy Penn
Joe Rogers
Shaun Stronach
Siena Stronach
Ally Thornton
Grace Vickery

THANK YOU TO THE GALA AND DANCE PARTY SPONSORS

PRODUCER

The Brown Family
Ellen & Mike Cooper
Sari Hornstein
The McHaskin Family

DIRECTOR

The Myers Family
Amy Weinberg & Norbert Hornstein

DESIGNER

The Pagonis Family
The Washington Group Special Care Planning Team

CHOREOGRAPHER

Eleanor Allen
Ginny & Michael Bradley
Lerch, Early & Brewer
David Lightfoot & Betty Tufner
Joseph & Cecelia Pauley in memory of Judith Pauley
The Veenhoff Family, in honor of ArtStream founders,
performers, and volunteers

ACTOR

Bev & Umur Basoglu
John & Shelly Bogasky
Capital Bank
Jillian & Scott Copeland
Lisa Gaffney
Garfine Schiller Gardyn, P.A.
Maggie & Andrew Haslam
Jeanne & Bob Holden
Andrea & Jeremiah Massas-Cassidy
Vu & Thanh
Van Tran

SAVE THE DATE



ArtStream's Gala and Dance Party
October 16, 2022

ARTSTREAM'S GAITHERSBURG THEATER COMPANIES PRESENT:

MUNCH ADO and GAME OVERBOARD

FEATURING SILVER SPRING THEATER COMPANIES A AND B

JUNE 10-12 & 17-19, 2022

FRIDAYS AT 7:30 PM, SATURDAYS & SUNDAYS AT 2:30 PM

SILVER SPRING BLACK BOX

8641 COLESVILLE RD, SILVER SPRING, MD 20910

THURSDAY, JUNE 30, 2022, AT 7:30 PM

FILMED PREMIERE | ONLINE VIA ZOOM



SAFEWAY
Foundation



PAUL M. ANGELL
FAMILY FOUNDATION



arts & humanities
COUNCIL OF MONTGOMERY COUNTY

MSAC

Jack B. Anderson



ArtStream, Inc. is a 501 (c)(3) nonprofit arts organization, supported by individual donors and by funding from the Montgomery County Government and the Arts and Humanities Council of Montgomery County, and by the Maryland State Arts Council, on the web at msac.org/recognizing-our-grants. Additional funding comes from The Morris and Gwendolyn Cafritz Foundation.

Additional funding for the Cabaret Companies comes from Kristen N. Chou, ArtStream Board of Directors, Ning Solutions Inc.

ArtStream
ARTS AND HUMANITIES COUNCIL OF MONTGOMERY COUNTY



Thanks for a great season!