



NORTH SMITHFIELD HERITAGE ASSOCIATION MONTHLY NEWSLETTER

Volume IV Issue IV~ April 2023

IN THIS ISSUE:

- ~Annual Appeal
- ~Thank you
- ~From the Archives
- ~Fifty Years Ago
- ~NS Historic Cemeteries
- ~Historic Cemetery of the Month
- ~April Spotlight
- ~Maintenance
- ~Indigenous Ceremonial Stone Features
- ~Conservation
- ~NSHA Activities
- ~Mystery Photo
- ~NSHA Merchandise
- ~Membership
- ~Outreach



Volunteer for NS Clean and Green Day!!



North Smithfield's 21st Clean & Green Day

The committee encourages the community to support the clean-up of local roads and parks from 8:00 am to 12:00 pm on Saturday, April 22. Volunteers can preregister at <https://www.signupgenius.com/go/60b0845aaae23aaf85-nsclean?useFullSite=true#/>. Simply choose the location you want to clean, indicate the number in your group and their t-shirt sizes.

In person registration starts at 8:00 am at the town hall at 83 Green Street. Registration ends at 10:00 am but the cleaning continues until noon. Volunteers need to hand in waivers to participate.

Volunteers will receive gloves, trash bags, T-shirts, stickers and water bottles. They can also borrow trash grabbers and/or signs to alert motorists about the clean-up event.

The committee thanks Anchor Subaru and Waterson Terminal Services for their amazing donations and continued support on NS Clean and Green events.

For more information go to <https://www.nsmithfieldri.org/> under the trash and recycling link or at the NS Clean and Green Facebook group page.



NSHA Clean and Green event



In support on the NS Clean and Green Day event, volunteers will meet at 9:00 am on Saturday, April 22 to clear and clean along the Blackstone Canal along Canal Street. Please register online or in-person at the NS Town Hall prior to coming to the site. For more information please contact Keith Hainley at dkhainley@gmail.com or 401-996-1542.

Mammoth Mill Park

Volunteers continue to partner with the Blackstone River Valley Heritage Corridor and the NS DPW to clear trash, trees and brush from Mammoth Mill Park on Mill Street.





NEW!! Veterans Memorial Program

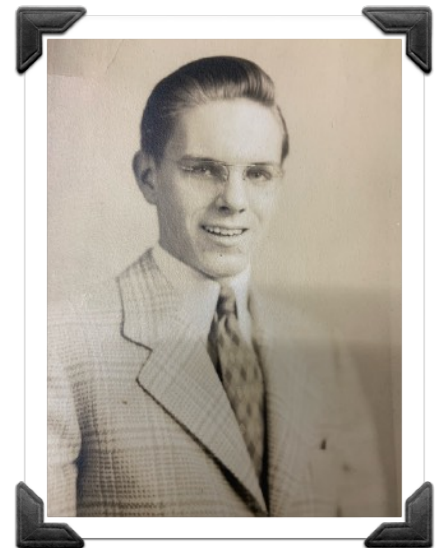


The NSHA offers to fly memorial flags of deceased veterans for a period of thirty days at the Memorial Building. We will also publish a brief biography of the honoree's military service in the NSHA newsletter. We will return the flag to the family at the end of the thirty day period or continue to fly the flag until replaced by another depending upon the family's wishes.

To participate please contact us at
nsha@nsheritageassn.com or call [401-651-6316](tel:401-651-6316)

The first flag of this program will be raised at the beginning of May. It is in honor of Frederick O. Klockars. You may know Keith Klockars as a NSHA member and also as the owner of Village Paint along with his son, Kyle. This short description of his service written by his son, Keith:

Frederick O. Klockars answered the call of his country during WWII, and served slightly over 3 years in the US Army Signal Corps. After registering for the draft, he was inducted on 11 March 1943 and began active service on 18 March 1943. He attended Infantry Basic Training and next Radio Repairman School in Baltimore, Maryland. He remained stateside supporting the war effort by analyzing, maintaining and preparing radio equipment for use worldwide. In late March 1945, he deployed to the European Theatre of Operations arriving on 3 Apr 1945, where he was assigned to the 553rd Field Artillery Battalion. He participated in the final assaults on the German Heartland and after hostilities ceased, he was a member of the Army of Occupation. He returned to the US in April 1946 and was mustered out as a Technician Fourth Class, at Ft Devens, MA, on 30 April 1946, having completed 1 year of overseas service. He earned both Sharpshooter and Expert Marksmanship Badges and was awarded the Good Conduct Medal, American Theatre Campaign Ribbon, European African Middle Eastern Campaign Ribbon, and WWII Victory Medal. Upon return to civilian life he married Inez Newsome Klockars on 9 Aug 1947. He worked in the hardware industry and passed on 12 Sep 2013.



Frederick O. Klockars



COMMUNITY ANNUAL APPEAL

We rely on you to help preserve
North Smithfield's amazing heritage!

2023 INITIATIVES

- ✓ Complete restoration of Forestdale School interior
- ✓ Cemetery restoration
- ✓ Historical artifact acquisition & preservation

WAYS TO DONATE

- Scan QR codes for PayPal or Venmo
- Mail check payable to NSHA to P.O. Box 413, Slatersville, RI, 02876
- Drop off at the Memorial Town Building
- Call 401-447-6394 to arrange doorstep pickup

For any questions or inquiries please email:
nsha@nsheritageassn.com
or visit:
<https://www.nsheritageassn.org/>



NSHA Board Members started the 2023 Appeal by donating \$4,400 thus far. We thank them for their leadership and generosity!

We appeal to the community to help fund our preservation efforts. We hope to complete the restoration of the historic Forestdale School this year. We have enough funds to complete the exterior restoration and 40% of the interior. Please donate today to help us finish this project.

Send donations via mail, PayPal Giving Fund, or Venmo. Or you can simply drop off your donation or pay with a credit card at our headquarters at 1 Main St. during our weekday morning business hours. We will also pick up donations at your door! **Any amount helps enormously!**



Thank You



Al Menard with Scott Reichenberg



Ava Tessitore, Hannah Hazelton, and Sam Turco

We thank Scott Reichenberg and Bob Aldrich for loaning old family photos and documents for us to scan for our archive collection. We also thank Hannah Hazelton for donating old documents that pertain to Union Village.

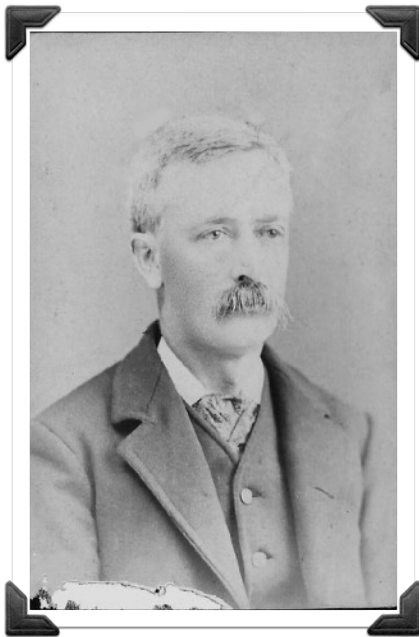
The archives and the research center are open every Tuesday from 9:00 am until 12:00 pm and every Wednesday from 10:00 am until 12:00 pm. Stop by and visit or contact us to make an appointment to visit on another day.

Your family photos contain our local heritage! Please loan your old family photos and/or letters to us to scan. We'll return them promptly or even scan them while you wait! We'll also store old photos for you if you'd like.

Please contact us at nsha@nsheritageassn.com or call [401-651-6316](tel:401-651-6316)



From the Archives



Henry Wardle. This photo shows Henry with his fashionable “walrus-style” mustache. According to historical records, the ‘shaggy Walrus style’ was a favorite of fashionable men and grooming required specific attention to detail, so hair drooped dramatically over the lip and just slightly down the side of the mouth

Henry was very civic-minded. He served as North Smithfield Tax Assessor for two years and Town Councilor for one. Also, he was Overseer of weaving in what was called “Number 3 Mill”. For more than 35 years he worked at the mill. There he was admired and respected by all who knew him. Upon his retirement they presented him with an elegant carved oak sideboard.

Henry died of a stroke at his home in Forestdale on June 10, 1901, and is buried in the family plot in Slatersville Cemetery.

The Wardle Brothers – Soldier-Hero and Trailblazer

By Al Menard

The Wardle family emigrated to the US from Lancashire in Victorian England during the winter of 1848. John and his wife, Olive, brought their three sons and two daughters to Smithfield, RI. There he worked as a spinner in the local mill and studied to become a citizen. After losing a son to scarlet fever, the family moved to neighboring Burrillville, where they bought a small farm. The boys worked in the mills as well as on the farm as soon as they were able. John and Olive would continue to live in Burrillville until their deaths, hers in 1883 and his in 1891. Both are buried in the Slatersville Cemetery.

The Wardle boys flourished on the farm and soon went out on their own. The oldest son, Henry, born in 1839, enlisted into the R.I. Infantry in 1861. He was a Corporal of Company E, 4th regiment. Henry was wounded at the Battle of New Berne in North Carolina where the Union Army defeated the Confederates and took possession of Fort Thompson. Upon his return from the war, he married Sarah Bottomley and moved back to Slatersville to live with her family. They had a son, Harry Hazelwood.

Henry was very civic-minded. He served as North Smithfield Tax Assessor for two years and Town



Home of Henry Wardle. This house was situated “at the junction of the highway between Union Village and Uxbridge and the road leading to the company store in Forestdale.”



From the Archives

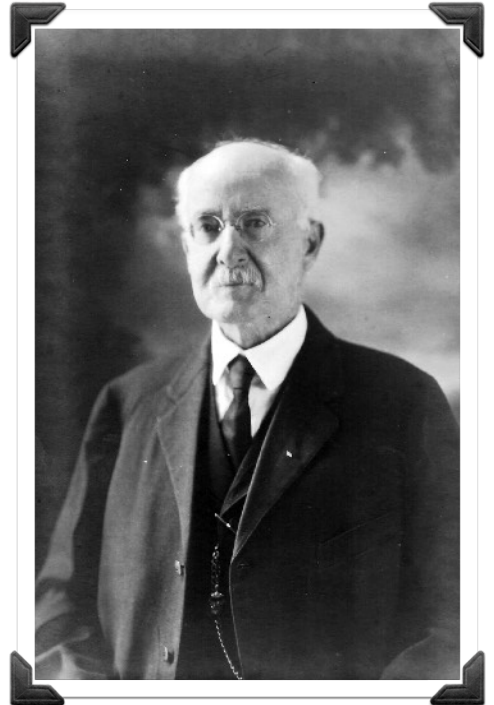
Joshua, the younger brother, was born in 1844. He moved from Burrillville to Slatersville to work as a machinist in the mill there. He married Ann Waterhouse, and they had two sons, Edward Beaumont, and William Marsden. Like his brother, Joshua enjoyed politics and believed in getting involved in the community. He was chosen Overseer of the Poor when he was thirty. In this difficult position he had four main duties: Estimate the poor relief money needed and set a poor rate, collect the rate, distribute the poor relief, and supervise the poorhouse. Though a very demanding job, this position was an excellent steppingstone to higher governmental offices. Joshua's life would continue to revolve around politics as he went from Town Councilor to president of the Town Council to Town Assessor and Health Officer and finally to State Senator from North Smithfield!

A man of principle, Joshua had developed a reputation for being "one of the cleanest men in the town and (one) who stands high in Slatersville, where he resides." He worked in the cotton mill and had a small farm on Buxton Street. After his wife died in 1912, he

moved to a smaller place on North Main in Slaterville. At the age of 78 he chaired the committee to build the Memorial Town Building. A building that now houses some of his memorabilia.

Joshua died at 82 on July 25, 1926. He is buried in Slatersville Cemetery and is noted for being the first person from North Smithfield to become a state senator.

Father John Wardle, who had earned his citizenship so many years before would share our admiration, pride and respect for these civic-minded brothers and thank them for their service.



Joshua Wardle. This was taken toward the end of Joshua's lengthy career. His career lasted 20 years longer than his brother's.



Home of Joshua Wardle. Still standing today on Buxton St. For unknown reasons, this home was also called "Bleak House." The people on the doorway are unidentified.



Fifty Years Ago

This month's Fifty Years Ago article comes from page 3 the April 1973 edition of the NSHA newsletter.

New Logo Adopted

The Board of Governors recently commissioned a logo which will serve as an emblem for the NSHA. It appears for the first time in the heading of this issue of the newsletter. The logo was designed by Mr. Harris Hean, a commercial artist formerly of this town now living in Woonsocket.

The design consists of two parts, first is the name of the organization and the year of its foundation. The central motif symbolizes the two most important aspects of North Smithfield's heritage. The plow indicated our agricultural past. The early 19th century cotton loom refers to our industrial history.

According to Mr. Hean, the emblem is so designed that it is suitable for reproduction in all sizes, from as small as a quarter for medals to as large as a tile trivet.



In relation to the above story...

We've recently had two table covers made with the NSHA logo emblazoned on the front to be used at events such as Pumpkin Fest, Heritage Day or anywhere we would like publicity.

We thank Christine Dubois for having them made for us!





NS Historic Cemeteries



Rhode Island Historical Cemeteries Awareness and Appreciation Weeks

APRIL - MAY 2023

www.preservation.ri.gov/ricw

Why cemeteries?

Cemeteries are among Rhode Island's most unique and often overlooked cultural resources. Nearly 3000 sites have been identified in our small state, including Indigenous Peoples' burial places, family plots on rural farmsteads, church graveyards, picturesque garden cemeteries, cemeteries established by religious communities, veterans' resting places and more. Historic cemeteries tell the stories of individuals and families, landscape design, grave marker artistry and technology, religious beliefs, traditional cultural practices and community development. ~***From the Rhode Island Historical Cemetery Commission***

The Rhode Island Historic Cemetery Awareness months are April and May each year.

NSHA cemetery teams will conduct a cemetery tour at Union Cemetery followed by a gravestone restoration workshop at 9:30 am on April 29th.

They will also partner with the Woonsocket Historical Society to conduct a tour of the Smithfield Friends Meeting House and Cemetery at 108 Smithfield Road followed by another gravestone restoration workshop at 1:00 pm on May 7th.

Check out all of the cemetery restoration work on our NS Heritage Assn. Cemetery Group Facebook page.



NS Historic Cemeteries



With the warmer weather finally here, the cemetery teams will begin work in the cemeteries again.



We thank Steve Biron for using his backhoe to dig out many tree stumps at Hotchkiss Cemetery.



Recently, Rachel Naylor contacted NSHA about a gravestone she uncovered while walking in the Friends' Cemetery (actually located in Woonsocket) on Smithfield Road. The stone belonged to Mr Jacob Wilkinson (1769-1842). Jacob was the son of Robert Wilkinson and Mary Lapham. He was also the husband of Amey Streeter.



Historic Cemetery of the Month

The Ananias Mowry Lot by Lynne Pelletier



Also known as North Smithfield Historic Cemetery #11, the Ananias Mowry lot is located at pole #79 on Greenville Road. It is a medium-sized cemetery, enclosed on 3 sides with granite posts and iron chains while the back of the cemetery remains open. When I recently visited, I was impressed at how well the cemetery has been cared for. Nearby neighbors do an excellent job caring for it. There are approximately 42 burials here and most of the gravestones have inscriptions, but there are also 5 fieldstone markers which may indicate the earliest graves. The oldest burial here dates to 1789 while the newest dates to as recently as 2005. It's incredible to think that this cemetery is the final resting place of over 200 years of descendants of the Mowry family! These descendants include wives and children, farmers, businessmen, and veterans of the Civil War, World War I and World War II.

The cemetery is named for Ananias Mowry, born February 21, 1740 to parents Ananias Mowry and Zerviah (or Zeruiah) Angell. We will call him Ananias II due to the fact that there are 3 men buried here with the same name! Ananias II married Abigail Paine on September, 20, 1764 and they had at least 4 children. Ananias II had a good farm on Iron Mine Hill that he inherited from his father.

"*The Descendants Of John Mowry*" book refers to this area as the "Mowry Neighborhood." Ananias II was said to be "an honest and upright citizen." He served the town as a Justice of The Peace and he died at age 78 on March 5, 1818.

Family lore says that Ananias Mowry I may also be buried here although his grave is marked with only a field stone. Ananias I was the son of John Mowry and Marjorie Whipple and he was born on May 2, 1702. He married Zerviah Angell on March 2, 1737. It's interesting to note that according to an article written by descendant Rebecca Smith that was published in the Fall 2020 edition of "Rhode Island Roots", the marriage date was incorrectly recorded as March 2, 1745, which would have actually been after the births of four of their children! She determined the scribe must have made an error and wrote the year the marriage was recorded and not the year it actually took place. She was able to determine the actual marriage date by locating the original marriage record at the Rhode Island Historical Library.

Rebecca Smith also explained that "Ananias was a member of the Friends Meeting and had some livestock confiscated during the Revolution for declining to take up arms. This could also explain the lack of inscribed gravestones for him and Zerviah; that generation of Friends regarded gravestones as a worldly vanity." Thank you, Rebecca for this interesting information!

Ananias III, was born on March 2, 1771. He married Nancy Barnes on May 10, 1798 and they had 7 children including Ananias IV who is not buried here. Ananias IV did not marry or have children so the naming tradition may have ended with him! Ananias III died on April 12, 1842 at age 71.





April Spotlight

How Does Your Garden Grow??

The warm weather has made me want to get outside and start my garden. I found this great article in The 2023 Old Farmer's Almanac and thought others might enjoy it too!

Phenology: Nature's Calendar

For centuries, farmers and gardeners have looked to events in nature to tell them when to plant vegetables, flowers and when to expect insects. Making such observations is called “phenology,” the study of phenomena. Specifically, this refers to the lifecycles of plants and animals as they correlate to weather and temperature, or nature’s calendar. If the signal plants are not growing in your area, notice other coincident events; record them and watch for them in ensuing seasons.

Vegetables:

- Plant peas when Forsythias bloom.
- Plant potatoes when the first dandelion blooms.
- Plant beets, carrots, cold crops (broccoli, brussels sprouts, collards) lettuce and spinach when the lilacs are in first leaf or when the dandelions are in full bloom.
- Plant corn when oak leaves are about the size of a squirrel’s ear (1/2 inch). Or plant corn when apple blossoms fade and fall.
- Plant bean, cucumber and squash seeds when the lilacs are in full bloom.
- Plant tomatoes when the lilies-of-the-valley are in full bloom.
- Transplant eggplants and peppers when bearded irises bloom.
- Plant onions when red maples bloom.

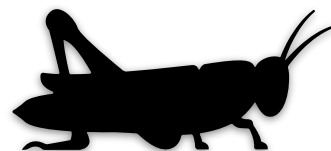


Flowers:

- Plant morning glories when the maple trees have full-size leaves.
- Plant zinnias and marigolds when black locusts are in bloom.
- Plant pansies, snapdragons, and other hardy annuals when aspens and chokecherries have leafed out.

Insects:

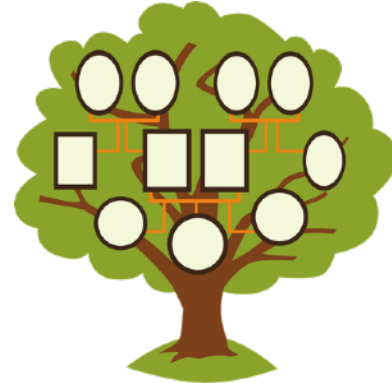
- When purple lilacs bloom, grasshopper eggs hatch.
- When chicory blooms, beware of squash vine borers.
- When Canada thistles bloom, protect fruit: apple maggot flies are at peak.
- When foxglove flowers open, expect Mexican beetle larvae.
- When crabapple trees are in bud, eastern tent caterpillars are hatching.
- When morning glory vines begin to climb, Japanese beetles appear.
- When wild rocket blooms, cabbage root maggots appear.





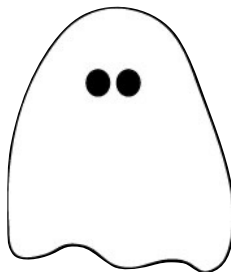
Genealogy

Would you like help to conduct research on your family tree? Lynne Pelletier has extensive experience and access to several databases. Please contact nsha@nsheritageassn.com to coordinate an appointment.



Ghosts and Paranormal Activity

The team conducted a ghost investigation recently at a home near Union Square. We have scheduled an investigation in May for a home on Great Road and we're also trying to confirm a date to conduct another investigation of a house on Green Street.



Have you heard about or seen a ghost in North Smithfield? We would like to document it! Anyone interested in joining the Paranormal Research Team please contact us at nsha@nsheritageassn.com.

Memorial Town Building (1 Main Street)

The RI Inter-Local Trust, the town's insurer, will fund the replacement of the two windows at the Memorial Town Building that were damaged by a car fire last fall. It will take 4 months to manufacture, ship and install the new windows. The new composite windows will replicate the original colonial style windows. It's been a complex process but one that will be worth the wait.





HERITAGE HALL

*perfect for
your small
Shower*

101 GREEN ST
NORTH SMITHFIELD, RI
NSHA@NSHERITAGEASSN.COM



Heritage Hall Rentals (101) Green Street

Rent the newly renovated upper and lower halls!

Visit the NSHA website for an application and rules: <https://www.nsheritageassn.org/general-3>

Call Jeanne at (401) 447-1801 to make a reservation or send an email to nsha@nsheritageassn.com



Maintenance



Forestdale School (190 School Street)



Volunteers continue to paint the ceilings and walls in the halls, bathrooms, library and kitchenette. A new attic ladder was added and the building was also connected to the town sewer system. It's an amazing transformation!!

Also, design drawings are complete for the new emergency exit stairs and cupola base. We hope to meet with the Martone Construction project manager soon.

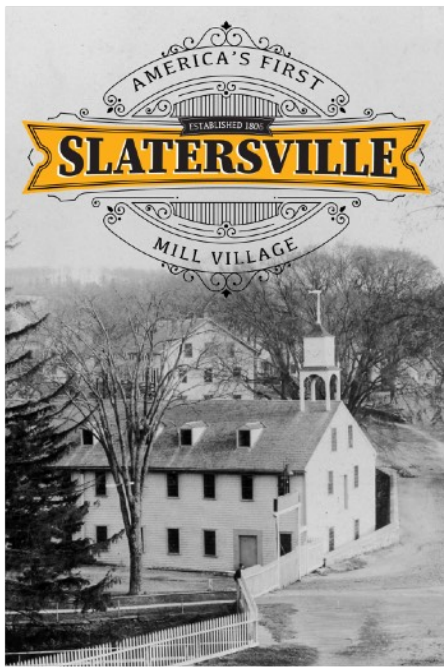




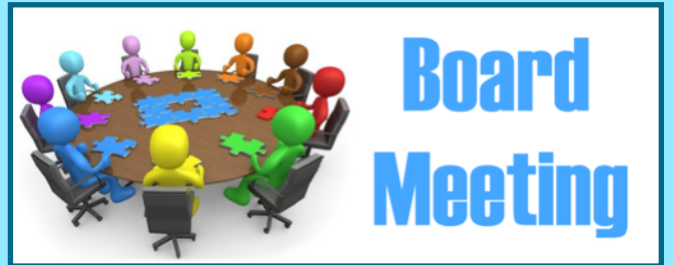
Indigenous Ceremonial Stone Features



The Research Team continues to locate and document local colonial and indigenous stone features. The team meets at 7 pm every other Friday night at the Memorial Town Building.



In case you missed any of season one's episodes they can be streamed at RIPBS.org!



The Board of Directors will meet at 6:30 pm on Tuesday, May 9th at Heritage Hall, 101 Green Street. Members are welcome to attend in person or via Zoom. See the agenda for instructions.

We recently purchased a QuickBooks Account. This will greatly enhance our accounting and audit processes as well as facilitate more detailed reports.



Conservation

2023 North Smithfield Heritage Walks

Heritage walks are held on the 2nd Saturday of each month. The locations are in the descriptions below. All walks meet at 9:30 am.

Heritage Walks 2023 Schedule:

May 13: Crookfall Brook: Woonsocket Reservoir #1 & Pump House, Woonsocket Reservoir #2 and Mill Site, Spring Brook. Meet at Aldi's parking lot at Dowling Village.

June 10: Waterford: Coblin Rock, Mammoth Mills Ruins, Blackstone Canal, Waterford School, St. Paul's Church Waterford RR Station, RR Fountain, Covered Bridge Site. Meet at Fire House Pizza parking lot, Great Road.

July 8: Slatersville: Main St. Green Street, Slatersville Mills, Centennial Park. Meet at the Memorial Town Building. 1 Main Street.

August 12: Nipsachuck Legacy: The Blunders, Nipsachuck National Battlefield & Black Plain Hill Stone Landscape, Three Dog Site, NS57. Meet at the NS Middle School Parking lot, Providence Pike.

September 9: Wunnashowatuckqut: Old Harkness Rd, High Rocks Gorge, Colony Rd, and Stone Features. Meet at the Forestdale School, 190 School Street.

October 14: Wesquidomsett: West Farm, NS 60, NS24, Tyler Mowry House, NS 32, Old Sayles Hill Rd, Rustic Drive-In, Milk Can; Paine Mill. Meet at Aldi's parking lot at Dowling Village.

November 18: Woonsocket Hill: Mowry Fire Tower, Philip Mowry House and NS47, National Grid stone features. Meet at the NS Middle School parking lot.

December 9: Cedar Brook Legacy: Todd's Farm and Cedar Brook Cart Path, Meet at NS High School Tennis Courts on Grange Road.





Conservation



Family Nature Walks



Each week the NSHA and NS Parks and Recreation Department sponsor a family hike. The tour visits one of three local conservation areas to follow well-marked woodland trails. The group follows a leisurely pace with plenty of stops for sightseeing and photos at some of the most beautiful scenic landscapes in town. Walks usually last about two hours.

At 9:30 on Saturday, April 29th, the group will walk in the Fort Wildlife Refuge at 1445 Providence Pike. Meet at the trailhead.

At 9:30 am on Saturday, May 6, the group will hike in the Wunnashowatuckqut Conservation area. Park at the intersection of Martha Rd and Harkness Rd.

Woonasquatucket River Greenway and Bike Path

The NSHA continues to work with the Woonasquatucket River Watershed Council to plan an extension of the greenway and bike path into North Smithfield along the abandoned Providence and Springfield railbed. One of the major property owners, AT&T recently agreed to support the project.





NSHA Activities

Annual Meeting and Potluck Dinner

Members met at 6 pm on Friday, April 14 for a potluck dinner and annual meeting. A wide variety of delicious food was served and a good time was had by all.



After dinner, the members voted on changes to the By-laws and elected the following officers:

President	Rich Keene
Vice President	Peter Hainley
Treasurer	Doug Osier
Assistant Treasurer	Deb Keene
Recording Secretary	Rachel Pecoraro
Corresponding Secretary	Jody Lamoureux
Assistant Corresponding Secretary	[vacant]
At Large Director	Ruth Pacheco
At Large Director	Bob Mowry
At Large Director	Sam Turco

There was an important by-law changed regarding membership dues. Dues will now be due on January 1st to reflect the calendar year. 2024 dues will be due on January 1, 2024 but members can still pay now and get credit for all of 2024 or they can wait until December to pay for 2024. Also, Seniors 75 and older are now free



NSHA Activities

A smaller-than-usual group participated in the new Pound Hill Road Heritage Tour. See our Facebook page for more photos. Nevertheless, the group enjoyed stops at most of the significant historic buildings along one of the town's oldest roads. We thank the many property owners who welcomed the group.



Members of NSHA were treated to a tour of the 1851 Jacob Morse house. It is known as one of the last architecturally significant dwellings built in Union Village. It is an Italianate with 2 1/2 stories. It has a Flank-gable roof with wide eaves and bracketed raking, eaves and cornices.

We thank, Hannah Hazelton, current homeowner for sharing her love of her home and history with us.



NSHA Activities

NSHA Field Trip!

Come join us for a guided tour of the Paine House Museum and grounds.

Paine House Museum, 7 Station St, Coventry, RI, 02816

Circa 1691

Saturday, May 6th at 10:00am

Those interested could meet at the NSHS parking lot at 9:00 am to carpool.

The Paine House Museum which is owned and operated by the Western RI Civic Historical Society has had multiple owners throughout its history and was donated mid-1950s by the last owner, Zilpha Foster. In addition to a residential home, it has been used as a tavern as far back as 1785. In addition to the historical architecture, there are lots of artifacts housed within the museum. Some notable artifacts are a working 1900s Edison windup cylinder phonograph, a restored 1890s wood lathe, Victorian era clothes, shoes, and accessories, and a barn loom.





NSHA Activities

History Night

On Friday, April 21, at 7:00 pm in Heritage Hall at 101 Green Street, our monthly history night will feature a presentation about the history of Hospice Saint Antoine by Beverly St. Onge.



Save The Date!!

Once again, **North Smithfield Heritage Day** will take place on July 8, 2023. Heritage Day remains a popular event that takes place during the town's celebration of NS days. The event will again feature vendor booths, organizational displays and exhibits, historical artifacts, food and a vintage car cruise. Look for more information to come!





The mystery has been solved!



Almost all of the individuals in this photo have been identified thanks to our eagle-eyed readers. We thank Dan Andrews, Paul Baillargeon, Beth Faricy, Alice Homer, Rich Keene, Debbie Lightowler, Jeanne Marion, Ruth Pacheco, Richard Potenza, Dave Richards, Scott Riechenberg, Joe Tenori, Louise Van Howe, Claudette Zinzer, for their help! *If I forgot anyone, I apologize!*

The consensus is that this is the 1971 NS Centennial Committee.

Back row L to R- Warren Bolduc, Howie Holt, Rev. George Harvey, Doris Holt, Fred West, Lois North, Becky Morrison, and Frank Pacheco.

Front row L to R- unidentified, Phyllis Bolduc, Marie Robertshaw West, Dave Naradowy, Germaine Pacheco, Melita Fisher and Virginia Bryden.

If you recognize the unidentified lady in the front row, please let us know!



Mystery Photo



April's Mystery Photo

This month's photo appears to be a party of some sort that took place at the Slatersville Mill. Does anyone recognize the occasion or individuals?
Please contact NSHA if you do!

Please contact us at nsha@nsheritageassn.com or call [401-651-6316](tel:401-651-6316)



NSHA Merchandise

We maintain a wide range of merchandise that includes books, maps, puzzles, and so much more! View our entire inventory at the **NSHA On-line shop** at www.nsheritageassn.org. We will deliver free locally.



Slatersville Congregational Church Ornament!

Cost is \$15.



The new Wright's Farm 252-piece puzzle. Cost is \$20. Puzzles are available for purchase at the Forestdale School, The Memorial Town Building and Wright's Dairy Farm.



*Scenic 2023 Heritage Association Calendars now available
\$10 each at the following locations:
Li'l General, Leeway Hardware and Village Paint*



**Our 2023 calendars are now 50% off!
Get this beautiful calendar for just \$5!**





Membership

We welcome new members Tim Cox and Charles Gardner.

~Your \$20 annual dues allow us to conduct vital preservation activities. Seniors over 75 and full-time students are still free. If you are not sure of your status, please contact us.

~2023 Annual Dues are due on **May 1** each year. We thank the **173 current members** who have renewed. Members in arrears or with expired memberships can still renew by mail, via PayPal Giving Fund, Venmo or Tuesday mornings at the Memorial Town Building.

~You can become a member by filling out an application found on our website:

<https://www.nsheritageassn.org/membership>

You Can Help

Join: It costs just \$20 each year!

Volunteer: Help with any of our ongoing activities and events. No need to make a commitment. We appreciate whatever you can do!

Donate: Our Annual Appeal runs all year long. We like local artifacts. We appreciate whatever you can give!

Share: Share this free newsletter with friends and family. Encourage them to subscribe. Only shared knowledge can preserve our heritage!

NSHA Payment Options

1. **PayPal Giving Fund:** search for nsha@nsheritageassn.com, select “**Donation**” and type the purpose for the payment on the memo line.
2. **Venmo:** Open the Venmo app and search for North Smithfield Heritage Assn@NorthSmithfieldHeritageAssn. Tap on Pay, enter the dollar amount to be paid, and fill in the field what’s it for (ie., dues, merchandise, donation etc). Tap on Pay and select your payment method you have established in the Venmo app.
3. Give **cash or check**. Make checks payable to “NSHA”. Note “**Dues, Annual Appeal or Merchandise**” on the memo line.
4. **Mail Checks** to NS Heritage Assn, P.O. Box 413, Slatersville, RI 02876.
5. We will also pick up payments and deliver purchases at your door if you live locally. Contact nsha@nsheritageassn.com or call [401-651-6316](tel:401-651-6316).



Development

The North Smithfield Heritage Association Fund

Background

The NSHA created this RI Foundation endowment fund in 2021 with personal donations made by its Board of Directors and a corporate grant from Amica Mutual Insurance Company.

Purpose

The Fund establishes a perpetual investment that grows every year to help fund NSHA preservation projects and activities.

Tax Benefits

Your donation is tax-deductible.

In addition to cash, the Foundation accepts gifts of securities, real estate, and other personal property, which may help you avoid capital gains taxes on appreciated assets.

Free legal assistance

Receive legal assistance with trust or bequest language; charitable annuities; charitable remainder trusts;

Contact

Kelly Riley

Donor Services Administrator

401) 427-4028

kriley@rifoundation.org

Make a tax-deductible donation to this RI Foundation managed fund that will grow perpetually.

The NSHA can use a portion of the fund each year for preservation activities.

Gifts can be made to the Heritage Association Fund in two primary ways:

1. A check made out to the Rhode Island Foundation (with a reference on the memo line to the NS Heritage Association Fund) can be mailed to the Rhode Island Foundation, One Union Station, Providence, RI 02903.
2. A credit card gift can be made at this link: <https://rifoundation.org/funds/north-smithfield-heritage-association-fund>



Outreach

Members who would like to create a post or event on the NSHA Facebook Page, should send a photo and text to the NSHA email account.

Facebook Page Followers: 1,174

Website: 273 interactions in last 30 days

NSHA Newsletter Subscribers: 1,235

Instagram Followers: 143

nsha@nsheritageassn.com



We now have a Venmo account that you can use to make dues payments, donations or to purchase merchandise.

Instagram (nsha1970) Please follow us!



Visit our **Facebook Page** to learn about our events and activities. Get acquainted with some of our members and supporters. Like and share with friends and family!

www.facebook.com/northsmithfieldheritage



Visit our website! Read past newsletters, learn about our organization as well as our many ongoing historic preservation activities. <https://www.nsheritageassn.org/>

Most importantly, share this newsletter with family and friends! To join our mailing list, simply contact us at nsha@nsheritageassn.com or [401-651-6316](tel:401-651-6316)

