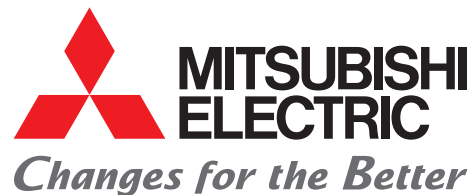




for a greener tomorrow



FACTORY AUTOMATION

MELSEC iQ-F Series
iQ Platform-compatible PLC

FX5UJ-24M□/□, FX5UJ-40M□/□,
FX5UJ-60M□/□

MELSEC iQ-F
series



New **FX5UJ**

Start any control from here

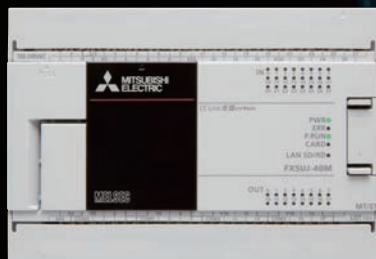
FX5UJ

Enhanced performance and ease of use for any machine

FX5UJ, which excels in cost performance, is equipped with various built-in functions which earned popularity in FX5U(C), and promotes increased ease of use.



FX5UJ-24MR/ES AC D2 R
FX5UJ-24MT/ES AC D2 T1
FX5UJ-24MT/ESS AC D2 T2

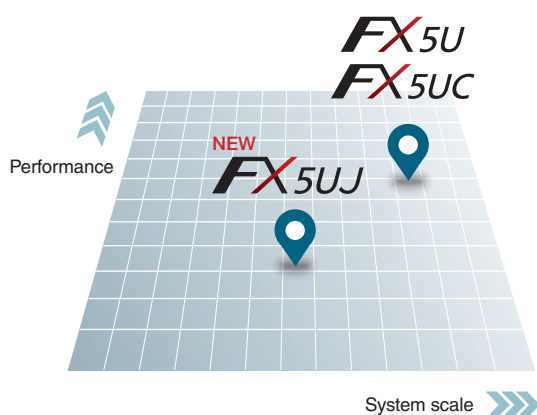


FX5UJ-40MR/ES AC D2 R
FX5UJ-40MT/ES AC D2 T1
FX5UJ-40MT/ESS AC D2 T2



FX5UJ-60MR/ES AC D2 R
FX5UJ-60MT/ES AC D2 T1
FX5UJ-60MT/ESS AC D2 T2

AC AC power supply D2 DC input (sink/source) R Relay output T1 Transistor output (sink) T2 Transistor output (source)



New CPU modules added to the MELSEC iQ-F series lineup

Highly functional models



FX5U/FX5UC

- Up to 512 points of control
- FX5U CPU module: 32/64/80 points
- FX5UC CPU module: 32/64/96 points



FX5UJ NEW

- Up to 256 points of control
- CPU module: 24/40/60 points

Basic specifications of the FX5UJ, which offers excellent performance at a reasonable price and can support a wide range of applications

Program capacity
48 k steps

Separate areas are used for data such as comments and labels, ensuring sufficient memory capacity.

Control scale
256 points

(1) No. of input/output points 256 points or less
(2) No. of remote I/O points 256 points or less
Total No. of points of (1) and (2) 256 points or less

Instruction execution speed
(LD, MOV instruction)
34 ns

The speed has been increased to approximately twice that of the FX3U.



Up to two communication adapters can be connected.*1

Up to 2 analog adapters can be connected.

Standard equipment

- SD memory card slot
- Built-in USB (Mini-B) connector
- Built-in Ethernet port (up to 8 connections)

Up to 8 I/O modules/intelligent function modules can be connected.*2

*1: The maximum number of devices is 1 when an expansion board is connected to the CPU module.
*2: The number of devices is limited by the intelligent function modules.

Enhanced built-in functions

Built-in positioning function

- Supports positioning of up to 3 axes
- Output pulse trains of 200 kpps (transistor output)



Built-in high-speed counter function

The CPU module has 8 channels of built-in high-performance high-speed counters. This enables match output and range output control that do not depend on the scan time.



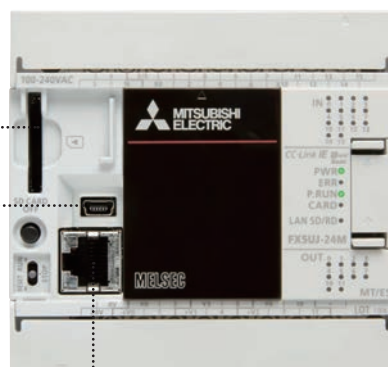
Enhanced built-in ports

SD memory card slot

Standard-equipped with an SD memory card slot, which is essential for functions such as logging and backup/restore.

USB (Mini-B) connector

Another interface for programming, in addition to the Ethernet port! The standard equipped USB (Mini-B) connector makes it easier to connect to engineering tools.



Ethernet port

The Ethernet port enables communication through **up to 8 connections** on the network.

CC-Link IE field network Basic is also supported.

This lets you construct a network with general-purpose Ethernet.

Take the first step toward switching to IoT with FX5UJ built-in functions

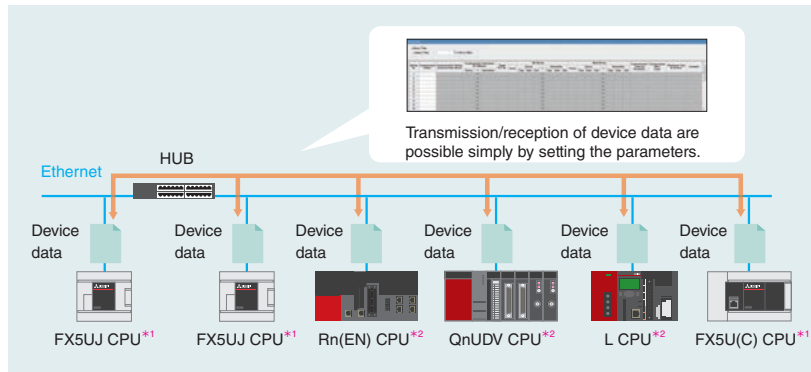
[FX5UJ support]

GX Works3: Ver. 1.060N or later, GX LogViewer and logging setting tool: Ver. 1.100E or later

Sharing information between manufacturing lines

Simple CPU communication function

Using a simple parameter setting with GX Works3, device data such as production data can be transferred without any program.



*1: Built-in Ethernet function *2: Requires connecting device configuration.

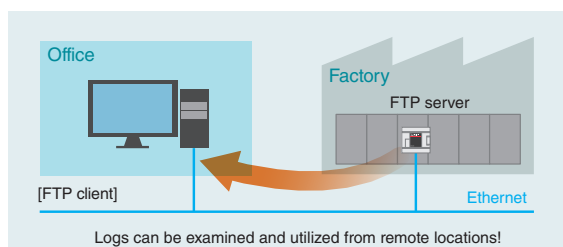
Sharing information
between manufacturing lines

Access from remote offices

Access from remote offices

FTP server function

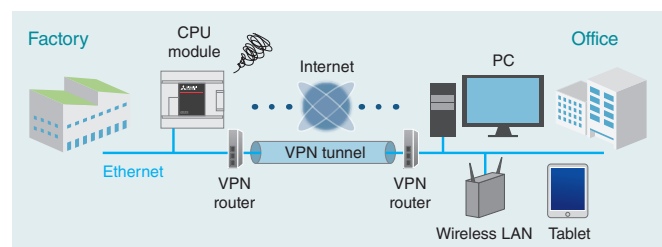
With the FTP server function, logging data can be acquired from a remote location without going to the site. Multiple logging files can be managed collectively from the office computer, reducing management and maintenance work.



Access from remote offices

Web server function

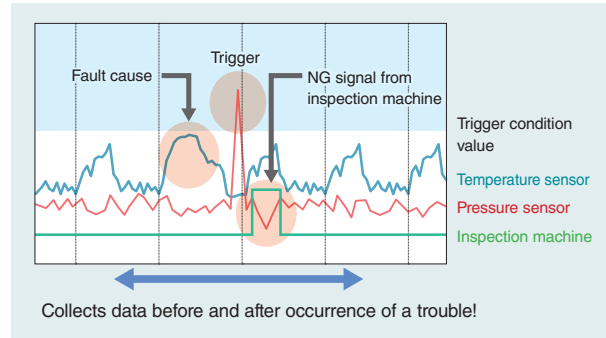
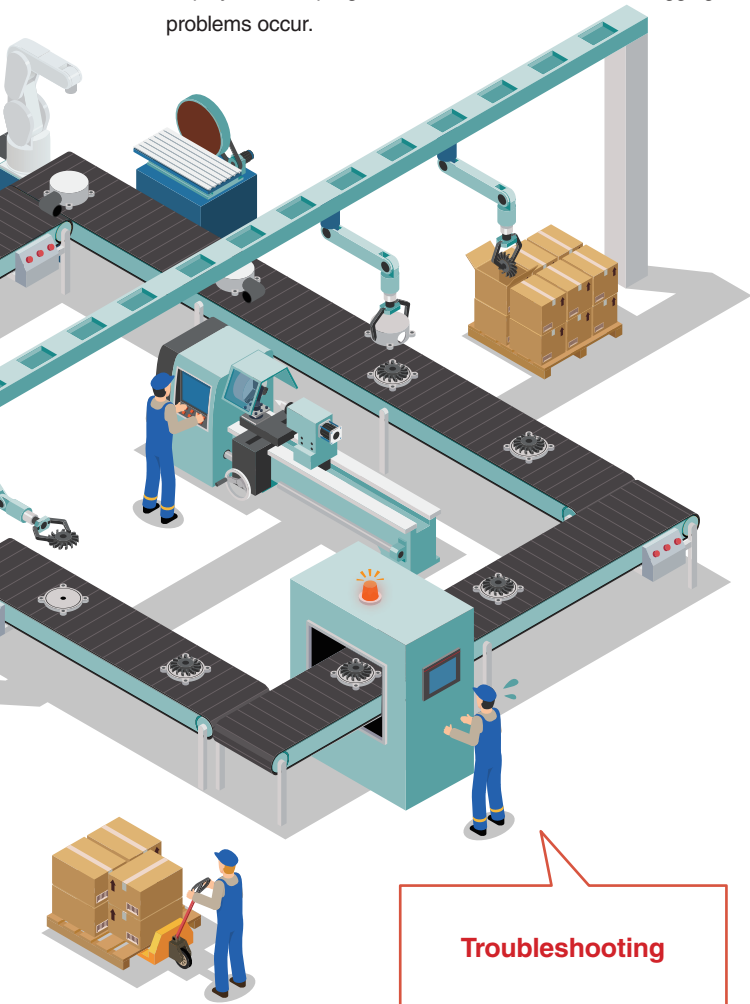
Accessing the Web server from a Web browser on a PC enables CPU module monitoring and diagnosis without any dedicated tools. The operating status of equipment at factories can be viewed from remote offices or when away from the site.



Troubleshooting

Data logging function

Information can be saved to the SD memory card periodically from the computer and network equipment. Using the saved data enables efficient analysis of device operating status and trouble causes. Furthermore, by using the offline monitor function with the data logging function, the logged device data can be monitored and displayed in the program editor. This is useful for debugging when problems occur.

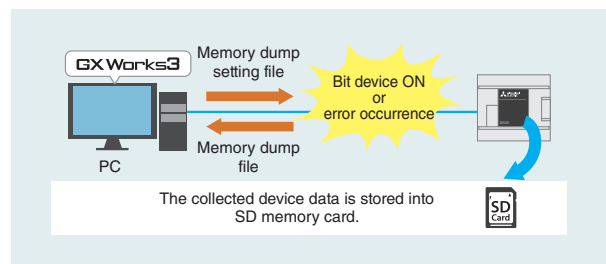


Troubleshooting

Memory dump function

The CPU module device value can be saved in the SD memory card at an arbitrary timing. By setting the trigger to be established when an error occurs, the status at error occurrence can be confirmed. This is helpful in investigating and pinpointing the cause.

The collection results can be confirmed with GX Works3.



Troubleshooting

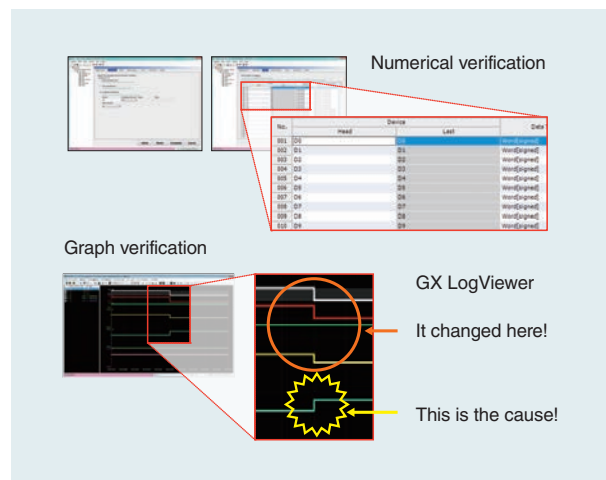
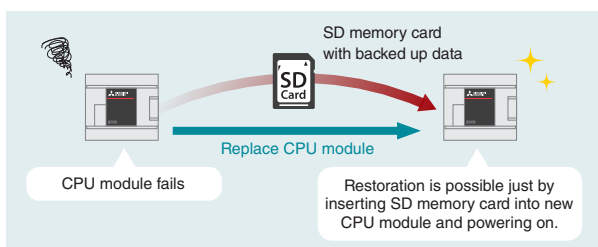
Real-time monitoring function

The contents of any devices can be monitored on real-time basis using GX LogViewer. The debugging efficiency is considerably improved at startup and troubleshooting. This function facilitates the resetting procedure, and enables graph check at a later time.

Troubleshooting

Backup/restore functions



The device/label data and data memory in the CPU module can be backed up to the SD memory card. Backed-up data can be restored as needed.



Some operation restrictions apply to each function. For details, refer to the manual.

Diverse FX5UJ functions

The FX5UJ is equipped with the same diverse range of built-in functions as the FX5U(C). This provides excellent performance at a reasonable cost and helps you switch to IoT.

| Item | | | MELSEC iQ-F Series | |
|----------------------------------|--------------------------------------|--------------------------------|--|---|
| | | | <div>NEW</div>  FX5UJ |  FX5U |
| Total number of control points | | | Total of 256 points (256 I/O points + 256 remote I/O points) | Total of 512 points (384 I/O points + 512 remote I/O points) |
| Operation speed | | | LD: 0.034 μ s | LD: 0.034 μ s |
| | | | MOV: 0.034 μ s | MOV: 0.034 μ s |
| Program capacity | | | 48 k step | 128 k step ^{*1} |
| Built-in functions ^{*1} | General-purpose communication ports | Ethernet | ✓ | ✓ |
| | | USB (Mini-B) | ✓ (MELSOFT connection) | — |
| | | RS-485 | — | ✓ |
| | Analog | | — | Analog input × 2 ch, analog output × 1 ch |
| | Positioning (Transistor output) | | 200 kpps × 3 axes | 200 kpps × 4 axes |
| | High-speed counter (1-phase 1-input) | | 100 kHz × 4 ch | 200 kHz × 8 ch |
| | | | 10 kHz × 4 ch | (FX5U-32M only: 200 kHz × 6 ch + 10 kHz × 2 ch) |
| | SD memory card slot | | ✓ | ✓ |
| | Maintenance functions | Data logging | ✓ | ✓ |
| | | Memory dump | ✓ | ✓ |
| | | Real-time monitoring | ✓ | ✓ |
| | | Backup/restore, Boot operation | ✓ | ✓ |
| | Network (Ethernet) | CC-Link IE Field Network Basic | ✓ (8 stations) | ✓ (16 stations) |
| | | Simple CPU communication | ✓ (8 stations) | ✓ (16 stations) |
| | | Others | MELSOFT connection, SLMP (3E frame), Socket communication, Predefined protocol support, MODBUS/TCP communication, Time setting function (SNTP client) | |
| | Other networks | | N:N network, parallel link, MC protocol, Inverter communication, Non-protocol communication, predefined protocol support, CC-Link, MODBUS/RTU communication, MELSOFT connection etc. | |
| | Firmware update | | ✓ | ✓ |
| | Ethernet related functions | FTP server function | | ✓ |
| | | Web server function | System Web page | ✓ |
| | | | User Web page | ✓ |
| | Clock function | Display data | | Year, month, day, hour, minute, second, day of week (leap year automatic detection) |
| | | Precision | | Differences per month ±45 sec./25°C (TYP) |
| | Power failure retention (clock data) | Retention method | | Large-capacity capacitor |
| | | Retention time | | 15 days (Ambient temperature: 25°C) |
| Expandability ^{*3} | Simple motion module | | Up to 1 module | Up to 16 modules |
| | Intelligent function module | | Up to 8 modules | Up to 16 modules |
| | Communication adapter | | Up to 2 modules ^{*4} | Up to 2 modules |
| | Analog adapter | | Up to 2 modules | Up to 4 modules |
| | Expansion board | | Up to 1 module | Up to 1 module |

✓: Supported —: Not supported

^{*1}: For the FX5U, there are restrictions on the versions that support each function. For details, refer to the manual.

^{*2}: This can be maintained with the optional battery.

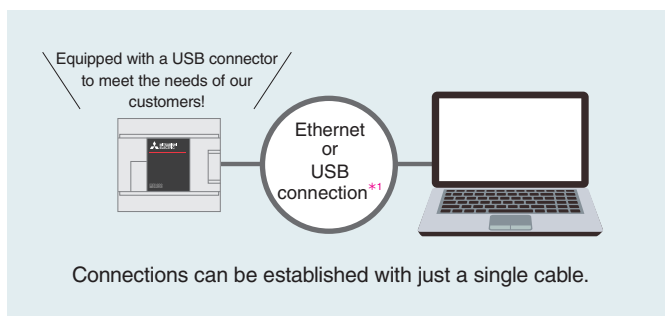
^{*3}: For the intelligent function modules and the expansion adapters, the same types of products as with the FX5U(C) can be used.

There are restrictions on the number of extension modules that can be connected to a single CPU module system. For details, refer to the manual.

^{*4}: The maximum number of communication adapters that can be connected is one when an expansion board is connected to the CPU module.

Easy programming with GX Works3

[FX5UJ support] GX Works3: Ver. 1.060N or later

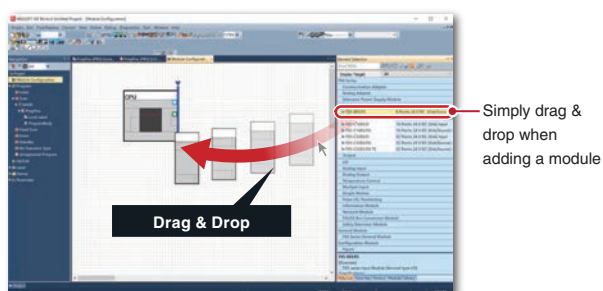


GX Works3 is the next generation of our engineering software. It is simple and easy to use while still supporting structured programming and offering a diverse suite of new functions and technologies designed for MELSEC iQ-R series and iQ-F series control systems. This one piece of software can be used to intuitively perform operations ranging from system design to maintenance, reducing development costs.

An introduction to GX Works3 functions

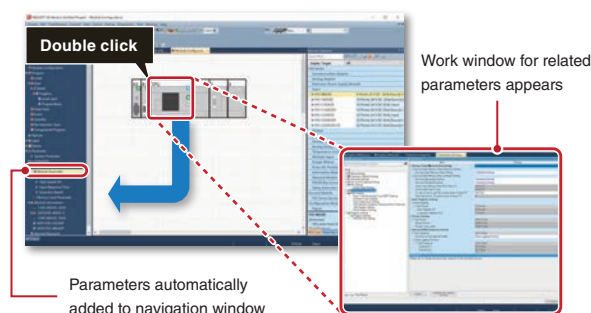
System design with a convenient parts library

With GX Works3, designing a system is as easy as preparing the module configuration diagram by dragging and dropping selected parts.



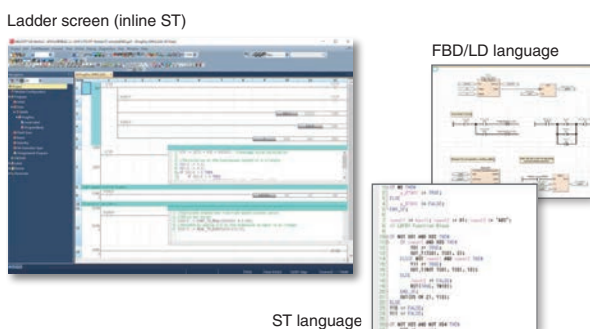
Auto-generation of module parameters

When preparing the module configuration diagram, simply double-click the module to automatically generate the module parameters.



Main programming languages supported

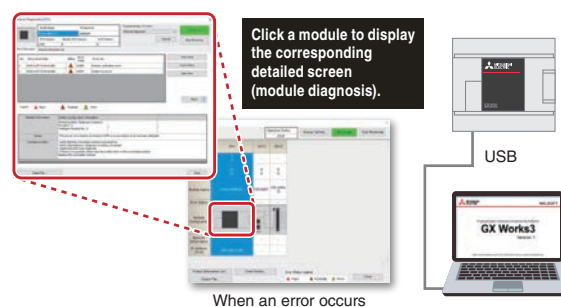
The main IEC languages are supported by GX Works3. Various different programming languages can be used within the same project simultaneously and can be viewed easily via the menu tab.



Automatically start diagnoses just by establishing a USB connection

Just establish a USB connection between the PC and the CPU module to make GX Works3 automatically start a diagnosis. The module where the error occurred, error information, and corrective actions will all be displayed.

This lets you quickly check information and procedures required for troubleshooting.



*1: The driver is installed automatically when the PC and CPU module are connected. If the driver is not installed automatically, install it manually. For details, refer to the MELSEC iQ-F FX5 User's Manual (Application).

PROGRAMMABLE CONTROLLERS

MELSEC iQ-F Series

■ Generic specifications (For details, refer to the manual.)

| Item | Specifications |
|-------------------------------|------------------------------|
| Operating ambient temperature | 0 to 55°C, non-freezing |
| Storage ambient temperature | -25 to 75°C, non-freezing |
| Operating ambient humidity | 5 to 95%RH, non-condensation |
| Storage ambient humidity | 5 to 95%RH, non-condensation |


■ Power supply specifications

| Item | Specifications |
|--|---|
| Rated voltage | 100 to 240 V AC |
| Voltage fluctuation range | -15%, +10% |
| Frequency rating | 50/60 Hz |
| Allowable instantaneous power failure time | Operation can be continued upon occurrence of instantaneous power failure for 10 ms or less. When the supply voltage is 200 V AC or higher, the time can be change to 10 to 100 ms by editing the user program. |
| Power fuse | 250 V, 3.15 A Time-lag fuse |
| Rush current | FX5UJ-24M□ 25 A max. 5 ms or less/100 V AC |
| | FX5UJ-40M□, FX5UJ-60M□ 50 A max. 5 ms or less/200 V AC |
| | 30 A max. 5 ms or less/100 V AC 50 A max. 5 ms or less/200 V AC |
| Power consumption *1 | FX5UJ-24M□ 30 W |
| | FX5UJ-40M□ 32 W |
| | FX5UJ-60M□ 35 W |
| 24 V DC service power supply capacity *2 | FX5UJ-24M□ 400 mA *3, 460 mA *4 |
| | FX5UJ-40M□ 400 mA *3, 500 mA *4 |
| | FX5UJ-60M□ 400 mA *3, 550 mA *4 |

- *1: This item shows value when all 24 V DC service power supplies are used in the maximum configuration connectable to the CPU module. (The current of the input circuit is included.)
- *2: When I/O modules are connected, they consume current from the 24 V DC service power supply.
- *3: Supply capacity when 24 V DC service power supply is used for input circuit of the CPU module.
- *4: Supply capacity when external power supply is used for input circuit of the CPU module.

■ 24 V DC input (sink/source)

(For the input circuit configuration, refer to the manual.)

| Item | | Specifications |
|--|--------------------|--|
| No. of input points | | FX5UJ-24M□: 14 points, FX5UJ-40M□: 24 points, FX5UJ-60M□: 36 points |
| Connection type | | Removable terminal block (M3 screws) |
| Input type | | Sink/source |
| Input signal voltage | | 24 V DC +20%, -15% |
| Input signal current | | [X0 to X7] 5.3 mA/24 V DC [X10 and subsequent] 4.0 mA/24 V DC |
| Input impedance | | [X0 to X7] 4.3 kΩ [X10 and subsequent] 5.6 kΩ |
| ON input sensitivity current | | [X0 to X7] 3.5 mA or more [X10 and subsequent] 3.0 mA or more |
| OFF input sensitivity current | | 15 mA or less |
| Input response frequency | X0, X1, X3, X4 | 100 kHz (When capturing pulses of a response frequency of 50 to 100 kHz, refer to the manual.) |
| | X2, X5, X6, X7 | 10 kHz |
| Pulse waveform | Waveform |  |
| | | T1 (pulse width) |
| | X0, X1, X3, X4 | 5 μs or more |
| | X2, X5, X6, X7 | 50 μs or more |
| Input response time (H/W filter delay) | X0, X1, X3, X4 | ON: 5 μs or less OFF: 5 μs or less |
| | X2, X5, X6, X7 | ON: 30 μs or less OFF: 50 μs or less |
| | X10 to X17 | ON: 50 μs or less OFF: 150 μs or less |
| | X20 and subsequent | ON: Approx. 10 ms OFF: Approx. 10 ms |
| Input response time (Digital filter setting value) | X10 to X17 | None, 10 μs, 50 μs, 0.1 ms, 0.2 ms, 0.4 ms, 0.6 ms, 1 ms, 5 ms, 10 ms (initial values), 20 ms, 70 ms When using this product in an environment with much noise, set the digital filter. |
| Input signal format (Input sensor form) | | No-voltage contact input Sink: NPN open collector transistor Source: PNP open collector transistor |
| Input circuit insulation | | Photo-coupler insulation |
| Indication of input operation | | LED is lit when input is ON |

⚠ Safety Warning

To ensure proper use of the products in this document, please be sure to read the instruction manual prior to use.

■ Relay output (For the output circuit configuration, refer to the manual.)

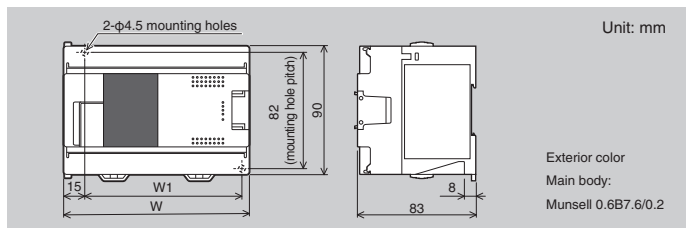
| Item | Specifications |
|--------------------------------|--|
| No. of output points | FX5UJ-24MR/ES: 10 points, FX5UJ-40MR/ES: 16 points, FX5UJ-60MR/ES: 24 points |
| Connection type | Removable terminal block (M3 screws) |
| Output type | Relay |
| External power supply | 30 V DC or less 240 V AC or less ("250 V AC or less" if not a CE, UL, cUL compliant item) |
| Max. load | 2 A/point The total load current per common terminal should be the following value. • 3 output points/common terminal: 6 A or less *5 • 4 output points/common terminal: 8 A or less *5 |
| Min. load | 5 V DC, 2 mA (reference values) |
| Open circuit leakage current | — |
| Response time | OFF→ON: Approx. 10 ms ON→OFF: Approx. 10 ms |
| Output circuit insulation | Mechanical insulation |
| Indication of output operation | LED is lit when output is ON |

■ Transistor output (For the output circuit configuration, refer to the manual.)

| Item | Specifications |
|--------------------------------|--|
| No. of output points | FX5UJ-24MT/□: 10 points, FX5UJ-40MT/□: 16 points, FX5UJ-60MT/□: 24 points |
| Connection type | Removable terminal block (M3 screws) |
| Output type | FX5UJ-□MT/ES: Transistor/sink output FX5UJ-□MT/ESS: Transistor/source output |
| External power supply | 5-30 V DC |
| Max. load | 0.5 A/point The total load current per common terminal should be the following value. • 3 output points/common terminal: 0.6 A or less *5 • 4 output points/common terminal: 0.8 A or less *5 |
| Open circuit leakage current | 0.1 mA or less/30 V DC |
| Voltage drop when ON | [Y0 to Y2] 1.0 V or less [Y3 and subsequent] 1.5 V or less |
| Response time | [Y0 to Y2] 2.5 μs or less/10 mA or more (5-24 V DC) [Y3 and subsequent] 0.2 ms or less/200 mA or more (24 V DC) |
| Output circuit insulation | Photo-coupler insulation |
| Indication of output operation | LED is lit when output is ON |

*5: For details on the common, refer to the manual.

■ External dimensions



| Item | W | W1 (mounting hole pitch) | Mass (weight) |
|------------|--------|--------------------------|-----------------|
| FX5UJ-24M□ | 95 mm | 76 mm | Approx. 0.55 kg |
| FX5UJ-40M□ | 130 mm | 111 mm | Approx. 0.65 kg |
| FX5UJ-60M□ | 175 mm | 156 mm | Approx. 0.80 kg |

■ Product list

| Item | Rated voltage | Input specifications | | Output specifications | |
|----------------------|---|--|---------------------|-----------------------|-------------------|
| | | No. of input points | Input type | No. of output points | Output type |
| FX5UJ-24MR/ES | 100 V AC to 240 V AC | 14 | 24 V DC sink/source | 10 | Relay |
| FX5UJ-24MT/ES | | | | | Transistor/sink |
| FX5UJ-24MT/ESS | | | | | Transistor/source |
| FX5UJ-40MR/ES | | 24 | | 16 | Relay |
| FX5UJ-40MT/ES | | | | | Transistor/sink |
| FX5UJ-40MT/ESS | | | | | Transistor/source |
| FX5UJ-60MR/ES | | 36 | | 24 | Relay |
| FX5UJ-60MT/ES | | | | | Transistor/sink |
| FX5UJ-60MT/ESS | | | | | Transistor/source |
| FX5UJ-U-HW-E | | MELSEC iQ-F FX5UJ User's Manual (Hardware) | | | |
| FX5-U-OU-E | MELSEC iQ-F FX5 User's Manual (Application) | | | | |
| MR-J3USBCBL3M [3 m] | USB cables for connecting a PC | | | | |
| GT09-C30USB-5P [3 m] | | | | | |

Registration

- Ethernet is a registered trademark of Fuji Xerox Co., Ltd. in Japan.
- The SD and SDHC logos are trademarks of SD-3C, LLC.
- The company names, system names and product names mentioned in this document are either registered trademarks or trademarks of their respective companies.
- In some cases, trademark symbols such as "™" or "®" are not specified in this document.

MITSUBISHI ELECTRIC CORPORATION

HEAD OFFICE: TOKYO BLDG., 2-7-3, MARUNOUCHI, CHIYODA-KU, TOKYO 100-8310, JAPAN

<http://Global.MitsubishiElectric.com>