



# GLENN

**CRANE & RIGGING**  
A Division of Glenn Machine Works

**Columbus, MS**  
(662)328-4611  
888-868-4611

**Meridian, MS**  
Sales inquiries only.  
(601) 934-4600

**Ocean Springs, MS**  
(228) 875-1877

**Mobile, AL**  
Sales inquiries only.  
(228)-875-1877

**Hattiesburg, MS**  
(601) 544-1275

**New Orleans, LA**  
Sales inquiries only.  
(504) 279-5758

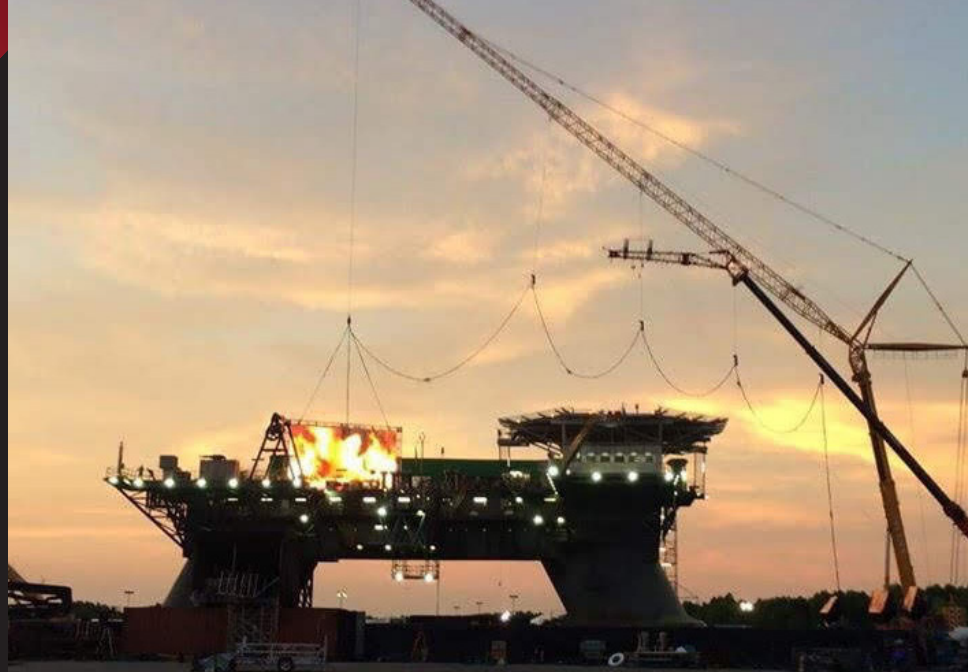
Stay in touch! Be sure to connect  
with us on Facebook and LinkedIn!



**GLENN**  
MACHINE WORKS

Glenn Crane and Rigging is a division of Glenn Machine Works.

[GLENNMACHINEWORKS.COM](http://GLENNMACHINEWORKS.COM)



# GLENN

**CRANE & RIGGING**

A Division of Glenn Machine Works

**Machine and Fabrication Shop**  
**Mechanical and Electrical**  
**Steel Fabrication**  
**Crane Services**  
**Field Services**  
**Mill Services**

Glenn Crane and Rigging is a **full service crane and rigging company** specializing in heavy haul / transportation, engineered heavy rigging, heavy lift systems, heavy lift cranes, jacking, sliding, and gantry systems, as well as specialty fabrication. RT's are available up to 80 ton and mobile cranes up to 500 ton. We realize that each project is unique, and our experience allows us to anticipate your needs and provide innovative solutions for each challenge.

**GLENN**  
MACHINE WORKS

Glenn Crane and Rigging is a division of Glenn Machine Works.

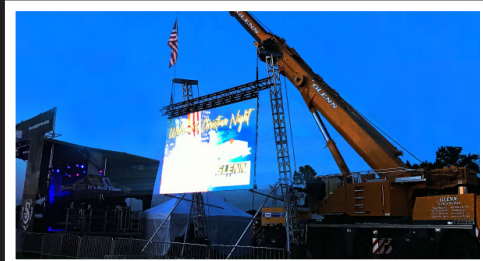
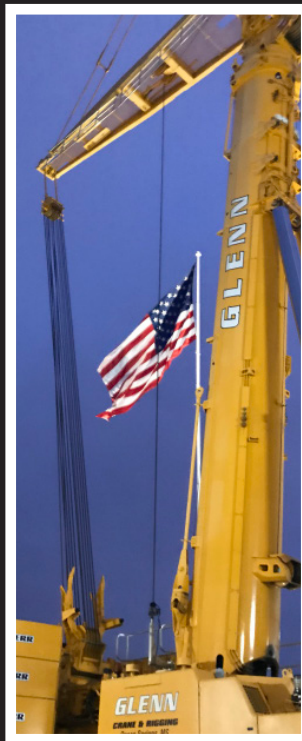
# OUR EQUIPMENT

## CRANES

- (1) 500 T. A/T
- (1) 360 T. A/T
- (2) 300 T. A/T
- (3) 265 T. A/T
- (1) 190 T. A/T
- (2) 155 T. A/T
- (2) 120 T. A/T
- (1) 90 T. R/T
- (1) 80 T. R/T
- (1) 70 T. R/T
- (1) 65 T. R/T
- (4) 55 T. R/T
- (3) 50 T. R/T
- (1) 40 T. R/T
- (1) 35 T. R/T
- (1) 30 T. R/T
- (1) 110 T. Truck Crane
- (2) 100 T. Truck Crane
- (4) 80 T. Truck Crane
- (1) 75 T. Truck Crane
- (3) 60 T. Truck Crane
- (1) 40 T. Boom Truck
- (3) 30 T. Boom Truck
- (2) 28 T. Boom Truck
- (2) 17 T. Boom Truck
- (2) 8.5 T. Carry Deck
- (1) 18 T. Carry Deck
- (2) 9 T. Carry Deck

## TRUCKS & LOWBOYS

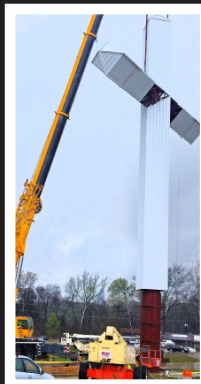
- 150 T. Heavy Haul Trailer
- 60 K. Rigger Lift w/ Boom
- 80 K. Rigger Lift w/ Boom
- Complete Rigging Services
- Man Baskets
- Skid Pans
- Spreaderbars
- Rolling Blocks
- Bare Rent Cranes



Contact one of our local representatives, and allow us to put this equipment to work for you.

## DID YOU KNOW?

The owner and Crosses Across America exhausted 3 years of planning and permits including one site relocation and one month to assemble. Glenn Crane was afforded the opportunity to erect the 110' tall by 57' wide cross in Florence, MS at the new Berry's Seafood located on Hwy 49N. The 50,000 lb. cross took approximately 30 minutes to erect, and Glenn was certainly proud to be a part of this project.



## SAFETY TIPS

At Glenn, all of our operators are NCCCO certified and have extensive experience in the seat, and all of our riggers are tested and certified as well. We take safety serious at Glenn Crane and Rigging.

### YOU NEED A CERTIFIED OPERATOR.

Cranes are potential weapons of mass destruction. In the wrong hands, disaster could unfold. Your riggers should also be trained. They should know how to calculate and set up specific loads in the most unique situations.

### INSPECT. INSPECT AGAIN... AND AGAIN.

Sure, your crane needs its annual inspection, but don't stop there. There's more to the OSHA crane standard. You should examine the operation function every day. Any defect or crack should be noted immediately. Everything should be running smoothly and properly.

Overhead crane safety tips are important. These cranes have worked in extreme conditions for years. They can fail if they become too brittle or weak from the decades of heat in an industrial setting. Be sure your workers understand overhead crane safety rules thoroughly. Use safety consulting firms like Safety by Design to train your workers. You'll increase crane operation safety and production as well.

### LOOK BELOW.

The surface is important. Your crane won't function as it should if it rests on an unlevel ground. Classify the soil. Take note of the material under your crane. You'll have to adjust your loads and limits accordingly. Tipping accidents occur because of this oversight. Load charts come in handy even when you're working on asphalt or concrete. You must take crane lifting safety another step further: what's under the asphalt and concrete?

Crane outrigger safety is essential, too. Many cranes have outriggers. But extension does not equal a stable surface. Outriggers displace the weight, but the compression force could punch through the ground or surface.

### PLAN FOR SWING.

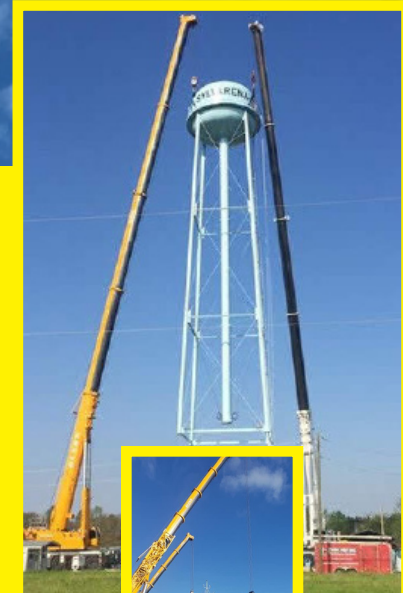
The swing radius is crucial. That area within the radius needs to be barricaded. The boom should be able to smoothly travel without hitting anything. Power lines can become a disastrous mess in this area of OSHA crane safety.

### PAY ATTENTION.

OSHA crane regulations are in place for serious reasons. The more you communicate these rules, the better everyone will memorize and practice them. Establishing clear lines of communication with hand signals, horns, or radios is a great idea. Use the OSHA crane safety handbook to identify proper signals. Teach your workers this all-important workplace language.

### ALWAYS HAVE A PLAN IN PLACE.

Every lift is different from the last. You need a plan, and you need to stick to it. Inspecting the equipment is vital. But assessing the loads, capacities, and even the weather (among other factors) represents the required path. Get everyone involved - the operator, riggers, and other workers.



PROVIDING YOU WITH THE HIGHEST QUALITY OF SERVICE.