

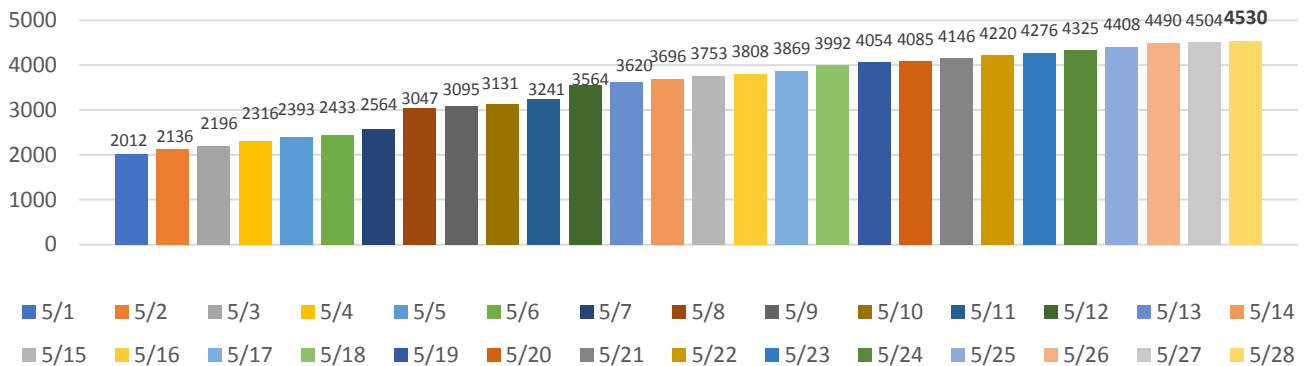


Empowering Our Community Through Comprehensive Strategies

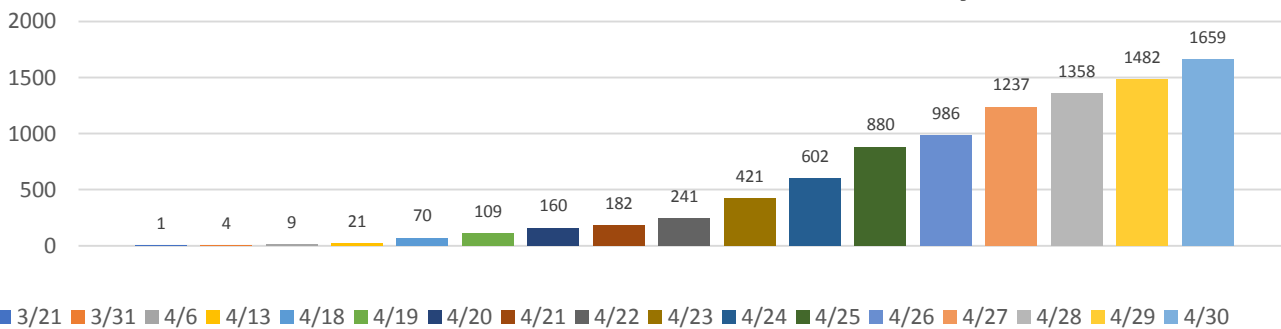
Source For Siouxland reminds you that community data is available for your grant writing needs and community or agency planning initiatives at www.sourceforsiouxland.com.

As of Thursday, May 28, 2020, there were **4,530** confirmed COVID-19 cases in the tri-state area.

Total Confirmed Siouxland COVID-19 Cases by Date



Total Confirmed Siouxland COVID-19 Cases by Date



Counties include Woodbury and Plymouth, Iowa; Dakota, Nebraska; and Union, South Dakota.

Composite data compiled by Source For Siouxland from Iowa, Nebraska, and South Dakota

Health Departments, Siouxland District Health Dept., and Dakota County Health Dept.

Note: Number of positive tests will increase with increased testing.