

## BVMS 9.0 and PTZ Presets

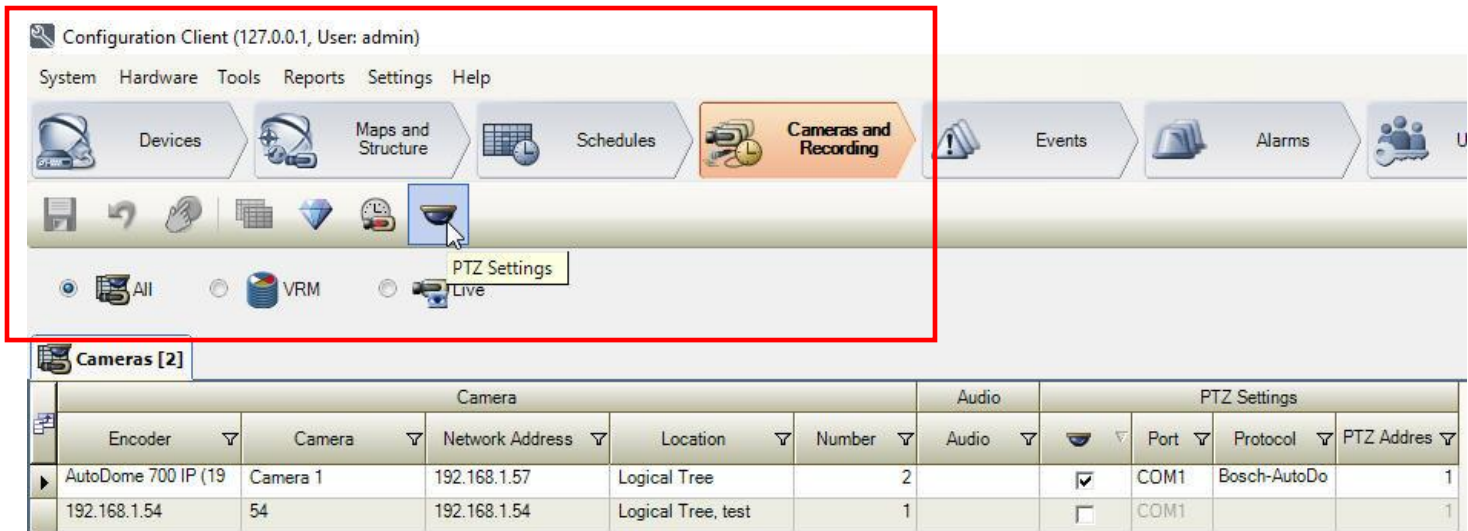
While most vendor PTZ cameras have the ability to store up to 99 presets, in most deployments only a handful are ever utilized. The typical number of presets actually configured is between 10 and 15. In order to better utilize system resources, BVMS 9.0 no longer pre-allocates 99 black presets to newly added PTZ cameras in the system. BVMS 9.0 does not read any existing presets already configured in the camera.

This technical brief will provide the step-by-step procedure on how to configure “BVMS” presets and save views.

*Note: If upgrading from an earlier version of BVMS to 9.0, all preset information is automatically carried over during the upgrade process.*

### Creating Presets and Preset Placeholders:

From Configuration Client select the “Cameras and Recording” menu and the “All” menu. Select a PTZ in the cameras list, and then select the “PTZ Settings” icon in the tool bar.



The screenshot shows the Configuration Client interface (127.0.0.1, User: admin). The top menu bar includes System, Hardware, Tools, Reports, Settings, and Help. The main toolbar contains icons for Devices, Maps and Structure, Schedules, Cameras and Recording, Events, Alarms, and Users. The 'Cameras and Recording' menu is highlighted. Below it, the 'All' menu is selected. The 'PTZ Settings' icon is highlighted in the toolbar. The 'Cameras [2]' tab is active, displaying a table of camera configurations.

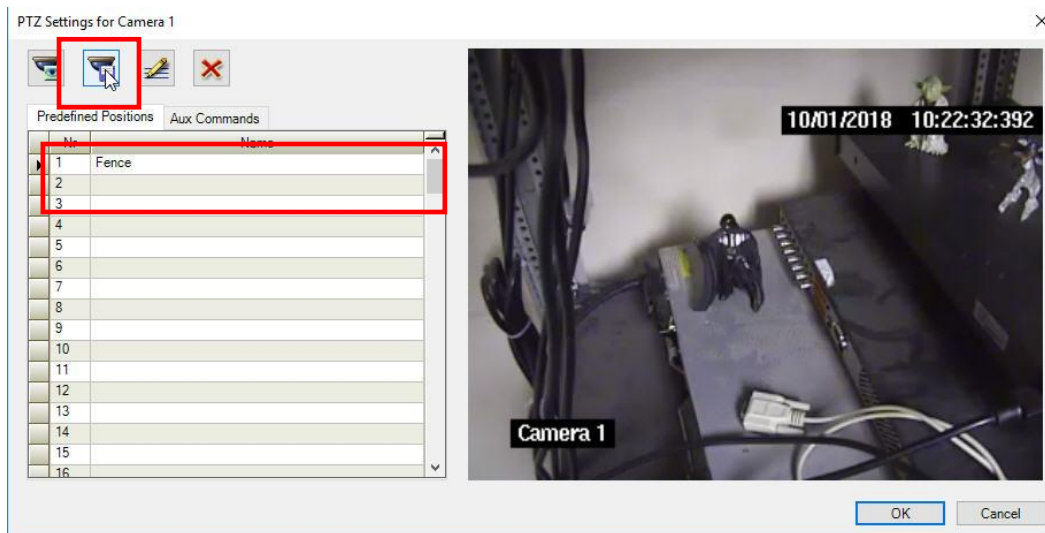
Camera						Audio	PTZ Settings			
Encoder	Camera	Network Address	Location	Number	Audio	PTZ	Port	Protocol	PTZ Address	
AutoDome 700 IP (19	Camera 1	192.168.1.57	Logical Tree	2		<input checked="" type="checkbox"/>	COM1	Bosch-AutoDo	1	
192.168.1.54	54	192.168.1.54	Logical Tree, test	1		<input type="checkbox"/>	COM1		1	

*Note: Presets configured in the “Devices” menu will not be read by Operator Client!*

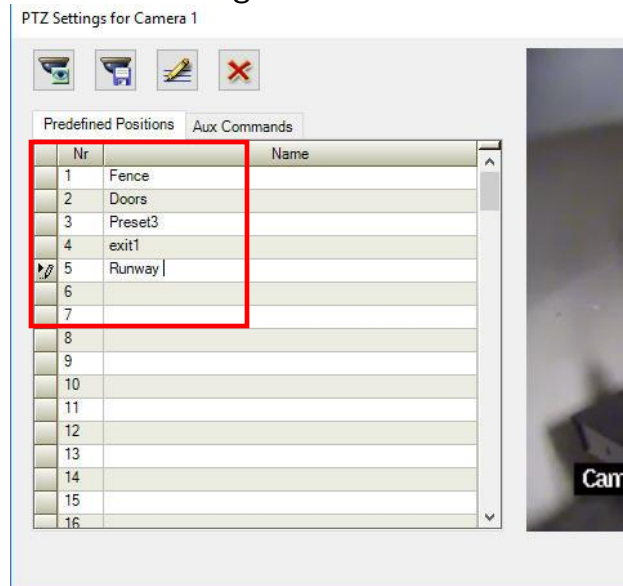
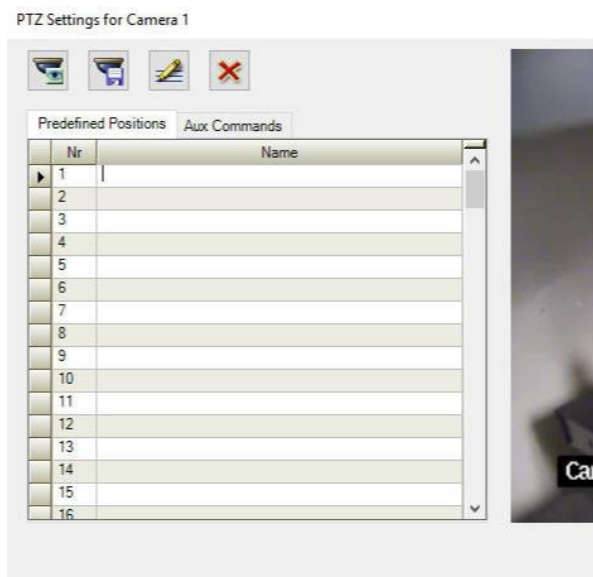
Once the “PTZ Settings” menu opens, the “Predefined Positions” menu allows you to create and save presets as well as “Preset Placeholders”

To create a preset, move the camera to the desired location:

- Name the Preset
- Select the “Save Preset” tab
- Select OK, save and activate changes



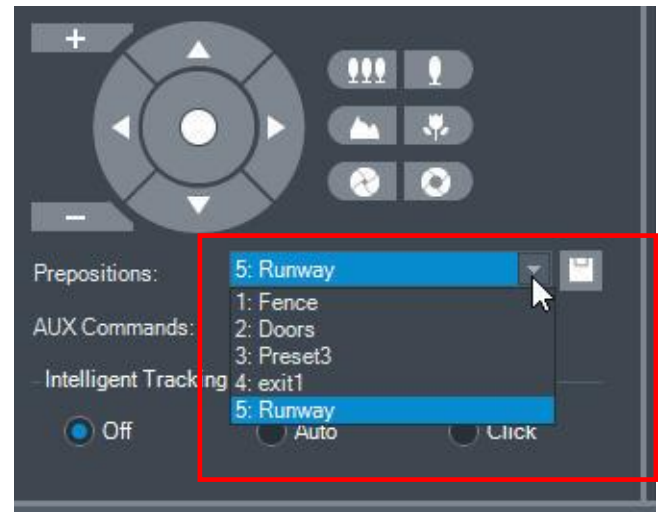
To create *placeholders* that will be available in Operator Client, simply add names to the number of presets you want available. Select “Ok”, then save and activate changes



## Operator Client

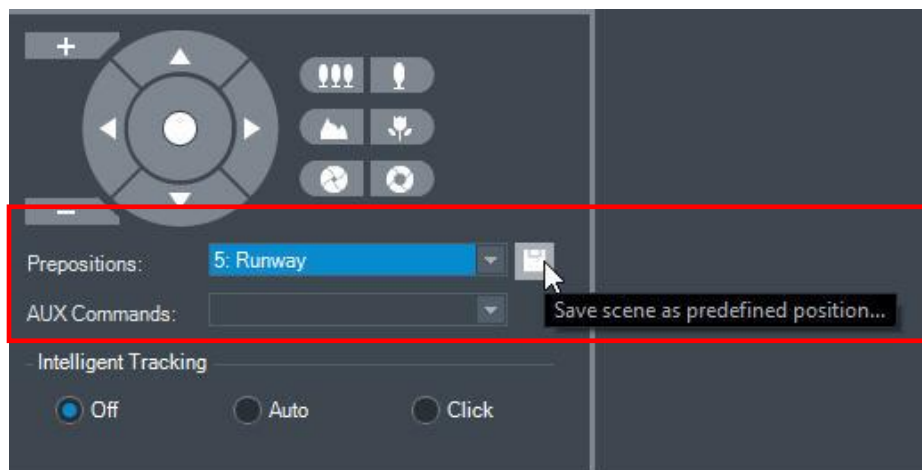
In operator client, predefined presets can be selected utilizing the preset dropdown menu below the logical tree.

From the dropdown menu, select the desired preset, and the camera will move to the position.

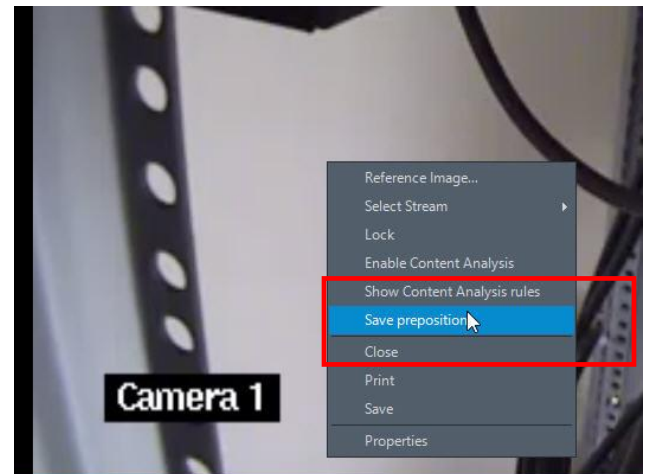


## Saving Presets:

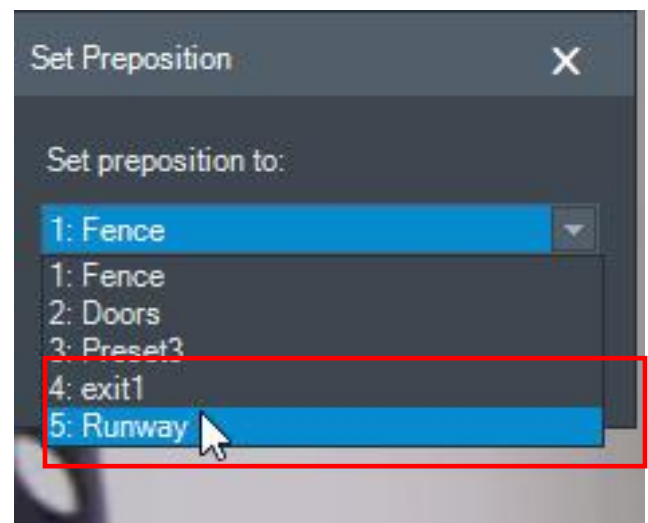
Presets can be saved in one of two ways. The first method is using the PTZ menu. After moving the camera to the desired position, a predefined *placeholder* can be selected in the “Prepositions” dropdown menu. Once the desired placeholder is highlighted, select the “Save” tab.



Presets can also be saved by right clicking the active video cameo and selecting the “Save preposition” menu option



From the “Set Preposition” pop up menu, select the desired “placeholder”



After you have selected the desired placeholder, select “OK”

