



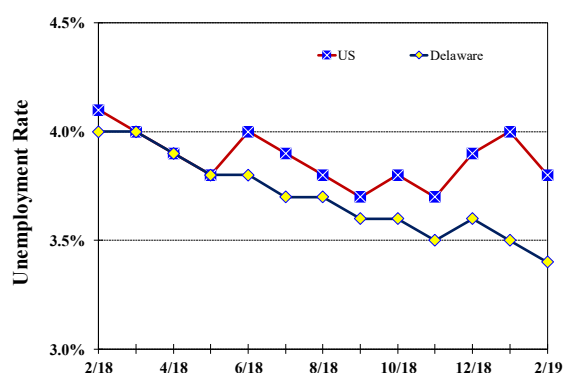
Cerron Cade, Secretary

Monthly Labor Review

February 2019

Unemployment Rate

Delaware and US
February 2018 - February 2019



Monthly Commentary

Out of the current resident population of 776,400 Delawareans*, 75,400 are veterans. Just under half, 35,000, are employed. Most of the rest are out of the labor force, mostly retired, as only 1,100 are actively seeking work. This gives veterans an unemployment rate of 3.0 percent, below the rate of 3.5 percent for nonveterans. Those who have left military service more recently have even lower unemployment rates. There are 9,700 Gulf War I era veterans (service from Aug. 1990 – Aug. 2001) living in DE, with 7,300 holding jobs. Their unemployment rate is also 3.0 percent. Gulf War II era veterans, those with service since Sept. 2001, have an even lower unemployment rate of 2.2 percent. There are 12,900 of these most recent veterans living in DE, and 10,600 are employed.

Nationally, veterans don't fare quite as well in the workforce as they do in Delaware. The national unemployment rate for all veterans is 3.4 percent; this is a little below the rate for nonveterans of 3.8 percent. Gulf War II era veterans across the US have an average unemployment rate of 3.9 percent, substantially above the corresponding DE rate of 2.2 percent.

**Total population is for civilians ages 16+ not in institutions; veterans is 18+. All data are from the Current Population Survey, 12-month average ending Feb. 2019.*



Delaware Civilian Labor Force Delaware Residents

	Feb. 2019	Jan. 2019	Feb. 2018
Civilian Labor Force	485,100	484,200	480,800
Employed	468,700	467,300	461,400
Unemployed	16,400	16,900	19,400
Unemployment Rate %	3.4	3.5	4.0
US Unemployment Rate %	3.8	4.0	4.1

Source: Delaware Dept. of Labor in cooperation with the US Dept. of Labor, Bureau of Labor Statistics.

Area Unemployment Rates (%)

	Feb. 2019	Jan. 2019	Feb. 2018
New Castle County	3.2	3.4	4.1
Wilmington	4.5	5.0	5.6
Newark	2.6	2.8	3.9
Kent County	3.6	3.8	4.8
Dover	4.6	4.9	5.9
Sussex County	4.0	4.4	4.9

Note: Area rates are not seasonally adjusted.

Source: Delaware Dept. of Labor in cooperation with the US Dept. of Labor, Bureau of Labor Statistics.

Office of Occupational and Labor Market Information
For data questions, contact: George Sharpley, Ph.D. (302) 761-8060

Delaware Labor Force Trends

Delaware's seasonally adjusted unemployment rate in February 2019 was 3.4%, down from 3.5% in January 2019. There were 16,400 unemployed Delawareans in February 2019 compared to 19,400 in February 2018. The US unemployment rate was 3.8% in February 2019, down from 4.0% in January 2019. In February 2018 the US unemployment rate was 4.1%, while Delaware's rate was 4.0%.

In February 2019, seasonally adjusted nonfarm employment was 465,200, up from 465,000 in January 2019. Since February 2018, Delaware's total nonfarm jobs have increased by a net gain of +5,100, a rise of 1.1%. Nationally, jobs during that period increased 1.7%.

Delaware Nonfarm Employment

Jobs at Delaware Locations
Seasonally Adjusted (in 000s)

INDUSTRY GROUP	Feb. 2019	Jan. 2019	Over the Month Change	Over the Year Change†
TOTAL NONAG. EMP.	465.2	465.0	0.2	5.1
CONSTRUCTION	22.9	23.6	-0.7	0.9
MANUFACTURING	27.6	27.4	0.2	0.6
Durable Goods	9.7	9.7	0.0	0.2
Nondurable Goods	17.9	17.7	0.2	0.4
TRADE, TRANSP., & UTIL.	79.8	79.3	0.5	-1.0
Wholesale Trade	11.2	11.2	0.0	0.7
Retail Trade	52.6	52.2	0.4	-0.9
Transp. & Utilities	16.0	15.9	0.1	-0.8
INFORMATION *	3.8	3.8	0.0	-0.5
FINANCIAL ACTIVITIES	47.8	47.5	0.3	-0.2
PROF. & BUS. SERVICES	62.7	63.1	-0.4	-0.4
EDUCATION & HEALTH	81.7	81.6	0.1	2.7
LEISURE & HOSPITALITY	53.8	53.4	0.4	1.6
OTHER SERVICES	18.6	18.4	0.2	0.1
GOVERNMENT	66.5	66.9	-0.4	1.3
Federal Government	5.7	5.6	0.1	0.0
State Government	32.6	33.1	-0.5	0.1
Local Government	28.2	28.2	0.0	1.2

* Industries are not seasonally adjusted.

† Annual changes are not seasonally adjusted.

Details may not add up due to rounding and seasonal adjustment.

Source: US Department of Labor, Bureau of Labor Statistics.

Office of Occupational and Labor Market Information

For data questions, contact:

George Sharpley, Ph.D.

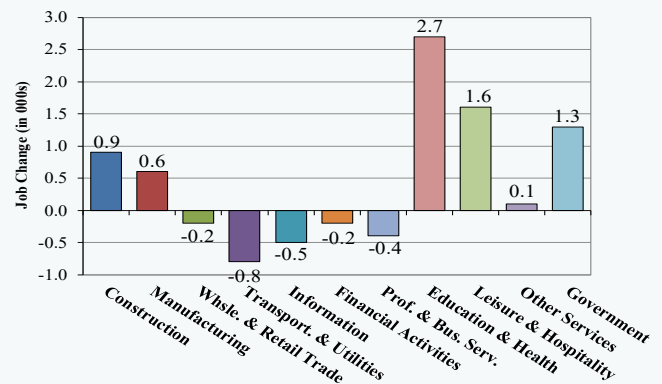
(302) 761-8060

<https://lmi.delawareworks.com>



Delaware Over-the-Year Job Change

February 2018—February 2019



Consumer Price Index

All Urban Consumers

	Percent Change to Feb. 2019 from:		
	Jan. 2019	Dec. 2018	Feb. 2018
US City Average	0.4	0.6	1.5
Phila.-Camden-Wilm.*	NA	0.8	1.5

* Data are published on a bi-monthly basis.

Delaware Annual Net Job Change

Annual Average 1998—2018

