

Assembly Parts

A. Fin Nut*	K. Clevis Pin Screws	U. Actuator Cylinder
B. Actuator Shaft Stud	L. HDPE Washers (4X)	V. Position Sensor Cover
C. Weld-in Hull Assembly (WHA) (Note 2)	M. Lock Assembly Platform	Va. Position Sensor Cover Screw
Ca. Bolt-on Hull Insert	N. Yoke Locking Cylinder	W. Sensor Cable Cover
Cb. Weld-in Hull Insert (Note6)	O. Locking Housing	Wa. Sensor Cable Cover Screw
Cc. WHA Bolt	Oa. Locking Housing Bolt	X. Cylinder Mount
D. Platform Flange (Note 4)	P. Clevis Pin	Xa. Cylinder Mount Bolt
E. Augmented Hull Thickness (Note 1)	Q. Outboard Seal Housing Screw	Xb. Cylinder Mount Dowel Pin
F. Hull Flange Gusset (Note 3)	R. Yoke Clamping Bolt	Y. Support Plate
G. Hull Framing (Note 3)	S. Top Plate	Z. Support Plate Bolts
H. Inboard Seal Housing Screw	Sa. Top Plate Screw	
J. Actuator Flange Bolt	T. Top Plate Standoff	

Assembly Fasteners

Part	Description	Qty	Size # or inch	Install Torque ft-lb / (Nm)	Install with Coating**
A	Fin Nut *	1	M36 - 4.0	800 / (1085)	Loctite 262
Cc	WHA Bolt	8	5/8 - 11	87 / (120)	--
H	Inboard Seal Housing Screw	6	M10 - 1.50	27 / (36.6)	M
J	Actuator Flange Bolt	8	M24 - 3.0	400 / (542)	H
K	Clevis Pin Screws	8	5/16 - 18	30 / (40)	M
Oa	Locking Housing Bolt	4	M12 - 1.75	75 / (102)	M
P	Clevis Pin	4	--	--	N
Q	Outboard Seal Housing Screw	8	M12 - 1.75	27 / (36.6)	H
R	Yoke Clamping Bolt	1	M16 - 2.0	190 / (258)	H
Sa	Top Plate Screw	3	M12 - 1.75	30 / (40)	M
T	Top Plate Standoff	3	M12 - 1.75	48 / (65)	H
Va	Sensor Cover Screw	6	10-32	--	--
Wa	Cable Cover Screw	6	6-32	--	--
Xa	Cylinder Mount Bolt	8	M12 - 1.75	75 / (100)	H
Xb	Cylinder Mount Dowel Pin	4	3/4 X 3 1/4	--	N
Z	Support Plate Bolts	6	M20-2.50	350 / (474)	H

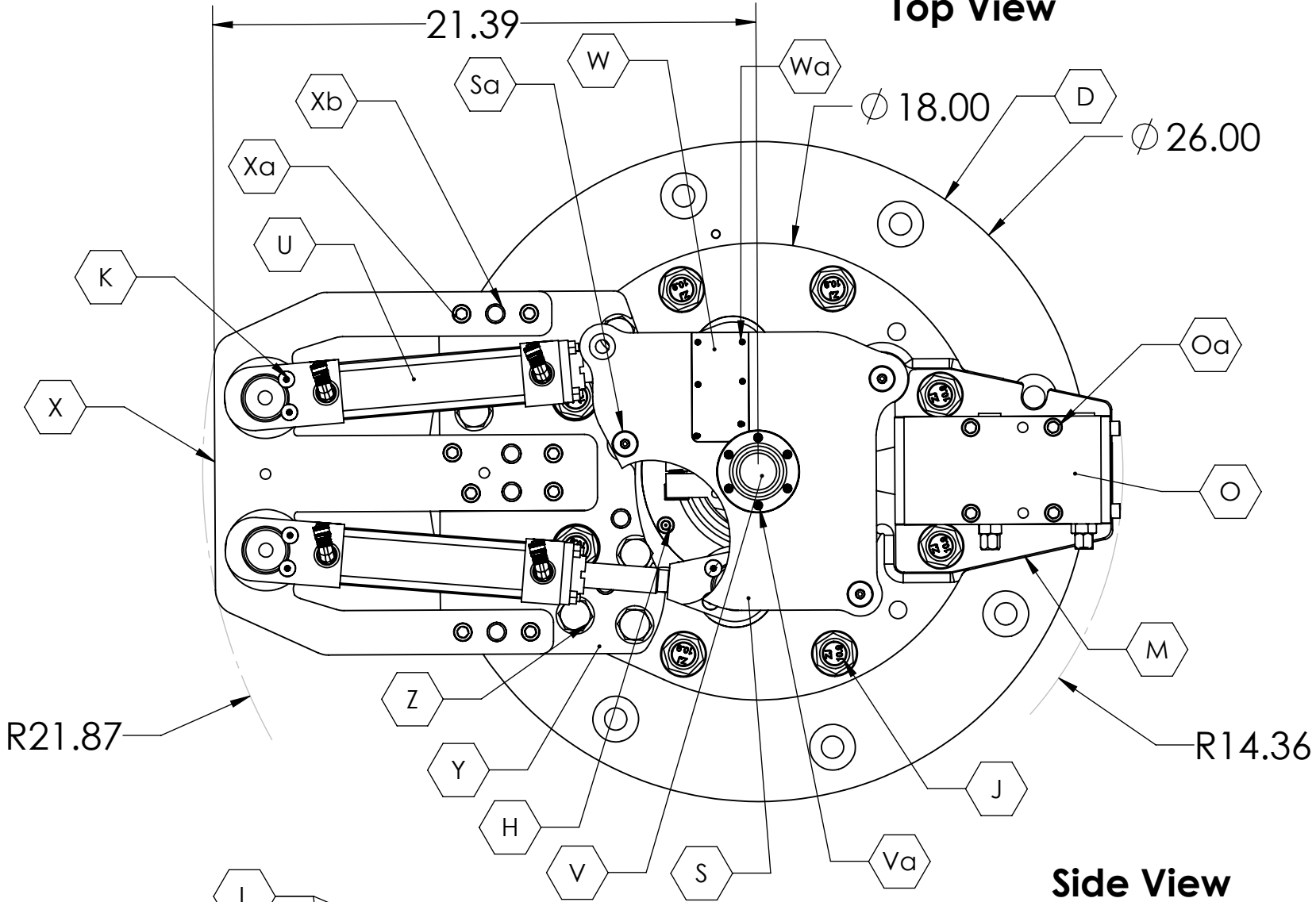
* Requires 1.375" Hex Socket

** M = Medium strength thread lock compount; H = High Strength thread lock compound. Installation torques shown here require coating on threads and also, as lubricant, under bolt head or nut, whichever is turned; N= Never Seez anti seize compound or equivalent.

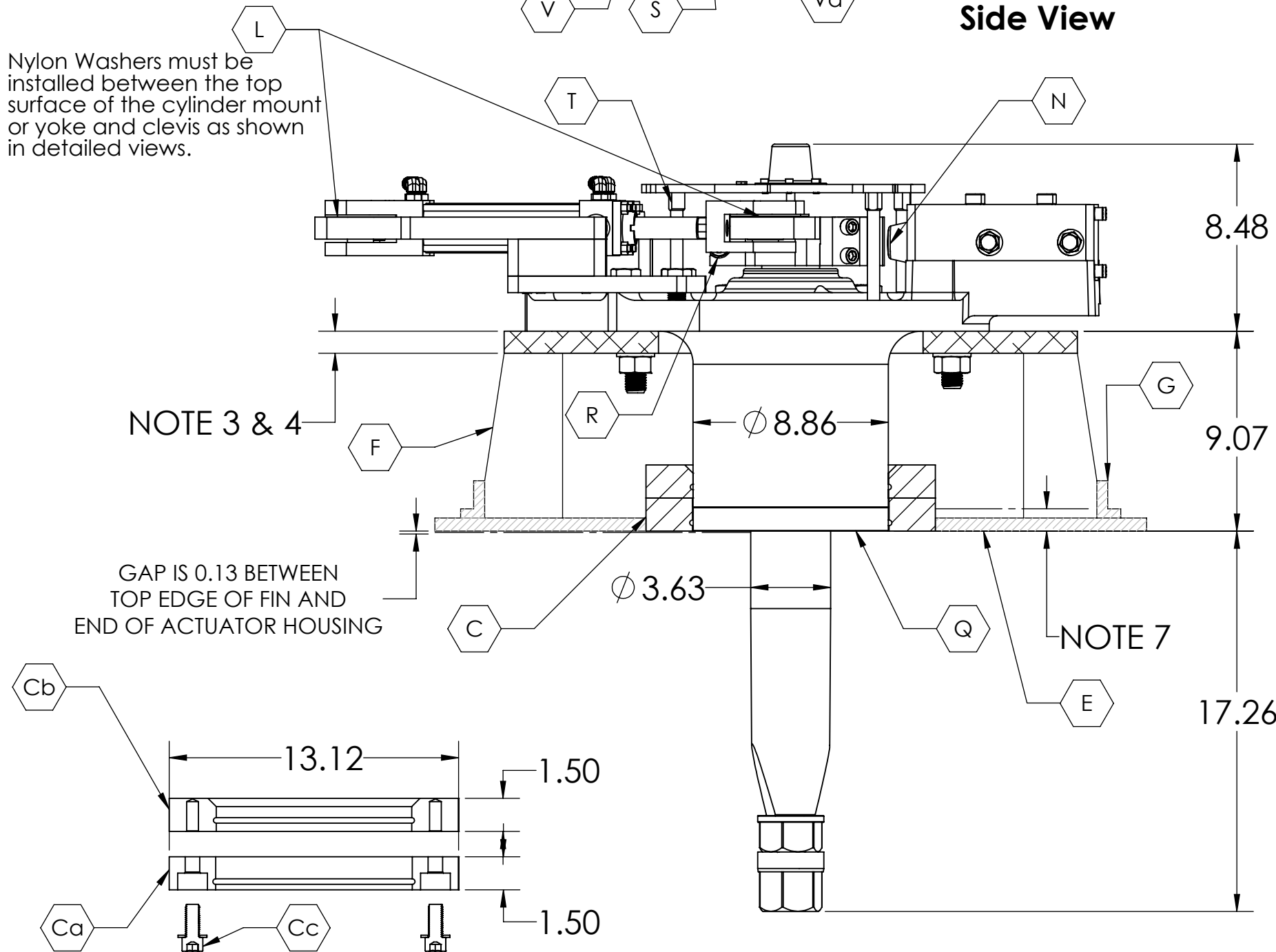
NOTES:

- It is the responsibility of the installer to determine what reinforcement measures should be taken to properly strengthen the hull for withstanding forces that may be encountered if the fin or the fin shaft strikes an immovable object while the vessel is under way. Recommendations made by American Bow Thruster are to be used as starting guidelines only. American Bow Thruster is NOT a naval architecture firm and is NOT qualified to advise on structural matters. American Bow Thruster strongly recommends that you seek the advice of a naval architect familiar with your make of vessel.
- See inset "Detail C" for Hull Flange Assembly details.
- The Platform Flange with its integrated gussets, hull framing and stringers, are provided by the customer according to the naval architect's specifications.
- Actuator Flange Bolts are provided by the customer according to the thickness of the platform flange. Fasteners should include grade 10.9 bolts with nuts and flat washers.
- Assembly fasteners illustrated and listed on this page should be installed with indicated coating applied to thrads and to head or nut sliding surfaces and torqued to values given.
- Install outboard plane of Weld-in Hull Insert to be flush with outside plane of hull at centerlines through flange. Install Actuator to have outboard end of Seal Housing flush with or slightly extending (0.00" / +0.125") from outboard plane of Weld-in Hull Insert.
- Acturator projects beyond Augmented Hull face 0.00" - 0.125" (0.00mm - 3.175mm).
- Actuator specifications and dimensions are subject to change without prior noitce. Do not use this print for final installation without contacting the factory for certified dinmensions.

Top View



Side View



ABT·TRAC

STABILIZERS · THRUSTERS · HYDRAULICS

517-A MARTIN AVENUE
ROHNERT PARK, CA 94928
(707).586.3155 Tel
(707).586.3159 Fax
<http://www.thrusters.com>

This drawing, design and all information contained hereinm is the exclusive property of Arcturus Marine. Reproduction in whole or in part without the consent of Arcturus Marine is expressly forbidden. All applicable copyright laws apply.

REVISED	
DRAWN	CB
CHECKED	CB
ISSUED	02/03/21

SPECIFICATION SHEET - ACTUATOR SIZE
370RMD-MH

Parts & Dimensions for Metal Hull Installation
All Dimensions are inches unless noted

PART# 49289

SHEET: 1 OF 1

REV: A