

# MARIJUANA PREVENTION EDUCATION SERIES 2020-2021

A series of virtual trainings and workshops providing comprehensive marijuana prevention education to youth, parents/families, adult allies, educators/school personnel, and healthcare/mental health professionals.



## Marijuana 101

Wed., Jan. 6, 2021 3:30pm-4:30pm  
Wed., Feb. 24, 2021 3:30pm-4:30pm

- \* Neuroscience & the developing adolescent brain
- \* Impact of use on brain functioning, academic performance, mental health & life outcomes
- \* Forms of use, potency & vaping

Meets National Health Education Standards 1, 2, 3 & 5

Intended Audience: Middle/high school/college students; parents/families; adult allies; educators; and healthcare/mental health professionals



## Marijuana & Your School Community

Wed., Apr. 14, 2021 4:00pm-5:30pm

- \* Forms of use, potency & vaping
- \* Impact on developing adolescent brain, academic performance, mental health & life outcomes
- \* Best practice strategies for supporting students

Intended Audience: Mental health providers; educators; school personnel/administrators; social workers



## Marijuana: What Teens Really Want to Know

Wed., Mar. 10, 2021 3:30pm-4:30pm  
Wed., Apr. 21, 2021 3:30pm-4:30pm

- \* Forms of use, potency, vaping
- \* Impact on adolescent brain development
- \* Answers to common questions posed by teens
- \* How to make sense of information on social media

Meets National Health Education Standards 1, 2, 3, 4, 5, 7 & 8

Intended Audience: Middle/high school/college students

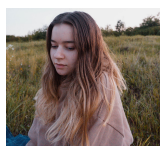


## Marijuana & Your Teen

Tues., Dec. 15, 2020 6:00pm-7:30pm  
Thurs., Jan. 28, 2021 6:00pm-7:30pm  
Wed., May 12, 2021 3:30pm-5:00pm

- \* Forms of use, potency, vaping
- \* Impacts on adolescent brain development, brain functioning, mental health & life outcomes
- \* Strategies for prevention conversations at home at various developmental stages

Intended Audience: Parents/families; adult allies; providers who would like to learn more about how to guide and support families



## Marijuana & Mental Health

Wed., April 14, 2021 8:30am-10:30am

- \* Forms of use, potency, vaping
- \* Impacts of use throughout lifespan focus on adolescent mental health, brain development, mood disorders, psychosis, & geriatric mental health
- \* How best to support clients
- \* Resources for continued learning and support

Intended Audience: Mental health providers; educators; school personnel/administrators; social workers. CEU's may be available.

## Presenters

Drs. Sarah Cunningham & Dr. Richard Von Feldt  
from Panaptic.com

Please use the link below to register and to  
receive the Zoom link:

[http://events.constantcontact.com/register/event?  
llr=awod9fdab&oeidk=a07ehewefn565e99fb7](http://events.constantcontact.com/register/event?llr=awod9fdab&oeidk=a07ehewefn565e99fb7)

**Las presentaciones educativas sobre la prevención de la marihuana en español estarán listas para finales de la primavera del 2021. Ya tenemos materiales en español disponibles.**

For more information o para más información en español,  
contact/contactémos:

donna.newman-fields@sonoma-county.org  
carla.denner@sonoma-county.org