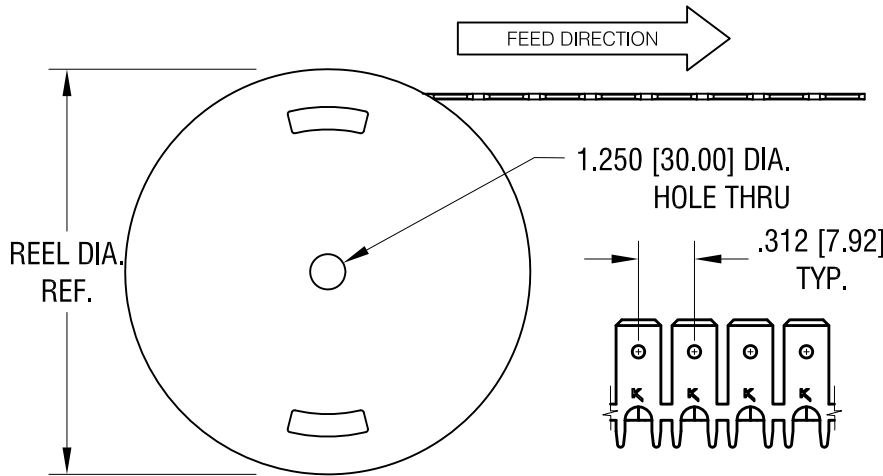
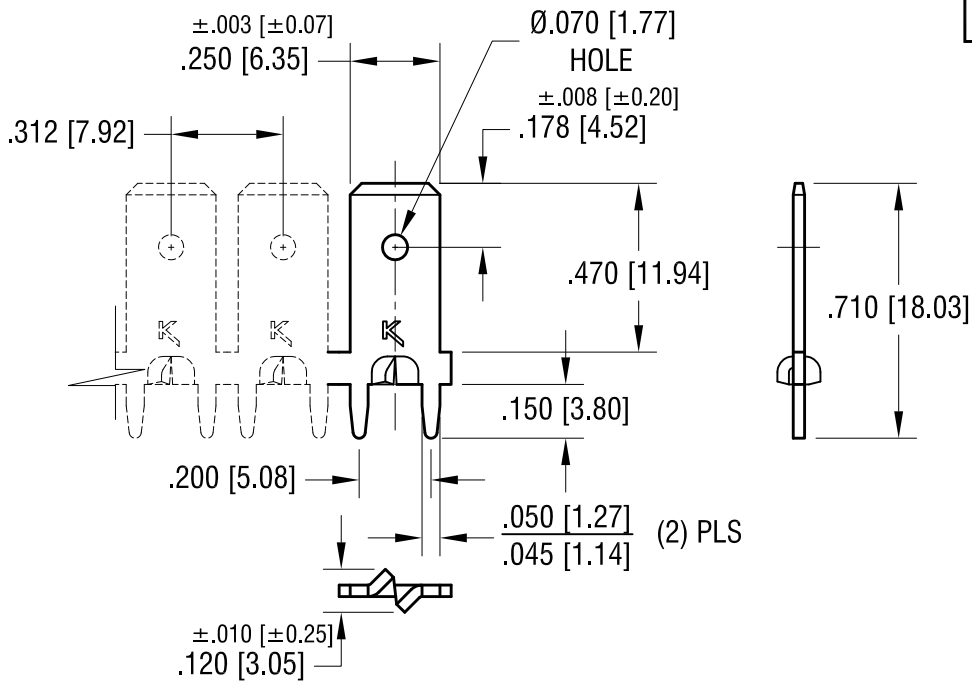


THIS DOCUMENT IS THE PROPERTY OF KEYSTONE ELECTRONICS CORP. AND SHALL NOT BE REPRODUCED, DISTRIBUTED OR USED AS A BASIS FOR MANUFACTURE WITHOUT PRIOR WRITTEN PERMISSION FROM KEYSTONE ELECTRONICS CORP.



**NOTES:**

**REEL SPECIFICATIONS:**

- 1. REEL: MAT'L- CARDBOARD  
24.0 [309.2] DIA. 15,000 PIECES PER CONTINUOUS REEL.

**TERMINAL SPECIFICATIONS:**

- 1. MAT'L- .032 [0.81] BRASS
- 2. FINISH: MATTE TIN PLATE.

<b>KEYSTONE ELECTRONICS CORP.</b>			
www.keyelco.com • NEW HYDE PARK, NY 11040 • Tel (516) 328-7500			
PART NAME			
PC QUICK TERMINAL ON CONTINUOUS REEL			
MATERIAL			
AS NOTED			
FINISH		DRN BY	DATE
AS NOTED		NT	9.17.18
		APP'D	SCALE
		LN	2X, 1X
TOLERANCES	INCH [MM]	CODE	DWG NO.
DECIMAL	± .005 [± 0.13]	C	<b>1289-STR</b>
ANGULAR	± 1°		
UNLESS OTHERWISE SPECIFIED			

DATE	DESCRIPTION	REV.	
------	-------------	------	--