

# How to use the CP State Advocacy Tool

[www.cpstate.org/advocacy](http://www.cpstate.org/advocacy)

Powered by:



Support, questions: [wdevoe@cpstate.org](mailto:wdevoe@cpstate.org)

## Step 1:

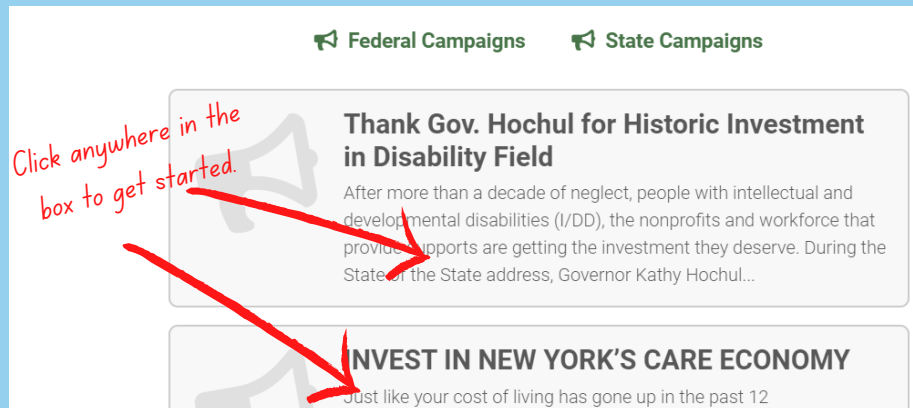
Go to [www.cpstate.org](http://www.cpstate.org) and click on Advocacy at the top of the page, or go to [www.cpstate.org/advocacy](http://www.cpstate.org/advocacy) directly.



## Step 2:

Choose the campaign you'd like to support and click on the call-to-action box.

You can sort by state and federal campaigns at the top.



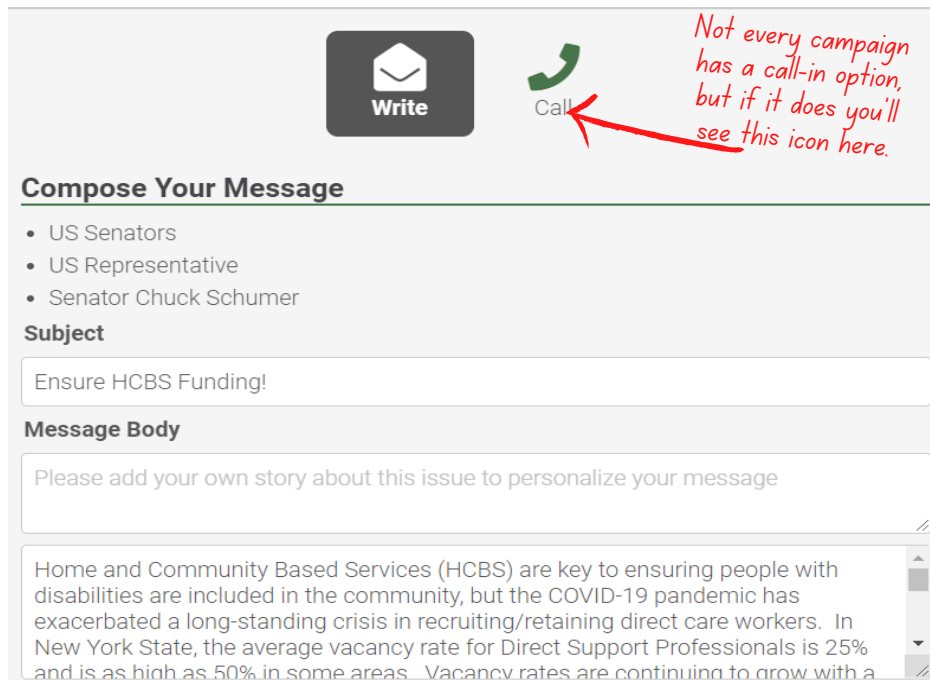
## Step 3:

On the campaign page, you'll see some background information on the issue.

Further down the page, you'll see a list of targets (elected officials, agency and division heads, media) and a draft message.

This message can be sent as-written or personalized.


If the campaign has a call-in component, you will also see a phone icon. Click on this icon for a draft phone script.



## Step 4:

Now it's time to enter your information. After you enter your home address, Voter Voice will automatically match you with your state and local representatives, and local media outlets if we have assigned them as targets.

In this menu you can also opt into text or email alerts from CP State.

Home Information **Address Okay** 

123 Your Address Rd.

Anywhere NY 12054

☒ Send me email alerts  
☒ Remember me

**Send Message**

*Pro tip: Click "Remember Me" at the bottom of the form to avoid having to fill it out every time you want to advocate.*

## About your info...

### What we do with your information:

- Automatically connect you with your elected representatives to make advocacy a snap.
- Invite you to advocate when we launch a new campaign.

### What we don't do with your info:

- Share it with anyone else.
- Solicit for issues other than those for which CP State is advocating.

**We take your security very seriously and wouldn't do anything to jeopardize your willingness to be an advocate for people with disabilities!**




## Step 5:

Now it's time to send that message!

Click the big "Send Message."

You will receive a confirmation with the names of the targets you have contacted.

You can now go back to the Advocacy page and take part in our other campaigns. Advocates are able to send messages to contacts once every 24 hours, so come back often!

Home Information **Address Okay** 

123 Your Address Rd.

Anywhere NY 12054

☒ Send me email alerts  
☒ Remember me

**Send Message**

### Confirmation

Thank you for supporting our effort. We appreciate your interest and hope that you will consider helping us again in the future.

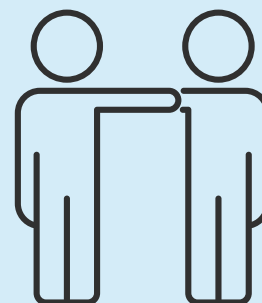
You have communicated with the following:

- Governor Kathy Hochul (email)
- Senator Michelle Hinchey (email)
- Assemblywoman Patricia Fahy (email)

## Step 6 (optional):

Pat yourself on the back.

You have just joined a growing network of more than 15,000 advocates that have used CP State's online tool to better the lives of people with disabilities!



We're here to help! Email [wdevoe@cpstate.org](mailto:wdevoe@cpstate.org) for any questions about the online advocacy tool.