

TRAUMA 103

RECOGNIZING VICARIOUS & SECONDARY TRAUMA FOR PROFESSIONALS



The emotional and physical cost of being an engaged and empathetic caregiver can be an occupational hazard. Considering the potential impact of vicarious and secondary trauma, compassion fatigue, and burn-out, caregivers are provided with critical steps in identifying signs and symptoms of each.

Additionally, practical skills and a commitment to self-care are an integral part of this interactive workshop.



Thursday, November 13



10:00am-12:00pm

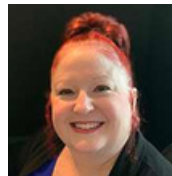


Zoom

REGISTER NOW



CEU Eligible



Melissa Groden

Human Services Practitioner
The Council of Southeast
Pennsylvania, Inc

Melissa Groden is a Human Service Professional with 29 years of experience in the field. She is also a Certified Family Recovery Specialist, Adjunct Trainer for Lakeside Global Institute, and a Certified Trainer in the Pennsylvania Student Assistance Program and Youth Mental Health First Aid. She holds a master's degree in administration of human services from Chestnut Hill College with a bachelor's degree in psychology, and a minor in criminal justice, from Temple University.



Deborah Harris

Geriatric Counselor
Family Services of Montgomery
County

Deborah Harris has been in the social services field for twenty-five years. She is a Licensed Clinical Social Worker and in her current position she is a Geriatric Counselor with Family Services of Montgomery County. Prior to this she has worked in the areas of substance abuse treatment for teens, community mental health, and in a college student counseling center. She has also been involved in research on childcare quality, AmeriCorps Vista, and Adult Literacy.



Montgomery County is committed to providing access, equal opportunity and reasonable accommodation in its services, programs, and employment. To receive accommodation for this Zoom event, complete our [request form](#) at least 5 days prior to the event. Contact Donna L. Richemond with questions: 610-278-1499 or email at

donna.richemond@montgomerycountypa.gov