



GENERAL MEMBERSHIP MEETING
JANUARY 16 2025





Agenda

1. Welcome
2. Opening Remarks - Dr. Tamra Williams, Montgomery County Deputy COO
3. Review of Community Agreements
4. Small Group Networking
5. Food Policy Council Overview
6. Update on Potential Council Priorities
7. Partner Highlights – The Best Route and Tomorrow’s Homestead
8. Announcements and Wrap Up



Community Agreements

- Be respectful of everyone's time and follow the agenda
- Be curious
- Acknowledge and value diverse perspectives and experiences
- Recognize that we all learn and process information in different ways
- Challenge ideas not the person
- Avoid acronyms and industry language
- One speaker at a time
- Step up, step back
- Practice active listening
- Follow through on commitments made to the group



Food Policy Council Overview

1. What is a Food Policy Council?
2. Montgomery County Food Policy Council
3. Role of General Members
4. Next Steps

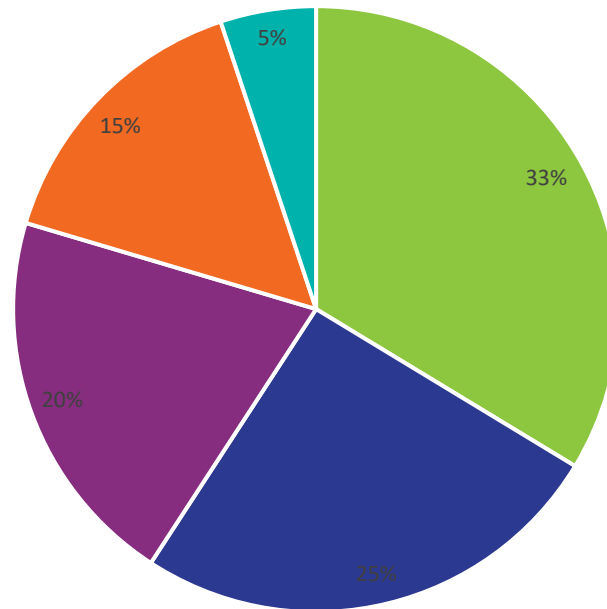


Background on Food Policy Councils

➤ 301 FPCs in the USA

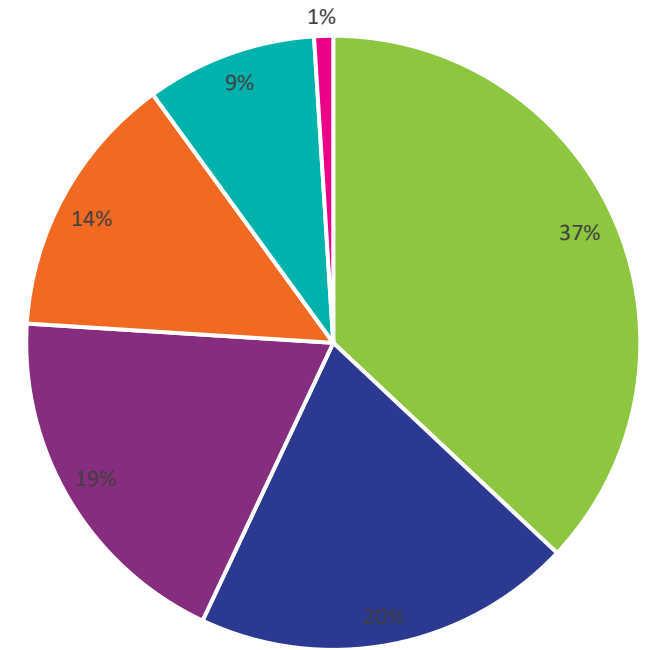
FPCs by Entity

- Housed in a Non-profit
- Embedded in Local Government
- Grassroots Coalition
- Non-profit
- Embedded in University



FPCs by Geography

- County
- Regional
- City and County
- City
- State
- Tribal



Food Policy Council Impact

- ❖ Johnson County, Kansas – Partnered with Transit Department to secure a grant for transit access vouchers for people facing transportation and food access barriers
- ❖ Louisville, Kentucky – Created a community land access micro-grant program and guide to help people purchase vacant lots to grow food
- ❖ Colorado – Issued six policy briefs, leading to three new state bills and over \$29 million in new state food and agriculture spending





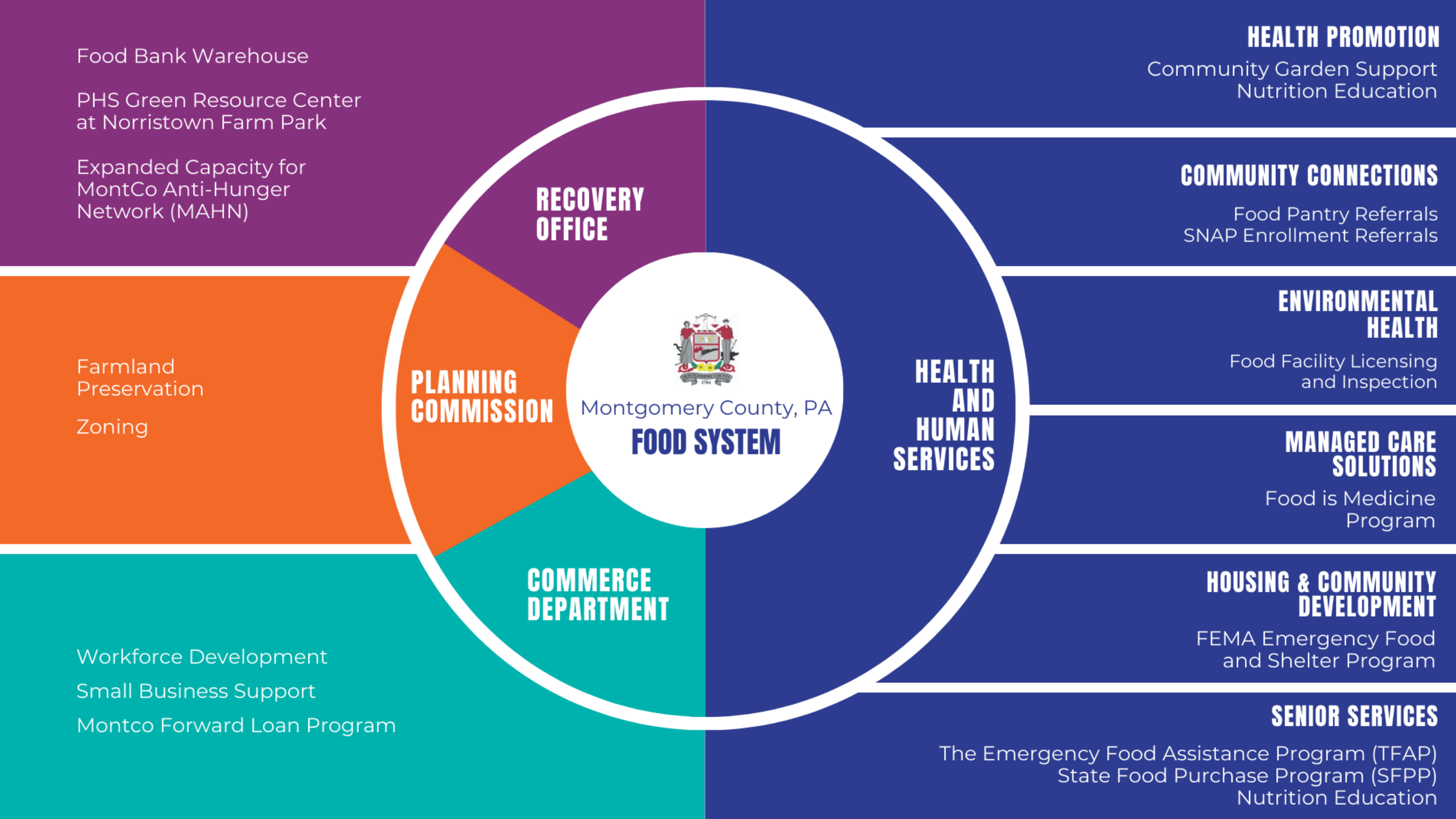
Background on MCFPC

Ongoing
County
Programming

Eat Local
Montco
Report (2018)

ARPA

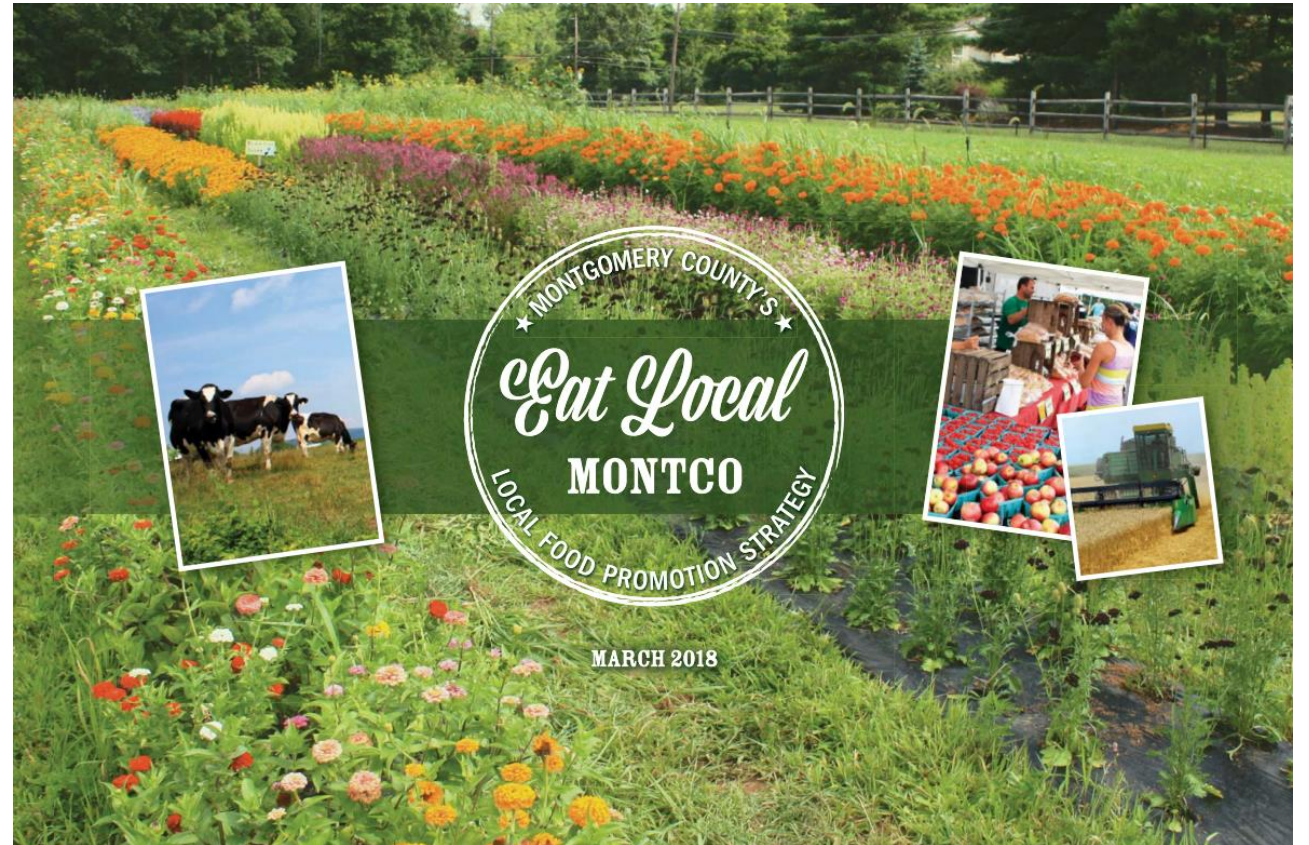
Montgomery
County Food
Policy Council





Eat Local Montco

- Report developed by the Delaware Valley Regional Planning Commission (at Montgomery County's request)
- Focused on promoting local food
- Conducted interviews, focus groups, and surveys
- Recommended establishing a County Food Policy Council





ARPA Food Systems Investments

21 projects requesting
\$74,349,467 submitted

8 projects totaling
\$8,394,054 approved

\$1,070,154 for the
Food Policy Council



Includes \$4 million to renovate
a warehouse in Lansdale to
operate as a food bank



Food Policy Council Objective

Create a more equitable and sustainable Montgomery County Food System

Goal 1

- Increase coordination of County services and resources

Goal 2

- Improve communication among food system stakeholders

Goal 3

- Identify and achieve collective goals

Montgomery County Food Policy Council

Leadership Team

Strategic guidance and direction
for Council development

Working Groups

Issue specific research and
recommendations

General Members

Information and resource sharing



Leadership Team

Completed:

- Created Community Agreements
- Approved By-laws
- Established organizational processes
- Elected Executive Committee
- Planned first general membership meeting
- Started prioritization process

To Do:

- Identify priority projects
- Establish Working Groups
- Issue RFP



General Members

- Attend quarterly general membership meetings
- Subscribe to Food Policy Council newsletter
- Participate in council events, surveys, and other activities
- Contribute ideas and information to the Council
- Open to everyone



Questions?

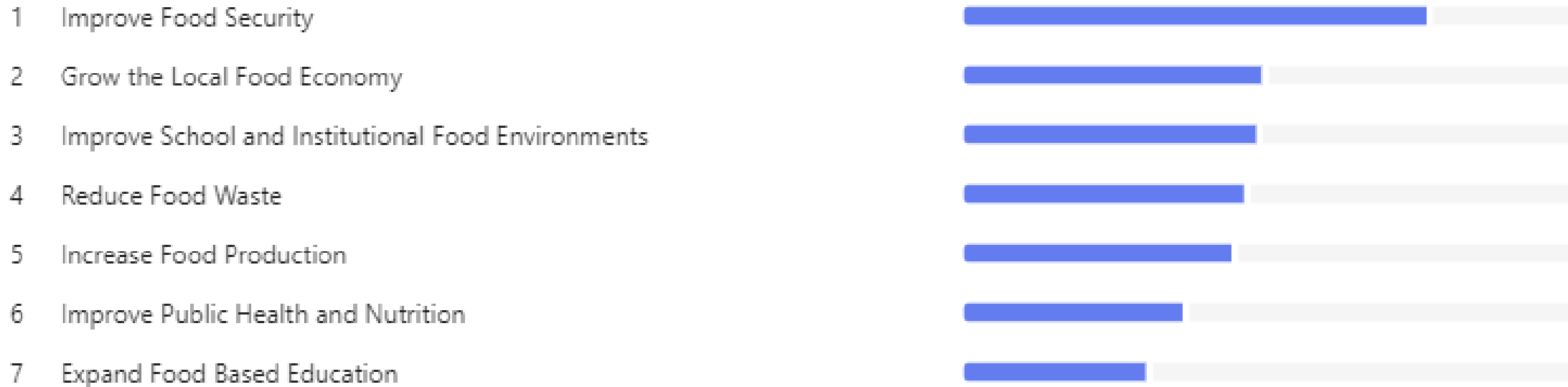


Prioritization Process



1. Please prioritize the following goals for the first year of the Montgomery County Food Policy Council

[More details](#)

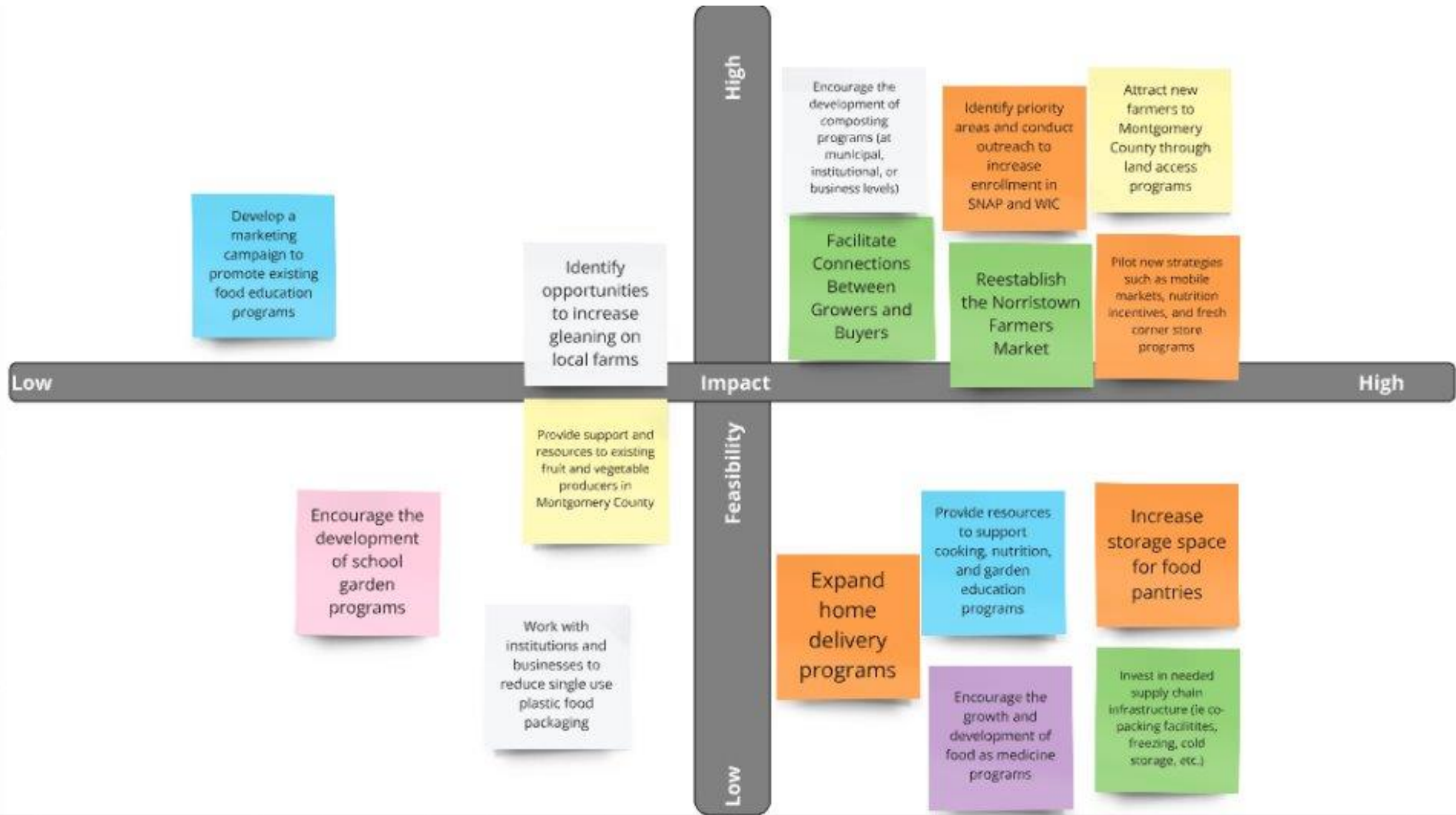


What is unique about the Food Policy Council is the ability to bring people together across different sectors of the food system



Network Development Working Group

- Bring people together from across the food system
- Host events, workshops, etc.
- Facilitate new and unique partnerships



What can the County (and the Council) do?

Ranking	Fund	Convene/Connect/Communicate	Use Existing County Resources
High Impact High Feasibility	<ul style="list-style-type: none"> Pilot new strategies such as mobile markets, nutrition incentives, and fresh corner store programs Increase storage space for food pantries 	<ul style="list-style-type: none"> Identify priority areas and conduct outreach to increase enrollment in SNAP and WIC Facilitate Connections Between Growers and Buyers 	
High Impact Low Feasibility	<ul style="list-style-type: none"> Expand home delivery programs 	<ul style="list-style-type: none"> Encourage the development of composting programs (at municipal, institutional, or business levels) 	
Low Impact High Feasibility		<ul style="list-style-type: none"> Develop a marketing campaign to promote existing food education programs Identify opportunities to increase gleaning on local farms 	
Low Impact Low Feasibility	<ul style="list-style-type: none"> Encourage the development of school garden programs 	<ul style="list-style-type: none"> Work with institutions and businesses to reduce single use plastic food packaging 	
Uncategorized	<ul style="list-style-type: none"> Install a garden/farm at the new Montco Share Warehouse Provide resources to support cooking, nutrition, and garden education programs Provide support and resources to existing fruit and vegetable producers in Montgomery County Invest in needed supply chain infrastructure (ie co-packing facilities, freezing, cold storage, etc.) Encourage the growth and development of food as medicine programs Attract new farmers to Montgomery County through land access programs 	<ul style="list-style-type: none"> Connect Farmers to schools, starting with NASD Develop a strong farmers market program Reestablish the Norristown Farmers Market 	<ul style="list-style-type: none"> Use the voting truck for food distributions Create a demonstration farm on County property Create County procurement and/or food waste policies



Projects Under Consideration

1. Increase benefits enrollment
2. Establish County demonstration farm
3. Facilitate farm to school connections



Next Steps



RFP will likely focus on collaborative projects that make connections across the food system



Potential Network Development Working Group



Identify 1 – 2 projects for the Council to advance

Montgomery County Food Policy
Council - General Membership
Meeting Feedback

