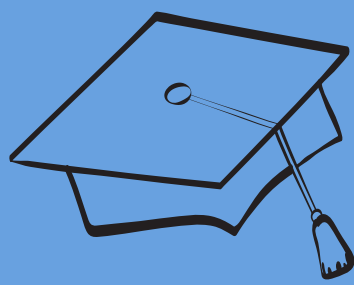


SUMMARY OF PERFORMANCE (SOP)



The Roadmap to Meeting Post-Secondary Goals for Students with IEPs

IDEA REQUIRES THAT AN SOP INCLUDES

STUDENT INFORMATION

When a student with an IEP graduates with a diploma or ages out, an SOP must be provided that includes contact and general information about academics and functional performance. It should contain assessment results, contact information for adult support agencies, and any other documentation that may be helpful for the student after graduation.



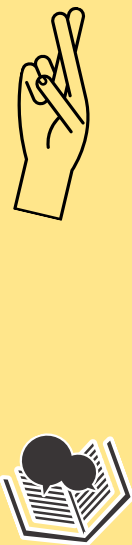
ASSESSMENT REPORTS USED AS A BASIS FOR THE SUMMARY

Psychological/cognitive
Behavior
Neuropsychological
Language

Social/emotional
Classroom observations
Community-based
Assistive Technology

Academic/Achievement
Career/ Vocational

WHAT SERVICES DID THE STUDENTS RECEIVE IN HIGH SCHOOL?



Special Education
Health Services
OT, PT, Speech, Language
Assistive/Adaptive Technology
Interpreter
Orientation & Mobility
Counseling/Social Work
Others



INFORMATION ON HOW THE STUDENT CAN REACH SPECIFIC POST SECONDARY GOALS



EDUCATION/TRAINING
EMPLOYMENT
INDEPENDENT LIVING

FIND OUT MORE ABOUT THE SUMMARY OF PERFORMANCE

Missouri Sample Form: <https://dese.mo.gov/sites/default/files/SOP%207-2015.doc>