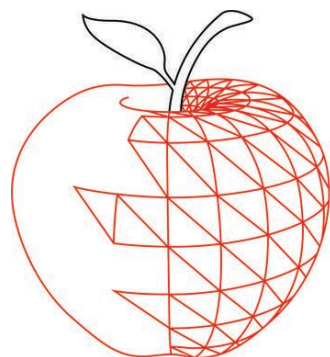


FALL 2021



GREATER CAPITAL REGION
**TEACHER
CENTER**
FOR EFFECTIVE TEACHING

CORE CONNECTION

Contact Information **2**

DASA Certification Training **35**

English Language Arts **12**

Mathematics **32**

Mentoring **3**

Professional Strategies **5**

Resilient Schools **28**

Science **20**

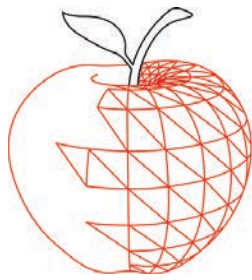
Special Education **22**

Technology **19**

Visual and Performing Arts **16**

World Language **34**

FOR TEACHERS, BY TEACHERS



GREATER CAPITAL REGION TEACHER CENTER FOR EFFECTIVE TEACHING

POLICY BOARD

Dr. Sherry Guice Co-Chair & Teacher, South Colonie CSD
Kate Gurley Co-Chair & Administrator, Burnt Hills-Ballston Lake CSD
Kerry Babson Teacher, Hartford CSD
Tim Backus Assistant Superintendent, South Colonie CSD
Dr. Robert Bangert-Drowns Education Department Faculty, University at Albany
Sandie Carner-Shafran Retired Teaching Assistant, WSWHE BOCES
Emily Ciuk Teacher, Troy City SD
Christopher DeConno Teacher, Greater Johnstown SD
Karen Fox Director, Education Initiatives, Capital Region Chamber
Melissa Gergen Teacher, Guilderland CSD
Maryanne Harper Teacher Emerita, The Albany Academies
Glenn Jeffers Parent Representative, Bethlehem CSD
Kathleen Maguire Teacher, Hadley-Luzerne CSD
Anthony McCann Retired Teacher, Shenendehowa CSD
Terri McGraw Administrator, Roman Catholic Diocese of Albany
Susan Moore-Palumbo Teacher, South Glens Falls CSD
Kim Pusatere Teacher, Ballston Spa CSD
Kristine Raskopf Retired Teacher, Greenville CSD
Jessica Short Teacher, City School District of Albany
Dalisa Soto-Peruzzi Teacher, Greater Amsterdam SD

FACULTY & STAFF

Valerie Lovelace Executive Director, valerie@teachers-center.org
Shannon Woodle Public Information Specialist, shannon@teachers-center.org
Geoff Bizan Teacher Leadership Coach for Technology Integration
geoff@teachers-center.org
Liz Daley Teacher Leadership Coach for Special Education, liz@teachers-center.org
David Fields Teacher Leadership Coach for HS Mathematics
dave@teachers-center.org
Lorena Hurst Teacher Leadership Coach for Elementary Education
lorena@teachers-center.org
Kate Jarrard Teacher Leadership Coach for Visual & Performing Arts
kate@teachers-center.org
Mary Ann Nickloy Teacher Leadership Coach for MS Mathematics
maryann@teachers-center.org
James St.Denis Teacher Leadership Coach for Science, james@teacher-center.org

REGISTRATION

Participants should register online at <https://tinyurl.com/ujetwhfn>. Registration is on a first come, first served basis for Greater Capital Region Teacher Center constituents. If space is available after all GCRTC constituents are served, other educators are welcome to attend. As a professional courtesy, if you are unable to attend an event for which you have registered, please "drop" the program in Frontline as soon as possible. This will allow another educator on the waitlist to participate.

PARTICIPATION

DOCUMENTATION

Many school districts require that prior approval for salary credit be obtained as per the local collective bargaining agreement. Please verify requirements with your own school system or local teacher union. Graduate credit is awarded by Greater Capital Region Teacher Center's higher education partners. For in-service activities, certificates will be provided in accordance with the new CTLE requirements. GCRTC is an approved NYSED CTLE sponsor. For more info: <https://tinyurl.com/y2yds5fg>.

A NOTE ON COVID-19

Safety is our top priority. All Greater Capital Region Teacher Center programs will continue to be offered in full compliance with current CDC, State Health Department, and NYS Education Department guidance for the continued safety of our participating educators, staff and non-faculty instructors. Participating educators will be notified of any format changes to a registered course as soon as possible. Your continued understanding is appreciated.

MENTORING

NEW MENTOR TRAINING - FULLY ASYNCHRONOUS ONLINE!

“Mentor-mentee partnerships help beginning teachers to acclimate themselves to a new environment by shattering the walls of isolation that they often experience at the outset of their careers and, as a direct result, raise student outcomes by expanding pedagogical and interactive social skills”.

- The State Education Department/ The University of the State of New York New York State Mentoring Standards

Self-paced and supported by a cross-curricular team of instructional coaches, this course guides veteran teachers through the analysis of the knowledge and attributes critical to teacher mentoring. Participating educators will practice primary mentor actions including listening, observing, monitoring and coaching while continually reflecting on their own growth as measured by the NYSED standards for mentoring. By the end of the 15 hour experience, teachers will be equipped with tools and strategies to support the growth, development and retention of new teachers. Participating educators have up until the end of the month to complete the course & attendance will be marked complete when activities are complete.

DETAILS

Format: Online - Asynchronous

Dates: 10/1-10/31 * Work at your own pace *

Facilitators: Geoff Bizan, Liz Daley, Lorena Hurst, Mary Ann Nickloy, & Valerie Lovelace, GCRTC Faculty

Contact: valerie@teachers-center.org

Fee: None. Registration is required.

CTLE hours: 15

Registration: <https://tinyurl.com/spsvb9c>

NOTE

Enroll anytime during the month



MENTORING

MENTORS AND MENTEES: QUALITY TIME TOGETHER

Organizing a classroom, developing effective classroom management strategies, assessing individual student needs and planning & implementing curriculum are complex and challenging tasks. Managing a full course load, juggling several course preparations, providing restorative practices (etc.) can overwhelm beginning teachers, who frequently have limited experience - often because of the 2020 Covid-19 impact. Learning-centered mentors have a wealth of instructional and classroom practice that support the growth of these educators.

Research indicates that minimally, forty-five to sixty contiguous minutes are essential for meaningful learning and reflection for strengthening teaching performance (Jensen, E). The capacity of mentor teachers to help new teachers move from theory to practice will be enhanced by this collaborative professional learning opportunity. This program will provide time for mentors and beginning teachers to identify common issues of practice. Time will be provided for each new teacher mentor pair (or triads) to: discuss, plan, problem solve, and reflect on these and other topics. Additionally, opportunities to carve out quality time monthly to target classroom visitation & feedback, refining instructional practices, and listen to and cognitively coach perceived needs of our newest colleagues will be discussed.

Mentor/Mentees pairings will meet monthly to meet district mentor program requirements and to have quality time to meet the normal developmental needs of beginning teachers.

Topics for facilitated professional discourse might include:

- Classroom management
- Motivating students
- Understanding the diverse needs of students
- Unit/Lesson Planning
- Differentiated instruction and alternative assessment
- Building parent relationships: back to school night, parent conferences
- Time and workload management
- Reflective practice.

DETAILS

Format: Online - Synchronous

Dates: 9/23, 10/21, 11/18, 12/16, 1/20, 2/17, 3/3, 3/31, 4/28

Time: 3:45 p.m. - 5:45 p.m.

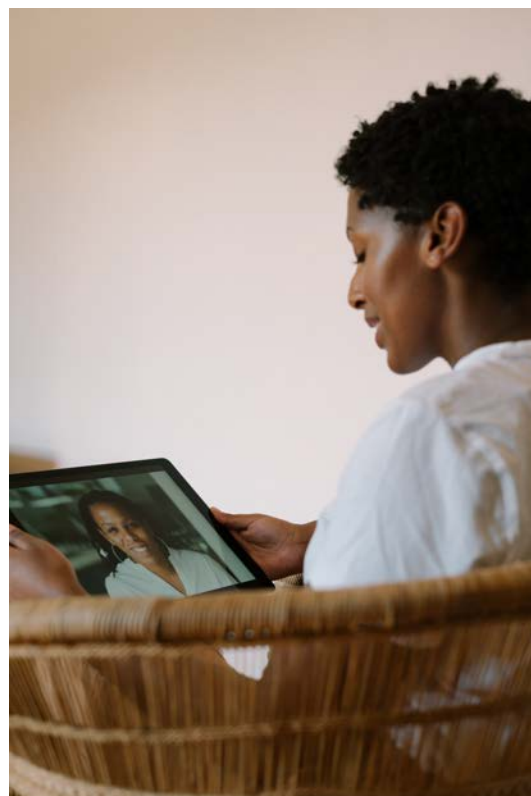
Facilitator: Alexia Ryan

Contact: valerie@teachers-center.org

Fee: None. Registration is required.

CTLE hours: 15

Registration: <https://tinyurl.com/yd5825fy>



PROFESSIONAL STRATEGIES

ENHANCING YOUR CURRICULUM WITH PRIMARY SOURCES

INTRO TO ENHANCING YOUR CURRICULUM WITH PRIMARY SOURCES

As teachers, we are constantly working to create and improve our lessons, but often overlook the power of primary sources. Primary sources are the raw materials of history - original documents and objects which were created at the time under study. Using these in your curriculum gives students a stronger sense of history and the complexity of the past, along with humanizing historical figures and creating relevant connections. This 3-hour introductory conversation is designed to support teachers in creating units and lessons relevant to their subject area, primarily using the Library of Congress as our resource.

DETAILS

Format: Online - Synchronous | **Date:** 9/16 | **Time:** 4:00 p.m. - 7:00 p.m.

Facilitator: Kate Jarrard, GCRTC Teacher Leadership Coach for the Visual and Performing Arts

Contact: kate@teachers-center.org | **Fee:** None. Registration is required.

CTLE hours: 3 | **Registration:** <https://tinyurl.com/ca3jd4fj>

ENHANCING YOUR CURRICULUM WITH PRIMARY SOURCES - PART 1: DESIGN

As a follow-up to our *Intro to Enhancing Your Curriculum with Primary Sources* program, teachers in this session will work independently or collaboratively to develop units of lessons that use primary sources to engage students in authentic and deep learning opportunities. Participating educators will develop units relevant to their subject area. All units will be shared in an online library, which can be shared with member schools. Participants that have previously participated in this course are welcome to join again!

DETAILS

Format: Online - Synchronous & Asynchronous

Dates: Synchronous Online: 9/23, 10/14; Asynchronous Online: 9/23-11/4 | **Time:** 4:00 p.m - 5:00 p.m.

Facilitator: Kate Jarrard, GCRTC Teacher Leadership Coach for the Visual and Performing Arts

Contact: kate@teachers-center.org | **Fee:** None. Registration is required.

CTLE hours: 15 | **Registration:** <https://tinyurl.com/346vp4mz>

ENHANCING YOUR CURRICULUM WITH PRIMARY SOURCES - PART 2: IMPLEMENT & REFINE

Participating educators from the Part 1 program (Design) will implement the unit they created using primary sources. Using assessment and reflection, they will work collaboratively to troubleshoot and gather more ideas, in order to refine their lesson plans for future implementation.

DETAILS

Format: Online - Synchronous & Asynchronous

Dates: Synchronous Online: 11/17, 12/8, 12/22; Asynchronous Online: 11/17-12/22

Time: 4:00 p.m - 5:00 p.m. | **Contact:** kate@teachers-center.org | **Fee:** None. Registration is required.

Facilitator: Kate Jarrard, GCRTC Teacher Leadership Coach for the Visual and Performing Arts

CTLE hours: 15 | **Registration:** <https://tinyurl.com/5674ba2f>

NOTE

All participating educators must have taken Part 1 (Design) before taking Part 2 (Implement & Refine).

PROFESSIONAL STRATEGIES

TOOLS DISCOVERED DURING REMOTE LEARNING... SUITED TO ADDRESS LEARNING GAPS CAUSED BY REMOTE LEARNING

Teachers pivoted instantly & heroically found methods to adapt to the challenges caused by COVID-19 and the interruptions it caused. Although we rose to the occasion, it wasn't without learning gaps. This course will address the tools that worked and still can work; the tools that worked during the past school year, but now may not; and discuss methods that can bridge between the changes we have been faced with and the changes that are still to come. We will review and explore pedagogy and technology that was discovered during the pandemic and also survived the past two years, in order to adapt to the current learning environment.



formative



DETAILS

Format: Online - Asynchronous

Dates: 9/27-11/22

Facilitators: Dave Fields, Geoff Bizan, Mary Ann Nickloy, & Kate Jarrard, GCRTC Teacher Leadership Coaches

Contact: dave@teachers-center.org

Fee: None. Registration is required.

CTLE hours: 15

Registration: <https://tinyurl.com/y5a43wtx>

OUR STORY BRIDGE: CONNECTING THE PAST AND THE PRESENT

Learn how a rural New York library developed an online audio local history project to share the past and present of their town, then created free resources for libraries, historical societies, archives, and other organizations to build community using their model!

Focus will be on the Teacher's Guide, used by schools and libraries to select stories from existing story projects for their school courses and library programs. By using the stories, you can engage younger generations in the hope that they learn about their community and become proud citizens. This presentation will also introduce free resources to walk you through the process of planning, implementing, and sustaining your unique story project.



DETAILS

Format: Online - Synchronous

Date: 10/27

Time: 4:30 p.m. - 6:00 p.m.

Facilitators: Jerry Huntley, MEd, MLS & Brad Hurlburt, Keene CSD

Contact: valerie@teachers-center.org

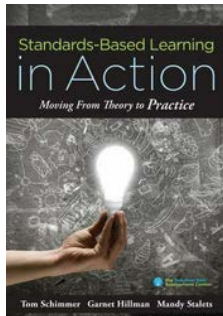
Fee: None. Registration is required.

CTLE hours: 1.5

Registration: <https://tinyurl.com/7etmnhwd>

PROFESSIONAL STRATEGIES

STANDARDS-BASED GRADING 2.0: RUBRICS AND ASSESSMENTS



Standards-based grading provides a clear and equitable way to assess student learning, focusing on student understanding of specific concepts and skills. This is especially relevant in light of the remote learning challenges of student equity, engagement, and assessment. This 8 hour course will begin to dive into the mechanics of standards-based grading by focusing on the importance of rubrics aligned to standards and how to use assessments to track student growth in a standard. We will begin by looking at standards and creating rubrics that can be used in the classroom to provide feedback to students on standard growth. We will wrap up by looking at assessments and how we can use rubrics to provide feedback to students on standard growth.

DETAILS

Format: Online - Synchronous

Dates: 10/7, 10/21, 11/4, 11/18, 12/2 | **Time:** 4:30 p.m. - 6:00 p.m.

Facilitators: Andrew Quell, NYS Master Teacher Emeritus & Ben Early, Science Teacher

Contact: CTLE/Registration: james@teachers-center.org; Course/Content: quelandr@shenschools.org

Fee: None. Registration is required. | **CTLE hours:** 8 | **Registration:** <https://tinyurl.com/y3jh5gum>

NOTE

While it is not a requirement for participation, the book *Standards-Based Learning in Action: Moving from Theory to Practice* will be used as the basis for much of the class and is a valuable resource.

ENGAGE EVERY FAMILY: PLC AND BOOK APPLICATION



Effectively engaging families in the learning process is a powerful way to improve student success. Even without the remote learning and the uncertainty of the past year, there are many challenges to creating effective partnerships between parents and teachers. In this 30 hour course, held completely online, participating educators will work together to discuss and develop strategies for improving two-way communication between school and home. We will use the book *Engage Every Family* as the framework for our discussions. The author outlines a pathway and process to engage every family using five simple principles. We will dive into the five principles and discuss how to apply them to our own practice to help improve the connections between the teacher, family, and student.

DETAILS

Format: Online - Asynchronous

Dates: 10/12-5/10

Facilitators: Geoff Bizan, Dave Fields, and James St. Denis, GCRTC Teacher Leadership Coaches

Contact: james@teachers-center.org | **Fee:** None. Registration is required.

CTLE hours: 30 | **Registration:** <https://tinyurl.com/bsmf65fk>

NOTE

Participating educators will need to obtain a copy of the book *Engage Every Family: Five Simple Principles Second Edition* by Steven Mark Constantino.

PROFESSIONAL STRATEGIES

EQUITY EDUCATION SERIES - SEE: BEGINNING THE CONVERSATION

"For more than a century, education providers throughout the United States have strived and struggled to meet the diverse needs of American children and families."

In response to the needs of teachers and the families we serve, this three course series aspires to help education professionals reform their learning contexts and change the narrative around race from the inside out. Designed using the Leading for Equity Framework created by the National Equity Project, the courses follow the sequence See - Engage - Act. Join us as we make sense of the systems within which we teach and learn and how to reimagine our role as change agents.

- ★ **See:** Beginning the Conversation - Fall 2021 (register below)
- ★ **Engage:** Working within Complex Community - Winter 2022 (registration available at a later date)
- ★ **Act:** Commitments to Equity - 2022 (registration available at a later date)

SEE: BEGINNING THE CONVERSATION

In this course, we will examine the core issues of systemic disparities in our society and schools. Participating educators will notice and name their own identities and ways of knowing, their students' individual and collective identities and histories, and conclude by discovering possibilities for their new learning to their respective learning spaces. Along the way, we will learn a lexicon for addressing racism and practice safe habits for engaging in discourse to unpack the groups take-aways, grapplings, and perspectives. Educators will participate in 1.5 hours of prerequisite online engagement in preparation for 1.5 hours of synchronous facilitated conversations each week.

DETAILS

Format: Online - Synchronous & Asynchronous

Dates: Asynchronous Online: 10/8-11/9; Synchronous Online: 10/13, 10/20, 10/27, 11/3, 11/10

Time: 4:00 p.m. - 5:30 p.m.

Facilitators: Liz Daley, Lorena Hurst, and Kate Jarrard, GCRTC Teacher Leadership Coaches

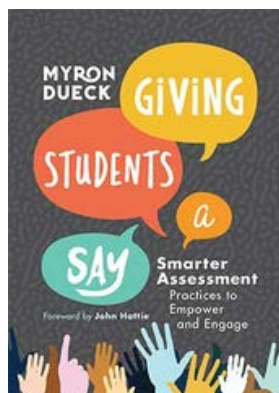
Contact: liz@teachers-center.org | **Fee:** None. Registration is required.

CTLE hours: 15 | **Registration:** <https://tinyurl.com/4ep2vtfm>



PROFESSIONAL STRATEGIES

GIVING STUDENTS A SAY - BOOK STUDY



This book study of *Giving Students a Say: Smarter Assessment Practices to Empower and Engage*, by Myron Dueck, is an opportunity for teachers to explore the central concepts and research-based strategies in a supportive collegial environment. Assessment is an essential part of teaching and learning, but too often it leads to misleading conclusions—sometimes with dire consequences for students. How can educators improve assessment practices so that the results are accurate, meaningful, informative, and fair? Educator and best-selling author Myron Dueck draws from his firsthand experience and his work with districts around the world to provide a simple but profound answer: Put student voice and choice at the center of the process.

In this engaging and well-researched book, Dueck reveals troubling issues related to traditional approaches and offers numerous examples of educators at all levels who are transforming assessment by using tools and methods that engage and empower students. He also shares surprising revelations about the nature of memory and learning that speak to the need for rethinking how we measure student understanding and achievement.

In this book study, teachers will find sound advice and detailed guidance on how to:

- ➡ Share and co-create precise learning targets
- ➡ Develop student-friendly rubrics linked to standards
- ➡ Involve students in ongoing assessment procedures
- ➡ Replace flawed grading systems with ones that better reflect what students know and can do
- ➡ Design structures for students' self-reporting on their progress in learning

DETAILS

Format: Online - Synchronous & Asynchronous

Dates: Synchronous Online: 10/27; Asynchronous Online: 10/28-12/23

Time: 4:30 p.m. - 6:30 p.m.

Facilitator: Mary Ann Nickloy, GCRTC Teacher Leadership Coach for MS Mathematics

Contact: maryann@teachers-center.org | **Fee:** None. Registration is required.

CTLE hours: 15 | **Registration:** <https://tinyurl.com/ysxyknev>

NOTE

Participating educators will need to obtain a copy of the book *Giving Students a Say: Smarter Assessment Practices to Empower and Engage*, by Myron Dueck,.





FALL 2021 OFFERINGS

15 CTLE HOURS PER COURSE

REGISTER: [HTTPS://BIT.LY/AATLASREG](https://bit.ly/aatlasreg)

LEARN MORE: [AATLASED.ORG](http://aatlased.org)



DIGITAL TOOLS FOR REMOTE EDUCATION

An introduction to digital learning tools such as Schoology, Google Classroom, PowerPoint, Google Slides, screen-casting and more.

Course Number: A-EDU 2

Instructor: Stacy Robison, eLearning Instructional Design Manager

TEACHING CODING IN THE K-12 CLASSROOM

Learn basic programming concepts, build sample programs from scratch, build a webpage in HTML and CSS, preview other programming languages and platforms.

Course Number: A-EDU 3

Instructor: Stacy Robison, eLearning Instructional Design Manager

TEACHING AND LEARNING REMOTELY IN K-12 EDUCATION

Learn more about how effective online education differs from traditional classroom experience and how you can adapt.

Course Number: A-EDU 4

Instructor: Marc Freed, Curriculum Development & Instructional Technology

INCREASING INTRINSIC MOTIVATION IN STUDENTS AT HOME & SCHOOL

Discuss the tenets of competence, autonomy, and relatedness, and the facilitation of those basic psychological needs.

Course Number: A-EDU 5

Instructor: Dr. Gina Riley, Clinical Professor & Program Leader of the Adolescent SPED, Hunter College

HOME LEARNING 101: DIGITAL RESOURCES & INSTRUCTION

Curate digital resources for all major subjects, for students in any grade or age range.

Course Number: A-EDU 6

Instructor: Dr. Gina Riley, Clinical Professor & Program Leader of the Adolescent SPED, Hunter College

CREATING A DECISION-MAKING CURRICULUM FOR STUDENTS AT SCHOOL AND AT HOME

Decision-making tools, autonomy support, development levels and abilities.

Course Number: A-EDU 7

Instructor: Dr. Gina Riley, Clinical Professor & Program Leader of the Adolescent SPED, Hunter College

NATIONAL BOARD

for Professional Teaching Standards®



NATIONAL BOARD VIRTUAL PROFESSIONAL SUPPORT PROGRAM: ENGAGING EDUCATORS IN THE SYSTEMATIC STUDY AND IMPROVEMENT OF INSTRUCTIONAL PRACTICE THROUGH THE NATIONAL BOARD PROCESS

In this support program, teachers will work collaboratively and focus on their selected component work around a chosen National Board certificate area & developmental level. Teachers will be provided with the opportunity to highlight their professional decision-making abilities to evaluate learning strengths and needs for students; differentiate instruction; analyze and modify instructional strategies and materials based on ongoing assessment; and be a reflective practitioner. This professional learning course is based on the 5 Core Propositions, Architecture of Accomplished Teaching, and certificate area standards as well as specific component instructions. Teachers engaged in this learning will receive support, as a cohort, to help them unpack the teaching standards, prompts, and improve their professional practice, through further development as descriptive, analytical, and reflective practitioners.

DETAILS

Format: Online - Synchronous

Dates: 10/6, 10/20, 11/3, 11/17, 12/2, 12/15, 1/5, 1/20, 2/3, 2/16, 2/23*, 3/17, 3/30, 4/13, 4/27, 5/11

Time: 3:30 p.m. - 5:00 p.m. (10/6 will end at 5:30 p.m.); *Online writing support 2/23: 8:30 a.m. - 3:30 p.m.

Facilitators: Colleen McDonald, NBCT and Rita Floess, NBCT

Contact: valerie@teachers-center.org | **Fee:** None. Registration is required.

CTLE hours: 30 | **Registration:** <https://tinyurl.com/ym5d4872>

NBCT MAINTENANCE OF CERTIFICATION COHORT 2021-2022

This cohort will provide sustained and collaborative support to NBCTs pursuing their NBPTS Maintenance of Certification. Under the guidance of the facilitator, this program provides time and expertise in understanding the component directions, peer review, and collegial support. This group will meet monthly throughout the school year with work between sessions.

"Why Maintain Your Certification?"

Maintaining your certification is a personal and public statement about your commitment to the profession and to your students. Accomplished teachers recognize that their professional learning and growth never ends. In any given subject and developmental area, best practice and knowledge are constantly evolving. At the same time, changes in technology and policy affect every aspect of education, from the classroom to administration. Maintaining your certification allows you to maintain your title as a National Board Certified Teacher and will stay with you if you retire, leave the classroom, or change careers. The MOC process allows you to reflect on how your teaching practice continues to support student learning." nbpts.org

DETAILS

Format: Online - Synchronous | **Dates:** 10/13, 11/10, 1/12, 2/9, 3/9, 4/13 | **Time:** 4:00 p.m. - 7:00 p.m.

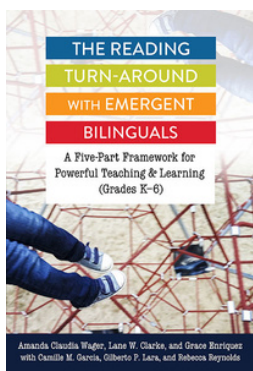
Facilitator: Jennifer Toohey, NBCT, Niskayuna CSD

Contact: valerie@teachers-center.org | **Fee:** None. Registration is required.

CTLE hours: 18 | **Registration:** <https://tinyurl.com/ktjr2bp9>

ENGLISH LANGUAGE ARTS

THE READING TURN-AROUND WITH EMERGENT BILINGUALS: A FIVE-PART FRAMEWORK FOR POWERFUL TEACHING AND LEARNING - BOOK STUDY



Ever wonder how to reach your bilingual learners' needs? Perhaps you might wonder if the strategies you're using are making an impact? Wagner's, Clarke's, Enriquez's, Garcia's, Lara's and Reynolds (2019) *Reading Turn-Around with Emergent Bilinguals* is an excellent read packed full of strategies, resources, and applied examples for all teachers of emergent bilinguals. The structure of this text is easy to follow with a clear breakdown of a five-part reading framework including code-breaking, meaning-making, text-using, text-analyzing, and student identity. Each chapter begins with a vignette that highlights an emergent bilingual, their social and cultural background, the current learning context and a highlighted area of need. Through the lens of each student, the authors take us on a journey of exploring and critically thinking about each learner, their strengths, and creating unique and powerful reading plans that outline student created goals. Each section is full of resources and practices that might be beneficial for increasing student voice, engagement, connections, vocabulary, the use of multimodal tools, and much more!

DETAILS

Format: Online - Asynchronous

Dates: 10/12-11/16

Facilitator: Lorena Hurst, GCRTC Teacher Leadership Coach for Elementary Education

Contact: lorena@teachers-center.org

Fee: None. Registration is required.

CTLE hours: 15

Registration: <https://tinyurl.com/3mwj4ucy>

NOTE

Participating educators will need to obtain a copy of the book *The Reading Turn-Around With Emergent Bilinguals* by Wager, Clarke, and Enriquez.



ENGLISH LANGUAGE ARTS

CHILDREN'S LITERACY: ENCOURAGING IDENTITY AWARENESS THROUGH CONVERSATION AND COMPOSING

Let's dive into children's literature and explore possibilities that promote identity building and encourage children to develop a love and a passion for writing. We'll explore several different authors' such as Peter Reynolds, Grace Byers and Wendy Ewald, to name a few. We'll discover and come to know more deeply who these authors are as individuals and as writers, as we analyze their craft. Educators will engage in conversation around selected books, approximate and emulate writing patterns through journaling, either digitally or in paper form, as well as build individual and collective identities. We'll gather new ways of knowing and imagine, or re-imagine classroom resources together. Each learning event can be adapted or directly transferred to participants' classroom context. Participants will not need to purchase course texts.

DETAILS

Format: Online - Asynchronous

Dates: 10/14-11/18

Facilitator: Lorena Hurst, GCRTC Teacher Leadership Coach for Elementary Education

Contact: lorena@teachers-center.org

Fee: None. Registration is required.

CTLE hours: 15

Registration: <https://tinyurl.com/wd8axeue>





WRITING WITH URGENCY AND WONDER: STRATEGIES TO SUPPORT STUDENT-LED INQUIRY THROUGH WRITING

At the Capital District Writing Project we have been working - passionately and collaboratively - to develop, share, analyze, and refine effective lessons about literacy and writing for all age groups and all content areas. We'd like to include you in our conversations by sharing our lessons with you and other Capital District teachers. In this Saturday Seminar, teachers will lead participants in interactive writing engagements that they have pursued with their own students. Teachers of all subject areas and grade levels are welcome.

DETAILS

Format: In-person | **Location:** University at Albany, Catskill Building, Room 204 | **Date:** Saturday, 11/6
Time: 9:00 a.m. - 12:00 p.m. | **Facilitator:** Amy Salamone, English teacher, Guilderland HS
Contact: salamonea@guilderlandschools.net | **Fee:** \$30 - Pay by credit card: <https://tinyurl.com/25z8kmex>
Pay by check/PO: Contact Olivia Pounds - opounds@albany.edu | **CTLE hours:** 3
Registration: <https://tinyurl.com/ydp6jj2y>



CONTINUING OUR SEARCH FOR TEXTS THAT CHANGE READERS: A YEAR-LONG STUDY GROUP OF NEW AND NOTEWORTHY FICTION

We need our colleagues to help solve the many problems that come to bear upon our libraries & classrooms. Many of the students we teach depend primarily upon educators & the school system for nourishment - physical, cognitive, emotional, intellectual, and literary. There is nothing more rewarding than to see a student become an avid reader. It is a daunting task to keep up with new books and to continue helping students find THE book - that one particular book that changes the student from reluctant to read to willing to read, and from willing to read to wanting to read. The difficulty of finding that "right" book is that the "right" is a moment in time - temporary and individual. Teachers must have a huge repertoire of book knowledge to be able to match readers with books that are potentially game changes for the reader. This program is open to all educators.

DETAILS

Format: In-person
Location Option 1: Lisha Kill MS Library | **Dates:** (Wednesdays) 9/29, 10/27, 12/1, 1/5, 2/2, 3/2, 4/13, 5/11, 6/15
Time: 4:00 p.m. - 6:00 p.m. | **Registration:** <https://tinyurl.com/uwyyp45b>

Location Option 2: Greenville MS/HS Library | **Dates:** (Mondays) 10/4, 11/1, 12/6, 1/10, 2/7, 3/7, 4/4, 5/2, 6/6
Time: 4:00 p.m. - 6:00 p.m. | **Registration:** <https://tinyurl.com/ap6h99w>

Facilitator: Sherry Guice, Ed.D, South Colonie CSD | **Contact:** acarcny@gmail.com
CTLE Hours: 30 | **Fee:** \$130 non-ACARC members (includes membership); \$100 ACARC members



WALKING, TALKING AND READING TO MAKE A DIFFERENCE

Join ACARC as we "walk and talk" about the book, *Reading to Make a Difference: Using Literature to Help Students Speak Freely, Think Deeply, and Take Action*, by Lester Laminack and Katie Kelly. In their book, Laminack and Kelly discuss the notion of "books as bridges" to help readers "speak freely, think deeply, and take action." The authors describe how to move beyond exposing students to diverse children's literature by offering an instructional framework that can be adapted to your own classroom or community.

ACARC leaders will facilitate discussions in small walking groups highlighting several chapters from the book. We will then come back together for a brief discussion to share ways to incorporate these strategies in our daily practice. Open to all educators. Participating educators are encouraged to read the focus book, *Reading to Make a Difference*, prior to the event, but it is not a requirement in order to attend this program.

DETAILS

Format: In-person | **Location:** The Crossings, West Pavilion, 580 Albany Shaker Rd, Loudonville, NY

Date: 10/20 (Rain date: 10/21) | **Time:** Registration - 4:00 p.m. - 4:30 p.m.; Event - 4:30 p.m. - 5:30 p.m.

Contact: acarcny@gmail.com | **Facilitators:** ACARC leaders

Fee: \$10 for nonmembers; Free for ACARC members (Annual membership: \$30). Registration is required.

CTLE hours: 1 | **Registration:** <https://tinyurl.com/ymr6bk6p>

BEST BOOKS OF 2021

Quality literature helps to encourage reading for students and helps teachers meet the NYS standards. Find out what's new in Children's and YA literature as four local experts share their top recommendations for readers of all ages. Teachers will gain knowledge of new literature to engage and motivate readers. Don't miss ACARC's ever popular event!

DETAILS

Format: In-person & Synchronous Online

Location: Saddlewood Elementary, 100 Lorelee Drive, Albany, NY

Date: 12/7 | **Time:** Registration - 4:00 p.m. - 4:30 p.m.; Event - 4:30 p.m. - 6:30 p.m.

Facilitators: Sherry Guice, South Colonie Schools, Susan Kirby-LeMon, Shenendehowa Central Schools, Lucy Maynard, South Colonie Schools, Helen Stuetzel, Consultant

Contact: acarcny@gmail.com | **Fee:** \$10 for nonmembers; Free for ACARC members (Annual membership: \$30). Registration is required. | **CTLE hours:** 2 | **Registration:** <https://tinyurl.com/24htuesp>

NEW YORK STATE READING ASSOCIATION (NYSRA) CONFERENCE

NYSRA's annual conference will be offering virtual and in-person sessions. The in-person conference is being held in Rochester, NY on November 11-12, 2021. ACARC members receive a discounted conference rate. See NYS Reading Association's [2021 NYSRA Conference](#) for more information.

- To become an ACARC member, go to <https://www.nysreading.org>, click on the membership link & choose ACARC.
- Visit our website for more info: <https://www.albanycityareareadingcouncil.com>.

VISUAL & PERFORMING ARTS

DRAWING CONNECTIONS



In this course, art educators will lead a classroom lesson with fellow art educator participants engaging as students in the class. The lesson will integrate instruction with conversations about methods, materials, arts standards, adaptations to support a variety of learners, opportunities to provide for students in various instructional models, and more. Educators will leave with first-hand experience in specific visual arts lessons and concepts for integration.

DETAILS

Format: Online - Synchronous | **Dates:** 9/30 & 10/28 | **Time:** 4:00 p.m. - 7:00 p.m.

Facilitators: Rebecca Plouff, Shenendehowa Art Teacher, & Betsy Ryan, South Colonie Art Teacher

Contact: kate@teachers-center.org | **Fee:** None. Registration is required.

CTLE hours: 6 | **Registration:** <https://tinyurl.com/5y6wk54d>

SEL IN THE FINE ARTS

Social-emotional learning is essential to students' well-being. There is a great deal of research to demonstrate that arts-based learning often leads to profound impact, with outcomes such as improvements in student learning and mastery, student engagement, and positive school culture and climate. In this course, educators will recognize the CASEL competencies, identify and improve application in their own fine arts classrooms, and learn strategies to support students beyond their arts classrooms.



DETAILS

Format: Online - Synchronous & Asynchronous

Dates: Asynchronous Online: 10/1-12/1; Synchronous Online: 10/7, 10/21, 11/4, 11/18, 12/2

Time: 4:00 p.m. - 5:00 p.m.

Facilitator: Kate Jarrard, GCRTC Teacher Leadership Coach for the Visual and Performing Arts

Contact: kate@teachers-center.org | **Fee:** None. Registration is required.

CTLE hours: 15 | **Registration:** <https://tinyurl.com/2jujt5yv>

VISUAL & PERFORMING ARTS

DIVERSIFYING THE GENERAL MUSIC CLASSROOM

In an effort to ensure our classroom supports students of all cultural backgrounds, participants in this fully-online course will research repertoire used in their own classrooms and learn about and develop lessons to expand repertoire opportunities. Teachers will select songs that focus on desired learning elements and/or skills, develop lessons to support learnings, and create an activity or method to relate the piece to one of the new NYSED standards for music education. All exercises and activities/methods will be shared with course participants and added to our new online library of activities for student achievement to be shared with area music teachers.



DETAILS

Format: Online - Asynchronous

Dates: 10/11-11/15

Facilitator: Kate Jarrard,
GCRTC Teacher Leadership Coach for the
Visual and Performing Arts

Contact: kate@teachers-center.org

Fee: None. Registration is required.

CTLE hours: 15

Registration: <https://tinyurl.com/3f2u9k3p>

PROMOTING REPRESENTATION THROUGH BAND/CHORUS/ORCHESTRA REPERTOIRE



In this online course, educators will analyze band, chorus, or orchestra music by underrepresented composers, including orchestration and style considerations for what makes a quality piece for students. Teachers will isolate a challenging technical requirement/selection and create a specific exercise for students to gain skills for the selection. In addition, they will create an activity or method to relate the piece to one of the new standards for music performance. All exercises and activities/methods will be shared with course participants and added to our online library of activities for student achievement to be shared with area music teachers.

DETAILS

Format: Online - Asynchronous

Dates: 10/11-11/15

Facilitator: Kate Jarrard, GCRTC Teacher Leadership Coach for the Visual and Performing Arts

Contact: kate@teachers-center.org | **Fee:** None. Registration is required.

CTLE hours: 15 | **Registration:** <https://tinyurl.com/kp7ed3xk>



Berkshire-Hudson Valley Chapter

DIFFERENTIATED ORFF: SONG, DANCE, AND ASSESSMENT

Discover fun and innovative ways to engage students of all skill levels, across the music curriculum together in your music program. We will learn a wide variety of activities that allow you opportunities to assess the students easily through games and differentiated instruction. Activities will focus on grades K-5 music. Led by Deb Navin, who teaches General Music at Greenfield & Beverly Elementary Schools in the Birmingham Public School District, Birmingham, MI. She is certified in Orff-Schulwerk and has trained in Music Learning Theory and World Music Drumming, and taught General Music, Choir, and Band in public and private schools in Massachusetts, Pennsylvania, & Michigan. She is a frequent national presenter for music teacher workshops and serves on the national board of the American Orff-Schulwerk Association.

DETAILS

Format: In-person | **Location:** South Colonie CSD (room TBA)

Date: 9/25 | **Time:** 9:00 a.m. - 1:00 p.m. | **Note:** Please bring a recorder, if you have one.

Facilitator: Deb Navin, Music Specialist, Birmingham, MI

Contact: bhvaosa@gmail.com | **CTLE hours:** 4 | **Registration:** <https://tinyurl.com/4u5d9tnb>

Fee: This workshop is free for BHVAOSA 2021-2022 members. The non-member educator fee is \$45.00. The college student fee is \$10.00. Payments will be accepted at the event, or in advance by mailing a check (payable to "BHVAOSA") to Heidi Levin, BHVAOSA Treasurer, 9 Mennen Road, Schuylerville, NY 12871. Online payments can be made through our website: bhvorff.net

PROCESS AS CONTENT: A JOURNEY OF UNDERSTANDING ORFF PEDAGOGY

This workshop will give participants an opportunity to focus on the Orff Schulwerk pedagogical processes for teaching creative movement and instrumental pieces. Led by Dr. Rob Amchin, a distinguished teaching professor at the University of Louisville and Concentration Coordinator in Music Education. Dr. Amchin is a sought after teacher of Orff pedagogy leading workshops, Orff summer courses, and master classes throughout the US and around the world including classes in China, Singapore, Finland, Russia, Austria, Canada, Israel, Hong Kong, and Poland. He has authored several books for Orff ensemble and recorder.

DETAILS

Format: In-person | **Location:** South Colonie CSD (room TBA)

Date: 10/16 | **Time:** 9:00 a.m. - 1:00 p.m. | **Note:** Please bring a recorder, if you have one.

Facilitator: Dr. Rob Amchin, Teaching Professor of Music Education, University of Louisville

Contact: bhvaosa@gmail.com | **CTLE hours:** 4 | **Registration:** <https://tinyurl.com/m3btymaz>

Fee: This workshop is free for BHVAOSA 2021-2022 members. The non-member educator fee is \$45.00. The college student fee is \$10.00. Payments will be accepted at the event, or in advance by mailing a check (payable to "BHVAOSA") to Heidi Levin, BHVAOSA Treasurer, 9 Mennen Road, Schuylerville, NY 12871. Online payments can be made through our website: bhvorff.net

TECHNOLOGY

DRONE PLC

In recent years recent years, it has become increasingly common for teachers to utilize interactive learning tools such as drones in the classroom. By welcoming drones into the classroom, teachers have a new way of making learning more fun, innovative and interactive for their students. Do you have an interest in drones and would like to learn how to use them in the classroom, or a general interest for personal use? Join our brand new Drone PLC and learn from others as we share best practices, knowledge and innovative ideas to take full advantage of these awesome tools.



DETAILS

Format: Online - Synchronous & Asynchronous

Dates: Synchronous Online: 10/6, 10/20, 11/3, 11/17; Asynchronous Online: 10/13-11/17

Time: 4:30 p.m. - 6:30 p.m.

Facilitator: Geoff Bizan; GCRTC Teacher Leadership Coach for Technology Integration

Contact: geoff@teachers-center.org

Fee: None. Registration is required.

CTLE hours: 15 | **Registration:** <https://tinyurl.com/wwwnvehy5>

GOOGLE TOOLS FOR SPECIAL EDUCATORS (AND ALL TEACHERS!)

In this course, we will explore Google tools that work especially well for special education students, in addition to being helpful for all students. Educators will learn a variety of tools and discuss their potential for supporting learning in the special education as well as general education context. Opportunities to try these strategies out in a supportive collegial environment will build educator confidence and maximize the learning potential of all students. Each week, you will be introduced to a set of tools to explore asynchronously for one hour and then we will meet via Zoom to discuss their promise and potential pitfalls. All educators, including those teaching in special classes and inclusive settings, are encouraged to attend.



DETAILS

Format: Online - Synchronous & Asynchronous

Dates: Asynchronous start: 10/7;

Synchronous meetings: 10/14, 10/21, 10/28, 11/4, 11/18, 12/2

Time: 7:00 p.m. - 8:30 p.m.

Facilitator: Erica Egdemir, Catskill CSD Special Education Teacher

Contact: valerie@teachers-center.org

Fee: None. Registration is required.

CTLE hours: 15 | **Registration:** <https://tinyurl.com/2p9mverc>

TECHNOLOGY

COMPUTER SCIENCE STANDARDS PLC

In 2018, NYSED passed a law to draft the NYS K-12 Computer Science Learning Standards. We are currently in the capacity building stage, with full implementation expected for fall of 2023. Join this PLC for a better understanding of the new standards, best practices and resources. Sharing of ideas and resources is key and this collaborative PLC will get us ready for implementation.

DETAILS

Format: Online - Synchronous & Asynchronous

Dates: Synchronous Online: 10/11, 10/25, 11/8, 11/22; Asynchronous Online: 10/11-11/22

Time: 4:30 p.m. - 6:30 p.m.

Facilitator: Geoff Bizan, GCRTC Teacher Leadership Coach for Technology Integration

Contact: geoff@teachers-center.org | **Fee:** None. Registration is required.

CTLE hours: 15 | **Registration:** <https://tinyurl.com/ydmver99>

SCIENCE

TEACHING MEDIA AND SCIENCE LITERACY: MAKING SENSE OF BIG DATA, FAKE-SCIENCE, AND MISINFORMATION

Our students are bombarded with a constant stream of information. Making sense of it all and determining fact from fiction is becoming more challenging. The events of the last few years - from racial and gender injustice to climate change and COVID/vaccine misinformation- have made it apparent that the stakes are high and our students could use some help. Teachers of all disciplines and grade levels can play a role in providing students with the skills to make scientifically informed decisions by addressing data and media literacy.

In this 7.5 hour course, participants will discuss the challenges our students face and learn strategies to address them in the classroom. Topics will include data puzzles, fake science, ethics, artificial intelligence and informed media consumption. Lesson examples will be provided and there will be time to apply concepts to your classroom.



DETAILS

Format: Online - Synchronous & Asynchronous

Dates: Synchronous Online: 9/30 & 10/28; Asynchronous Online: 9/30-10/28

Time: 4:30 p.m. - 6:30 p.m.

Contact: james@teachers-center.org

Facilitators: James St.Denis & Geoff Bizan, GCRTC Teacher Leadership Coaches

Fee: None. Registration is required.

CTLE hours: 7.5

Registration: <https://tinyurl.com/frcymf8>

SCIENCE

PERSONAL GENETICS AND SOCIOSCIENTIFIC ISSUES

In this course, the science of genetics, genetic testing, and gene editing will be discussed, along with the social, legal and ethical implications of the genetic revolution that is underway. In addition to genetics, other socioscientific issues will be discussed and teachers will have an opportunity to develop classroom materials and learn more about a topic of interest as it relates to their discipline and students (e.g., equitable healthcare, genetics and crime/law enforcement, the history of the American Eugenics Movement, genetics and disabilities, global climate change, environmental radioactivity, fish farming, calculating the statistical chances of developing disease, computer science as it relates to bioinformatics, functional medicine versus conventional medicine, COVID/mask-wearing/vaccines, etc.). Educators will have the opportunity to contribute to our learning session by way of sharing information on what they have learned/researched throughout the course. Teachers of any discipline and grade level are welcome.



DETAILS

Format: Online - Synchronous & Asynchronous

Dates: Synchronous Online: 10/5, 11/2, 11/23; Asynchronous Online: 10/12-11/23

Time: 4:00 p.m. - 6:00 p.m. (10/5, 11/2); 4:00 p.m. - 5:00 p.m. (11/23)

Facilitator: Connie Woytowich, Science Teacher, Colonie Central HS, NYS Master Teacher

Contact: CTLE/Registration: james@teachers-center.org; Course/Content: woytowichc@scolonie.org

Fee: None. Registration is required.

CTLE hours: 15 | **Registration:** <https://tinyurl.com/sscjmant>

NY STATE SCIENCE LEARNING STANDARDS (NYSSLS) WORKGROUP

Join a diverse group of learners as we explore the NYS Science Learning Standards and how they translate to science education. Learn how to unpack the standards and work together to gather resources to help you achieve your classroom goals. Through synchronous and asynchronous sessions, educators will evaluate resources and planning tools while sharing knowledge and experiences with 3-dimensional learning. Time will be provided to take what you have learned and develop curriculum resources as well as share and receive feedback on your progress. All levels, from Elementary to High School will benefit.



DETAILS

Format: Online - Synchronous & Asynchronous

Dates: Synchronous Online: 10/6, 10/20, 11/3, 11/17, 12/1, 12/15; Asynchronous Online: 10/6-12/15

Time: 4:30 p.m. - 6:00 p.m.

Facilitator: Shannon Gilroy, NYS Master Teacher

Contact: CTLE/Registration: james@teachers-center.org; Course/Content: sgilroy@queensburyschool.org

Fee: None. Registration is required.

CTLE hours: 15 | **Registration:** <https://tinyurl.com/u7pvfe8f>

SPECIAL EDUCATION

TEACHING EXCEPTIONAL STUDENTS IN THE INCLUSIVE CLASSROOM PLC

Collaboration is a high leverage practice for diverse learners, but what does that look like in practice? In this PLC, teachers, co-teaching teams, school related professionals, and administrators are invited to deepen their knowledge of the high leverage practices that support diverse student populations. Assuring high expectations for all students, while allowing for multiple entry points to the Next Generation Standards, is not only mandated but it is actually within our reach! Topics include universal design for learning; grading, assessment and feedback; Multi-Tiered Systems of Support. This course will meet each month to share student artifacts and set action plans for improved student outcomes, and then alternate with asynchronous analysis of resources.



DETAILS

Format: Online - Synchronous & Asynchronous

Dates: Synchronous Online: 10/6, 11/17, 12/15, 1/12;

Asynchronous Online: 10/6-1/12

Time: 4:00 p.m. - 5:30 p.m.

Facilitator: Liz Daley, GCRTC Teacher Leadership Coach for Special Education

Contact: liz@teachers-center.org

Fee: None. Registration is required.

CTLE hours: 15

Registration: <https://tinyurl.com/a42ayn28>

TEACHING ASSISTANT SUPPORT SERIES: NEXT GENERATION STANDARDS

All Teaching Assistants and Classroom Aides are welcome to join us for this timely addition to our long-running professional learning series dedicated to you! New York State has begun implementing the Next Generation Standards in English, Mathematics and Science - What impacts will they have on our students and our instructional practices? Collaborate with peers in the Capital Region to continue building knowledge, skills and attributes that support diverse learners. We will meet five times in-person, with an option to attend via zoom. After each session, participants will complete one task for a total of 15 hours.

DETAILS

Format: In-Person & Asynchronous Online (fully online option also available)

Location: Shaker Rd. Elementary, Library

Dates: In-Person: 10/12, 11/9, 1/11, 3/8, 5/10; Asynchronous Online: 10/12-5/10

Time: 4:30 p.m. - 6:30 p.m.

Facilitators: Liz Daley and MaryAnn Nickloy, GCRTC Teacher Leadership Coaches

Contact: liz@teachers-center.org | **Fee:** None. Registration is required.

CTLE hours: 15 | **Registration:** <https://tinyurl.com/fvr6taf>

SPECIAL EDUCATION

TOPICS IN SPECIAL EDUCATION WITH THE COUNCIL FOR EXCEPTIONAL CHILDREN



***"The Council for Exceptional Children (CEC) is a community of educators and partners in learning dedicated to advancing the success of students with exceptionalities. CEC's mission is to improve, through excellence and advocacy, the education and quality of life for children and youth with exceptionalities and/or special needs and to enhance engagement of their families."** - NYS CEC*

New York State Council for Exceptional Children is partnering with the Greater Capital Region Teacher Center to support high quality education services for children with exceptional needs. Through this partnership we aspire to connect our higher education community with current practitioners to support the induction of teachers in their first years of service! Together we can build bridges between research and practice and engage in collegial mentorship. Each webinar is free and open to all educators, paraprofessionals, administrators, pre-service teachers and related service providers. Sign up for each individual session.

KICK OFF CURRICULUM PLANNING WITH UNIVERSAL DESIGN TO LEARNING

This webinar will review how educators can use Universal Design for Learning to meet the needs of diverse students and the major components of UDL. Participants will learn a model of lesson design that integrates specific UDL checkpoints into ongoing instruction.

Format: Online - Synchronous | **Date:** 9/13 | **Time:** 4:00 p.m. - 5:00 p.m.

Facilitator: Dr. Rene Hauser | **Contact:** liz@teachers-center.org | **Fee:** None. Registration is required.

CTLE hours: 1 | **Registration:** <https://tinyurl.com/chsadttn>

PROGRESS MONITORING

This webinar offers practitioners the opportunity to see various tools for progress monitoring and practice solutions for their classroom.

Format: Online - Synchronous | **Date:** 10/11 | **Time:** 4:00 p.m. - 5:00 p.m.

Facilitator: Nicole Fenty | **Contact:** liz@teachers-center.org | **Fee:** None. Registration is required.

CTLE hours: 1 | **Registration:** <https://tinyurl.com/256z3b54>

PARENT ENGAGEMENT - WITH A PARENT'S PERSPECTIVE

Spend this hour learning about parenting a child with a disability. Learn how to remove barriers to effective collaboration with parents and share technology tools that facilitate two way communication.

Format: Online - Synchronous | **Date:** 11/8 | **Time:** 4:00 p.m. - 5:00 p.m.

Facilitator: Liz Daley, GCRTC Teacher Leadership Coach | **Contact:** liz@teachers-center.org

Fee: None. Registration is required. | **CTLE hours:** 1 | **Registration:** <https://tinyurl.com/868x5bv9>

CO TEACHING: WHAT'S GOING RIGHT SO FAR...AND WHAT'S NOT?

This gathering gives participants the opportunity to reflect on their progress in this unique instructional relationship and develop tools to keep themselves accountable to student outcomes.

Format: Online - Synchronous | **Date:** 12/13 | **Time:** 4:00 p.m. - 5:00 p.m.

Facilitator: TBA | **Contact:** liz@teachers-center.org | **Fee:** None. Registration is required.

CTLE hours: 1 | **Registration:** <https://tinyurl.com/acd2bu9s>

SPECIAL EDUCATION

SPECIAL EDUCATION NYS CTLE CERTIFICATION EXTENSION SERIES



New York State has an approved certification pathways for special educators interested in extending their existing certification to grades Pre-K&K and Middle Grades (5,6,7,8). The requirements for these extensions include experience in the one or both of the grade levels nearest the extension, a current NYS Students with Disabilities Generalist certification, and a 45 hour NYSED-approved course in the extension grade band. Special Educators who have an existing SWD Grades 1-6 or SWD 7-12, who are interested in obtaining an extension for the Middle Grades (5-8) or Pre-K-K, are invited to enroll whether or not they have earned the required experience. These courses meet the NYSED criteria for extending an existing NYS Students with Disabilities Generalist certification.

Course registration is available at <https://www.nysteachercenters.org>.

Current Certification	CTLE Course Requirement	Teacher Experience Requirement	Certificate Extension
Grades 1 - 6	GCRTC 45 Hour CTLE Course: Middle Grades	Minimum of 3 years teaching experience at 5th and/or 6th grade levels.	Grades 7&8
Grades 1 - 6	GCRTC 45 Hour CTLE Courses: Grades Pre-K-K	Minimum of 3 years teaching experience at 1st and/or 2nd grade levels.	Grades Pre-K&K
Grades 7 - 12	GCRTC 45 Hour CTLE Course: Middle Grades	Minimum of 3 years teaching experience at 7th and/or 8th grade levels.	Grades 5&6

NOTE

It is the responsibility of the participant to submit certificate and all necessary documentation to NYSED for certification extension consideration. Each of the courses is composed of a combination of synchronous online sessions using the Zoom platform and asynchronous assignments using the Schoology LMS. Participants will complete one assignment per session that will provide evidence of individual growth and learning in the area of study. As each course progresses, assignments will be assessed by the facilitator and feedback will be provided with a goal of mastery.

To successfully complete the series, participants must demonstrate proficiency in the NYS teaching standards including knowledge of: Evidence-based inclusive practices; Typical/atypical development; Research-based assessment strategies; Shifts in IEP guidance for that grade band; Building supportive home-school connections; Skills necessary for effective professional collaboration; Instructional techniques. The class format is structured to allow for participants to reflect on their current beliefs, practices and bias; analyze teaching standards; build skill in vetting resources; and strengthen collaborative practices.

SPECIAL EDUCATION

GCRTC 2021-2022 SPECIAL EDUCATION CTLE CERTIFICATION EXTENSION SERIES



GREATER CAPITAL REGION
**TEACHER
CENTER**
FOR EFFECTIVE TEACHING



DETAILS

- △ 45 CTLE hours per series
- △ Courses are offered at no cost to the participating educator. Registration is required.
- △ **Contact:** Liz Daley liz@teachers-center.org

PRE-K&K SERIES

FACILITATOR Sherrie Moses, Elementary Education B-6, Special Education K-12 (SAS) School Administrator/Supervisor (SDL) School District Leader

FORMAT Online - Synchronous

DATES 10/5, 10/12, 10/19, 10/26, 11/2, 11/16, 11/23,
11/30, 12/7, 12/14, 1/4, 1/11, 1/25, 2/1, 2/8

TIME Tuesdays, 4:00 p.m. - 5:30 p.m.

REGISTRATION

<https://tinyurl.com/w8akz74w>

MIDDLE GRADES (5, 6, 7, 8) SERIES

FACILITATOR Liz Daley GCRTC Teacher Coach, M.S.Ed., Special Education K-12, English 7-12, Elementary Education PreK-6, NBCT

FORMAT Online - Synchronous & Asynchronous

DATES Synchronous Online: 2/9, 2/23, 3/2, 3/9, 3/16,
3/23, 3/30, 4/6, 4/13, 4/27, 5/4, 5/11, 5/18
Asynchronous Online: 2/16, 4/20

TIME Tuesdays, 4:00 p.m. - 5:30 p.m.

REGISTRATION

<https://tinyurl.com/fdbws3pp>

COMING SOON

The NYSTC Network has worked diligently to develop a highly anticipated subject extension series in order to continue supporting the ongoing need for highly qualified special educators in New York State. To be eligible for this series, you must hold a SWD 5-9 or 7-12 certification, or permanent special education certificate; AND have at least two years of satisfactory teaching experience in grades 7-12 in the subject area you are seeking certification in, OR have an employment support commitment for mentoring.



REAL LIFE CHALLENGES FOR REAL LIFE SCHOOL PROFESSIONALS

Bus drivers, hall monitors, secretaries, teacher aides/assistants, cafeteria workers, and school nurses all have encounters with students and other professionals that sometimes need to be handled with care and consideration to avoid escalating a situation. Participants will engage in activities that are based on scenarios specific to their role in the school. Appropriate potential actions will be discussed and shared among the stakeholders to ensure an effective and productive resolution. Time will be given to reflect on past experiences and discuss effective strategies for the future. Next steps will be discussed as a means of moving forward. Open to all teachers and School-Related Professionals.

DETAILS

Format: Online - Synchronous | **Date:** 10/7 | **Time:** 4:00 p.m.- 7:00 p.m.

Facilitator: Effie McBride, NYSUT ELT | **CTLE Hours:** 3 | **Fee:** None. Registration is required.

Contact: valerie@teachers-center.org | **Registration:** <https://tinyurl.com/568ptwza>

HOW CAN WE HELP OUR YOUTH AFTER A TRAUMATIC EVENT?

Who needs more support? Which of our youth face the greatest risk of mental illness?

How can educator's influence children's experiences after traumatic events to promote wellness (over mental illness)?

This seminar will help educators identify the risk factors for developing mental illness following a crisis event and how to investigate evidence-based practices for promoting student healing. This seminar is geared toward teachers and teaching assistants.

DETAILS

Format: Online - Synchronous | **Date:** 10/18 | **Time:** 4:00 p.m.- 7:00 p.m.

Facilitator: Rita Floess | **CTLE Hours:** 3 | **Fee:** None. Registration is required.

Contact: valerie@teachers-center.org | **Registration:** <https://tinyurl.com/3aa5fnr5>

INCREASING FAMILY ENGAGEMENT TO PROMOTE THE ACHIEVEMENT OF ELLS

What are some approaches educators can use to develop effective partnerships with bilingual families?

In this session, you will examine ways to increase family engagement and improve the home-school connection with the families of our English learners while taking into consideration the four stages of immigrant parent involvement.

DETAILS

Format: Online - Synchronous | **Date:** 10/20 | **Time:** 4:00 p.m.- 7:00 p.m.

Facilitator: Tracey Sangare, NYSUT ELT | **CTLE Hours:** 3 | **Fee:** None. Registration is required.

Contact: valerie@teachers-center.org | **Registration:** <https://tinyurl.com/psd9zs45>



CREATING SAFER SPACES FOR LGBTQ STUDENTS

This seminar encourages discussions and provides a deeper awareness of the supports needed for LGBTQ Students to thrive. We will review national statistics from GLSEN's National School Climate Survey, share resources and tools for creating an inclusive School environment, and focus on how educators can create classrooms free of bullying and harassment for LGBTQ students. This seminar is geared toward teachers and teaching assistants.

DETAILS

Format: Online - Synchronous | **Date:** 11/8 | **Time:** 4:00 p.m.- 7:00 p.m.

Facilitator: Gina Sanchirico, NYSUT ELT | **CTLE Hours:** 3

Fee: None. Registration is required. | **Contact:** valerie@teachers-center.org

Registration: <https://tinyurl.com/6nk53pw6>

A PROACTIVE AND POSITIVE ENVIRONMENT FOR STUDENT ACHIEVEMENT

Closing the achievement gap among all students requires addressing all factors that influence their achievement and behavior including: classroom learning, school climate, and motivation theory. In this seminar participants will learn that a positive educational environment is a major ingredient of effective schools. Participants will examine research-based techniques that empower "at risk" students, decrease problem behavior, and improve student achievement in general. When the environment is engaging, the likelihood for success is greatly increased. This seminar is geared toward teachers and teaching assistants.

DETAILS

Format: Online - Synchronous | **Date:** 11/18 | **Time:** 4:00 p.m.- 7:00 p.m.

Facilitator: Kathy Werner | **CTLE Hours:** 3

Fee: None. Registration is required. | **Contact:** valerie@teachers-center.org

Registration: <https://tinyurl.com/s5yepcys>

FOR MORE INFORMATION ON ELT OFFERINGS

Visit <https://elt.nysut.org/> or call 1-800-528-6208.

RESILIENT SCHOOLS

POSITIVE PSYCHOLOGY

Greater Capital Region Teacher Center is proud to partner with The Center for Positive Education to offer this series of professional learning sessions for educators.



PROGRAM SERIES DETAILS

Series Facilitators: Sandra Brower, Mayfield CSD, Certified Positive Psychology Practitioner/Positive Educator; Anita Andersen, recently retired School Counselor, Niskayuna CSD, Positive Psychology Practitioner/Positive Educator

Series Contact: valerie@teachers-center.org | **Series Fee:** None. Registration is required.

INTRODUCTION TO POSITIVE PSYCHOLOGY & POSITIVE EDUCATION

What helps students to be happier and more resilient? What supports teacher well-being? This workshop gives an overview of the field of positive psychology and the science of human flourishing. Learn a framework for Positive Education that also serves as a process for flourishing in the classroom. Leave with ready-to-apply skills for managing stress and boosting positivity for students.

Participating educators will:

- Differentiate Positive Psychology from conventional Psychology
- Explore the well-being continuum and what it means for the classroom
- Understand that Positive Education is a rigorous evidence-based approach
- Identify a simplified approach to building emotional intelligence
- Define the 6 pathways (PERMA-V) to flourishing
- Experience basic resilience and happiness promoting activities for personal and classroom use
- Explore next steps for infusing the science of flourishing into one's work

COURSE DETAILS

Format: Online - Synchronous | **Date:** 10/20 | **Time:** 4:00 p.m. - 6:00 p.m.

CTLE hours: 2 | **Registration:** <https://tinyurl.com/vy7rk838>

CHARACTER STRENGTHS

Since the days of Aristotle, humans have been driven to understand what it means to live a good life. Over the past 30 years, scientists have uncovered the ingredients, and more importantly, they've identified how to use that knowledge to help children flourish personally, academically, and socially. In this workshop, discover the 24 strengths of character and how to help children know, show and grow their strengths. Learn to have strengths-based conversations to bring out the best in ourselves and our young people.

Participating educators will:

- Understand the origins of a strengths-based approach
- Differentiate strengths from traits, talents and skills
- Explore the "strengths mindset" and how to hold it while working with children
- Understand the role strengths play in overcoming challenges
- Apply 3 simple, ready-to-use strengths practices

COURSE DETAILS

Format: Online - Synchronous | **Date:** 11/3 | **Time:** 4:00 p.m. - 6:00 p.m.

CTLE hours: 2 | **Registration:** <https://tinyurl.com/3jh82966>

RESILIENT SCHOOLS

POSITIVE PSYCHOLOGY

PROGRAM SERIES DETAILS

Facilitators: Sandra Brower, Mayfield CSD, Certified Positive Psychology Practitioner/Positive Educator; Anita Andersen, recently retired School Counselor, Niskayuna CSD, Positive Psychology Practitioner/Positive Educator

Contact: valerie@teachers-center.org | **Fee:** None. Registration is required.



MINDSET

Researchers confirm that holding a growth mindset is a prerequisite for success. How is a mindset achieved? How do we train a mindset? And most importantly, how do we detect and redirect when students are developing a fixed mindset about their capacity? Join us for this overview of the science of mindset. Learn where it comes from and how to shape it.

Participating educators will:

- Understand what beliefs are, where they come from and how they are shaped
- Distinguish between a fixed mindset and a growth mindset
- Identify how to get people out of criticism mode and into learning mode
- Discover how to spot harmful beliefs and mindsets
- Uncover how mindset shapes perspectives on effort
- Learn how mindsets impact social comparison and perfectionism
- Understand how mindset relates to children's behavior when facing challenges and setbacks
- Learn a simple technique for developing a growth mindset and maintaining an openness to learn
- Identify how to sustain curiosity in students

COURSE DETAILS

Format: Online - Synchronous | **Date:** 11/17 | **Time:** 4:00 p.m. - 6:00 p.m.

CTLE hours: 2 | **Registration:** <https://tinyurl.com/3amk544f>

RESILIENCE

Resilience is arguably the most important life skill a person can possess. It's the capacity to bounce back from adversity and to pursue one's goals despite obstacles. Today's students and teachers encounter challenges and obstacles on a regular basis. This workshop provides an overview of the science of resilience, identifying it as a buildable skillset and mindset. Participating educators will learn to spot the signs of distress, how to manage stress within themselves, and help support their students to manage stress.

Participating educators will:

- Learn what resilience is and why it matters
- Learn to spot lack of resiliency in youth and adults
- Prove that resilience is a skill that can be taught
- Understand how adversity is both inevitable and a necessity for success
- Learn to redirect stress before it becomes distress
- Practice 3 simple approaches for training resilience in real-time
- Identify a simple strategy for staying curious and open when triggered instead of stuck and victimized

COURSE DETAILS

Format: Online - Synchronous | **Date:** 12/1 | **Time:** 4:00 p.m. - 6:00 p.m.

CTLE hours: 2 | **Registration:** <https://tinyurl.com/mjp8uapk>

RESILIENT SCHOOLS

COMPASSION FATIGUE AWARENESS

Avoid symptoms of burnout by understanding your own stressors and the practical treatments to lessen them. Learn how to leverage the power of self-regulation, intentionality, and perpetual maturation to combat Compassion Fatigue and impact your own professional practice. Rate your own level of compassion satisfaction and leave with the tools to increase your professional resiliency.

DETAILS

Format: Online - Asynchronous | **Dates:** 10/4-11/22

Facilitator: Mykal Karl, Cattaraugus-Allegany Teacher Center Director

Contact: valerie@teachers-center.org | **Fee:** None. Registration is required.

CTLE hours: 15 | **Registration:** <https://tinyurl.com/4k2xb39y>



COMPASSION FATIGUE TOOLKIT: WELL-BEING FOR TEACHERS

Supporting the well-being of educators benefits the entire educational system. Yes, we are caregivers, but we must also be deliberate in caring for ourselves. This course will offer the platform to discuss the social and emotional struggles of the educator in the room. Our work as caregivers and educators creates symptoms that are intrusive and seemingly pervasive, but we can begin to decrease the negative effects of our work through an acknowledgment of our emotions and the implementation of tools for resilience. This course builds upon the tools of the Compassion Fatigue Awareness course.

DETAILS

Format: Online - Asynchronous | **Dates:** 1/3-2/18

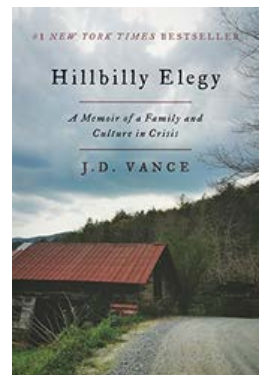
Facilitator: Mykal Karl, Cattaraugus-Allegany Teacher Center Director

Contact: valerie@teachers-center.org | **Fee:** None. Registration is required.

CTLE hours: 15 | **Registration:** <https://tinyurl.com/xvr5ym9r>

RURAL EDUCATION: IDENTITY AND HILLBILLY ELEGY

J.D. Vance's *Hillbilly Elegy*, part memoir, part social analysis, is a fascinating examination of culture, class, and the American dream of working-class white Americans in Appalachia. *Hillbilly Elegy* explores how and when "hillbillies" lost faith in the American dream and in any hope of upward mobility through the prism of Vance and his mother and grandparents. Vance's text will be used to explore the themes of rural identity, upward mobility, and social identity, as well as the strengths of our rural communities. Participants will reflect on their own unique school communities while considering the forces shaping rural education within its historical context.



DETAILS

Format: Online - Asynchronous | **Dates:** 10/4-11/22

Facilitator: Mykal Karl, Cattaraugus-Allegany Teacher Center Director

Contact: valerie@teachers-center.org | **Fee:** None. Registration is required.

CTLE hours: 15 | **Registration:** <https://tinyurl.com/y4n7th43>

NOTE Participating educators will need to obtain a copy of the book *Hillbilly Elegy* by J.D. Vance.

RESILIENT SCHOOLS

INTRODUCTION TO SPANISH FOR EDUCATORS



This course is designed for teachers with little or no background in Spanish who work with Spanish-speaking students. In addition to learning the alphabet, numbers, courtesies, date and time, and basic conversation, course participants will focus on pronunciation and learn key phrases to use with students and their parents. Common classroom vocabulary related to school supplies, upcoming events, and providing directions will be covered. Participants will also gain knowledge about the transfer of language skills from Spanish to English and learn how to help students overcome the most challenging issues.

DETAILS

Format: Online - Synchronous

Dates: 10/5, 10/12, 10/19, 10/26, 11/ 2, 11/9, 11/16, 11/30, 12/7 | **Time:** 7:00 p.m.- 8:40 p.m.

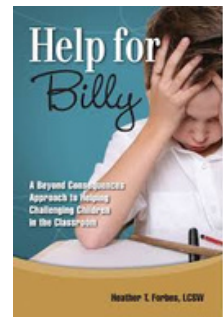
Facilitator: Kim Andersen, Capital Region Language Center, former Canajoharie Spanish Teacher and Bilingual ESL Math and Science Teacher

Contact: valerie@teachers-center.org | **Fee:** None. Registration is required.

CTLE hours: 15 | **Registration:** <https://tinyurl.com/f436tfyr>

ESSENTIAL METHODS FOR MANAGING DISRUPTIVE STUDENTS WITH COMPLEX TRAUMA

This five week book study of *Help for Billy* by Heather T. Forbes will guide you in effectively incorporating proven strategies in your classroom for trauma-impacted students who struggle with self-regulation. You will learn what the research has shown us about the effects of trauma on the brain and gain valuable new understandings for shifts you can make as teachers to support, guide and intentionally scaffold practices to tap into a student's natural desire to learn. You will compare traditional approaches to classroom management, transitions and teacher-student relationships with a new view that supports all students to learn and achieve academically.



DETAILS

Format: Online - Asynchronous

Dates: 10/17-11/21

Facilitator: Susan Alviene, Retired Teacher & Intervention Specialist, Schenectady CSD

Contact: lorena@teachers-center.org | **Fee:** None. Registration is required.

CTLE hours: 15 | **Registration:** <https://tinyurl.com/w2twed4d>

NOTE

Participating educators will need to obtain a copy of the book *Help for Billy* by Heather T. Forbes.

MATHEMATICS

MATH 3-8 NEXT GENERATION SUPPORT NETWORK (FALL/WINTER 2021 - 2022)

In this valuable support network, participants will share information and resources concerning NYS Next Generation Mathematics Standards. Come collaborate with other teachers that have the same passion and drive. Collaborate, use research to strengthen our practice, and share resources for the NYS Next Generation Mathematics Standards. Support groups will break into grade level bands. Open enrollment - Join anytime!



DETAILS

Format: Online - Synchronous

Dates: 9/23, 10/21, 11/18, 12/16

Time: 4:30 p.m. – 6:30 p.m.

Facilitator: Mary Ann Nickloy,
GCRTC Teacher Leadership Coach for MS Mathematics

Contact: maryann@teachers-center.org

Fee: None. Registration is required.

CTLE hours: 8

Registration: <https://tinyurl.com/2yea4eu7>

CDAMS 2021 - 2022 (CAPITAL DISTRICT AREA MATHEMATICS SUPERVISORS)

CDAMS is a professional learning community focused on all aspects of mathematics education, including the Next Generation Math Standards, diverse learners, technology integration and just about anything that makes math more accessible for all learners, teachers and students. **You do not have to be a “supervisor” to come to the meetings.** Join us for as many sessions as possible - Each one features a timely topic of interest to attendees.



DETAILS

Format: In-person & Synchronous Online

Location: Siena College

(Note: In the event that we cannot meet in-person, this course will be offered fully online.)

Dates: Synchronous Online: 9/27, 10/28, 1/11; In-Person: 3/2

Time: Synchronous Online: 4:30 p.m. - 6:00 p.m.; In-Person: 4:30 p.m. - 7:30 p.m.

Facilitators: Danielle Bouton-Wales, Director of K-12 STEM & Secondary Instruction,
and Mary Ann Nickloy, GCRTC Teacher Leadership Coach for MS Mathematics

Contact: maryann@teachers-center.org | **Fee:** None. Registration is required.

CTLE hours: 7.5 | **Registration:** <https://tinyurl.com/5ysb9ccb>

MATHEMATICS

IMPLEMENTING FINANCIAL LITERACY



Whether you already offer a personal finance course or are interested in exploring how you might, this course is constructed with three main pillars:

- Sharing and improving our existing grass-roots content and lessons
- Investigating the "NextGen Personal Finance" (NGPF) content
- Exploring the possibility of offering a credit-bearing college course

Content we share and discuss will include, but is not limited to: spreadsheets, banking, investments, interest, automotive finance, income taxes and withholdings, college finance and debt, stocks, and insurance. This course will be asynchronous (on your own time) and on-line using Schoology from October through January. A continuation (15 additional CTLE hours) will be offered separately during the spring semester.

DETAILS

Format: Online - Asynchronous

Dates: 10/1-12/3 (weekly Friday posts)

Facilitators: Dave Fields, GCRTC Teacher Leadership Coach for HS Mathematics & Maryann Reilly-Johnson, Financial Literacy Teacher, Colonie Central High School

Contact: dave@teachers-center.org

Fee: None. Registration is required.

CTLE hours: 15

Registration: <https://tinyurl.com/tf5mnzxs>

REGENTS MATH PLC

In the spirit of co-planning, sharing resources, staying current on NextGen NYSED developments, and brainstorming methods to overcome recent curricular challenges, join the year-long Regents Math PLC. Designed as a "regional math department," we'll share ideas and solutions across district boundaries to avoid working in isolation as we navigate through this challenging time.

DETAILS

Format: Online - Asynchronous

Dates: 10/6-5/4 (1st Wednesday of each month)

Facilitator: Dave Fields, GCRTC Teacher Leadership Coach for HS Mathematics

Contact: dave@teachers-center.org

Fee: None. Registration is required.

CTLE hours: 15

Registration: <https://tinyurl.com/6f6pppz6>

WORLD LANGUAGE

2021-22 WORLD LANGUAGE SUPPORT NETWORK AND PLC - ALBANY/SARATOGA REGION

Students and teachers alike will continue to require increased support as we navigate student learning in the ongoing pandemic. The needs of students returning to school full-time, as well as the roll-out of the new NYS World Language Standards, require teachers to collaborate, explore new ways of learning and support disconnected students more than ever. Topics for the 2021-22 Year include: New NYS World Language Standards; Increased SEL needs of both students and teachers; Comprehensible Input to increase language proficiency; Assisting students with chronic illness/absences; The Seal of Biliteracy. This PLC will meet entirely online.

DETAILS

Format: Online - Synchronous

Dates: 9/23, 10/14, 11/18, 1/13, 2/10, 3/10, 4/14, 5/12

Time: 4:30 p.m. - 6:30 p.m. (9/23: 4:30 p.m. - 5:30 p.m.)

Facilitator: Tiffany Phelps, HS Foreign Language Teacher, Burnt Hills - Ballston Lake CSD

Contact: valerie@teachers-center.org

Fee: None. Registration is required.

CTLE hours: 15 | **Registration:** <https://tinyurl.com/4emrfwsz>

NORTH COUNTRY WORLD LANGUAGE PLC

This year's PLC will focus on the updated NYS Standards for World Languages and accessing authentic materials using media and social media resources. There are so many relevant resources for authentic speech by native speakers on social media that can be tapped into, including opportunities for communication and collaboration that will satisfy and promote the new communicative and cultural standards in NYS. We will discuss how to support our students through online learning or use of classroom technology, and how to connect with them in a meaningful way during the ongoing pandemic. Continued collaboration and support for schools implementing the NYS Seal of Biliteracy program will be offered, as well as support for any teachers wishing to start the program in their school. This PLC will meet both in-person and online (depending on preference of group members), with online only meetings as an option during winter months.

DETAILS

Format: In-person & Synchronous Online | **Location:** Queensbury High School

Dates: 9/27, 10/25, 11/22, 12/20, 1/24, 2/28, 3/28, 4/25, 5/23, 6/20

Time: 3:30 p.m. - 5:00 p.m.

Facilitator: Meghan Chance, Queensbury UFSD

Contact: mchance@queensburyschool.org | **Fee:** None. Registration is required.

CTLE hours: 15 | **Registration:** <https://tinyurl.com/yf65wywn>

DASA CERTIFICATION

DASA CERTIFICATION TRAINING - FULLY ONLINE

In this NYSED approved training, participants will: understand the intent components and operational definitions present in the Dignity Act; develop and enhance awareness and sensitivity to the range of experiences of the specific student populations as named in the Dignity Act; understand how school climate and culture have an impact on student achievement and behavior; understand bullying, harassment and discrimination, including indicators, early warning signs, prevention and intervention and how to interact with families of victims and aggressors; enhance the understanding of diversity and multicultural environments and examine personal biases; articulate the Reporting Requirements for Educators as specified in the Dignity Act.



PROGRAM DETAILS

Format: Online - Synchronous & Asynchronous

Contact: Juliann DellaRocco @ jdellarocco@bhbl.org | **CTLE Hours:** 6

Fee: \$70. Please make checks payable to BH-BL Central School District. Please note, while you may register and participate in the course prior to payment, documentation of completion will not be submitted to NYSED until payment has been received by BH-BL.

Please print the registration confirmation off of Frontline and mail it with a check upon registration to:
Dottie Salvatore, BH-BL School District, PO Box 1389, Ballston Lake, NY 12019.
(Include a copy of your registration confirmation with the check)

OFFERINGS FOR 2021-2022 SCHOOL YEAR

Date/Time: 9/16 @ 4:00 PM - 7:00 PM	Registration: https://tinyurl.com/d9fey9vc
Date/Time: 10/13 @ 4:00 PM - 7:00 PM	Registration: https://tinyurl.com/56dade8
Date/Time: 11/10 @ 4:00 PM - 7:00 PM	Registration: https://tinyurl.com/3nn6s3h5
Date/Time: 12/16 @ 4:00 PM - 7:00 PM	Registration: https://tinyurl.com/2c5u5vkj
Date/Time: 1/26 @ 4:00 PM - 7:00 PM	Registration: https://tinyurl.com/2fxudjrd
Date/Time: 3/3 @ 4:00 PM - 7:00 PM	Registration: https://tinyurl.com/4xrdrpnd
Date/Time: 4/13 @ 4:00 PM - 7:00 PM	Registration: https://tinyurl.com/3dp5t9p7
Date/Time: 5/18 @ 4:00 PM - 7:00 PM	Registration: https://tinyurl.com/3h55ahud
Date/Time: 6/16 @ 4:00 PM - 7:00 PM	Registration: https://tinyurl.com/2c96ye3t
Date/Time: 7/13 @ 4:00 PM - 7:00 PM	Registration: https://tinyurl.com/kp9bc23z
Date/Time: 8/18 @ 4:00 PM - 7:00 PM	Registration: https://tinyurl.com/kcy83n6n

NOTE

Each course includes 3 hours of self-paced, online instruction, which must be completed before the 3 hours of synchronous instruction.