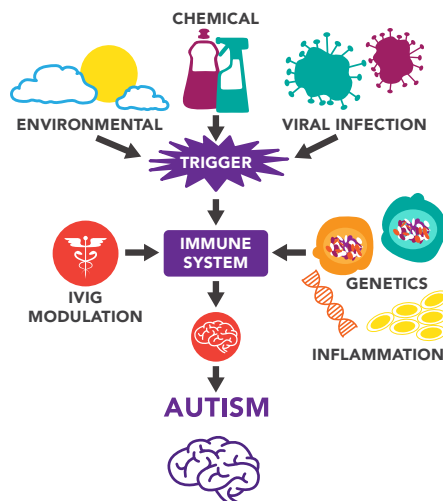


AT IMMUNO^e WE FOCUS ON YOUR IMMUNE HEALTH

At our clinical practice, we believe that the immune system is directly involved in many of the disease processes. That is why we have made it our mission to conduct research that examines the more important, complex and compelling issues surrounding the full spectrum of immune related disorders. At each of our research and clinical sites, we incorporate advanced scientific and academic methods into our practice.



DID YOU KNOW?

- That IMMUNO^e studies the link between Autism and the Immune System?
- Gut immunity and the brain are connected.
- Because the immune system communicates with the nervous system, allergic triggers such as environment, food and genetics, activate the immune system and cause inflammation.
- This may lead to neurologic and neuro-immune inflammation, which may present itself as Autism.



OUR MISSION

- To provide patients with the finest comprehensive care with an integrated delivery system
- Clinical expertise of providers in a wide range of disciplines
- Highly advanced, cutting-edge research and technologies
- Inflammation has reached epidemic proportions, which is why our focus on the immune system allows us to create critical early intervention strategies.
- Key to our approach is the coalescence we are able to achieve with on-going projects of our research division.
- To practice—and develop—not only medicine for today but medicine for the future.

303.771.9000
IMMUNO^eRESEARCH.COM



CENTENNIAL | 6801 S. YOSEMITE ST., CENTENNIAL, CO 80112
LONGMONT | 1551 PROFESSIONAL LN., SUITE 280 LONGMONT, CO 80501
THORNTON | 3240 EAST 104TH AVE., THORNTON, CO 80233

**Has your child been
diagnosed with Autism?**

**THEY MAY QUALIFY TO BE A
RESEARCH STUDY PARTICIPANT**

**FIND OUT MORE ABOUT
CLINICAL RESEARCH TODAY!**

303.771.9000
IMMUNO^eRESEARCH.COM



ABOUT AUTISM

- The gut and the immune system may be playing a role in the pathogenesis of Autism.
- One of the hypothesis being tested are the defects in digestion.
- Autism is a growing epidemic, and there is currently no drug to treat the core symptoms.

DOCTORS ARE TESTING AN INVESTIGATIONAL MEDICATION FOR AUTISM

- The Study drug (CM-AT) may help in the digestive process and thus enhance gut immunity.
- CM-AT is based on recent research that showed enzyme deficiencies in some autistic children result in an inability to digest protein. The inability to digest protein affects the availability of amino acids, the building blocks of chemicals essential for brain function.
- The pancreatic enzyme product (CM-AT) is a new formulation of a pharmaceutical product that has been used safely for over 40 years on human subjects.
- This pancreatic enzyme is thought to increase neurological function as well as reduce autistic and gastrointestinal symptoms.
- We are one of the 30 sites nationally to test this novel drug.

YOUR CHILD MAY QUALIFY IF:

- They are between the ages of 3–8 with a diagnosis of Autism
- Must weigh greater than 28 lbs.
- Doctors will check other requirements to confirm that your child qualifies for this study.

WHAT TO EXPECT:

- No pills to swallow, no blood tests
- Monitoring of your child's health by a physician during study visits
- Study duration of 14 weeks—9 clinic visits
- Qualified patients will receive compensation for time and/or travel
- All study-related visits, tests and study medications will be provided to participants at no cost*

*You do not need insurance to participate

REMEMBER—ASK QUESTIONS!

The study doctor will explain the benefits and risks of being in this research study. Please use this opportunity to ask questions. You may also take this brochure with you and talk to your doctor to help you decide if this research study is right for your family.

WHY PARTICIPATE?

- Your child may be able to contribute to scientific developments that may lead to new treatment options in the future
- Your child may be able to try an investigational medication not otherwise available outside of a research study
- You and your child will receive education and support from study personnel
- We will monitor your child's health and protect their privacy



WHAT IS A CLINICAL RESEARCH TRIAL

- A "Clinical Trial" is a research study designed to answer specific questions about investigational drugs or new ways of using known treatments.
- Physicians conduct clinical trials according to strict rules set by the Food and Drug Administration (FDA), ethical review committees and the Federal Government.