



Institute for Clinical and
Translational Research
AT EINSTEIN AND MONTEFIORE

Community Collaborative Core

Hector R. Perez, MD, MS, Director

Damara Gutnick, MD, Associate Director



Montefiore

Questions for EAC

- **Measuring impact:** We focus on scholarly production and have implemented plans for community feedback through 360 evaluations.
Are there other areas of impact we should be focusing on and/or measuring?
- **Measuring impact:** Sometimes there are delays between project initiation and dissemination/scholarly output.
Are there intermediate metrics that can help us ascertain impact during projects?
- **Supporting junior faculty members:** A pressing concern is building capacity to sustain the pipeline of CE work. We have made plans to better sustain our network of potential mentors at Einstein-Montefiore, including through a working group and a CE conference.
Are there other ways to think about building the pipeline for junior faculty?

Opportunity for improved alignment across ICTR activities & modules

- Developed aligned, integrated strategy across all ICTR modules & CCC Activities:
 - CCC leadership changes and strategic plan development (to be discussed further)
 - Redefined and aligned goals, outcomes, & metrics (to be discussed further)
 - Promoted enhanced collaborations with other ICTR modules and catalyzed new collaborations across the ICTR and institution (MECCC, CFAR)
 - Integrated Continuous Quality Improvement (CQI) structured processes

Need for improved junior faculty mentorship capacity

- Completed Current State Assessment: identified gaps
- Established mentorship capacity-building as a new CCC goal.
 - Planned initiatives include: developing a CE working group and CE conference, to better integrate and invest in investigators and potential mentors in the CCC

Aligning CCC Module & ICTR Strategic Goals

CCC GOAL 1:

Accelerate CTS research to address the significant burden of conditions that disproportionately affect populations in the Bronx.

Strategic Alignment with:

ICTR Goal 1:

Catalyze and support research to advance translational science.

CCC GOAL 2:

Promote participation of representative populations in CTR and ensure that community-academic partnerships are fully collaborative.

Strategic Alignment with:

ICTR Goal 2:

Facilitate community & stakeholder engagement throughout the translational process.

CCC GOAL 3:

Build capacity for sustainable community and stakeholder engagement in all aspects of CTS research

Strategic Alignment with:

ICTR Goals 1, 2, & 4

CCC GOAL 4:

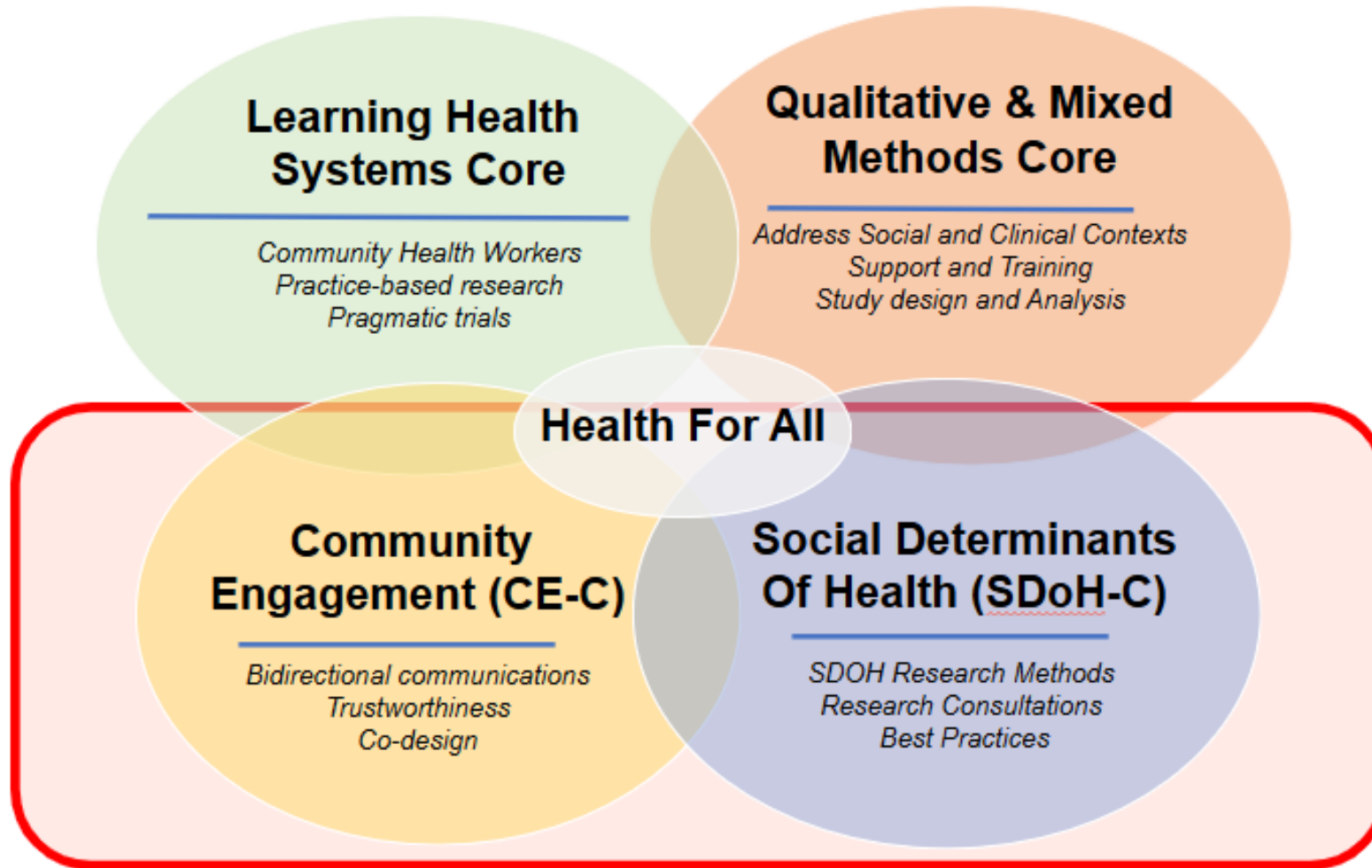
Develop and maintain a skilled, multi-disciplinary translational workforce to support and lead CE initiatives in high-quality CTR.

Strategic Alignment with:

ICTR Goal 4:

To develop and maintain a skilled, multi-disciplinary translational workforce to support and lead high-quality CTR.

CCC Organizational Structure



Year 3 Accomplishments

Community Payments

Community
Compensation Guide

Streamlined Community
Payment Processes

Community Engagement Toolkit

Community Engagement
Linkage Request (C4E)

Community
Engagement Tracker
(CE Tracker)

Community
Engagement Evaluations
(360 Partnership Evaluation)

Participation in the PCORI Trust Team
*Collaboratively developing a measure of
organizational trustworthiness*

Year 3 Accomplishments: Community Compensation Guide & Processes



- Legal and logistical considerations (Institution and federal policies (i.e. \$600 cap))
- Budgeting for different levels of community engagement (citing other CTSA standards)
- Considerations for setting compensation rates
- Considerations for choosing ideal compensation mechanism
- Compensation Rate Examples + Case Studies
- Streamlined community payment processes

Year 3 Accomplishments: Community Engagement Toolkit

Community Engagement Linkage Request (*C4E*)

- Streamlined process to connect researchers to community and faith-based organizations
- Tracking and reporting of Linkage Requests, Partnership Connections & Outcome Impact

Community Engagement Tracker (*CE Tracker*)

- Reporting of MHS CE Activities and Reach
- Track Community Organizations, Programs, Events & Contacts
- CBO Relationship Management and Sustainability
 - Enable strategic linkages that align and build off prior engagements
 - Manage smooth transitions between projects and grants
 - Alignment of requests with CBO strengths and priorities

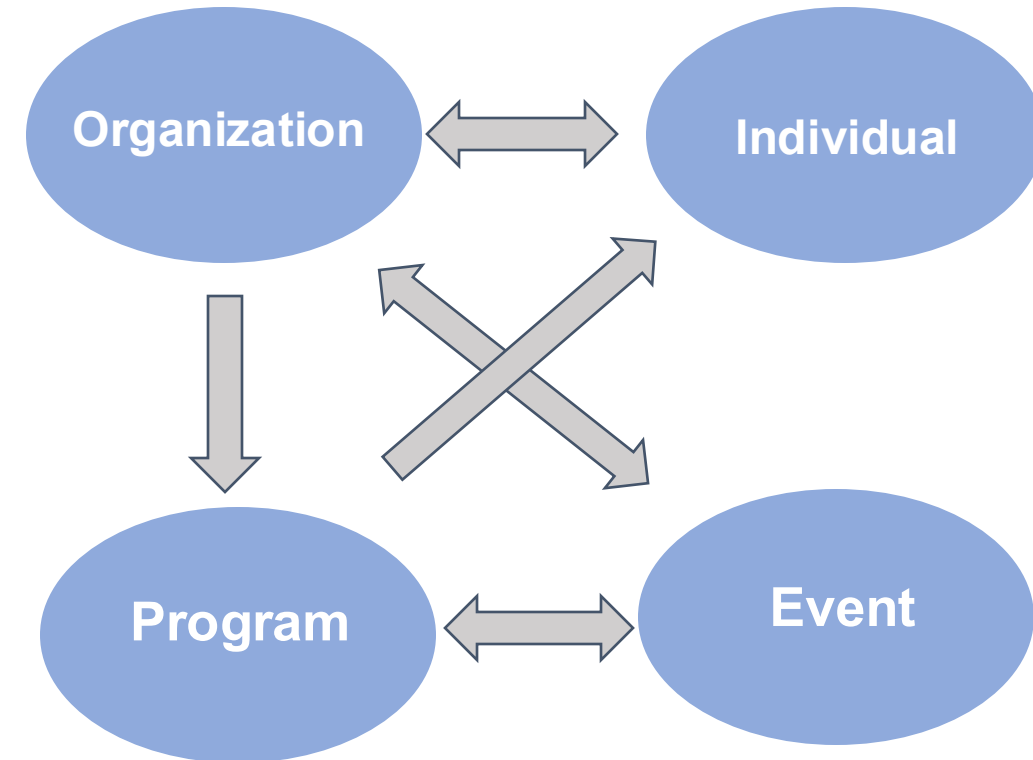
Community Partnership Evaluation (*360 Partnership Survey*)

- Hold internal partners accountable to guiding principles & best practices
- Domains include leadership, operations, impact on community and CBO, relationships with external stakeholders, institutional trust
- Identify opportunities for:
 - Process Improvement
 - Internal stakeholder coaching & training initiatives

CE Tracker

Community Engagement Tracker (CE Tracker)

- Track Community Contacts, Organizations, Programs, and Events across hospital and medical school
- Relationship Management
- Build sustainable long-term LHCC partnerships
 - Enable strategic linkages that align and build off prior engagements
 - Manage smooth transitions between projects and grants
 - Alignment of requests with CBO strengths and priorities.



Other

Expansion of primary care
research infrastructure
initiatives (NYC RING)

Community Advisory Council
(CAC) Feedback

Expansion of consultation
services in CE and qualitative
methods

New Qualitative and Mixed
Methods Core

- Free Qual software

Expanded Language
Translation Capacity

Other

Expansion of primary care
research infrastructure
initiatives (NYC RING)

Community Advisory Council
(CAC) Feedback

Expansion of consultation
services in CE and qualitative
methods

New Qualitative and Mixed
Methods Core
• Free Qual software

Expanded Language
Translation Capacity

New York City Research and Improvement Networking Group (NYC RING)



Research Infrastructure and Study Support for Primary Care Providers & Researchers

Clinical or health services research question

Identification of question by Primary Care Provider/Researcher

Methods support

IRB, protocol and grant writing

Primary Care Protocol Implementation

Dissemination of findings

NYC RING support for research and quality improvement initiated within primary care

- Support for individual projects
- Research capacity building within primary care
- Connecting with institutional resources



Study Name	Principal Investigator(s)	Project Type	NYC RING Role
Current Projects			
1. Implementation of a Centralized Screening Unit to Increase Lung Cancer Screening and Downstage Tumors in an Urban Population	Dean Hosgood PhD (PI)	Implementation Study	Investigator
2. Pragmatic Evaluation of Events And Benefits of Lipid-lowering in older Adults (PREVENTABLE)	Carlos Rodriguez, MD, MPH (Site Co-PI)	Pragmatic Clinical Trial (Multisite)	Investigator
3. Penicillin Allergy De-labeling Initiative (PADI)	Chris Oh, MD (PI)	Pilot Implementation Study	Investigator
4. 5-Cog Paradigm to Improve Detection of Cognitive Impairment in Primary Care (5-Cog 2.0)	Joe Verghese, MBBS MS (mPI)	Pragmatic Clinical Trial (Multi-site)	Investigator
Upcoming Studies (~January 2026)			
1. Improving the Quality of Care for Asthma Patients at Risk of Exacerbations (iCARE)	Elliot Israel, M.D (PI) Andrew Telzak, MD MSc (Site PI)	Implementation Study	Investigator

Other CCC achievements

Expansion of primary care
research infrastructure
initiatives (NYC RING)

Community Advisory Council
(CAC) Feedback

Expansion of consultation
services in CE and qualitative
methods

New Qualitative and Mixed
Methods Core

- Free Qual software

Expanded Language
Translation Capacity

How to Access CCC Resources

1. Complete ICTR Consultation request on ICTR Website

2. C4E Linkage Request Form

<https://redcap.einsteinmed.org/surveys/?s=R934N4HFLYDNTD4H>

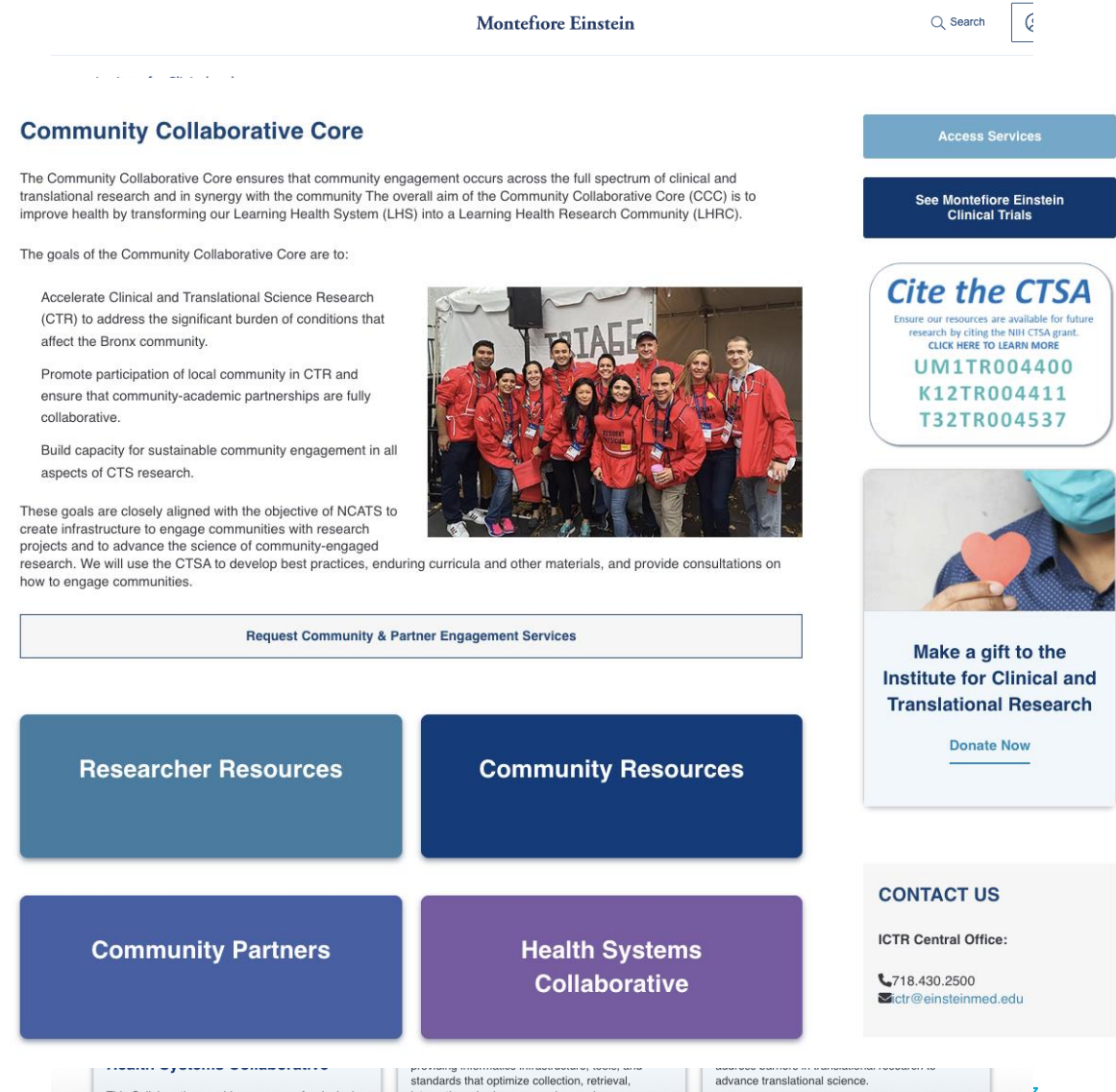


3. CE Tracker:

- Contact Jasmine Davila jdavila@Montefiore.org
- She'll arrange for you to gain access to the tool
- Onboarding to tool by Jasmine

Please consider using the tool to share your CE partnership activities, programs and events.

Note: As additional teams agree to use the tool to capture and update their Community Engagement activities, the tracker and it's reporting capabilities will become more robust



Montefiore Einstein

Search


Community Collaborative Core

The Community Collaborative Core ensures that community engagement occurs across the full spectrum of clinical and translational research and in synergy with the community. The overall aim of the Community Collaborative Core (CCC) is to improve health by transforming our Learning Health System (LHS) into a Learning Health Research Community (LHRC).

The goals of the Community Collaborative Core are to:

- Accelerate Clinical and Translational Science Research (CTR) to address the significant burden of conditions that affect the Bronx community.
- Promote participation of local community in CTR and ensure that community-academic partnerships are fully collaborative.
- Build capacity for sustainable community engagement in all aspects of CTS research.

These goals are closely aligned with the objective of NCATS to create infrastructure to engage communities with research projects and to advance the science of community-engaged research. We will use the CTSA to develop best practices, enduring curricula and other materials, and provide consultations on how to engage communities.



Request Community & Partner Engagement Services

Researcher Resources

Community Resources

Community Partners

Health Systems Collaborative

Access Services

See Montefiore Einstein Clinical Trials

Cite the CTSA
Ensure our resources are available for future research by citing the NIH CTSA grant.
CLICK HERE TO LEARN MORE
UM1TR004400
K12TR004411
T32TR004537

Make a gift to the Institute for Clinical and Translational Research

Donate Now

CONTACT US

ICTR Central Office:
718.430.2500
ict@einsteinmed.edu

ICTR CCC Communication Strategy: How can we help you?

Research Consultations: *Best Practices in. . .*

Community
Engagement & Trust
Building

Measuring SDH in
Research

Qualitative & Mixed-
Methods Research

Implementation
Science Methods

Facilitate CBO Partnerships (Grants & Programs)

C4E Linkage Request
Form

Alignment with
Guiding Principles
& Community
Priorities (CHNA)

360 Evaluation

Institutional
Trustworthiness

Community Payment Best Practices

Community Payment
Guidance

What to build into
your budget for
meaningful CE?

Streamlined
Processes for Paying
the Community

Other Resources

Dedoose Qualitative
Software

Language Translation
Resources
(300 languages)

CE tracker

BRAID & CE Studios

Impact

CCC Consultation impact

- 24 consultations
- 11 submitted grants

Qualitative Software impact

- 30 users over 10 projects

Spanish Translation Impact:

- 17 requests

CE Toolkit impact

- 36 CE Tracker users
 - 18 programs
 - 155 organizations
 - >1420 people touched by events

C4E Tracker

- 19 consultations
 - 11 were researchers
 - 2 led to grant submissions
-

Vignettes

Program area: **PHEHP Student Awards Contest**

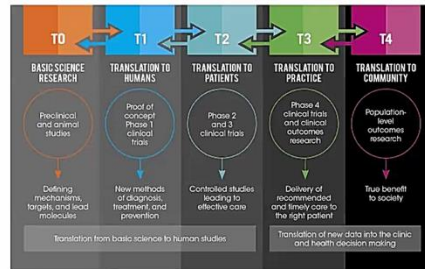
Title: Bridging research, accurate information, and dialogue (BRAID) to improve trust in science and clinical research trials

Sarah Jacobs¹, Nang Yone², Sarah McNeilly², James Campanella¹, Debra Williams, EdD⁴ and Damara Gutnick, MD⁴
 (1)Bronx, NY, (2)Albert Einstein College of Medicine, New York, NY, (3)Albert Einstein College of Medicine, Bronx, NY, (4)Montefiore Medical Center, New York, NY

Sarah Jacobs received the Public Health Education and Health Promotion Student Award from the American Public Health Association for her research abstract.

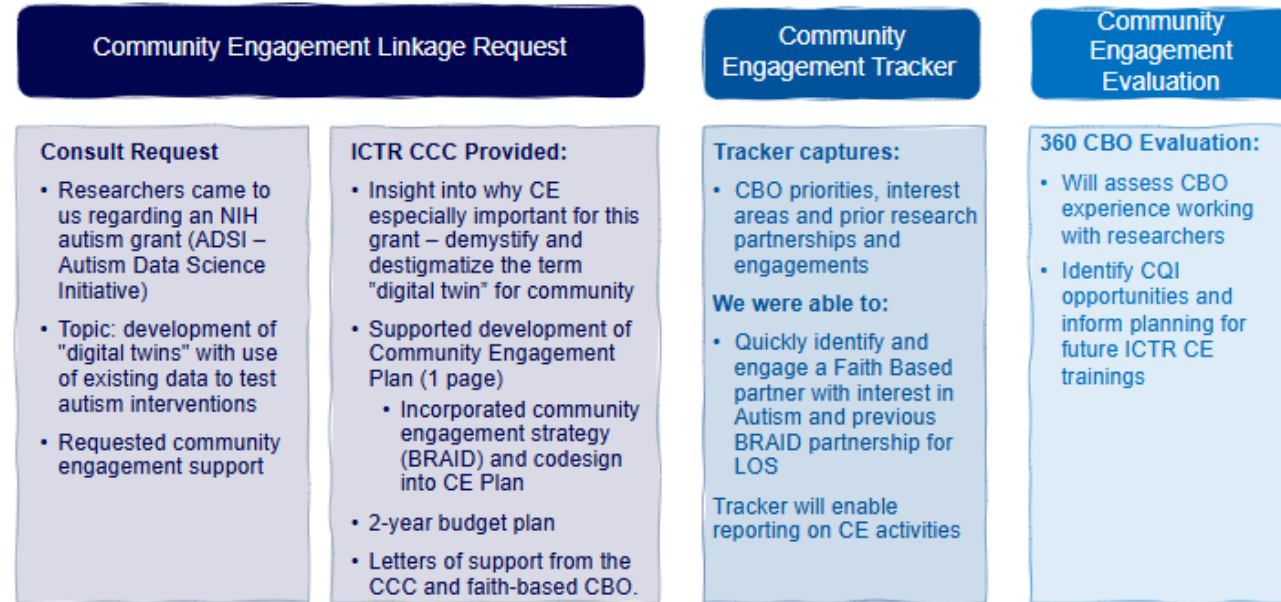
Translation

Process of turning observations in the laboratory, clinic and community into interventions that improve the health of individuals and communities.



Onboarding Presentation for CABs (Overcoming Roadblocks in Clinical and Translation Research) developed with CCC CAC & MECCC

Consultation Example: ADSI Community Engagement Plan, Budget and Partner Referral



NCATS CTSA 2025 Fall Conference Poster Presentation

Development of the Montefiore-Einstein Community Engagement Tracker

Damara Gutnick MD^{1,2,4,5}, Claudia Lechuga MS¹, Hector R. Perez, MD, MS^{1,3}, Anisha Balaji MPH¹, Elizabeth Spurrell-Huss LCSW, MPH⁴

¹ Institute for Clinical and Translational Research at Einstein, ² Montefiore Department of Epidemiology & Population Health, ³ Medicine, Montefiore Medical Center/Albert Einstein College of Medicine, ⁴ Office of Community & Population Health, Montefiore Medical Center, ⁵ Department of Family and Social Medicine,

The project described was supported by the National Center for Advancing Translational Sciences (NCATS), National Institutes of Health, through CTSA award number (UM1TR004400, MPPs Drs. Jessica Kahn and Mimi Kim). The content is solely the responsibility of the authors and does not necessarily represent the official views of the NIH.



Dissemination

- CE Tracker presented as poster submission at the 2025 CTSA Fall Annual Meeting in October 2025 in Washington, DC.
- BRAID (Bridging Research, Accurate Information and Dialogue) model, a CE technique developed in the Einstein ICTR, presented at PACERS (Partners for the Advancement of Community Engaged Research) meeting in September 2025.
- Manuscript on CE Tracker will be submitted in 2026.
- Other manuscripts on CCC initiatives are in early planning stages and will include, but not be limited to, the: (1) 360 Community Evaluation tool, (2) research infrastructure building of social needs screening data.

Innovations and Unique Capabilities

- Aligning research needs with those of the community. Montefiore produces a Community Health Needs Assessment regularly, but we have not previously incorporated this into a toolkit for aligning research. The CHNA will be released in 2026, and we have the unique opportunity to catalyze new community-aligned research.
- Multiple Montefiore-Einstein Centers of Excellence have CE initiatives or programs. Increasing internal collaborations to align work across the institution is a major project to advance our goals.
- Institutional buy-in to lower barriers to CE research. Through our CE toolkit and through institutional regulatory, legal, and financial support, we are streamlining processes to ensure researchers can conduct CE research and compensate community members.
- In view of the following above unique opportunities, we are in the initial stages of developing a CE Working Group, CE Conference, and CE micro-grant program to sustain a community of CE researchers and community members.

CCC Strategic Plan

1. Increase CCC's scholarly output

- Automate tracking of CCC scholarly works
- Present CE Tracker at NCATS Fall Annual Meeting, PACERS, and ACTS
- Prioritize manuscript on CE Tracker
- Determine and prioritize planning of next manuscripts

2. Increase CCC's reach at Einstein

- Continue communication plan to large bodies of Einstein CTS and CE researchers, including Centers of Excellence (CFAR, MECCC)
- New Collaboration with BERD and HI and CHWI on social needs screening research initiatives
- Disseminate and collect data with CE Tracker
- Complete and disseminate community compensation guide
- New CE Working group
- New CE Conference
- New CE Micro-grant program

3. Increase CCC's investment in community

- Ongoing CAC feedback
- Community investment in CE Conference
- Citizen scientist curriculum dissemination
- TRUST workshops
- 360 Community Evaluations
- Research alignment with CHNA

Q & A

- **Measuring impact:** We focus on scholarly production and have implemented plans for community feedback through 360 evaluations.
Are there other areas of impact we should be focusing on and/or measuring?
- **Measuring impact:** Sometimes there are delays between project initiation and dissemination/scholarly output.
Are there intermediate metrics that can help us ascertain impact during projects?
- **Supporting junior faculty members:** A pressing concern is building capacity to sustain the pipeline of CE work. We have made plans to better sustain our network of potential mentors at Montefiore Einstein, including through a working group and a CE conference.
Are there other ways to think about building the pipeline for junior faculty?