



I CERTIFY THAT THESE DOCUMENTS WERE
PREPARED OR APPROVED BY ME, AND I AM A
DULY LICENSED ARCHITECT UNDER THE LAWS OF
THE STATE OF MARYLAND, LICENSE No. 19138,
EXPIRATION DATE 08.14.2019

DUNKIN'

dunkin'
brands.

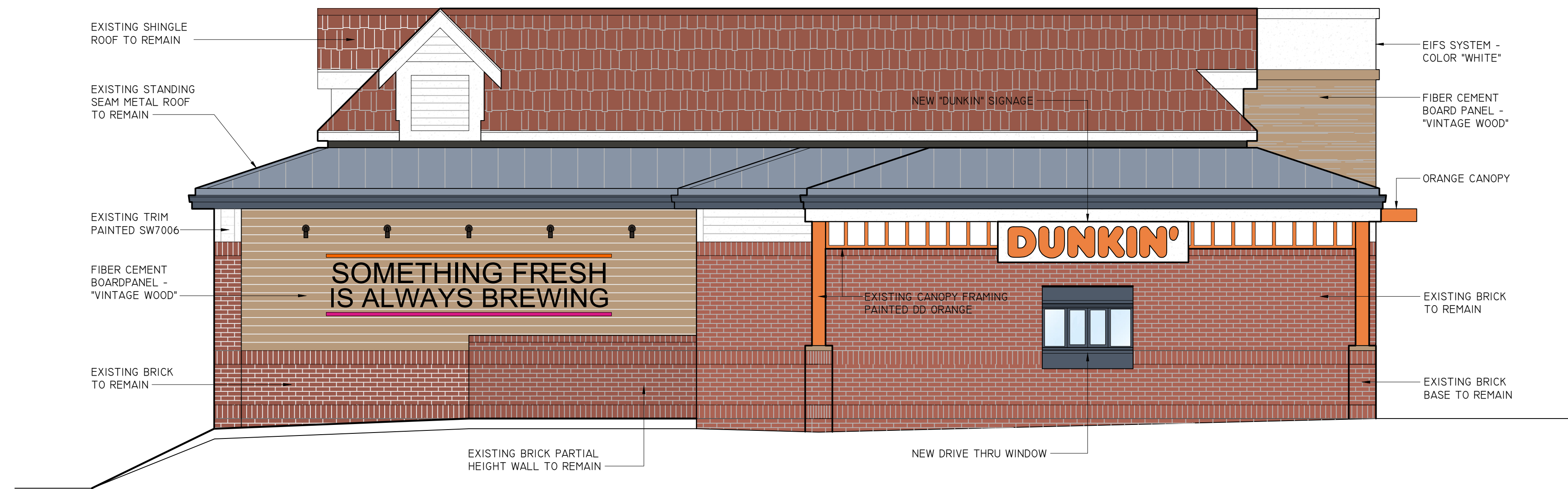
STORE #357632
ROBERT OLIVER PLACE
OAKLAND MILLS, MD

REVISION		
No.	DATE	DESCRIPTION
DWG DATE:	00-00-0000	
DRAWN BY:	STAFF	
PROJECT No.:	I8105	
DWG TITLE:		

EXTERIOR ELEVATIONS

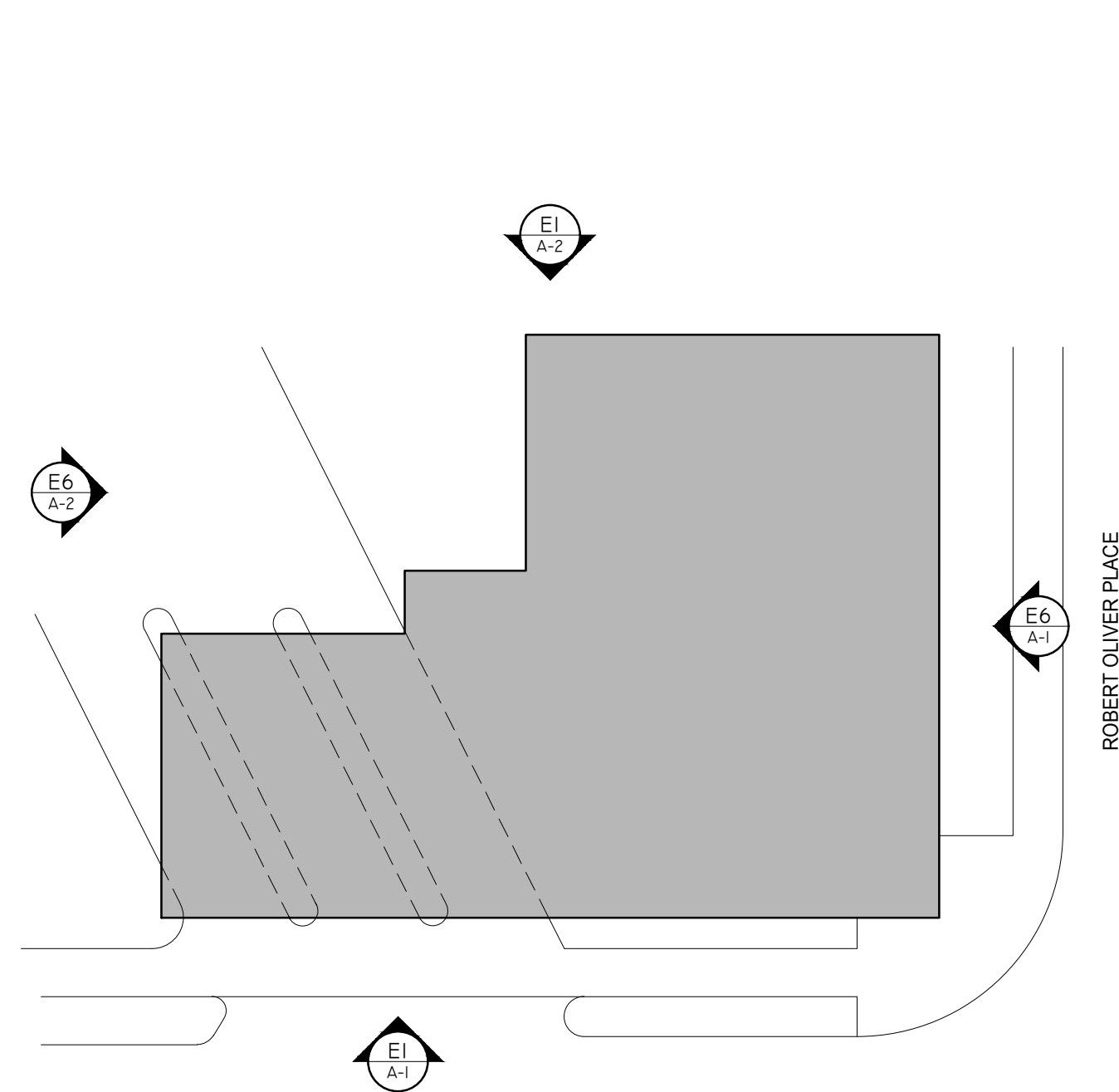
SHEET No. _____

A-2



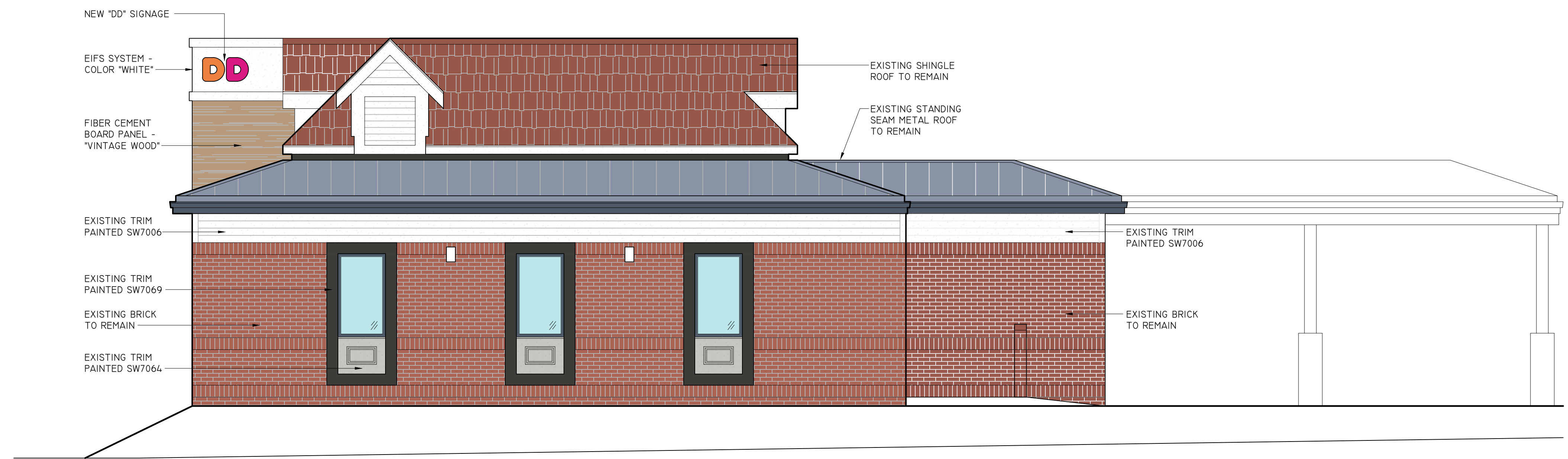
E6 EXTERIOR ELEVATION

SCALE: 1/4" = 1'-0"



A1 KEY PLAN

SCALE: 1/4" = 1'-0"



E1 EXTERIOR ELEVATION

SCALE: 1/4" = 1'-0"