



MENDOCINO COMPLEX INCIDENT UPDATE

Date: 8/14/2018 Time: 7:00 a.m.



@CALFIRE_MEU
@CALFIRE
@MendoSheriff
@LakeCoSheriffCA
@MendocinoNF



@CALFIREMEU
@CALFIRE
@MendocinoSheriff
@LakeSheriff
@MendocinoNF

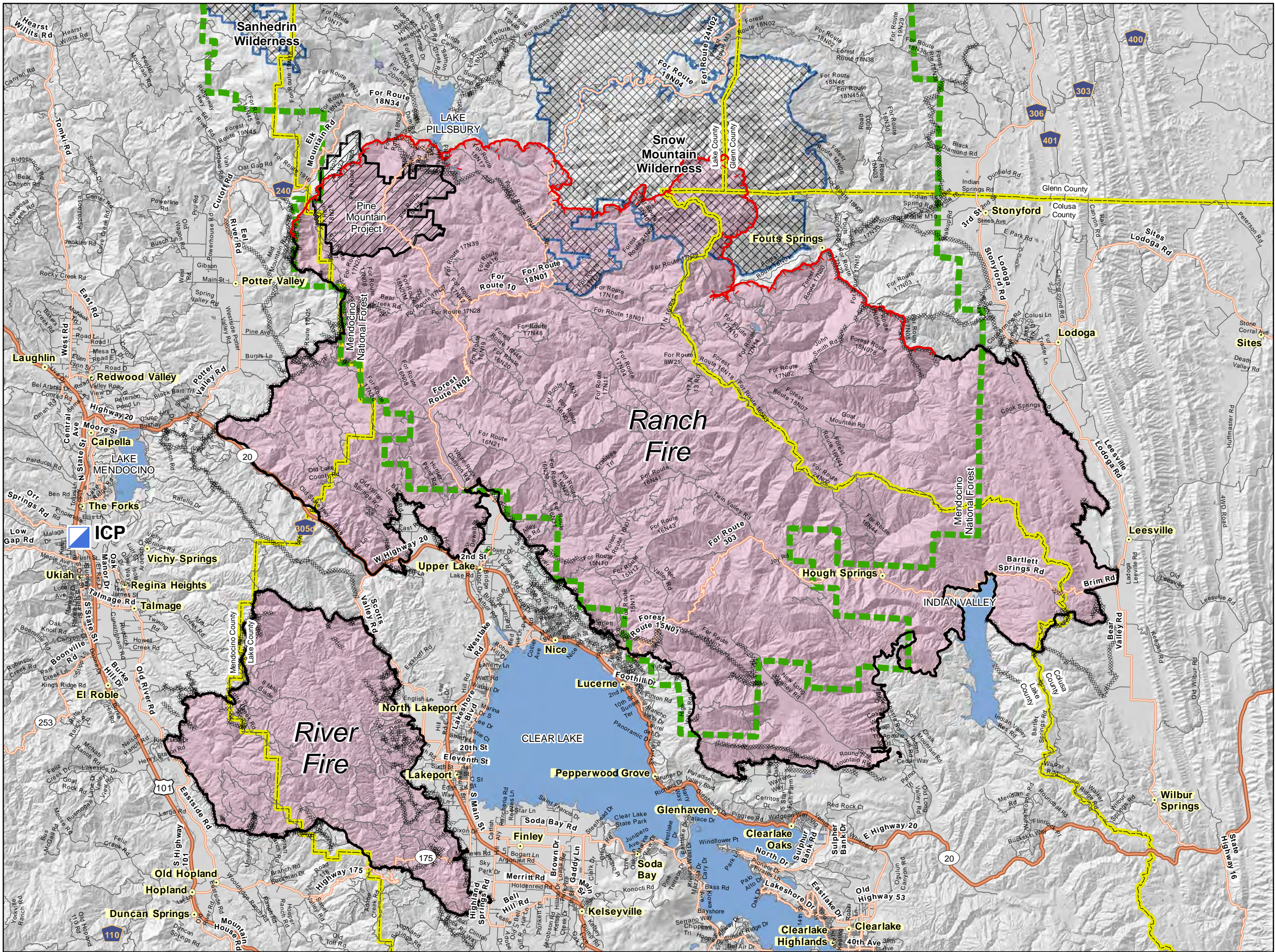
Public Information Line: 707-574-8261
Media Line: 707-574-8476
Email: MendoComplex2018@gmail.com
To sign up for incident updates:
www.tinyurl.com/mendo2018
Inciweb: <https://tinyurl.com/mendocomplexnf>

RANCH FIRE STATUS		RIVER FIRE STATUS	
Incident Start Date: 07/27/18	Incident Start Time: 12:03 PM	Incident Start Date: 07/27/18	Incident Start Time: 1:01 PM
Incident Type: Wildland Fire	Cause: Under Investigation	Incident Type: Wildland Fire	Cause: Under Investigation
Incident Location: SR CA-20 at MP 39, Old Lake County SR, Blue Lake, 8 mi NE of Ukiah		Incident Location: Old River Road, 6 miles north of Hopland	
Acreage: 314,925 acres	Containment: 64%	Acreage: 48,920 acres	Containment: 100%
MENDOCINO COMPLEX TOTALS			
CAL FIRE Unit: Mendocino Unit, Sonoma-Lake-Napa Unit			
Unified Command Agencies: CAL FIRE, U.S. Forest Service			
Total Acreage: 363,845 acres	Total Containment: 64%	Expected Full Containment: 09/01/18	
Civilian Injuries/Fatalities: None		Firefighter Injuries: 2	Firefighter Fatalities: 1
Structures Threatened: 1,025	Structures Destroyed: 147 residences / 118 other		Structures Damaged: 13 residences / 23 other
CURRENT SITUATION SUMMARY			
<p>The Ranch Fire continues to threaten the Mendocino National Forest as well as communities that reside north of the fire perimeter. Throughout the night, the Ranch Fire progressed north, steep and rugged terrain, dry fuel, and hot weather continue to challenge suppression efforts. Overnight fire crews constructed control lines and implemented new dozer lines, tying together preexisting containment barriers. Crews continued structure preparation and defense in the communities threatened by the Ranch Fire. Today operations will focus on the northwest and northeast edges of the Ranch Fire, while continuing to develop strategic plans to slow the northern push towards Lake Pillsbury. The south side of the fire has had no significant events and remains in suppression repair and patrol status.</p> <p>The River Fire had no movement. Suppression repair along with patrol will continue on the River Fire.</p>			
CURRENT SITUATION			
Mandatory Evacuations:	Lake County: <ul style="list-style-type: none">East of the Lake-Mendocino County Line, south of the Lake-Mendocino- Glenn County Line, west of the Lake- Colusa County Line, north of the fire perimeter and the Mendocino National Forest boundary.	Mendocino County: <ul style="list-style-type: none">South of Eel River, west of the Mendocino- Lake county line, east of 10500 block of Mid Mountain Road, and north of Pine Ave. Does not include residents on Pine Ave.	Colusa County: <ul style="list-style-type: none">Town limits of Stonyford, west to the Colusa-Lake County line and north to Colusa-Glenn County Line, Century Ranch sub-division east and west side of East Park Reservoir.
			Glenn County: <ul style="list-style-type: none">Mendocino National Forest boundary west to the Lake County line, south to the Colusa County line and north to Forest Road 20N07 also known as County Road 308.
Evacuation Advisory/Warning:	Mendocino County Evacuation Warning: <ul style="list-style-type: none">Mendocino County north of Mid Mountain Road, south of the Eel River, west of the 10500 Block of Mid Mountain Road, and east of East Potters Valley/Eel River Roads.The Bureau of Land Management closure of the Cow Mountain Recreation Area remains in effect.		Glenn County Evacuation Advisory: <ul style="list-style-type: none">North of the Glenn County/Colusa County Line, west of County Road 306, south of County Road 308, east of the Mendocino National Forest Boundary.

Road Closures:	Mendocino County: <ul style="list-style-type: none">• Eastbound Eel River Road at County Road M6 (20N01)• Eastbound Mid Mountain Road at 11756 Mid Mountain Road Lake County: <ul style="list-style-type: none">• Northbound Elk Mountain at Middle Creek Campground• Northbound Bartlett Springs Road at SR-20 Glenn County: <ul style="list-style-type: none">• Forest Road 20N07 Road at forest boundary• Forest Road 18N38 Road at the forest boundary• Black Diamond Road at the Forest Boundary	Colusa County: <ul style="list-style-type: none">• Westbound Brim Road at Bear Valley to the County Line• Westbound Cook Springs Road at Leesville Lodoga Road• Westbound Fouts Springs Road at the Forest Boundary• Westbound Goat Mountain Road from Lodoga-Stonyford Road to the end.• Southbound Ladoga-Stonyford Road to Colusa-Glenn County line• Northbound Ladoga Stonyford at Leesville Ladoga and Site Ladoda				
Animal Evac. Center(s):	Redwood Riders Arena , 8300 East Road, Redwood Valley is accepting horses. Animal Care , 298 Plant Road, Ukiah is accepting small animals					
ASSIGNED RESOURCES						
Engines: 254	Water Tenders: 84	Helicopters: 33	Hand Crews: 59	Dozers: 72	Other: 7	Total Personnel: 3487
Numerous firefighting air tankers from throughout the Western United State are flying fire suppression missions as conditions allow.						
Cooperating Agencies: Potter Valley Fire, Redwood Valley Fire, Ukiah Fire, California Office of Emergency Services, California Department of Corrections and Rehabilitation, California SR Patrol, Lake County Sheriff's Office, Mendocino County Sheriff's Office, Colusa County Sheriff's Office, Glenn County Sheriff's Office, California Highway Patrol, Australia and New Zealand Fire, Bureau of Land Management, Hopland Fire, Lakeport Fire, PG&E, AT&T, California Conservation Corps, and additional agencies from throughout California and other States.						

To learn more about wildfire preparedness visit:

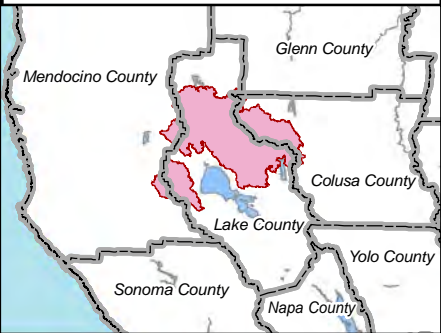
www.readyforwildfire.org



PUBLIC INFORMATION MAP

**Mendocino Complex
CA-MEU-008674
August 15, 2018
For Information Call
(707) 574-8261**

- Incident Command Post
- Uncontrolled Fire Edge
- Completed Line
- Completed Dozer Line
- USDA Forest Service
- County Boundary
- Pine Mountain Project
- Wilderness Area
- Fire Perimeter



Miles
0 1.75 3.5 7

1:225,000
Datum: NAD 83

DISCLAIMER:
The displayed incident data is approximate and should only be used for informational purposes. The information contained in supporting base layers was generated from GIS data maintained by different

MT2 GIS
August 14, 2018
2204 hrs