



ASCEND
A MAXIMUS COMPANY

Maine Assessing Services Agency Introduction — Meet the Team

Who We Are

- + Headquartered in Reston, Virginia;
 - Based in Franklin, Tennessee
 - 250 Employees across the country
 - Network of 500+ independent contractor clinicians and physicians

+ Services Provided

- Conflict-free clinical assessment services
- Customized data systems and clinical algorithms
- Intense focus on clinical quality – produce highly defensible outcomes



Vice President: Christa Ballew

- Over 20 years of program administration and management experience in health and human services.
- Responsible for overall compliance and service delivery.
- Responsible for the supervision of Operations Directors and teams to ensure operational efficiency, effectiveness, and staff productivity.



Operations Director: Andrea Womack



- Over 12 years of experience in LTSS and PASRR program design, implementation, operations, and quality measurement.
- Oversees implementation and daily operations for multiple state projects, helping states to achieve LTSS goals, PASRR compliance, and implement practices that make a difference for individuals with disabilities.
- Designed and implemented quality protocols for multiple states to ensure compliance with state and federal LTSS/PASRR requirements, clinical integrity, and person-centered assessments.
- Serves as a consultant for the PASRR Technical Assistance Center and is board chair for the National Association of PASRR Professionals.

Program Director: Doug Palmer

- Master's level Rehabilitation Counselor
- 20+ years' experience include private practitioner in counseling, disability management, leave administration, and forensic vocational evaluations
- Experience working with individuals, employers, insurance companies, and the federal government



Operations Supervisor: Gwen Watkins



- Operations Supervisor responsible for training and oversight of the Intake Staff
- Has been working with the Assessing Service Program since its inception in 1994
- Has a wealth of knowledge with the referral process and the Maine programs.

Quality Supervisor: Laura Moody

- 16 years of experience in working with Maine ASA
- Has a comprehensive knowledge of the State of Maine Long Term Care program policies, medical eligibility determination using the state approved Medical Determination Form (MEDXX), and understanding of the MeCare system.



Backlog

Developing plan to address

- Received backlog data on 10/1/18
- Currently compiling and analyzing
- Working with OADS to solidify a plan to address and resolve in a timely manner

Maine ASA Programs

Long
Term
Care

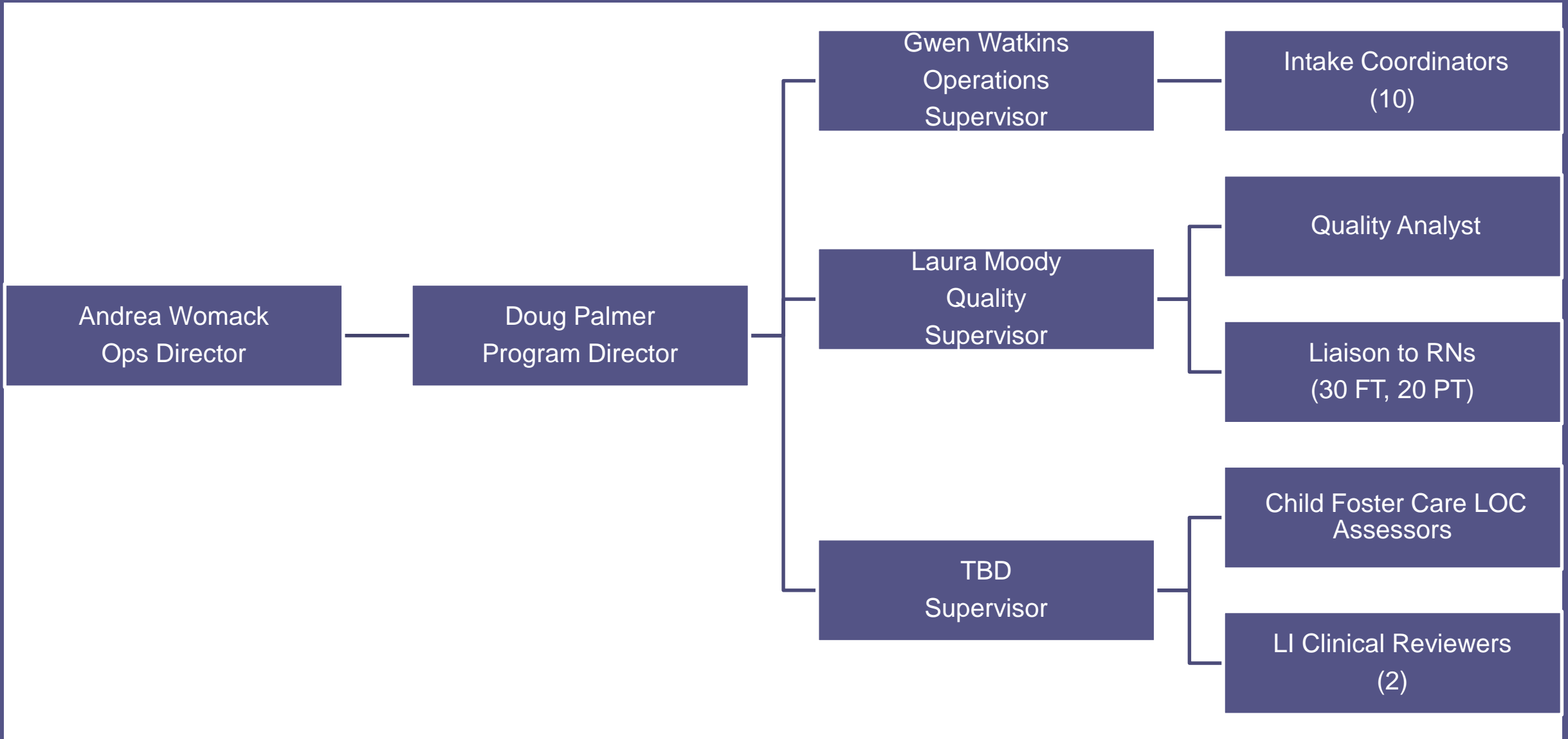
ABI

PASRR

ICF/IID
ORC

GPU

Maine Org Chart



Process, Technology, & Location



Process is essentially the same



Portable printers/scanners to support personal choice and timely dissemination of information



Secure email to minimize any potential HIPAA risks



Temporary offices in Tennessee—building space in Maine for in-state leadership and intake

Resources

MED Referral & PASRR—TBD



Included in all
communications
from MAXIMUS
Ascend



Can send with
emailed request



Will be posted on
our website soon
Available on
OADS site
currently

MAXIMUS Ascend Contact Information

Questions



Email

+ Ask-MaineASA@maximus.com

Referrals



Toll-Free Fax

+ 844.356.7500



Email

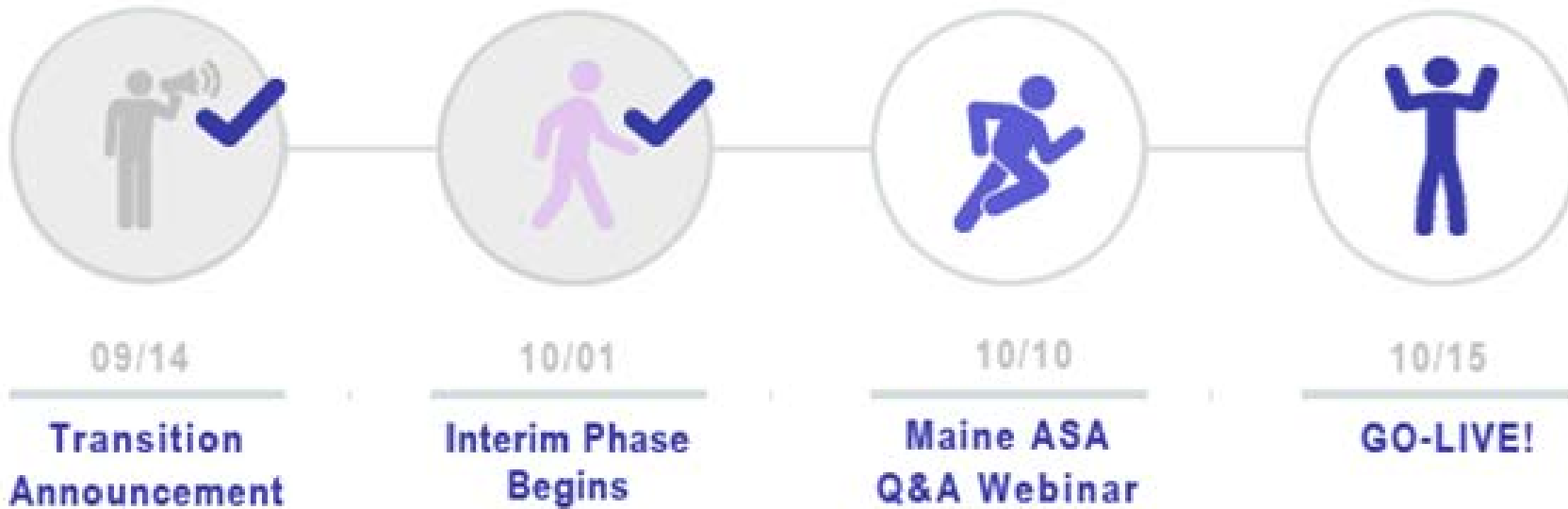
+ Maine-ASA@maximus.com



Toll-Free Phone

+ 833.525.5784

MAINE ASA TRANSITION ►►► PROGRESS TRACKER



Questions?