

Building Design

The Applicant has made revisions to the façades of the One Winnetka building. On the following pages are comparisons of the building facades between the July 2017 Final Plan and the Current Amended Final Plan. The following is a summary of the more significant changes to the building design elements:

- Residential windows at upper floor levels have been modified in size and proportions – July 2017 Final Plan’s larger number of window units has been replaced with a smaller number of window openings, in larger sizes;
- The Central building’s north elevation has been modified with narrower, more vertical architectural expression – formerly detailed as 5 wider townhome units, now detailed with 7 narrower townhomes;
- The West building’s north elevation has been extended, introducing solid masonry wall adjacent to the sidewalk and incorporating metal balconies at upper residential levels;
- Modification to building detailing including elimination of decorative circular windows, alteration of commercial storefront openings and elimination of some limestone detailing; and
- The East building’s east elevation has been modified due to the replacement of the previously proposed structured parking level with a surface parking lot.

See next page.



Figure 4- West Elevation - July 2017 Final Plan



Figure 5 - West Elevation - Current Amended Final Plan



Figure 6 - North Elevation - July 2017 Final Plan



Figure 7- North Elevation - Current Amended Final Plan



Figure 8- East Elevation - July 2017 Final Plan

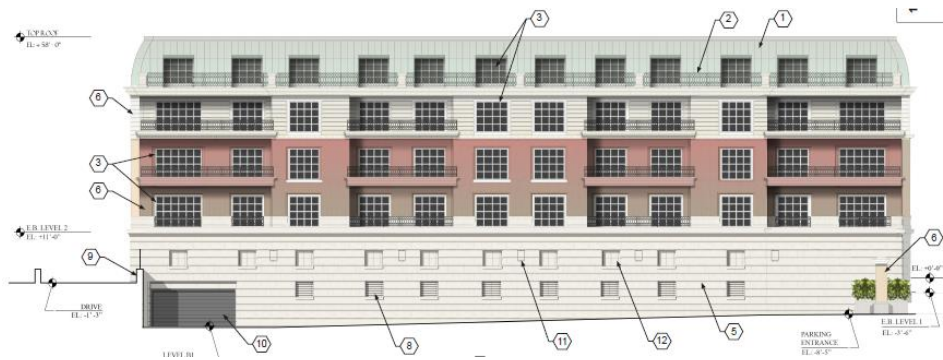


Figure 9 - East Elevation – Current Amended Final Plan



Figure 10 - South Elevation - July 2017 Final Plan



Figure 11 - South Elevation – Current Amended Final Plan