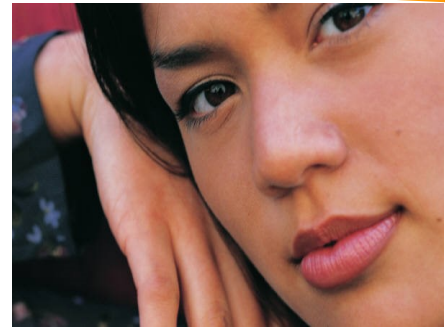


Pennsylvania School-Age Professional Credential On-Line 2017-2018



The Pennsylvania School-Age Professional Credential On-Line is a collaborated effort with the Regional Keys and Clarion University to have the credential accessible to all school-age providers throughout Pennsylvania. The Pennsylvania School-Age Credential On-Line articulates for three college credits with Clarion University.

The Pennsylvania School-Age Professional Credential is a competency based program modeled after the Child Development Associate (CDA). It provides individuals working in school-age programs the opportunity to examine their work in relation to the Pennsylvania School-Age Care Competency Standards.

Registration fee is \$130.00. This will cover the cost of the books and use of the on-line services. On-line classes will start when we have a cohort of 15 participants registered. Anticipate starting September 12, 2017 and completing the coursework by March 27, 2018. **The Course will meet on Tuesdays from 10-11:30 AM and there will be a do at your own pace weekly assignment that should take 1.50 Hours to complete.**

What are the steps?

1. Request the **Registration Form** from the Northwest Regional Key at 800-860-2281, ext. 132 Attn: Chuck Lytle
2. Begin taking required course work equivalent to 120 hours
3. Form and work with a team consisting of an advisor and parent.
4. Complete coursework
5. Complete Portfolio and Resource File
6. Apply for credential
7. Have an observational assessment, interview and review of Portfolio and Resource File
8. Upon satisfactory completion of all requirements credential is

What are the eligibility requirements?

- ⊙ Must be working in a Department of Human Service regulated program working with school-age children (5-12 years-old).
- ⊙ Must have a minimum of a high school diploma or GED credential.
- ⊙ Completed individual professional development plan
- ⊙ Must have worked at least 480 hours with school-age children in the past five years.

Assessment Fee: The assessment fee will be waived for up to 120 individuals (from across the state) meeting all credential requirements. Individuals will be responsible for paying a \$60.00 non-refundable processing fee.

Why complete the PA School-Age Professional Credential?

- ⊙ Examine his/her own work in relation to the Pennsylvania School-Age Care Competency Statement.
- ⊙ Get feedback and support from people who have experience working with school-age children and knowledge about school-age services.
- ⊙ Improve his/her knowledge and skills in ways that are satisfying for themselves and beneficial for children.
- ⊙ Plan their educational pathway through the use of the Pennsylvania Early Learning Keys to Quality career Lattice by identifying where they currently fit on the lattice and by identifying the position they are interested in attaining.
- ⊙ Earn a professional credential that is recognized throughout the Pennsylvania and the Keystone STARS Continuous Quality Improvement System.

For more information contact:



Chuck Lytle
Northwest Regional Key
3823 West 12th Street
Erie, PA 16505
800-860-2281 Ex. 132
chuckl@nwirkey.org