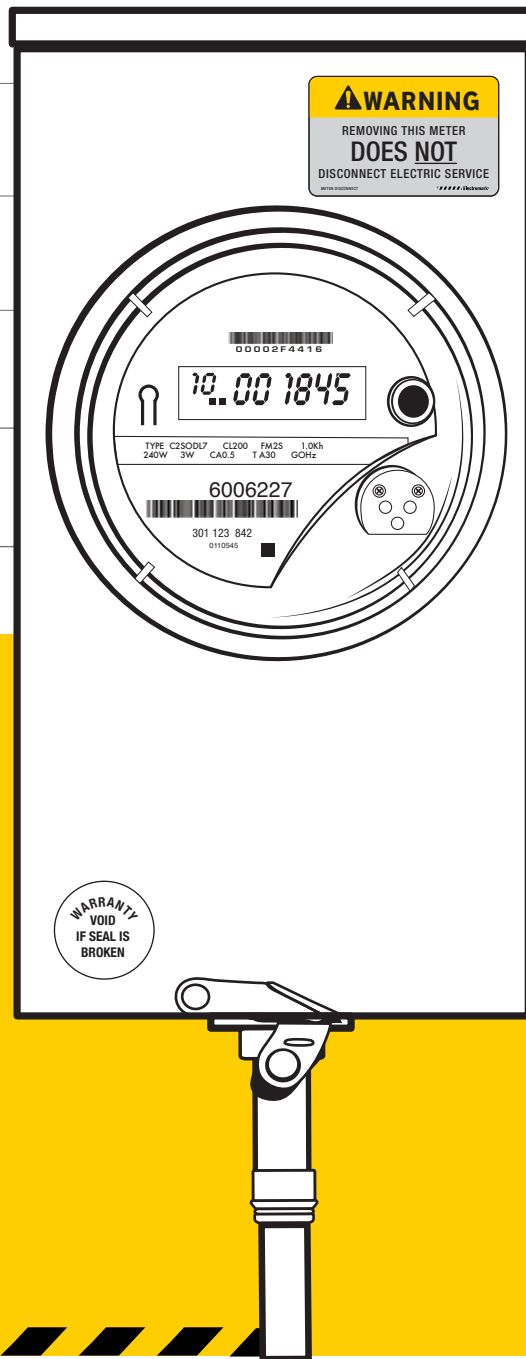


# METER MARKING SOLUTIONS



[www.electromark.com](http://www.electromark.com)

## Electromark®

Your Outdoor Identification Experts

# The ELECTROMARK EDGE

*Meter Marking Solutions*

## EXPERTISE

---

Our expertise comes from our experience. Forty years in outdoor identification has given us a deep understanding on the impact of proper identification. We are confident in our ability to customize, innovate and standardize solutions that fit your needs. With years of research, thorough testing and proven results, we know Electromark can deliver a reliable solution to you.

## TRUSTWORTHY SERVICE

---

When we say that we are “Your Outdoor Identification Experts”, we mean every word. Our job is to help you find a solution that alerts, protects and informs the community, contractors and employees. We do not push product, we provide solutions that will improve safety and the reliability of your services.

## QUALITY MATERIALS

---

Durability is the most important trait to look for in a material. Poorly suited material use can result in improper hazard awareness and end with someone getting seriously injured or killed. For this reason, we have scoured and continue to search the marketplace for the best utility-centric products and materials that hold up to demanding outdoor environments and meet or surpass relevant industry compliance requirements like, OSHA, ANSI, NEMA, UL, ISO, ASTM and CSA. We have led the marketplace in innovation and continue to showcase superior products.



## Regulation Compliance

Comply with OSHA and NESC by referencing relevant regulations and standards. (Pg. 3)

## Hazard Labels

Alert people to the dangers of tampering with meters with hazard labels. Make sure the label message is clear, concise and put on reliable long-lasting material. (Pg. 5)



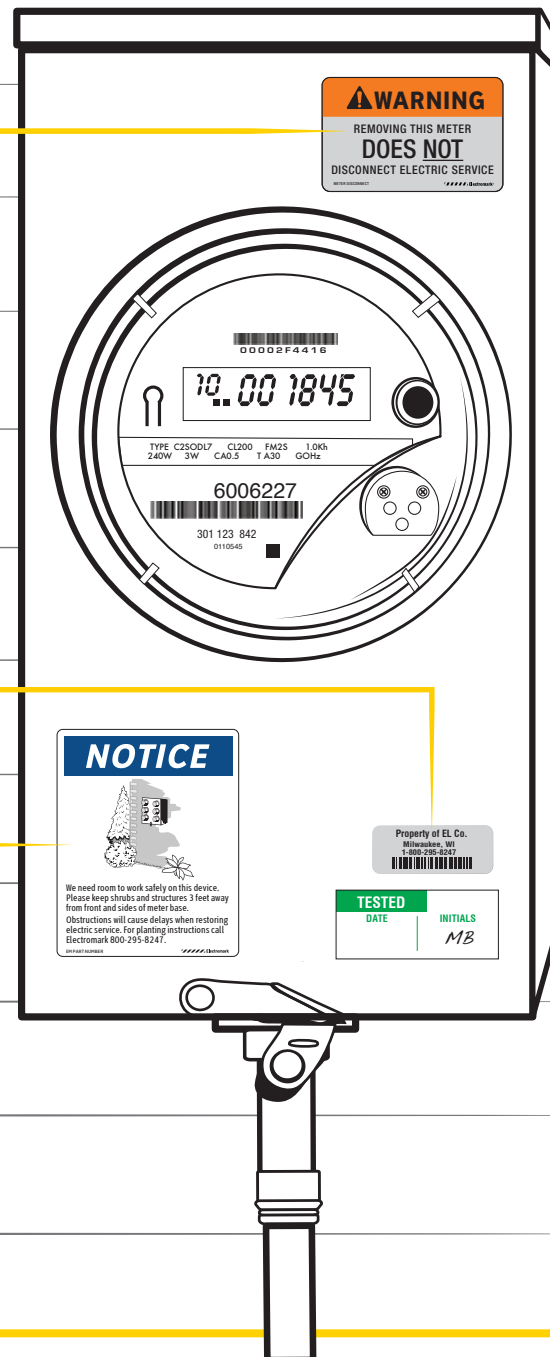
## Maintenance & Service Labels

Make it easier for contractors and employees to maintain and service meters by using labels that provide essential information for meter management. (Pg. 6-8)



## Asset ID

Keep track of your meters with asset identification. (Pg. 8)



# REGULATION COMPLIANCE




Meter Marking Solutions

## COMPLYING WITH OSHA

OSHA and ANSI specify that safety labels and signs must indicate and define specific hazards that, without identification, may lead to accidental injury to workers, customers or the general public. OSHA sign specifications are stated in standard 1910.145.

## COMPLYING WITH NESC

**Part: 4 Section: 41 Rule: 411 D** requires the use of the 2007 ANSI Z535 standard, the NESC is currently under revision for the 2017 edition. The new updates will include a requirement for a newer version of ANSI, Z535 2011 version.

 <b>DANGER</b>	 <b>WARNING</b>	 <b>CAUTION</b>	<b>NOTICE</b>	<b>EMERGENCY</b>
Use for imminent hazards which if not avoided, <b><u>will</u></b> result in death or serious injury (for extreme situations)	Use for potentially hazardous situation that if not avoided, <b><u>could</u></b> result in death or serious injury	Use in a potentially hazardous situation that <b><u>may</u></b> result in minor or moderate injury	Use to state company policy directly or indirectly related to the safety of personnel or protection of property. Do <b><u>not use</u></b> in place of a hazardous message	Use for general instructions relative to safe work practices or indicate the location of safety equipment. Do <b><u>not use</u></b> in place of a hazard label

## Why do labels fail?



### SUN AND RAIN DAMAGE

Over time labels can fade, chalk, crack and peel as a result of exposure to UV, weather cycles, road salt and more. The example on the left shows a weathered label that deteriorated over 8 years. Use materials that have a high UV resistance like Duracryl® and Engineer Grade.



### HEAT AGING

Less expensive vinyl films embrittle. The materials chosen for a meter need to be able to withstand higher heat thresholds and surface temperature fluctuations. Use material like polyester, Duracryl® and Engineer Grade reflective for better outdoor and color retention.



### APPLIED INCORRECTLY

Labels do not reach full adhesion to dirty, oxidized or rusty surfaces. Make sure to prepare the surface prior to applying the label to ensure it is securely adhered to the meter. When applying the label, use the label liner to avoid touching the adhesive thus, preserving the tackiness of the label.



### TAMPER EVIDENT

Meters are subject to vandalism where people may try to pick at or remove labels from equipment. Choose a frangible material that comes off in tiny fragments and makes removal a difficult, tedious process.

# HAZARD LABELS

Meter Marking Solutions

## Good, Better, Best for Meter Marking Labels

APPLICATION	GOOD	GOOD	BETTER	BEST
Meter Marking	Acrylic	Polyester	Cast Vinyl	Duracryl®
Pros	<ul style="list-style-type: none"><li>• Tamper resistant material</li><li>• Cost-effective solution</li></ul>	<ul style="list-style-type: none"><li>• Chemical and dirt resistance</li><li>• Superior tear resistant</li><li>• High heat resistance (350 degrees)</li></ul>	<ul style="list-style-type: none"><li>• Very good UV resistance</li><li>• Moderate to excellent tear resistance</li><li>• Available in multiple colors</li></ul>	<ul style="list-style-type: none"><li>• Excellent UV resistance</li><li>• Tamper resistant material</li><li>• Longer warranty relative to other materials</li></ul>
Cons	<ul style="list-style-type: none"><li>• Poor to fair UV resistance</li></ul>	<ul style="list-style-type: none"><li>• Moderate UV resistance compared to other materials</li></ul>	<ul style="list-style-type: none"><li>• Poor resistance to high heat</li><li>• Premium cost</li></ul>	<ul style="list-style-type: none"><li>• Poor chemical resistance</li></ul>
Warranted Durability	5 years	7 years with laminate	10 years with laminate	12 years

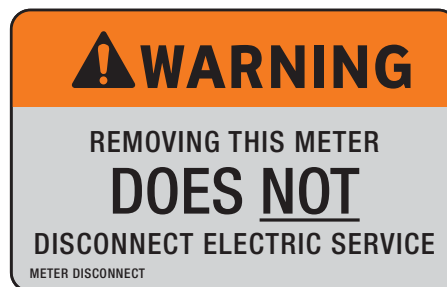


## METER HAZARD LABELS

Post a meter hazard label on each socketed device to prevent an incident during the maintenance or use of a meter. Choose our 2" x 2" 6-mil Duracryl® stock label or customize the label with your company logo and phone number.

## METER DISCONNECT LABELS

Alert contractors, customers and even utility workers to protect themselves around disconnected meter infrastructure. Stock meter disconnect labels are 2.5" x 4" and made with 2mil Duracryl®. Meter disconnect labels can be made with retro-reflective materials. Customize the label by adding your logo, or adjusting the legend.





## SHRUB MANAGEMENT LABELS

Residential customers will often try to hide or disguise meters with shrubs or other plants. While covering or hiding a meter is more aesthetically pleasing for the customer, it creates access issues for maintenance and delays servicing the equipment. Educate customers about meter entry and work-space needs with shrub management labels.

## TAMPER-EVIDENT METER LABELS

Strongly caution that meter tampering is unlawful. Extremely frangible meter-warning labels resist defacing and “self-destruct” upon attempted removal. Choose from a standard legend or create a custom one by adding your company contact information. Labels are 1.25” x 1.25” and are sold in sets of 10.



## SECURITY SEALS

Apply seals across latches, locking nuts and screens to show evidence of attempted entry. Security seals are made from 2-mil destructible vinyl material. Destructive vinyl breaks into small pieces when removal is attempted to show evidence of tampering.



# MAINTENANCE & SERVICE LABELS

Meter Marking Solutions



## CUSTOM METER LABELS

Tailor your message to your customers and employees with custom meter labels. Provide your size, material and message preferences we will handle the rest.

## INSPECT & CALIBRATION LABELS

Inspect and document the ID inventory, repair status, shelf life dates and more with write-on inspection labels. Note the information on our easy to write on polyester labels, then protect your writing from any smudges or fading with a self-laminating flap. Standard size labels are sold in a pack of 350 labels, larger labels are sold in a pack of 250 labels.



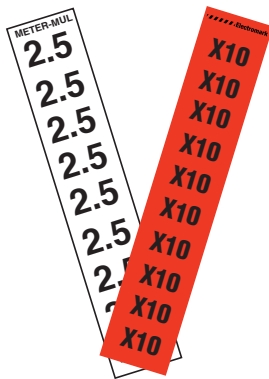
## MEDICAL ALERT MARKER LABELS

Prevent the accidental shut-off of life-sustaining medical equipment like respirators, infant monitors or kidney dialysis machines with our medical alert markers. Labels can be posted on meters, switches and transformers. The medical alert marker labels are made out of 6-mil Duracryl®. Standard colors come in green on a white background or red on a white background.



## METER OWNERSHIP MARKERS

Utilities, homeowners and businesses can all own meter sockets, distinguish ownership with a standard or custom label. Standard labels come in our Engineer Grade retro-reflective material. Other custom markers come in different grades of reflectivity or more rigid materials like fiberglass and polyester tags. Tags come with a self-laminating flap to accommodate a custom legend for on the spot creation.



## METER MULTIPLIER LABELS

When a meter only registers a portion of the customer's kilowatt-hours (kWh), identify the meter multiplier number to allow for proper calculation of the full kWh used. Avoid handwritten errors by using pre-printed stick on labels to ensure legibility and to maintain a professional look. Multiplier labels are made out of 3-mil polyester with .5" x 1" dimension. Labels are sold 10 per pack.

## ASSET ID

For the most durable asset identification label, use Metalphoto. Metalphoto is UV, chemical and abrasion resistant. Keep track of your assets through a number sequence unique to your business, request barcodes and QR codes for future asset management plans.



# Your Meter Marking Experts

Over 45 years of utility industry knowledge enables us to deliver durable, reliable, standard and custom meter solutions. Electromark's Meter Marking Solutions booklet includes a variety of products that come custom or standard:

- Hazard meter labels
- Maintenance meter labels
- Asset ID

Need help making a decision? We'll evaluate your needs and guide you to a solution that will work for you.

Call us with any questions or orders and we'll be happy to help! For more marking solutions visit us at [www.electromark.com](http://www.electromark.com).

Electromark

P) 800-295-8247

E) [customerservice@electromark.com](mailto:customerservice@electromark.com)

6555 W. Good Hope Rd. Milwaukee, WI 53223



Y4241959

**Electromark®**



Your Outdoor Identification Experts