

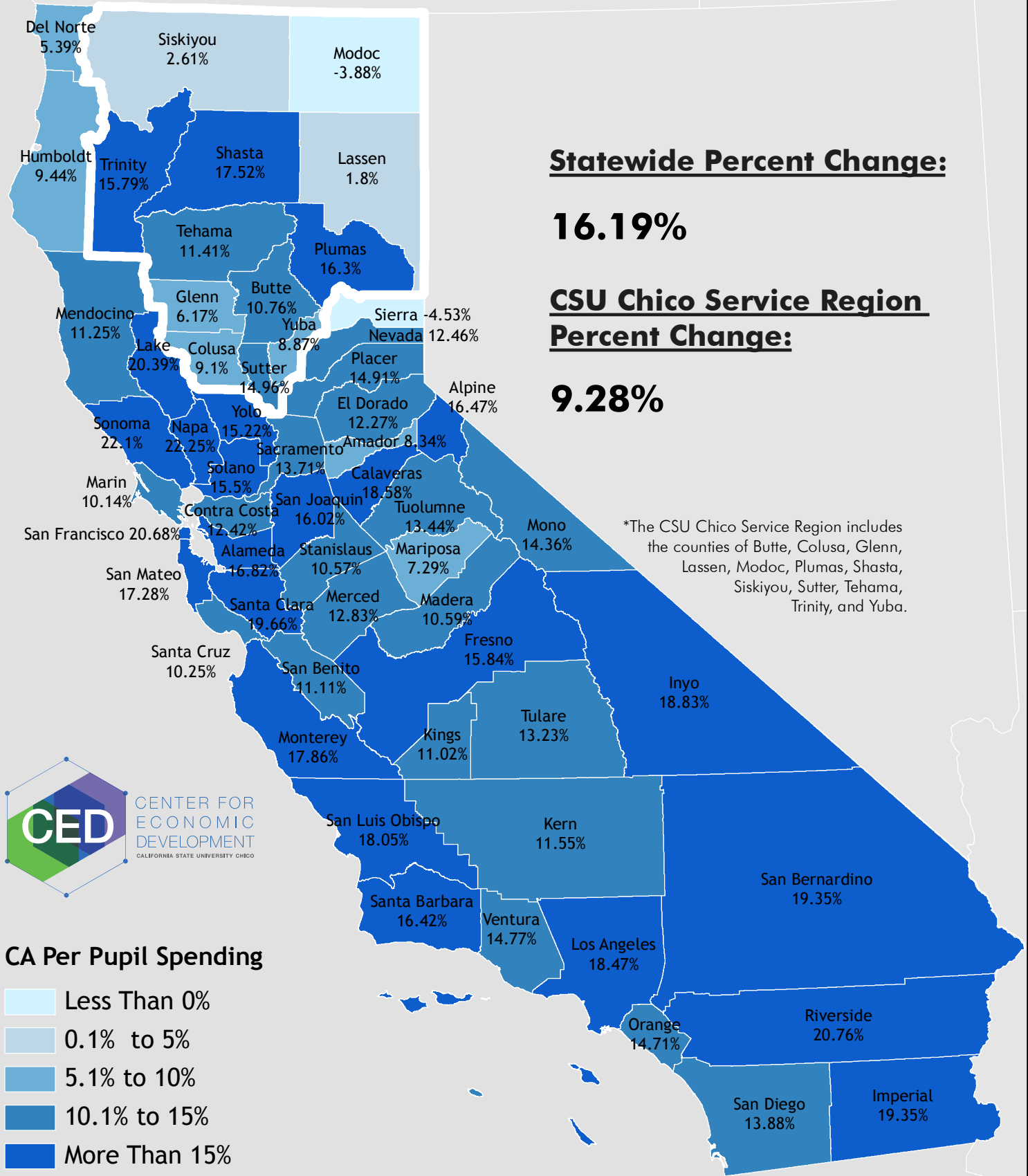
California Per Pupil Spending Percent Change 2006 - 2016

Statewide Percent Change:

16.19%

CSU Chico Service Region Percent Change:

9.28%



*The CSU Chico Service Region includes the counties of Butte, Colusa, Glenn, Lassen, Modoc, Plumas, Shasta, Siskiyou, Sutter, Tehama, Trinity, and Yuba.



CA Per Pupil Spending

- Less Than 0%
- 0.1% to 5%
- 5.1% to 10%
- 10.1% to 15%
- More Than 15%

Source:

California Department of Education

