



3

Fresh Updates

Remodel Me Today

TWENTY-YEAR-OLD CABINETS were falling apart — it was time to remodel the kitchen in this Olmsted Falls home, which features an appealing view of a large pond. The thing is that view was largely blocked from the kitchen because of a wall that separated the space from the adjoining morning room. And, the nearby living room had a non-working fireplace that needed fixing and updating.

“They wanted to improve the whole main entertaining area of the house,” says Brian Pauley, owner of Remodel Me Today.

The project began in the kitchen, addressing cabinets and finishes. Existing white melamine, 36-inch cabinets were replaced with taller 54-inch wall cabinets that are white with a glaze wash. The top doors are outfitted with glass and lit to showcase the owner’s water pitcher collection.

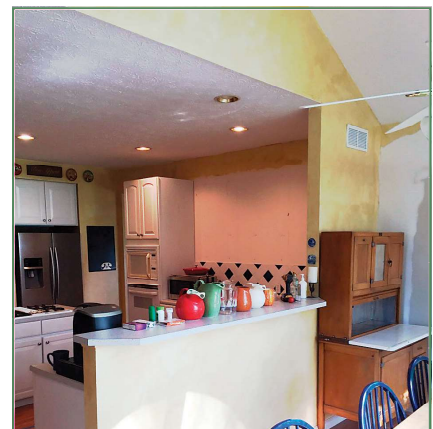
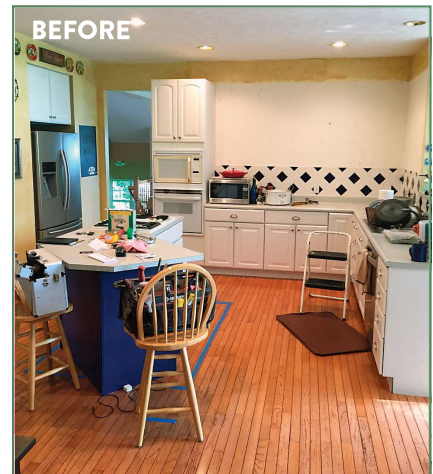
Laminate countertops were traded for quartz, with a dark color in the main kitchen (complementing the white cabinets), and a light quartz on the new island, where cabinets

were stained a dark walnut and made of knotty wood for a rustic effect. “This gives your eye direction and creates some contrast,” Pauley says.

An older 30-inch island-top stove was replaced with a 48-inch dual oven with a griddle — commercial-grade quality. Meanwhile, the team removed the wall behind the kitchen sink and placed a bar-height coffee/wine service space on the opposite side, in the morning room. “This gave enough of a raised area for a sink backsplash, but it opened up the views of the pond,” Pauley says.

As for the fireplace wall in the living room, the area was reconfigured. “The fireplace was flush with the wall, so we brought it out about a foot and a half to give the mantel more weight,” Pauley says. The mantel is wood with a live edge, and porcelain tile was applied on the floor. Cabinets flank the fireplace.

As with any project, there are always challenges when you open up walls and discover what’s behind the scenes. “We did find some electrical issues we needed to correct,”



Pauley relates.

The finished kitchen/living entertainment space now gives the couple a functional area with character where they can cook and entertain. Pauley says, “The homeowner is a baker, and they actually like to cook a lot.” Now, the space is suited just for that, and more.

— KH

NUTS & BOLTS

HOME ADDRESS:

9139 Lakeview Drive,
 Olmsted Falls

CONTRACTOR INFORMATION:

Remodel Me Today,
 25564 Bagley Road,
 Olmsted Falls,
 440-249-7665,
 remodelmetoday.com

PROJECT FOCUS:

Kitchen, Fireplace and
 Bathroom

