

Transhumant Pastoralism in Africa's Sudano-Sahel: Emerging Challenges for Human and Wildlife Security

*USFWS Informational Meeting
Falls Church, VA*

October 4, 2017



Credit: Matt Muir / USFWS

Transnational transhumance: Long-distance migration of pastoralists and their cattle across national boundaries in order to exploit seasonally available pastures and water.

In Africa's Sudano-Sahel¹, transnational transhumance has by and large been ignored by the international community as a priority conservation and security concern. Challenges regarding pastoralism are not new here; however, ongoing instability has amplified conflict dynamics pertaining to natural resource access across much of the landscape, including ethnic conflict in Nigeria and Central African Republic (CAR), anti-government insurgencies in Mali and Burkina Faso, and undefined/unenforced land tenure rights in northeastern Democratic Republic of the Congo (DRC). This has fueled abrupt and abnormal herd movements, resulting in increased threats to the region's network of protected areas, their resident wildlife, and rural resource-dependent communities, including pastoralists.

The U.S. Fish & Wildlife Service (USFWS) has supported projects in the Sudano-Sahel since 1990, and from 2003 to 2016, seventeen of these projects, funded through the Africa Regional Program, African Elephant Conservation Fund, and Great Ape Conservation Fund, have identified emerging challenges related to transhumant pastoralism (see included Issue Brief for a detailed list). USFWS has organized a meeting to discuss this topic with U.S. Government (USG) and civil society partners to improve a shared understanding of transnational transhumance and its impacts on conservation and security dynamics in the Sudano-Sahel, with a focus on countries including CAR, DRC, South Sudan, Cameroon, Chad, Nigeria, Niger, Mali, and Senegal. Workshop activities will additionally support preparation for future meetings and discussions on this topic among conservation, security, and development organizations.

¹ The Sudano-Sahel is a distinct ecological zone comprised of savanna and savanna-forest transition habitat that spans approximately 7.7 million km² across predominately West and Central Africa and parts of North and East Africa between 5° and 20° N Latitude (see map on reverse).

Meeting Overview

The primary purpose of this meeting is for USFWS and its partners to better understand the interconnected conservation and security challenges associated with transnational transhumance in the Sudano-Sahel and identify action items to support existing field activities and future meetings regarding this topic, through achievement of the following objectives:

- **Objective 1:**

Meeting participants have new awareness and/or a deeper understanding of the coupled conservation and security challenges regarding transnational transhumance in the Sudano-Sahel, raising the profile of this issue within conservation, security, and development sectors and fostering new collaborations.

- **Objective 2:**

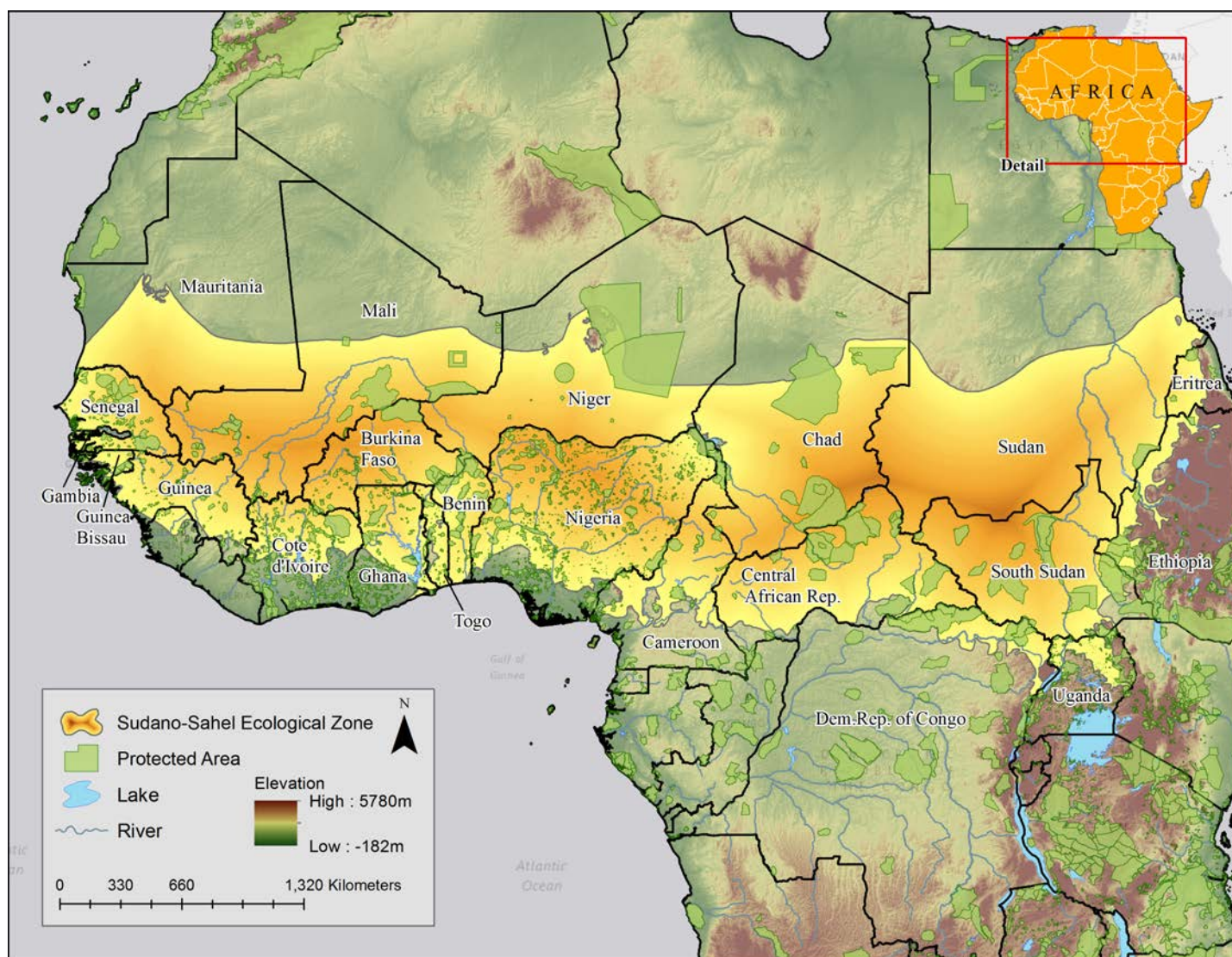
Meeting participants draft a list of unanswered questions pertaining to transnational transhumance and identify data streams necessary to answer those questions.

This event will consist of two sessions. The first is open to the public and will include brief presentations by a panel of experts working on issues related to transhumant pastoralism in the Sudano-Sahel, providing a unique opportunity to hear updates from the field and a better understanding of transnational transhumance and its role in conservation and conflict dynamics in the region. The second session will continue discussion among invited USG and civil society partners.

The meeting will seek to produce a series of outputs, including a summary report for invited guests and a formal launch of the provided issue brief, updated with feedback received from the meeting participants.

Wednesday, October 4, 2017 - Meeting Agenda

9:00 AM – 9:30 AM	Coffee and snacks
9:30 AM – 9:45 AM	OPENING AND INTRODUCTIONS (Public Session) - <i>U.S. Fish & Wildlife Service</i>
9:45 AM – 12:30 PM	TRANSNATIONAL TRANSHUMANCE IN THE SUDANO-SAHEL: OBSERVATIONS FROM THE FIELD (Public Session) - <i>EXPERT PANEL: 8 presentations (15 mins each); Q&A/panel discussion and public session closing remarks (45 min)</i>
12:30 PM – 1:30 PM	Lunch Break (note: End of Public Session. Invited Session resumes after break.)
1:30 PM – 3:00 PM	TRANSNATIONAL TRANSHUMANCE IN THE SUDANO-SAHEL: IMPLICATIONS FOR CONSERVATION AND SECURITY (Invited Guest Session) - <i>Facilitated discussion between invited guests, including expert panel.</i>
3:00 PM – 3:15 PM	Closing remarks - <i>U.S. Fish & Wildlife Service</i>
3:15 PM – 5:00 PM	Meeting space provided for continued small group and one-on-one breakout discussions
6:00 PM	Optional dinner (restaurant TBD)



Map: Sudano-Sahel Region. Credit: Matthew Luizza / USFWS

For more information and to RSVP, please contact Matthew Luizza at Matthew.Luizza@fws.gov.



U.S. Fish & Wildlife Service
International Affairs
<http://www.fws.gov/international>



@USFWSIntl



USFWS_International Affairs