



City Center

**RSVP by  
March 17, 2017**

Click [HERE](#) to register  
Please note, if you RSVP  
and do not attend, you  
will be invoiced by IIDA  
Carolinas Chapter for  
the cost of the food.

### Cost:

Free for students and members.  
Nonmembers \$20.00

### Directions:

Please visit  
[www.maps.google.com](http://www.maps.google.com)

### Note:

Please let us know if your contact  
information is incorrect. Email our  
Chapter VP of Communications at  
[communications@iida-carolinas.org](mailto:communications@iida-carolinas.org).  
Members are responsible for  
updating any changes in information  
with IIDA International in Chicago via  
the website, [www.iida.org](http://www.iida.org) or by  
calling (888)799-4432

### Special Assistance:

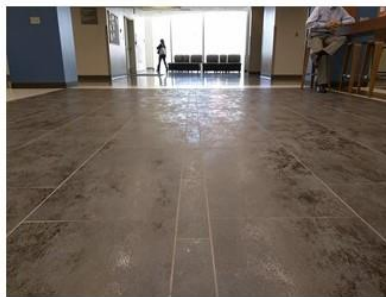
Anyone needing special assistance for this event  
should contact Lisa Ellis at 919.606.6639 or  
[iida.nctriangle@gmail.com](mailto:iida.nctriangle@gmail.com)

## Thin Porcelain CEU

### Mosaic Home Interiors Design Center

2641 Noblin Road | Raleigh, NC 27604

Tuesday | March 21, 2017 | 5:30p – 7:00p



Join the IIDA Triangle City Center for the evolution of porcelain tile CEU presented by keynote speaker, Joe Berman with Crossville Tile. Porcelain has changed dramatically including, technology, formats and application usage. In this CEU, we will provide in depth information required for successfully specifying thin porcelain as a material finish. This course will provide the participant detailed information on the current codes and regulations and will also examine the environmental impacts as it relates to sustainability and occupant health. Chip O'Rear with Custom Building products will provide an installation demonstration and Q&A regarding a variety of installation methods.

This CEU is AIA and IDCEC approved

Thank you to our sponsors for making this event possible!



THE ULTIMATE  
FLOORING EXPERIENCE

shaw contract®

Johnsonite Tandus Centiva DESCO

Thank you to Milliken, our Diamond Benefactor, and to our Platinum Benefactors, Tarkett & Shaw Contract and to all our Chapter Benefactors who support IIDA throughout the year.

