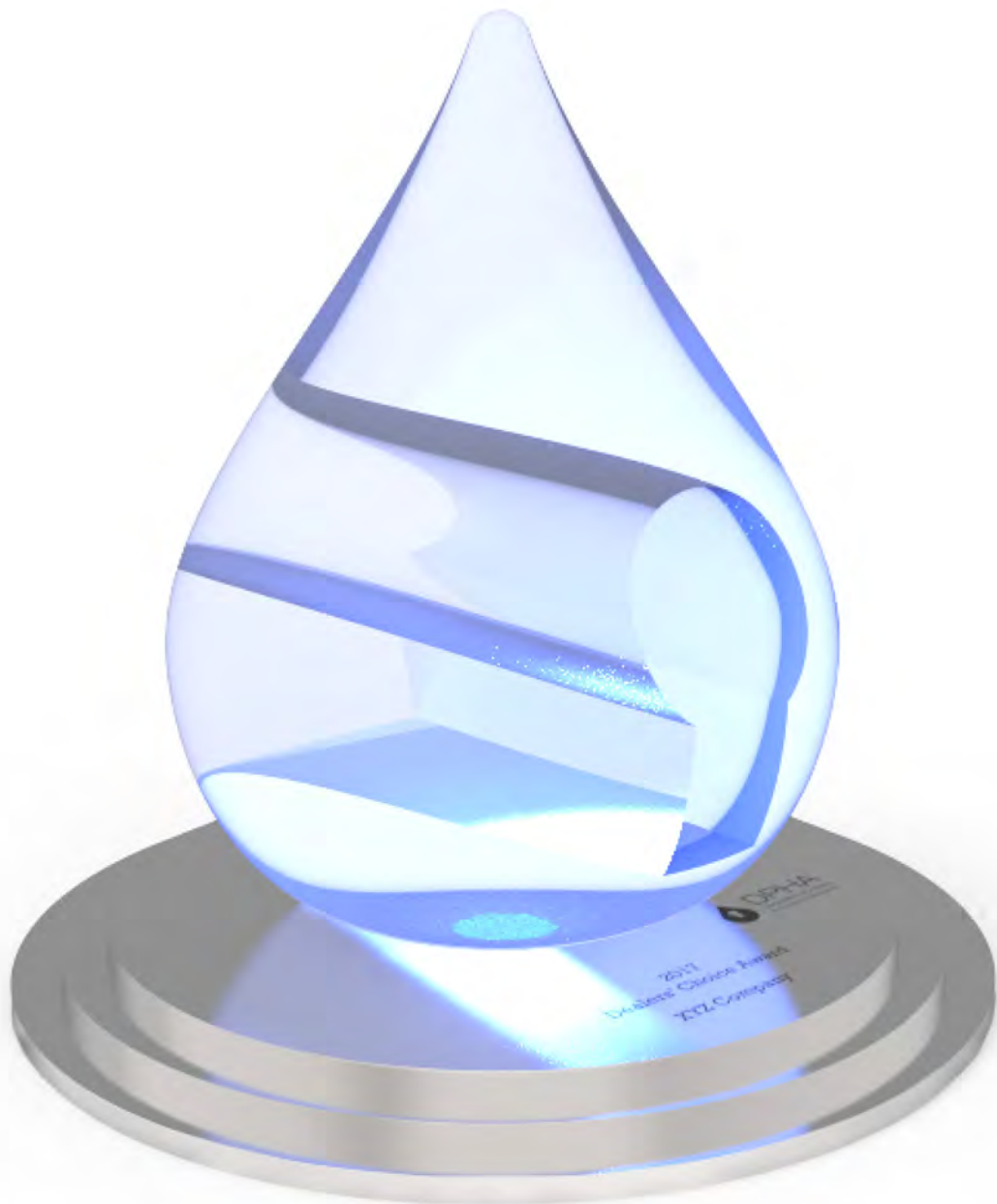




2018

DPHA Product of the Year Guide





2018 DPHA Product of the Year Guide

DPHA recognizes the outstanding efforts and contributions of the 2018 DPHA Awards Committee.

A special thank you goes to the 2018 Committee Chairs David Crossley of Baci by Remcraft and Colonial Bronze and Dennis Mezzapesa of TCB Sales

Judging for the 2018 DPHA Product of the Year Awards was outsourced. Entries were judged by a distinguished panel of media, marketing and industry luminaries who evaluated each entry based on design and technological innovation.

2018 DPHA Product of the Year Award Judges



Mary Jo Peterson, CMKBD, is an award-winning designer whose work has earned national recognition including induction into the National Kitchen & Bath Association's Hall of Fame. She is certified in kitchen, bath, aging-in-place, and active adult housing design and has 25 years of experience. Peterson is also president of Mary Jo Peterson, Inc., a firm that focuses on residential projects and provides design support to major homebuilders and product manufacturers nationwide. A universal design expert, she has authored multiple books on the subject and is a frequent national speaker and educator. She has developed and taught courses on sustainability in kitchen/bath design and outdoor kitchen design. Peterson has been instrumental in the development of the original and recent versions of the Certified Aging in Place Specialist courses (CAPS) for the National Association of Home Builders (NAHB), as well as NAHB's Universal Design/Build course. Current editions of her books, *Kitchen Planning* and *Bath Planning*, have just been published by Wiley for the NKBA, as part of its professional resource library. Peterson is an active member of NKBA and NAHB, as well as of many building and design industry efforts to bring beautiful universal design to everyone.



Eliot Sefrin is the founding editor of *Kitchen & Bath Design News*, which is marking its 35th year of publishing in 2018 and widely considered to be the leading magazine serving kitchen and bath design professionals. Sefrin has spent most of his career in media covering the kitchen and bath industry, serving as KBDN's editorial director and publisher from 1994-2011. He currently serves as publisher emeritus for KBDN and its parent company, SOLA Group Inc., that also publishes KBDN's sister magazine, *Qualified Remodeler*.

KBDN has helped shape, define and educate the kitchen and bath industry, while helping raise the professionalism and profitability of its 45,000+ monthly readers through both its print publication and seminar programs, which deliver live education to kitchen/bath professionals in key U.S. markets.

Sefrin partnered with DPHA to create the DPH Perspectives column more than a decade ago, a column that is still published exclusively in *Kitchen & Bath Design News*. Sefrin has also served as a speaker at NKBA chapter meetings, as well as at the Kitchen & Bath Industry Show (KBIS). He was inducted into the National Kitchen & Bath Association's Hall of Fame in 2008 and in 2012 became the only member of the media ever to be afforded honorary membership in the Kitchen Cabinet Manufacturers Association (KCMA) in recognition of his service to the industry.



Nicole Weiland is the project design manager for the residential division at Charleston Building and Development, a luxury custom home builder in the Chicago area. From generating construction drawings to cabinetry design to specifying plumbing and lighting, Weiland tackles the majority of design decisions that take place on the residential side of the business. She has a degree in environmental and interior design from Illinois State University and has been working in the home building sector of the design world for 12 years. Her work has been published nationally and she recently won the Northern Illinois Home Builders Association Gold Icon Award of Excellence for kitchen design. Weiland works closely with architects, material suppliers and contractors to produce beautiful custom homes for her clients. When not traveling from job site to job site Weiland can usually be found buried in antique or thrift stores (buying yet another vintage chair) or devouring design magazines and websites for her next inspiration.



Alissa Ponchione has worked in trade journalism for most of her career, writing for *Nightclub & Bar*; *Hotel News Now*; and, currently, as executive editor of *Hospitality Design* magazine, a leading publication in the hospitality industry. She has a degree in journalism from Ohio University, and a master's in literature from American University.

Our fifth judge was Lindsay Crozier, Director of Interiors at Made LLC in the greater New York City area.

2018 DPHA Product of the Year Nominees

Table of Contents

The 2018 DPHA Product of the Year Awards categories include:

- Plumbing Product of the Year – Fixture
- Hardware Product of the Year
- Plumbing Product of the Year – Water Delivery
- Furniture Product of the Year
- Accessory Product of the Year

Product of the Year – Fixture Nominees

Flora Shower Bases, AD Waters	Page 5
Trumpet Flush Plate by OLI, AD Waters	Page 5
SCALA 7242 Freestanding Bath, BainUltra	Page 5
Doyle Tub, Barclay Products	Page 6
Charis Sink, GRAFF	Page 6
Millennium Tub, Hydro Systems	Page 6
Malibu II Back-Outlet Toilet, Icera	Page 7
UltraLedge Prep Sink, Lenova	Page 7
Incline Sink, MTI Baths	Page 7
Tahoe 55 Freestanding Bath, Oceania Baths	Page 8
Metallo 100 Washstand, Victoria + Albert	Page 8
Materia Shower Enclosure, Zitta	Page 8

Product of the Year – Water Delivery Nominees

TURBO TOTEM Thermostatic Valve, AD Waters	Page 9
Beale MeasureFill Touch Kitchen Faucet, American Standard	Page 9
ANGLE 1-Hole Faucet, Baril	Page 10
EMPRESSA Kitchen Faucet, BLANCO	Page 10
Litze Articulating Kitchen Faucet with SmartTouch, Brizo	Page 10
Custom Pot Fillers, California Faucets	Page 11
Customizable Combo H+C Dispenser, California Faucets	Page 11
Descanso Widespread Lav Faucet, California Faucets ...	Page 11
RAINMOON Rain Panel, Dornbracht	Page 12
Incanto Faucet, GRAFF	Page 12
ShowerTablet 600 2-Function Exposed Thermostat, hansgrohe	Page 13
STYLE Single Lever Pull-Out Kitchen Mixer, in2acqua	Page 13
LMK Widespread Faucet, Samuel Heath	Page 13
Sigma Flo, SIGMA	Page 14

Furniture Product of the Year Nominees

M4 60-Inch Double Bowl, Wall-Mount Vanity, Fairmont Designs	Page 15
Studio One 36 X 18 Wall-Mount Vanity, Fairmont Designs	Page 15
Josie Vanity, Furniture Guild	Page 15
Stratos Vanity, Hastings Tile & Bath	Page 16
Linea Vanity L323L, LACAVA	Page 16
Profiles Collection, Robern	Page 16

Elemental Collection, Stone Forest	Page 17
C2 Console, Wetstyle	Page 17

Accessory Product of the Year Nominees

Illuzio Chromatherapy System, BainUltra	Page 18
Natural 15 Bar 17- Inch With Personal Temperature Selection, Bathroom Butler	Page 18
Compact Floor Drain Body, Infinity Drain	Page 18
ChromaSteam3 System, MrSteam	Page 19
Delmar Series Wedgewire Drain, QM Drain	Page 19

Hardware Product of the Year Nominees

Pandora Barn Door Hardware, Beyerle, US	Page 20
Empire Collection, Colonial Bronze	Page 20
2581 Door Knob, Frank Allart	Page 20
CK100 Collection, Hamilton Sinkler	Page 21
Double Snake Pull, Lisa Jarvis Jewelry	Page 21
Crystal Cabinet Knobs, Nostalgic Warehouse	Page 21
Edge Wing Scroll 190, Turnstyle Designs	Page 22

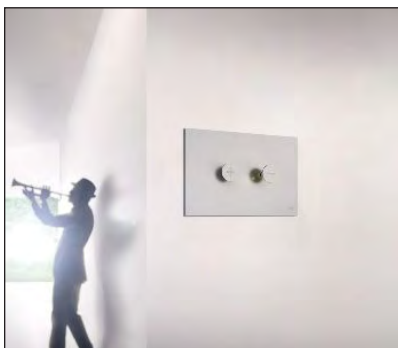
Previous Product of the Year Honorees.....	Page 23
--	---------



Fiora Shower Bases **Fiora/AD Waters**

Designed for a high-end aesthetic and everyday comfort and safety, Fiora Shower Bases can be easily installed above the floor or flushed to the floor, for a more discreet look and/or for an ADA-compliant design. Extremely adaptable to virtually any space, Fiora's shower bases can be cut on-site to fit within an odd-size setting or to work around an existing structural element. Additionally, Fiora shower bases offer reduced installation time and cost compared to tiled shower floors and limit chances of future water leaks. Fiora's proprietary Nanobath® technology prevents bacteria from reproducing (offering bacteriostatic properties), while repelling surface stains. The surface is finished with the company's Metalface® technology which guarantees additional protection against damage and wear.

Fiora's cornerstone product is SILEXPOL - a proprietary material comprised of polyurethane and minerals. SILEXPOL is easy to maintain, provides more warmth and safety properties - including a level 3 non-slip certification - than porcelain, acrylic, enameled steel and solid surface materials. Customers in North America haven't seen any material innovation in the shower base category for the last three decades. Fiora offers a product that provides a high-end aesthetic, yet is durable, incredibly easy to install and versatile in color selections (8 earth-tones).



TRUMPET Flush Plate By OLI **AD Waters**

The TRUMPET flush plate is unique. Designed by world renowned architect Siza Vieira, TRUMPET is an elegant flush plate that perfectly characterizes the pistons of a trumpet. Featuring a stainless steel, extra thin plate and a soft-press pneumatic actuation, the water-saving dual flush pneumatic actuator can also be used for alternate installations up to two meters away from the cistern to optimize comfort.



SCALA 7242 Freestanding Bath **BainUltra**

Scala 7242 is a freestanding bath that blends contemporary design and classic elegance. With harmonious curves of the outside shell, the aesthetic of this bath is enhanced by the modern design of the metal feet bringing originality and sophistication to a timeless classic. The metal feet were designed and molded specifically for this Scala 7242.

BainUltra did not compromise style over benefits with the Scala 7242 freestanding bath. Scala 7242 combines unique therapies (air jets with Geysair hot air system, the new invisible chromatherapy system Illuzio and the heated seat and backrest) with the stylish and modern metal feet and armrests and offers the latest finishes: satin brass, matte black, black chrome, brass, brushed & polished nickel and chrome.

The name Scala was inspired by the "Teatro alla Scala", a 200+ year old famous opera house in Milan. As the audience of the theater reveled in inspiring performances, so too will bathing in Scala take you away to a world of refined and soothing luxury.

Product of the Year • **Fixture Nominees** *continued*

Doyle Tub **Barclay Products**

Doyle radiates primitive appeal. Straight from the mold, with no embellishments, the exterior surface is polished to a smooth sheen that allows all the scars of the raw cast iron to show through. Each tub is a unique creation that possesses a character all its own.

Doyle was designed to add an olde world appeal to the double roll top design, which is a proven winner in style.



Charis Sink **GRAFF**

The Charis sink is constructed using GRAFF's exclusive Sleek-Stone® and is available in matte and gloss white finishes. The innovative material is comprised of 75% natural dolomitic minerals bonded with a unique resin producing a naturally beautiful and durable product. GRAFF employed state-of-the-art casting technology alongside traditional artisanal process to create the durable and elegant Sleek-Stone® material for the contemporary Charis Sink. The Charis sink allows for countertop and wall-mounted installation, giving more versatility to its application.

Exuding a contemporary style, the sink's design features a delicately sloped basin made complete with a subtle grid drain concealed by a decorative cover plate that can be easily removed for upkeep. Rounded corners at the sink's front provide a softened contrast from its more modern backside for a style that plays to a variety of aesthetics.

This piece was inspired by the combination of sharp angles and curvilinear edges found in contemporary architecture. The Charis sink merges popular paradigms into a tangible product, asserting a strong style. With the balance of curves and sharpness, Charis was designed for any and every setting with its design alluding to modernism and perpetuating consistency in design and architecture.



Millennium Tub **Hydro Systems**

The Millennium Tub was inspired by the Crain Communications Building, one of the most iconic buildings in Chicago. Clad in alternating bands of glass, aluminum and stainless steel, the structure's exterior is slashed by a prominent vertical slit, which draws eyes to the upper portion of the building.

The Millennium also has a band that runs across the tub so that the installer can add marble, tile, or any other material to the bottom half of tub to allow for a seamless transition from the walls of the bathroom to the bathtub.

The tub's asymmetrical embellishments make it striking and singular. Choose different colors above/below the band, for the band, along with matching the overflow and drain to any color of choice. Additionally, there is the ability to install marble, tile, or any product to blend with the rest of the bathroom wall.





Malibu II Back-Outlet Toilet **ICERA**

The new Malibu II Back-Outlet toilet is designed for additions and remodeling projects where traditional floor plumbing is problematic. The back-outlet toilet connects to the wall to offer a powerful flush and a sophisticated streamlined design. The simple connectivity eliminates potential installation challenges. The skirted styling complements a wide variety of bathroom décors.

The Malibu II Back-Outlet toilet combines the best of form and function. It is one of the most efficient gravity toilets in its class (certified 1000 g MaP score), and offers a sleek, modern look. Malibu II Back-Outlet Toilet is the perfect choice for renovations or additions where a bottom outlet is not readily available.



UltraLedge Prep Sink **Lenova**

Available in both 46" and 60" models, the UltraLedge Prep Sink is the ultimate professional grade sink for residential use. Double-tiered tracks accommodate the use of more colanders, cutting boards and roll-up grid racks. The oversized UltraLedge is the ultimate prep and clean-up station, a professional-grade work area worthy of the busiest home chefs who have large families to feed or who simply love to cook and entertain. The UltraLedge Prep Sink is a perfect example of bigger being better.



Incline Sink **MTI Baths**

The Incline is a chameleon of sink designs – it can fit in anywhere. It is available as a counter-sink, vanity sink or undermount sink. Offering a sleek style with minimalist lines, the Incline features an eye-catching sloped bottom that adds a geometric element. It is made of solid SculptureStone for a molded stone look that is durable, eco-friendly and easy to maintain. Customers can also specify lengths, single or double bowl configurations, and the bowl position.

The Incline's bowl is fully and seamlessly integrated and has a variety of different options for installation, making it truly versatile.

Product of the Year • **Fixture Nominees** *continued*

Tahoe 55 Freestanding Tub **Oceania Baths**

The Tahoe 55 freestanding tub has the ultimate in flexibility. It can be ordered in symmetrical, rectangular or oval shapes. It offers a clean modern look with center drain. Its thin ledge gives more interior volume and offers sloping walls to enhance comfort.



Metallo 100 Washstand **Victoria + Albert**

The Metallo 100 basin top is made from Victoria + Albert's proprietary ENGLISHCAST™, a composite of Volcanic Limestone™ and high quality resins. The elegantly designed frame is made in Italy, from a brass construction and plated in polished chrome. Metallo 100 is designed by Meneghello Paoletti Associati, known for its take on refining classic designs so pieces will work equally well in modern or traditional environments.

The Metallo washstands feature right angle tee joints that reference traditional bathroom pipework, looking equally at home in a more historic-period bathroom or industrial-inspired scheme. The washstand features a practical towel bar and a shelf for storage, finished in a tubular brass. The Metallo 100 (39-3/8" W) is topped with a Victorian-inspired Lario 100 Solo basin.

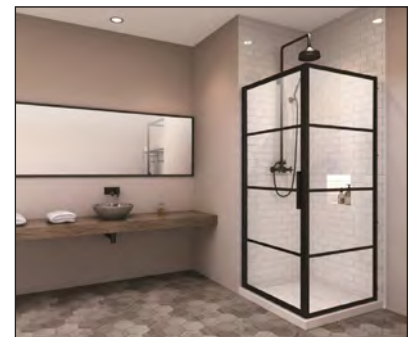


Materia Shower Enclosures **Zitta**

The Materia collection introduces unique matte black framed shower doors. The black aluminium strips are finished on both sides and sealed on the outside of the glass only, which allows us to apply the ZittaClean treatment to the inside of the glass for easy cleaning. The 180° pivoting door allows for a wide opening inside and out, providing ease of use in even the smallest space. The structure and construction of the Materia collection allows endless possibilities of configuration thanks to the framed door and panels allowing the client to truly customize their shower enclosure.

The Materia collection creates an industrial chic look with a European touch. The blend between the modern hardware and the dark frames add simple sophistication and the clean lines bring a distinctive design element to the room.

The Materia collection takes its inspiration from the industrial look of the roaring '20s.





TURBO TOTEM Thermostatic Valve by Aquabraxx AD Waters

The TURBO TOTEM is one valve for all applications: Easy, trouble-free high flow universal valve that is applicable for any installation type with maximum performance. No need to modify existing pipes. Reversible check valves make for easy back-to-back installation or an easy fix if the water lines are accidentally inversed.

Shut-off valve outlets can be connected either from the right or left of the stack or both simultaneously. High-flow thermostatic cartridge at 12gpm at 45psi even with 1/2' feed. Removable NPT plug at top for extra independent shut-off valve connection.



Beale MeasureFill Touch Kitchen Faucet American Standard

The Beale MeasureFill Touch kitchen faucet employs industry-leading technology to deliver an adjustable set volume of water on demand--ranging from a half cup to up to 40 oz.--achieving precise measurement and eliminating the need for a measuring cup. It is among the first kitchen faucets on the market that can deliver a set amount of water on demand with the simple turn and tap of the selection dial, and offers flexible metering in a choice of ounces or cups. The Beale MeasureFill touch kitchen faucet offers the added benefit of providing touch on/off functionality, ideal for when the user's hands are dirty or full. Set the MeasureFill dial to the start position, and a touch of the wrist or back of the hand on the dial is all it takes to operate the faucet. When using the MeasureFill Touch dial, the faucet will automatically shut off after five minutes as a safety precaution and to prevent water waste and overflow. The faucet can easily be operated in manual mode using its ergonomically designed lever handle, accommodating family members or guests not comfortable with the touch functionality.

The Beale MeasureFill Touch kitchen faucet showcases a sleek shape and smooth design lines that are well-suited to kitchens that highlight contemporary or transitional styling. Thoughtful features include an attractive coin-edge detail on the MeasureFill dial that helps to improve grip and ensure an accurate setting of the desired water amount.

The Beale MeasureFill Touch kitchen faucet is available in a choice of two popular finishes -- polished chrome and stainless steel -- to easily coordinate with contemporary-styled kitchen appliances and accessories.

ANGLE 1-Hole Faucet Baril

This innovative kitchen faucet merges technology and trends to meet the most exacting requirements in terms of functional design. The handle, repositioned on the angled base, creates the essence of the visual signature while the magnetic two-spray head mounted on a polypropylene hose eliminates friction and noise and completes the functional aspect. In addition to its unique technical features, the brushed black finish adds style and sophistication.

Developed around a strong profile and in perfect control of the shapes, ANGLE enabled the redrawing of components by creating simple and efficient intersections that redefine the trends of this environment.



EMPRESSA Kitchen Faucet BLANCO

The design of this faucet was inspired by the shape of vintage wine presses found in Europe. EMPRESSA offers traditional style mixed with clean lines. It fits perfectly with any design style. Four different models provide versatility and come in new finishes that include polished nickel and oil rubbed bronze.

The EMPRESSA collection is expertly crafted to seamlessly blend traditional elements with contemporary lines.



Litze Articulating Kitchen Faucet with SmartTouch Brizo

The Litze® Articulating Kitchen Faucet with SmartTouch® Technology is at the forefront of culinary design and innovation. The articulating arm provides unparalleled flexibility, allowing users in the kitchen to position the faucet for any given task. The Litze® Articulating Faucet stands out for its ability to separate the wand from the arm. The hose is semi-flexible and durable, while the arm can move completely out of the way, providing the sprayer with a full range of motion.

Increasing functionality even further, the faucet features MagneDock® Technology, a state-of-the-art magnetic docking system that securely holds the spray wand in place when not in use. The durable magnets, made to last forever, help to maintain the faucet's distinctive form, keeping the spray wand perfectly aligned, for a clean, seamless look.

Additionally, optional SmartTouch® Technology allows users to activate water flow with a simple touch to the faucet body, arm or handle, bringing a new level of convenience to the kitchen. This innovation makes it easy to activate water only when needed, helping to reduce water usage and increase efficiency of motion.





Custom Pot Filler **California Faucets**

Uniquely flexible, solid brass custom pot fillers, with more than 35 handle options to perfectly match any of California Faucets' kitchen collections. Available in over 30 artisan finishes, including 15 PVD finishes, which make these pot fillers especially able to withstand the rigors of kitchen use.

Depending on handle choices, these pot fillers can match any design motif. View the line as a type of chameleon. These pot fillers can be traditional, contemporary, art deco, industrial, etc., providing designers with the ability to precisely meet their own design vision.



Customizable Combo H+C Dispenser **California Faucets**

Unlike other dual hot/cold water dispensers, this model allows both instant hot or filtered cold with a single handle. Rotate the handle forward for cold filtered water, backwards for instant hot water. An innovative safety spring automatically returns the handle to off when using hot water. Available in a myriad of handle options and available in 30 plus finishes.

The single handle design contrasts with typical two-handle versions. This "one-armed bandit" look creates an elegant and uncluttered look.



Descanso Widespread Lavatory Faucet **California Faucets**

Descanso is California Faucets' unique take on the industrial look. Deep and striking knurled accents lend it an extremely high quality look and feel. The carbon fiber accent option allows specifiers to create a striking twist on the theme, melding the "old school" industrial age with ultra "hi tech" material.

Inspired by the forms and ethos of early industrialization, Descanso features classic tubular shapes, knurling, and hexagonal nut and bolt adornments. Bringing a uniquely updated twist that blends the industrial age with a clear nod to modernity.

Descanso is also available in over 35 finishes, including 15 PVD finishes.

RAINMOON Rain Panel **Dornbracht**

Water, light, energy – RAINMOON represents a new dimension of a highly-individual shower experience. The spa application permits a unique encounter with the element of water: two newly-developed flow modes and a unique moonlight are combined to create an emotional water experience providing new life energy.

RAINMOON is distinguished by its particularly minimalist design, attributing focus to the unique water experience. A dome in the ceiling forms the central element which is seamlessly integrated in its surroundings and practically merges invisibly with the bathroom or spa interior. The dome offers a particularly deep-view effect: by means of a concealed light strip inside the semi-sphere, RAINMOON creates the perfect mood lighting while generating a feeling of infiniteness when gazing upwards. The unique water experience is created by two innovative flow modes.



Incanto Faucet **GRAFF**

The Incanto Collection is an engineering masterpiece - imbuing slimness yet sturdiness, weightlessness yet constancy. Challenging traditions in form and proportion, the Incanto Collection offers a sleek geometric shape to modernize bathroom aesthetics in both residential and hospitality applications. Minimalism is mastered with the parallel and opposing lines of the Incanto faucets, as each piece blends seamlessly with any sink or bathtub counterpart. To maximize options, Incanto is available in fourteen finishes including the new OR'osa PVD®, onyx PVD, gunmetal, and 24K brushed gold finishes.

The Incanto Collection was inspired by a desire for refreshed minimalism within the marketplace. This new faucet collection has a streamlined shape inspired by classic geometries that promote a sophisticated ambiance in the bath. The collection, available in deck-mounted, wall-mounted, and free-standing elements with coordinating accessories and shower components, provides both versatility in its design and application.





ShowerTablet 600 2-Function Exposed Thermostat **hansgrohe**

The ShowerTablet 600 2-Function Exposed Shower Thermostat is user-friendly, with easy-to-decipher symbols for the 2 different spray mode options and temperature control settings. The ShowerTablet has an exposed thermomstatic mixer that doubles as a convenient shelf enabling users to place whatever showerhead style and type they want wherever they want. It is only limited by how far is needed to run the mixed shower-water pipe inside the wall.

The ShowerTablet 600 2-Function Exposed Shower Thermostat's exterior surfaces are comprised of high quality, mirrored safety glass, and the shelf is comprised of anodized aluminum. The ShowerTablet is available in a sleek chrome finish, as well as a white/chrome dual finish. The ShowerTablet provides a large (almost 24") shelf area and mixer, is beautifully designed, looks unique, is functional and easy to use, and customizable to the desires of the designer and/or customer.



STYLE Single Lever Kitchen Faucet **in2aqua**

STYLE offers a solid brass faucet body, Fluehs cartridge, and advanced PVD+ plasma coated greaseless ceramic disc technology. The proprietary all-brass M-Lock faucet collar reduces risk of over-tightening during installation. Spout swivels 270 degrees for increased comfort. High performance two function non-metallic pullout spray with position lock. Easy to clean silicon nozzles. Flow rate 1.8 GPM. The design objective was to create a light-weight, transitional style that reflects grace and harmony.



LMK Widespread Lav Set **Samuel Heath**

The LMK Industrial faucet is carefully crafted offering second-to-none attention to detail. The cross hatching detail throughout the escutcheons, handles and spout along with the low profile handles give this product great character.

LMK consists of two Bauhaus-inspired collections that are well-balanced and concise with a restrained minimalist design. LMK Industrial is imbued with precisely machined details that give a distinctly mechanical and tactile contemporary aesthetic.

Sigma Flo
SIGMA

SIGMA Sigma Flo is a valve assembly, which attaches to the cold side handle on almost any 8" widespread lav faucet and allows the lav faucet to become a point of use on-demand filtered water dispenser. The handle dispenses normal cold water when pulled forward but will dispense filtered water when pushed back. This assembly allows the customer to choose the filter of their choice.





M4 60-Inch Double Bowl Wall-Mounted Vanity **Fairmont Designs**

Modern sophistication with a touch of industrial elegance designed for the master suite is the hallmark of Fairmont Designs' M4 vanity. The Walnut veneer is continued across the three drawer fronts for the entire 60" span of the unit. The 21" depth of the M4 provides multiple options when pairing the furniture piece with a coordinating top, whether natural stone or quartz with sink choices of a vessel or undermount.

Despite the minimal look that a wall mount piece provides, this large double sink unit offers ample functioning storage with three large drawers along with a center concealed drawer.



Studio One 36x18 Wall-Mount Vanity **Fairmont Designs**

Studio One's sleekness and sophisticated design combine classic styling with a dash of modernity. The casual contemporary wall-mount design offers something different, yet very familiar. The glossy pewter finish along with the polished chrome hardware provides a contemporary yet timeless look for any size modern bathroom. Two functional drawers and the open shelf provide a generous amount of storage in a small space.



Josie Vanity **The Furniture Guild**

With Midcentury Modern vibe, Josie is available in sizes from 24 - 72 inches, with multiple configurations available. Metal finishes include brass finishes, polished nickel and oil can. The vanity is available in all standard paints and stain finishes as well as custom paint color matches. Josie includes four brass legs and brass trim that wraps around each fully inset drawer.

Josie has three full working drawers and 5 inches of space for an undermount sink. Each leg is made by hand, one at a time, out of solid brass. Brass trim is added to each drawer and is fit to an inset faceframe.

Stratos Vanity **Hastings Tile & Bath**

The beauty of its simple lines is what makes Stratos a fresh modular approach to vanity design. With side cabinets, underneath storage, drawers that can be aligned or offset to the left or right or floating just above the floor, Stratos is linear perfection! Stratos' cabinets are available in 35 matte or glossy colors or three beautiful wood laminate finishes, while its solid surface countertop is available in three matte or six glossy finishes. The color range includes soft white (latte), deep yellows, mandarin, red and all the way to bronze and black.



Linea Vanity L323L **LACAVA**

Elements of this vanity are made to appear extra slim by incorporating miters and routing. The fronts of the vanity are mitered to create the look of inset drawers without the typical gap. The frame meets this with a partial miter creating the look of a thin edge. The countertop is routed out to set into the metal frame giving it an extra thin profile of only 1/4 of an inch. The shelves, in the same material, are set perfectly into the metal frames. The frame not only adds to the aesthetic but also functions as a towel bar.

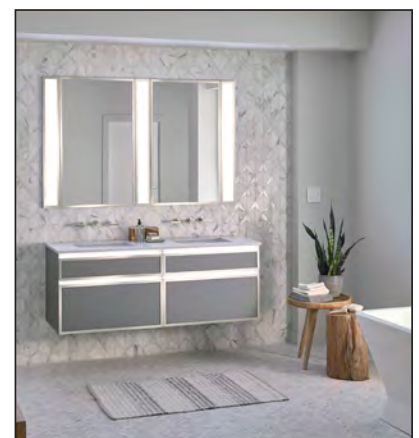
There are strong architectural inspirations behind this line. Sleek metal frames intersect and cantilever from a bold base. The countertop and shelves float in the metal frame. Each piece locks with the other to create a clean yet complex design.



Profiles Collection **Robern**

Clean, modern styling and the latest in technology come together to create the collection by employing an integrated approach to interior design offering ala carte cabinetry and vanity sizes, lighting options, and wide range of glass and metal finishes that provide stylish solutions for every lifestyle. Inspired elements of Art Deco design are woven into pared down Cubist styling and coupled with high-function features and technological advances. The collection addresses every element to create an extraordinary experience: Medicine cabinets with its pared down aesthetic and classic lines perform on every level. The medicine cabinets are offered in a range of sizes, with widths of 12, 16, 20 and 24 inches; heights in 30- and 40-inch choices; and, 4-inch and 6-inch depths.

Metal finishes include chrome and polished nickel plated finishes and matte black and matte gold anodized finishes. The Profiles vanities are available in a variety of glass colors with integrated nightlights, in-drawer electrical outlets, slow close, tip out drawers, slim drawer inserts and organization kits. The modular lighting features Robern's best-in-class LED lighting technology assuring dependability and long life. It has a high lumen output and 90+ CRI (Color Rendering Index) to render remarkable, realistic color. Profiles modular lighting is offered in 30-inch and 40-inch heights and 3.5-inch and 5-inch widths.





Elemental Collection **Stone Forest**

Elemental™ is a unique modular concept that combines integral stone sinks, wood drawers, and steel or wood shelving in unlimited combinations. Brass legs with knurled fittings support the components and are available in either aged brass or polished nickel.



C2 Console **Wetsyle**

C2's innovative quality comes as a result of its incomparable ability to pair eye-catching wood finishes with versatile application options for an unexpected designer piece in the bath. The tubular lines and minimalist style of the C2 collection create a hip, modern look for an urban environment. Thanks to its sleek structure, C2 features a small, uncluttered footprint, making it ideal for small bathrooms.

The base of the console unit is made of matte black stainless steel rungs and can be equipped with an optional storage drawer in natural walnut. In addition to being practical, the drawer adds contrast and a touch of warmth. A matching mirror with a walnut shelf and free-standing towel rack complete the collection.

C2 consoles can be combined with the WETSTYLE Element collection sinks in either the 24" or 30" sizes. These washbasins with rounded edges are available with overflow trims that feature an optional matte black finish to seamlessly integrate with the rest of the collection.

Product of the Year • **Accessory Nominees**

Illuzio Chromotherapy System **BainUltra**

BainUltra has developed a seamless chromotherapy system with hidden LED lights that leave the bath's inner shell completely intact and smooth. ILLUZIO'S chromotherapy LED are cleverly tucked away inside the structure of the bath so they're invisible when the system is not in operation. Activate the chromotherapy and oval colored lights glow beautifully through the bath's translucent acrylic shell, providing the same therapeutic benefits as traditional chromotherapy systems. ILLUZIO boasts the frequencies and wavelengths that deliver the most effective chromotherapy with maximum benefits.



Natural 15 Bar 17-Inch With Personal Temperature Selection **Bathroom Butler**

The Natural 15 Bar 17-inch unit comes with the unique Personal Temperature Selection (PTSelect) as standard that allows users to vary temperature based on their personal heat preference. The controller is subtly built into the heated towel rail and doesn't take away from design aesthetics with large control boxes.

The design is contemporary offering unique color selections. This heated towel rail is finished in a brushed brass PVD finish and can also be finished in polished rose gold, matte black and brushed bronze. The unit was designed to fit in narrow spaces, with the height compensating for the reduced width. The brushed brass finish has been developed to ensure that heated towel rail colors can be combined with modern color palettes offered by faucet manufacturers.



Compact Floor Drain Body **Infinity Drain**

The new patent pending clamping floor drain has been re-designed to a more compact size to allow easy installation of a linear drain against the shower wall. With traditional clamping floor drains, a complicated process of furring the wall out with extra sheets of cement board over the flange of the clamping floor drain was needed to reposition the finished wall closer to the linear drain channel. This smaller footprint will make it easier to achieve the look that everyone wants: the linear drain directly against the shower wall with no strip of flooring material between the drain and the wall tile.

This new floor drain, instead of a 6-1/2" diameter has a 3-1/4" diameter at its narrowest part. The clamping floor drain is available in cast iron, PVC, and ABS.





ChromaSteam 3 **MrSteam**

The ChromaSteam3 is a sophisticated mood lighting system that uses the intuitive color wheel interface to achieve just the feeling you're looking for while you steam. Try energizing yellow or orange, deep blues and indigos, green and countless combinations. These, and nearly every color in between, are available at the touch of a finger thanks to the built-in color microprocessor. The iSteam3 can control the intensity of the light, the duration of the session, and even set the light to pulse in a gently rhythmic pattern or in an invigorating disco show. The ChromaSteam3 is comprised of cool, long-life LED bulbs in an attractive vapor-sealed housing available in white or black.



Delmar Series Wedgewire Drain **QM Drain**

Wedgewire is meticulously crafted using the highest quality stainless steel marine grade 316. This drain brings modernity to the traditional world of shower drains. It is the most flexible linear drain in the market. It can be used indoors and outdoors with either 2" or 3" outlet, can turn a corner, can be adjusted to any length with outlet location in any position along the channel, and is also available in a convenient standard fixed length

Product of the Year • Hardware Nominees

Pandora Barn Door Hardware **Beyerle US**

The new Pandora series comes in fresh color palettes of six surfaces, including satin stainless steel, stainless steel polished, dark bronze, matt-gold, rose-gold and steel and black powdered. The product has the “click & safe” anti-jump device which prevents the door from jumping off the track.

The style of the trolleys is simple and contemporary, which allows this system to play with different surfaces such as matt gold and rose gold without losing its modern and timeless design.



Empire Collection **Colonial Bronze**

The Empire Collection responds to the ubiquitous simplicity of the contemporary hardware that currently dominates hardware fashion. Contemporary hardware is popular because it is clean and has simple lines. However, it is sometimes so devoid of design that it risks becoming mind-numbingly bland. The Empire Collection keeps the simplicity of contemporary, but adds a subtle element of detail that makes the design more visually interesting and aesthetically satisfying. The final touch that makes the Empire Collection is the radius back of the handles, which provide a pleasant ergonomic feel without compromising the clean look of its rectangular lines.

The Empire Collection has been certified to contain 94% pre-consumer recycled material by SCS Global, a third party auditor of environmental recycled content claims.



2581 Center Door Knob **Frank Allart**

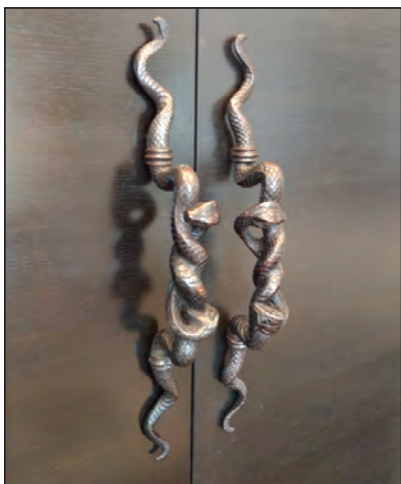
The 2581 is a large center door knob available as a single piece or pair for back-to-back mounting. Two sizes are available – 81 and 94mm – and can be custom engraved. The 2581 offers a contemporary design that is forged from blocks of solid brass to produce perfect details and proportions.





CK 100 Collection **Hamilton Sinkler**

The classic cross-hatch combined with modern, clean lines creates a strikingly beautiful piece of cabinet hardware. The CK100 is the result of interior designer Elizabeth Scott who couldn't find the right cabinet hardware for a client, so she created this suite herself with Hamilton Sinkler. She drew inspiration from the classic beauty of the traditional era as well as modernism's simplicity to create a transitional collection that bridges both styles.



Double Snake Pull **Lisa Jarvis Jewelry for Furniture**

The solid brass Double Snake pull is a beautiful object that makes a super impact on doors, drawers and refrigerators. The Double Snake is not only beautifully engraved and sensual to the hand, it's also 24" long. Two of these matching doors for example, transform a simple rectangle of wood or glass, into a statement and visual center that normally would never exist in passing from one room to another.



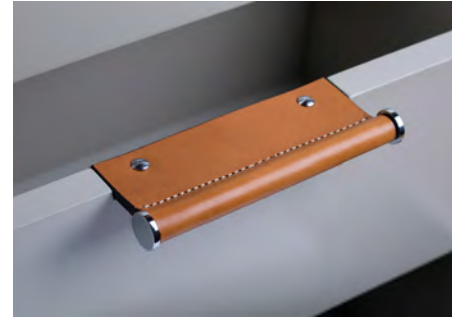
Crystal Cabinet Knobs **Nostalgic Warehouse**

Nostalgic Warehouse's Crystal Cabinet hardware uses solid brass and lead-free crystal and features intricate detailing that adds a true sense of luxury and refinement. The shape is derived from a baguette-cut diamond.

Edge Wing Scroll 190 **Turnstyle Designs**

The handle is made of bridle leather and handstitched to keep the metal part secure. The metal parts are available in seven different finishes of which three have hand-applied patinas.

The Edge Wing Scroll sits on the top edge of a drawer or cupboard. Once the drawer is morticed, the handle will sit flush, securely fitted with coordinated screws.



Plumbing Fixture of the Year

Eldon Tub by Victoria + Albert – 2017
2step Sink by Alape – 2016
Wave Tub by WETSTYLE – 2015
Ledge Prep Sink by Lenova – 2014
Metrio Modular Lavatory by Stone Forest – 2013
OpenSpace by Duravit – 2012
Black Embossed Bathtub by Blu Bathworks – 2011
Blanco Ronis by BLANCO – 2010
Eterne Bathtub by MAXX Bath Inc. – 2009
Starck K by Duravit USA – 2009
SYNC by Stone Forest – 2008
Julien's Bench Toilet – 2007
KWC Waterstation – 2006
BainUltra's Temazkal – 2003

Water Delivery Product of the Year

Sospiro Kitchen Faucet by GRAFF – 2017
ShowerSelect SoftCube Thermostatic Trim by Axor – 2016
Palomar Art Deco Tub Filler by California Faucets – 2015
Kartell by Laufen Faucet – 2014
ONO Light One Touch by KWC – 2013
Ametis Shower System by GRAFF – 2012
Complete Shower System CURA #960 by Aquabraxx – 2011
Integrated Faucet Filtration by ROHL LLC - 2009
Dream Light Rain Canopy by JACLO Industries – 2008
Water Decor's Pacifica – 2005
KWC Murano – 2004

Furniture Product of the Year

Avant 620-0560-OB-B49 Vanity by The Furniture Guild – 2017
The Galley Dresser by The Galley – 2016
Dressage Vanity by Graff – 2015
Sophia Vanity by Furniture Guild – 2014
Toledo 30" Vanity by Fairmont Designs – 2013
Halcyon by Native Trails – 2012
Bordeaux Wall Mount Vanity by Native Trails – 2011
MANHATTAN Bath Vanity by Xylem – 2010
M Collection by WETSTYLE – 2009

Dealers' Choice

Litze Single-Handle Lavatory Faucet by Brizo – 2017

Accessory Product of the Year

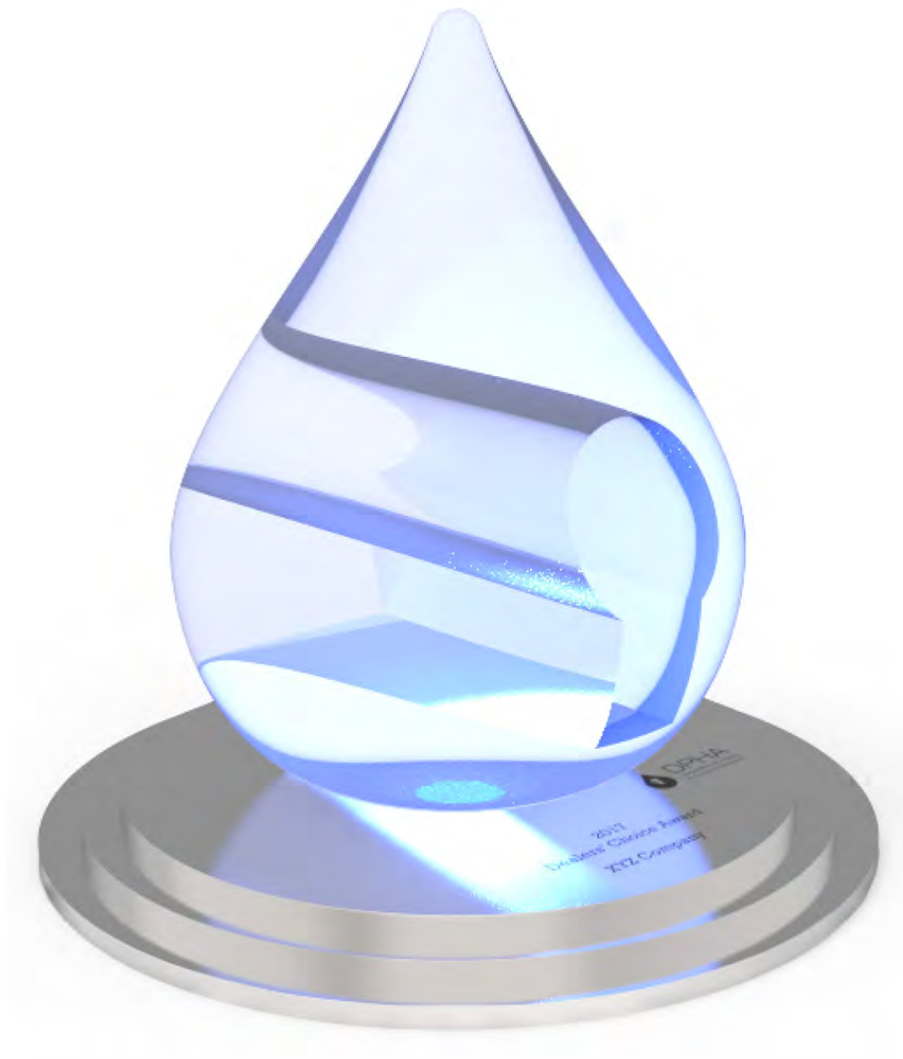
USG Shower System by Infinity Drain – 2017
Linear Steamhead by MrSteam – 2016
Heated Sink Stand by Barber Wilsons/Sterlingham – 2015
iSteam 2.0 Swipe-Touch Control Panel – 2014
StyleDrain by California Faucets – 2013
Solitude Mobile Application by ThermaSol – 2012
Cinu Toilet Tissue Holder with Glass Shelf by Ginger – 2011
Blanco Solon Compost System by BLANCO – 2010
Standby by ITALBRASS Group – 2009
Cold Storage M-Series Cabinet by Robern – 2008

Hardware Product of the Year

SilentPac Solutions by Accurate Lock & Hardware – 2017
DP14OZ Triangular Door Pull by Hamilton Sinkler – 2016
Argyle Round Knob by Du Verre Hardware – 2015
Precisely Beautiful Cabinet Knob by Colonial Bronze – 2014
Barn Door Track by Sun Valley Bronze – 2013
ARROYO Pull by Du Verre Hardware - 2012
Offset C-OF01 Knob by Du Verre Hardware - 2011
Convertible Latches by Berenson R. Christensen – 2010
Purfectkurv by MAXX Bath Inc. – 2010
BCJ Lever 1 by Reveal Designs – 2009
Tanner's Craft by Colonial Bronze – 2008
Beyerle's Exposed Stainless Steel Sliding Door System – 2007



2018 DPHA Product of the Year Guide



Decorative Plumbing & Hardware Association
7508 Wisconsin Avenue, 4th Floor
Bethesda, MD 20814
888-871-6520
www.dpha.net