



Miami Gardens, FL

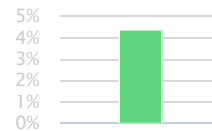
Community Profile

**TOTAL
POPULATION**
111,875

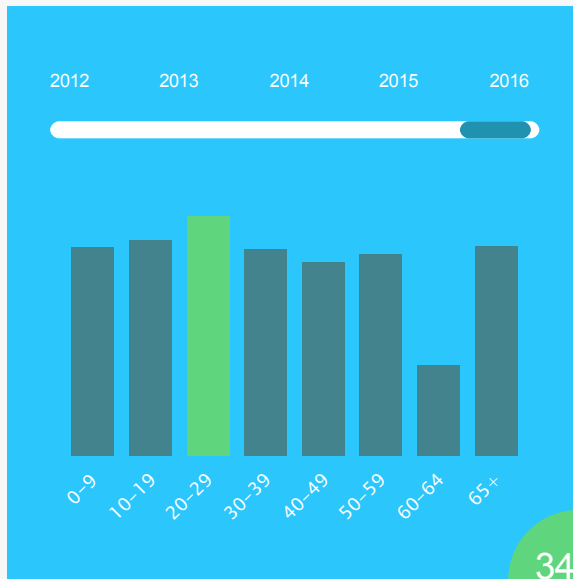
The total population of the City of Miami Gardens is 111,875. The median age is 34.60.



The population in Miami Gardens has grown 4.39% since 2012.



Age Distribution



47.04%
Male



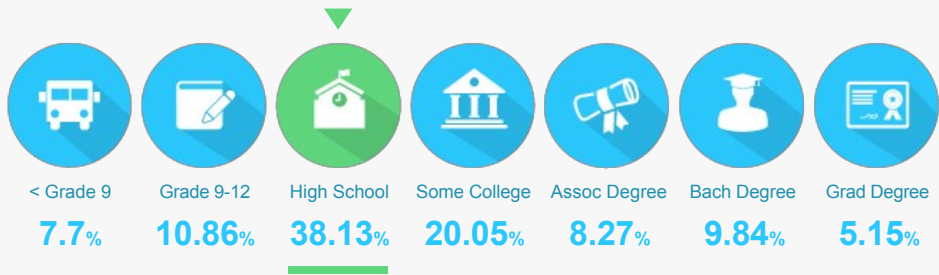
52.96%
Female



34.60
Median Age

EDUCATIONAL ATTAINMENT

The majority of the population in Miami Gardens has completed at least a high school degree.



23.26%
of the population
has a college degree.



offer Associate's Degree
or Certificate



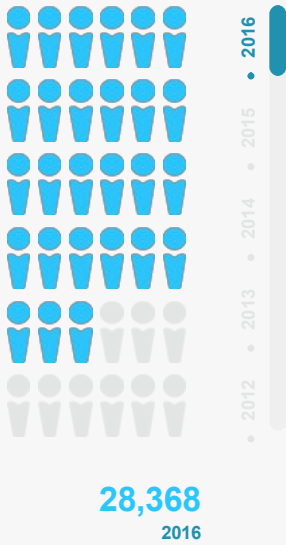
offer Bachelor's Degree
or Higher

LABOR FORCE

54,635

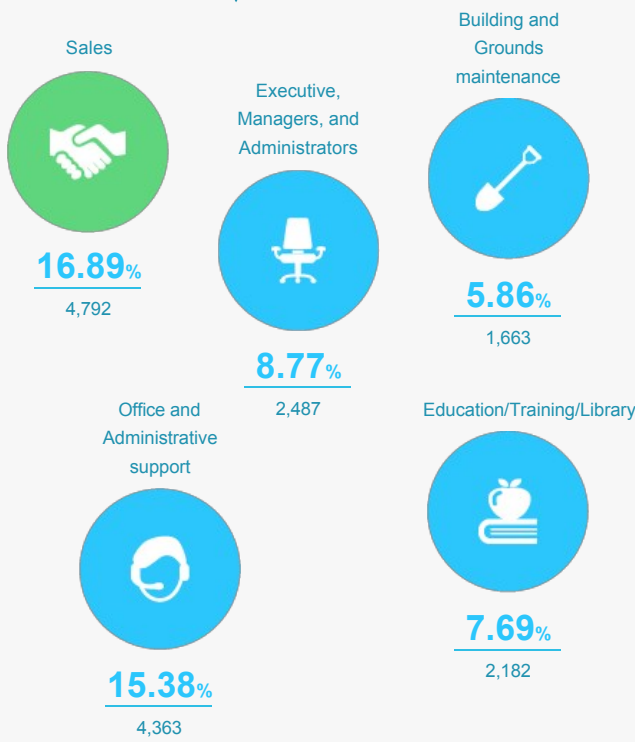
Miami Gardens has a labor force of 54,635 people, with a job growth rate of -2.23% since 2015, and an unemployment rate of 7.1%.

TOTAL EMPLOYEES

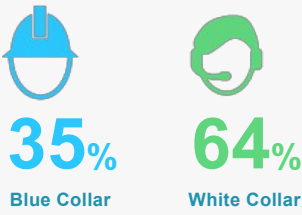


5 TOP TALENT

Where are the top jobs by occupation?



The work distribution of total employees in Miami Gardens is.



TOTAL ESTABLISHMENTS

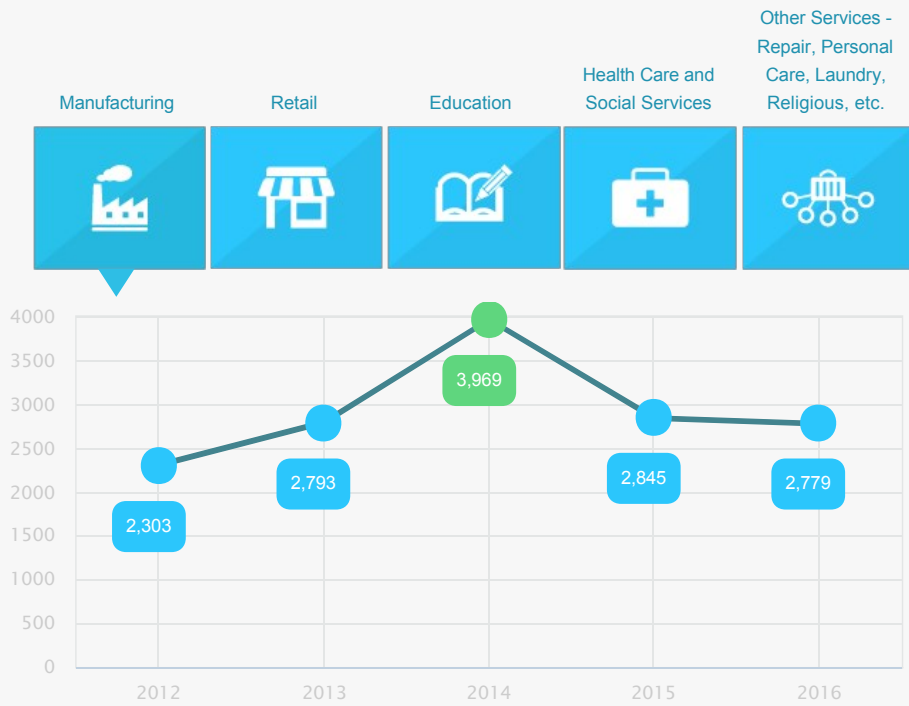
2,909

BUSINESSES AND JOBS

Miami Gardens has a total of 2,909 businesses. In 2016, the leading industries were:

Manufacturing, Retail, Education, Health Care and Social Services, and Other Services - Repair, Personal Care, Laundry, Religious, etc.

Which are the top 5 industries by jobs?



How many employees do businesses in Miami Gardens have?

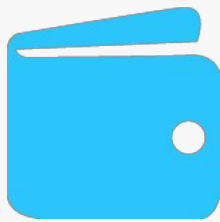


1-4 Employees	63.77%
5-9 Employees	19.15%
10-19 Employees	9.14%
20-49 Employees	4.3%
50-99 Employees	2.1%
100+ Employees	1.54%

INCOME AND SPENDING

Workers in Miami Gardens earn a median yearly household income of \$41,171. 31.96% of the households earn more than the national average each year. Household expenditures average \$44,790 per year. The majority of earnings get spent on Shelter, Transportation, Food and Beverages, Health Care, and Utilities.

There are 105% more households who own their homes than there are renters.

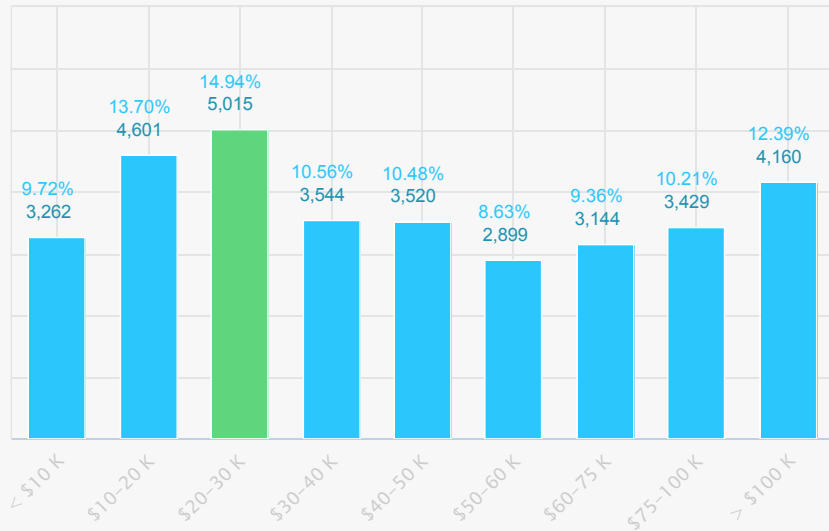


MEDIAN

**HOUSEHOLD
INCOME**
\$41,171

9% less than the county
16% less than the state
27% less than the nation

Income Distribution



How do people spend much of their money?

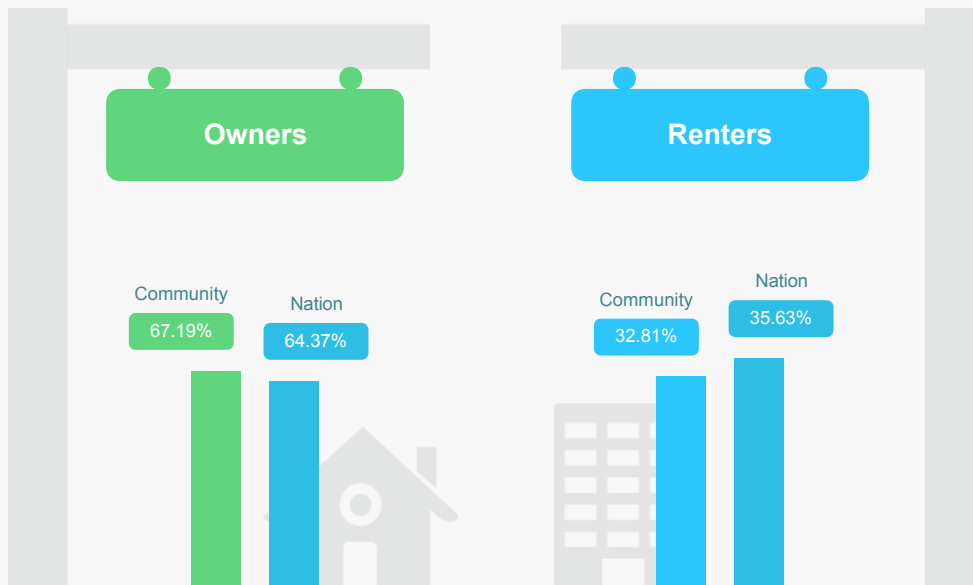
\$ PER HOUSEHOLD



The average household expenditure in Miami Gardens is:

\$44,790

HOUSING



TRANSPORTATION

Residents spend an average of 27 minutes commuting to work. Rail can be accessed within 2 miles. Interstates can be accessed 2 miles away.



Map Terrain Hybrid

des fe ment

West

Plantation FORT Lauderdale

441 858

Save to folder
Full Report
Labor Force Report
Demographics Report
Consumer Spending Report
Wages Report
Talent Pool Report
Housing Report

Miami Gardens, Florida
Population: 111,875
Labor Force Size: 54,635
Bachelors Degree or Higher: 14.99%
Household Median Income: 41,171
Commute Travel Time: 27

Miramar Hallandale Beach
Country Club Aventura
Palm Springs North North Miami Beach
Miami Lakes Opa-locka North Miami Bal Harbour
Hialeah Gardens Hialeah Surfside

Ronald Reagan Turnpike Florida's Turnpike

East Coast Buffer

Google

Map data ©2016 Google Terms of Use Report a map error