



GEORGIA DIABETES SYMPOSIUM

FOR HEALTH PROFESSIONALS



EXPERIENCE A FULL DAY OF CONTINUING EDUCATION!

Saturday, November 12, 2016

Atlanta Marriott Marquis
265 Peachtree Center Avenue
Atlanta, GA 30303
8:30 a.m. – 5:00 p.m.

CDE RN RD PHARM D CHES/MCHES

SPECIAL ACKNOWLEDGMENT

SPONSORS

This activity has no commercial support or sponsorship

SPEAKERS

Michelle Bravo, RD, CDE
Yiling Cheng, MD, PhD
Michael Crooks, PharmD
Carl Goolsby, MD
Fadi Nahab, MD
Darin Olson, MD, PhD
Monica W. Parker, MD
Fritz Jean-Pierre, MD, FACS, FASMBS
Sarah Piper, MPH, CDE
Betsy Rodriguez, MSN, DE

Ashli Owen-Smith, PhD, SM
Glenda Summerville, DNP, FNP-C, BC-ADM, CDE,
Patricia Tatro, LCSW, MSW, MSM
Whitney Wharton, PhD

PLANNING COMMITTEE

LaShonda Hulbert, MPH
Lisa Graham, RN, BSN, CDE
CaSonya Green, MA, CHES, CDE
Gerald Griffin, RPh, CDE
Jessica Knopf, MSW
Sarah Piper, MPH, CDE
Glenda Summerville, DNP, FNP-C, BC-ADM, CDE,

WELCOME TO THE 2016 GEORGIA DIABETES SYMPOSIUM FOR HEALTH PROFESSIONALS

Welcome to the 2016 Georgia Diabetes Symposium for Health Professionals, a premier learning and networking experience crafted especially for you! The Diabetes Association of Atlanta, Inc. has collaborated with the best and brightest to provide a learning experience that will hopefully ignite a new way you educate and serve those affected by diabetes. We hope participants will enjoy the multiple education sessions, keynote speakers, exhibitors and chance to meet and greet health professionals from across the region! Again, the GDS16 planning committee and agency staff extends the warmest welcome and hope you enjoy the City of Atlanta!



GDS16 REGISTRATION

Early Bird Special \$70.00

(Begins August 3rd!)

Pre-Registration \$80.00

(Begins September 8th!)

Onsite Registration \$90.00

Students \$25.00

Area Information

The Marquis is minutes away from popular Atlanta attractions such as the World of Coca-Cola, Georgia Aquarium, Centennial Olympic Park and The College Football Hall of Fame!

Special Room Rate of \$149 per night for symposium guests!

Special rate ends October 28, 2016!

Visit www.atlantamarriottmarquis.com or call 404-521-0000 to book your room today!

Valet parking is available for \$11/day. Overnight parking is \$20/day.

Public parking is available surrounding the hotel. Fees Vary.

SYMPOSIUM GOALS & OBJECTIVES



Target Audience: This comprehensive program is designed for health professionals serving the diabetes community including, but not limited to, registered dietitians, registered nurses, pharmacists, certified diabetes educators and certified health education specialists.

Learning Outcomes: The purpose of this activity is enable the learner to increase his or her knowledge of clinical and community tools that would affect their patient care and outcomes such as: the updates to the National Diabetes Prevention Program, shared medical appointments in primary care for the promotion of physical activity, continuous glucose monitoring, psychosocial effects of diabetes, effectiveness of behavioral interventions to promote medication adherence, bariatric surgery as a treatment option for individuals living with diabetes, the effect diabetes has on clients' hearing and brain function, health literacy in relation to Diabetes Self-Management Education, and finding the program that works best for their practice amongst the various types of Diabetes Self-Management Education programs. At the conclusion, the healthcare professional will have an increase in knowledge based on the topics and sessions chosen. Additionally, the healthcare professional will be able to discuss these treatment options as they deem necessary with their clients/customers/patients.

Learning Objectives: The Georgia Diabetes Symposium for Health Professionals provides an affordable opportunity for health professionals to earn multiple continuing education credits related to the AADE7 Self-care Behaviors of Diabetes Management. This program will also provide participants with the opportunity to learn about the latest research and innovation in diabetes management and patient care, applicable in both clinical and community realms. The self-care behaviors to be addressed during the symposium are: being active, monitoring, taking medication, problem solving, healthy coping, and reducing risks. Led by outstanding experts in the field, there will be robust presentations and seminars, case discussions and in depth dialogue in each session that will provide healthcare professionals the opportunity to enhance their knowledge of diabetes treatment and management.

People who are living with diabetes can attend a workshop where they can expect an afternoon of interactive classes including a healthy cooking demonstration, stress management tools, and a low-impact exercise class.

MEET THE KEYNOTE SPEAKER



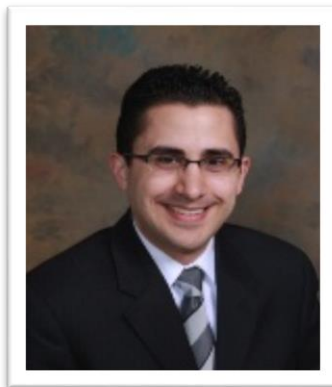
Dr. Darin Erik Olson graduated from Boston University School of Medicine in 1997. Currently, Dr. Olson specializes in Endocrinology, Diabetes & Metabolism and has over 19 years of experience in medicine. Dr. Olson has been an Endocrinologist for 12 years with a special interest in diabetes. He is currently working on several projects related to diabetes and tissue engineering with funding from the National Institute of Health (NIH), American Diabetes Association (ADA), Department of Veterans Affairs (VA), and others. Additionally, Dr. Olson has been cited in over 25 research publications. Dr. Olson is a board member for Team Type 1, a non-profit foundation to “instill hope and inspiration for people around the world affected by diabetes”. Currently, Dr. Olson sees patients in the Diabetes and Endocrine Clinics at the Atlanta Veterans Affairs Medical Center. In his free time, Dr. Olson enjoys playing soccer.

We welcome Dr. Olson to the 2016 Georgia Diabetes Symposium and look forward to his keynote address, “Exercise and Diabetes”.

MEET THE AFTERNOON PANEL



Dr. Monica W. Parker,
Assistant Professor of Neurology,
Emory University



Dr. Fadi Nahab
Medical Director of Stroke
Program/Associate
Professor of Neurology,
Emory University Hospital &
Emory University



Dr. Whitney Wharton,
Assistant Professor of
Neurology,
Emory University

GDS 16 Schedule

At-A-Glance

7:30 a.m. – 8:30 a.m.	Registration/Exhibitors/Morning Coffee
8:30 a.m. – 8:45 a.m.	Welcome/Announcements
8:45 a.m. – 9:45 a.m.	Morning Keynote
9:55 a.m. – 10:55 a.m.	Breakout Session No. 1
11:05 a.m. – 12:05 p.m.	Breakout Session No. 2
12:05 p.m. – 1:05 p.m.	Lunch / Exhibitor Break
1:10 p.m. – 2:10 p.m.	Breakout Session No. 3
2:15 p.m. – 3:15 p.m.	Breakout Session No. 4
3:15 p.m. – 3:45 p.m.	Afternoon Coffee / Exhibitor Break
3:50 p.m. – 4:50 p.m.	Afternoon Panel Discussion
4:50 p.m. – 5:00 p.m.	Closing Remarks / Program Evaluations

Accreditation

This continuing nursing education activity was approved by The American Association of Diabetes Educators, an accredited approver by the American Nurses Credentialing Center's Commission on Accreditation. This program 2016-054 is awarded **6.0** contact hours of continuing education credit.



The AADE is also accredited by the California Board of Registered Nursing (CEP#10977).

The American Association of Diabetes Educators is accredited by the Accreditation Council for Pharmacy Education as a provider of continuing pharmacy education. This program provides **6.0 contact hours (0.60 CEU's)** of continuing education credit.

ACPE Universal Activity Number: 0069-0000-16-255-L01-P; 0069-0000-16-256-L01-P; 0069-0000-16-257-L01-P; 0069-0000-16-258-L01-P; 0069-0000-16-259-L01-P; 0069-0000-16-260-L01-P; 0069-0000-16-261-L01-P; 0069-0000-16-262-L01-P; 0069-0000-16-263-L01-P; 0069-0000-16-264-L01-P; 0069-0000-16-265-L01-P

Effective Date: November 12, 2016 to November 12, 2017



Sponsored by The Diabetes Association of Atlanta, a designated provider of continuing education contact hours (CECH) in health education by the National Commission for Health Education Credentialing, Inc. This program is designated for Certified Health Education Specialists (CHES) and/or Master Certified Health Education Specialists (MCHES) to receive up to **6** total Category I continue education contact hours.



For more information regarding contact hours, please call LaShonda Hulbert at 404-527-7150 or email at lhulbert@diabetesatlanta.org

Symposium Program

Continuing Education Credit

To earn continuing education credit, you must attend the entire class session and complete a program evaluation and attendance sheet.

A Continuing Education statement of credit – reflecting hours attended at educational sessions- will be generated after completion of the evaluation process.

Requirements for Successful Completion: *For successful completion, participants are required to be in attendance in the full activity, complete and submit the program evaluation at the conclusion of the educational event.*

Activity Type: *Knowledge-Based*

7:30 a.m. – 8:30 a.m.

Registration, Exhibitors, Morning Coffee

8:30 a.m. – 8:45 a.m.

Main Ballroom

Symposium Welcome & Announcements

KEYNOTE ADDRESS

8:45 a.m. – 9:45 a.m.

Main Ballroom

1.0 CEU

Exercise and Diabetes

Darin Olson, MD, PhD

Staff Physician and Assistant Professor of Medicine, Atlanta VAMC & Emory University School of Medicine

- Explain the effects of exercise on blood sugar
- Discuss the benefits of exercise in patients with diabetes
- Analyze treatment considerations when exercising with diabetes

Breakout Session No. 1

Please select one class to attend.

9:55 a.m. – 10:55 a.m.

1.0 CEU

Overview and Update on the National Diabetes Prevention Program

Sarah Piper, MPH, CDE

Director of Training, Emory University Diabetes Training and Technical Assistance Center

- Describe the goals and structure of the National Diabetes Prevention Program (DPP)
- Compare and contrast the difference between the DSME programs and the National DPP Lifestyle Change Program
- Describe the current state of delivery of the National Diabetes Prevention Program

Using Colorful Trinkets to Help Deal with Health Literacy and Diabetes Self-Management Education

Betsy Rodriguez, MSN, DE

Deputy Director, Centers for Disease Control and Prevention

- Explain how health literacy and numeracy affect people with diabetes understanding of diabetes related health information and skill.
- Discuss at least 2 questions to discover the health literacy demand for numeracy and diabetes behavior
- List at least 2 techniques to address health literacy demands of people with diabetes

Breakout Session No. 2

Please select one class to attend.

11:05 a.m. – 12:05 p.m.

1.0 CEU

Shared Medical Appointments in Primary Care for Diabetes

Carl Goolsby, MD

Medical Doctor/Family Practice, WellStar East Paulding Primary Care Center

&

Glenda Summerville, DNP, FNP-C, BC-ADM, CDE

Family Practice Nurse and Certified Diabetes Educator, WellStar East Paulding Primary Care Center

- Discuss the utilization for Shared Medical Appointments for People with Diabetes
- Identify planning process and staff roles involved in Shared Medical Appointments
- Discuss the challenges observed to date in implementing Shared Medical Appointments

Effectiveness and Efficiency with Real Time Continuous Glucose Monitoring

Michelle Bravo, RD, CDE

Senior Territory Business Manager, Dexcom, Inc.

- Discuss effectiveness and efficiency with real time Continuous Glucose Monitoring
- Discuss the utility of the new continuous Glucose Sensors in diabetes care

12:05 p.m. – 1:05 p.m.

Main Ballroom

Lunch & Exhibitors

Breakout Session No. 3

Please select one class to attend.

1:10 p.m. – 2:10 p.m.

1.0 CEU

Trends in Hearing Impairment and Its Association with Diabetes

Yiling Cheng, MD, PhD

Epidemiologist, Centers for Disease Control and Prevention

- Describe the burden of hearing impairment among persons with diabetes
- Demonstrate the trends in hearing impairment among person with and without diabetes
- State the association of diabetes and hearing impairment

Diabetes Treatment: More than Medical

Patricia Tatro, LCSW, MSW, MSM

Community Diabetes Support Social Worker, Children's Healthcare of Atlanta

- Identify the various factors that influence diabetes management
- Discuss the role of the mental health provider in diabetes management
- Identify psychosocial factors in diabetes care

Breakout Session No. 4

Please select one class to attend.

2:15 p.m. – 3:15 p.m.

1.0 CEU

Promoting Adherence to Improve Effectiveness of Cardiovascular Disease Therapies: The Prompt Study

Ashli Owen-Smith, PhD, SM

Assistant Professor of Health Management and Policy, Georgia State University

- Describe the current state of the literature related to behavioral interventions for improving medication adherence among individuals with cardiovascular disease and/or Type 2 diabetes
- Explain the Prompt Intervention methods and results
- Discuss the implications of the Prompt Intervention results and propose how these findings might be disseminated to and used by other health care delivery systems.

Bariatric & Metabolic Surgery for the Treatment of Metabolic Disorders

Fritz Jean-Pierre, MD, FACS, FASMB

Medical Director of Bariatric Surgery and Bariatric Surgeon, WellStar Kennestone Regional Medical Center

- Discuss the current surgical options available for the treatment of morbid obesity and obesity related co-morbidities including Type 2 diabetes.
- Discuss the physiological changes created with bariatric surgery and how they may lead to metabolic improvements

Find the Right Fit: Diabetes Education Program Options for Your Practice

Michael Crooks, PharmD

Pharmacy Interventions Technical Lead and DEEP lead trainer, Alliant Quality

- Describe 4 types of Diabetes Self-Management Education (DSME)
- Compare the various types of DSME programs
- List Medicare benefits for DSME, Medical Nutrition Therapy and Diabetes Prevention Program

3:15 p.m. – 3:45 p.m.

Afternoon Coffee Break

Afternoon Panel Discussion

3:50 p.m. – 4:50 p.m.

Main Ballroom

1.0 CEU

Diabetes and Brain Health: Prevent Disease and Preserve Function

Monica W. Parker, MD

Assistant Professor of Neurology, Emory University

Fadi Nahab, MD

Medical Director, Stroke Program, Emory University Hospital & Emory University

Whitney Wharton, PhD

Assistant Professor, Emory University

- Define Alzheimer's and other Dementias and the relation to patients with Diabetes
- Discuss how Diabetes contribute to brain and vascular disease
- Explain the need for diversity of participants in clinical research participation for Alzheimer's and Diabetes

4:50 p.m. – 5:00 p.m.

Main Ballroom

Closing Remarks/ Program Evaluations

Diabetes

Association of Atlanta



ABOUT US

Our mission is to promote community awareness and healthy living to aid in the prevention and management of diabetes through innovative community programs.



SERVICES



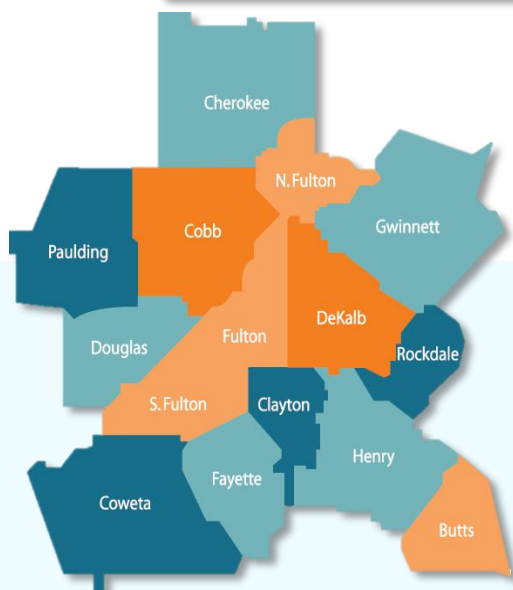
Self-Management Education



Early Detection



Medical Assistance Program



The Diabetes Association of Atlanta, Inc. is a non - profit agency providing services to the people affected by diabetes living in the thirteen county metro Atlanta areas.



404-527-7150



diabetes@diabetesatlanta.org



@diabetesatlanta



Like our Page!

100 Edgewood Avenue, Suite 1004, Atlanta, GA 30303

To learn more about DAA or to request our services, please visit:

www.diabetesatlanta.org

This image shows a single sheet of white paper with horizontal ruling lines. The lines are evenly spaced and run across the width of the page. There are no margins, text, or other markings on the paper.

Diabetes Association of Atlanta, Inc.
100 Edgewood Avenue, Suite 1004, Atlanta, GA 30303