



**FOR IMMEDIATE RELEASE**

## **IPD Announces Friction Welded Pistons for Selected Caterpillar® C-Series Engines**

Torrance, California (March 9, 2017) – IPD, a leading aftermarket manufacturer of engine parts for heavy-duty diesel engines, announces the launch of repair parts for heavy-duty Caterpillar C18, C27, and C32 engines.

Friction welded pistons represent one of the more recent evolutionary designs used in construction industry engines. **IPDSteel®** friction welded pistons are engineered and manufactured by IPD as a high quality and cost effective alternative to the dealer, and are exclusively available in the aftermarket only from IPD. All **IPDSteel** pistons are manufactured by IPD in Torrance, California (USA).

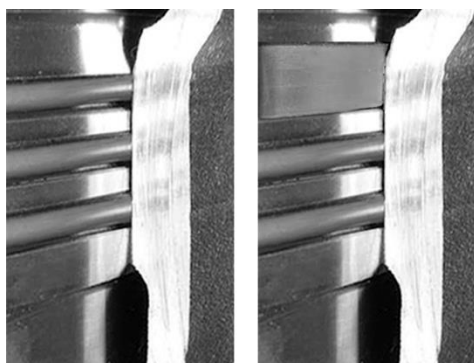
**IPDSteel®** friction welded pistons are packaged in IPD Cylinder Kits (piston, rings, pin, cylinder liner, and retainers). IPD offers these kits with your choice of cylinder liners...original style or IPD's optional "crevice seal" design (available exclusively from IPD). IPD's crevice seal design provides a more secure fitment, reducing liner movement and extending the life of the o-rings and the lower bore in the block.



*Figure 1: **IPDSteel** friction welded piston for C18/C32 engines*



*Figure 2: IPD cylinder kit for C27 engines*



*Original style cylinder liner*

*IPD style "crevice seal" cylinder liner*

IPD repair parts are available for a wide range of construction equipment applications, including tractors, off-highway trucks, dozers, loaders, excavators, haulers, generators and more.



"IPD is the preferred brand in the marketplace for Caterpillar C-Series engine repair parts," notes Egan Hernandez, Marketing Manager for IPD. "We recognize a need in the construction industry for high quality, reliable, and cost effective repair/replacement parts, especially for C-Series engines. **IPDSteel** piston designs include 2-piece (articulated), 1-piece, and friction welded steel, and are available for a wide range of Caterpillar engine applications."

# # #

#### **Contact**

Egan Hernandez  
IPD Marketing & Communications  
[ehernandez@ipdparts.com](mailto:ehernandez@ipdparts.com)

---

#### **About IPD®**

Since 1955, Industrial Parts Depot (IPD) has focused on manufacturing high quality replacement parts, and providing equipment owners an alternative to purchasing original parts from OEM dealers. IPD is known for Quality Products, Technical Innovation, and Superior Customer Service and Support. IPD's product line includes diesel and natural gas replacement engine parts for Caterpillar®, Cummins®, Detroit Diesel®, Waukesha® and Volvo® engine applications\*.

#### **About IPDSteel®**

IPDSteel is a line of innovative steel construction pistons designed, engineered, and manufactured by IPD in Torrance, California (USA) for heavy-duty engines. These designs are unique in the aftermarket, and are exclusively offered by IPD.

#### **About IPDStyle™**

IPDStyle parts are designed, engineered, and/or configured to improve upon original equipment designs. These parts are offered as alternatives to original designs.

*\*All manufacturers' names, numbers, symbols and descriptions are for reference only. It is not implied that any part is the product of the manufacturer. Caterpillar® and Cat® are registered trademarks of Caterpillar Inc.*