

- Shift Traded away (STS) will not be considered pensionable service; no pension deductions will be taken

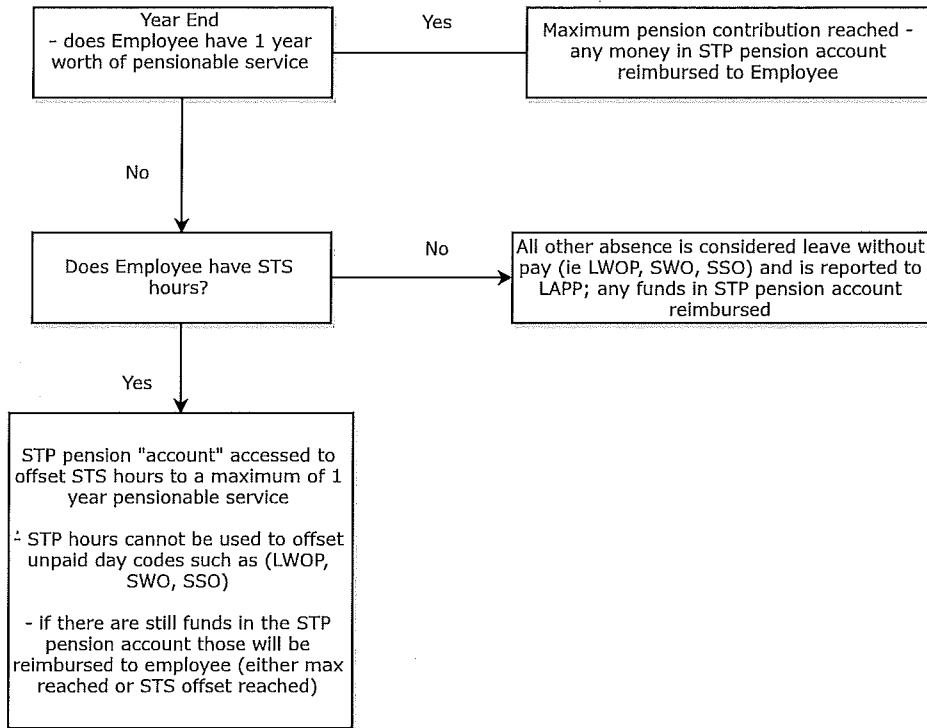
NEW shift trade pick up (STP) will now have employee pension deductions applied; will be held in a separate pension account during year

- The City's employer contributions on shift trade pickup (STP) shifts will also be held in an account for the year end reconciliation

- End of year (or upon resignation/retirement/termination) Employee Service Centre will review ATU members pensionable service

- If employee has STS hours then the funds held in the STP pension account will be accessed to offset STS only

- Can only offset STS to a maximum of 1 year pensionable service (when combined with all pensionable service in same calendar year)



NOTE: this only applies to employees still contributing to LAPP. If you no longer contribute no pension deductions occur