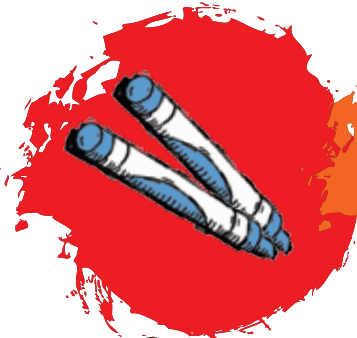


Art Guidelines

Creating great art is key to a successful program. Based on our experience, we've put together some tips for you to follow.

What works best



Crayons

Be sure that students press hard for a rich color!



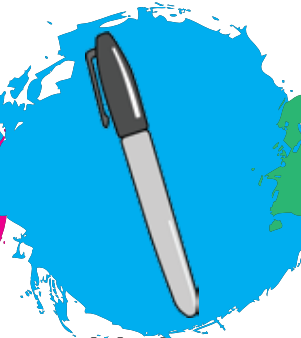
Watercolors

Bright bold colors will look great. Just go easy on the water.



Paper

Use our paper for the best results.



Markers

Bright bold colors reproduce best. Black is great for outlining. Just remember no fluorescents!



Tempera Paint

Intense colors reproduce best. Use caution with the amount of paint, as it can crack and crumble.

Tips & Tricks for best results



If creating hand-print art, fill the entire sheet of paper with color

Keep important details like names or dates, 1" from the edge



Bold colors & borders add fun & interest



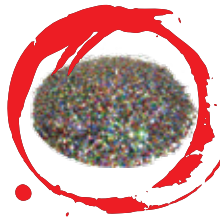
Fill all of the space edge-to-edge

Be sure to glue everything well so pieces are secure. (We'd hate for a roof to fall off a house while it's being shipped here.)



Skip the Glitter!

We don't like to put restrictions in place, however there are few things that we just can't accept. Here's the low down on the items that make the "Do Not Use" list ...



Glitter

Glitter is like a curse word on our production floor! The pretty sparkle it has when added to your art project, isn't so pretty when scanned for reproduction. The reflection of the light can cause it to appear as dark specs. Those sparkles get into our equipment, and that's not so pretty either! So, please save the glitter for another project.

Fluorescent and Metallic

Again, they may look shiny & bright on paper, but they do not reproduce with the vivid brightness as do markers & paint. Often colors will come out dull, or not true to color (i.e. pinks will look purple.) To avoid disappointment, we ask that you skip the glow & shine and stay with more traditional colors for this project.



3D and Abrasives

Abrasives are just that ... abrasive. Sand, salt, globs of glue/paste can create scratches on our equipment, which will in turn appear on products. 3D objects (cotton balls, foam cutouts and those crazy googly eyes) are not 3D when reproduced. Actually they can cause shadowing and become flattened during our production process.

Chalk and Oil Pastels

We are sure you know what a mess it can be working with pastels. Often in transit, they can smudge and stick together, and create an even bigger mess. If you do choose to use them, please do so with caution and they MUST be sprayed with a fixative such as Krylon #1311 Matte Fixative or we will not be able to process them.



Trademark and Copyright images

Based on federal regulations, we can't accept any Trademark or copyright images. This includes cartoon characters (Disney, Nickelodeon etc.) and trademark logos (Nike, Pepsi etc.) Images that are cut from magazines & books used in paper collages, are also a no-no. We encourage you to be creative, Please don't send in pages torn from a coloring book.

It's all about the paper.

We highly recommend that you use the free high-quality art paper that we provide. However if you don't wish to, there are a few "rules" that we have:

- Size matters! All paper must be 8 1/2" x 11". We recommend a paper weight of 60-70#
- Construction paper. While it can enhance an art project, construction paper often does not reproduce true to color. Blues can look purple, blacks can be green, etc. If you must use construction paper, please ensure it is a high quality paper. We still can't guarantee a completely accurate reproduction even with the high quality paper, however the better paper does tend to reproduce more acceptably.

Avoid "playing on the edge." What exactly does that mean?

- Keeping details such as names, date etc. away from the edge. During reproduction items that are within 1" from the edge could be trimmed. This is especially true on our full bleed products (key chains, tiles, mouse pads...)
- Adding a 1" colorful border to help younger artists stay within the area.
- If pencil guide is drawn, be sure that it is completely erased, otherwise it will appear on finished products.



REMEMBER TO ...

Flip over artwork and using pencil add artist's name, school, class & grade to the back of the artwork.

Mark the "Top" with a T to ensure correct orientation.