

Weekly Executive Summary of April 28, 2017

Delaware Area Career Center: South Campus Consolidation of Facilities

Completed Activities

- Installation of underground plumbing in Area B
- Installation of underground electric in Area A
- Reconstruction of the existing LGIA
- Placement of concrete footings in Area J and at temporary enclosure wall
- Installation of light pole bases in the South Parking Lot

Ongoing Activities

- Installation of light pole bases in parking lots
- Spreading top soil for final grading
- Installation of underground plumbing in Area C
- Installation of underground electric in Areas B and C
- Installation of primary electric service line
- Metal stud framing Areas D and E
- Sheathing the exterior of Areas D and E
- Installation of gravel base for parking lots
- Roofing Areas A through E
- Construction of masonry firewall

Upcoming Activities

- Landscape seeding throughout the site
- Grouting masonry foundations
- Placement of concrete curbs and asphalt around the site
- Installation of oil and grease interceptors in the courtyard
- Next scheduled OAC Meeting: 5/4/17

Construction Milestones

- Starting placement of interior concrete slabs on grade by 5/1/17

Link to drone video of the site:

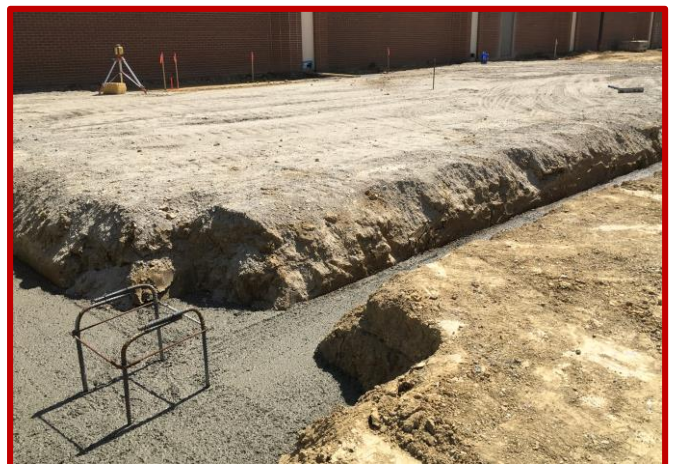
<https://elford.sharefile.com/d-se2b4834f91547e1b>



Picture 1: Sheathing along the West side of Area D in Student Dining



Picture 2: Topsoil relocation from the edge of the South Parking Lot



Picture 3: Newly placed concrete footing at Area J's addition

Weekly Executive Summary of April 28, 2017

Delaware Area Career Center: South Campus Consolidation of Facilities



Picture 4: Placement of concrete footing at the temporary wall at column line 21 in Area D



Picture 5: Placement of geotextile fabric under gravel at the North Access Drive Parking Lot



Picture 6: Underground electrical conduit runs in Area A labs