

# Weekly Executive Summary of February 17, 2017

## Delaware Area Career Center: South Campus Consolidation of Facilities

### Completed Activities

- Approval of GMP No. 3 by the Board of Education
- Installation of structural steel columns, beams, and joists in Areas A & B
- Completion of the elevator pit

### Ongoing Activities

- Delivery & installation of structural steel for Areas B and C
- Placement of concrete foundations in Area F
- Grouting and backfilling of CMU foundations
- Relocating technology and utility pathways
- Installation of storm structures at the retention ponds

### Upcoming Activities

- Installation of new waterline through the existing parking lot
- Finishing of the building pad for Areas C and D
- Finishing the remaining concrete foundations in Area C
- Installation of remaining storm structures
- Flushing the new water line system
- Gas line connection to temporary meter from Columbia Gas
- Next scheduled OAC Meeting: 3/2/17

### Construction Milestones

- Finish of Structural Steel for Areas A, B, and C by 2/24/17

Link to drone video of the site:

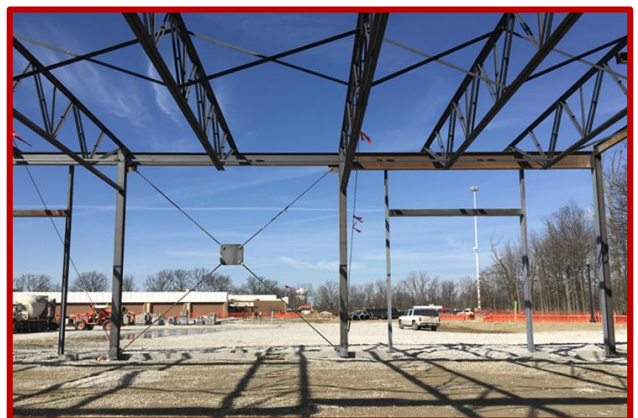
<https://elford.sharefile.com/d-s63cfcd09c9346a48>



Picture 1: The elevator pit installed in Area D



Picture 2: Progress on the building pad in Area D



Picture 3: Inside Area A; future home of Power Line instruction

# Weekly Executive Summary of February 17, 2017

---

Delaware Area Career Center: South Campus Consolidation of Facilities



**Picture 4:** Steel trusses being lifted into place in Area B



**Picture 5:** Progress in Area A; columns beams, and trusses