

Weekly Executive Summary of June 15, 2018

Delaware Area Career Center: South Campus Consolidation of Facilities

Construction Activities

Completed

- Installation of Spandrel Glass in the Connector
- Installation of Mezzanine Guardrails
- Installation of Ceiling Tile in Restrooms, Offices, and Shared Classrooms in the East-West High Bay Lab Corridor
- Setting of Energy Distribution Systems in Kitchens
- Selective Demolition in the Health Tech Area
- Delivery of Casework
- Installation of Elevator Shaft Lining
- Asbestos Abatement in the Existing Building

Ongoing

- Installation of Fire Alarm Devices
- Installation of Rubber Wall Base
- Finishing of Drywall in the Admin Area
- Installation of Branch Gas Line to RTU's
- Installation of Masonry Veneer on the North side of the Connector
- Installation of Argon/CO₂ and Compressed Air Pipe Drops in Welding High Bay Lab
- Installation of Storefront Doors
- Painting of Drywall on the Second Floor
- Installation of Curtainwall in the Connector

Upcoming

- Installation of Ceiling Grid in Student Dining
- Installation of Casework
- Installation of Terra Cotta Wall Panels
- Installation of Downspout Boots
- Delivery and Installation of Dressing Room Compartments and Toilet Partitions
- Painting of Drywall in the Admin Area

Request For Information

- RFI's to Date: 284
- Open RFI's: 4
- Urgent: 1



Picture 1: Spandrel Glass in the Connector Courtyard



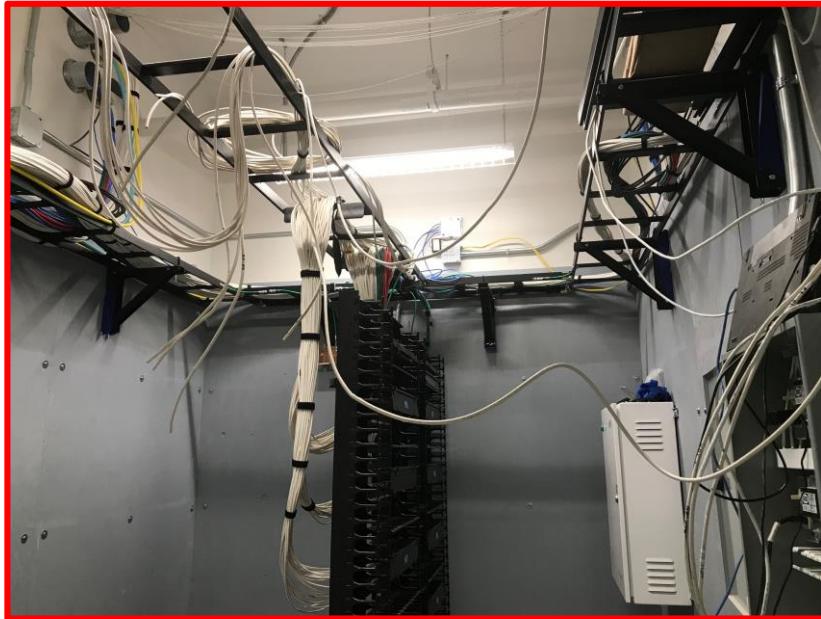
Picture 2: Energy Distribution System in the Main Kitchen



Picture 3: Selective Demolition in the Health Tech Area

Weekly Executive Summary of June 15, 2018

Delaware Area Career Center: South Campus Consolidation of Facilities



Picture 4: Progress in Technology Room (TR4)



Picture 5: Ceiling Tile in Shared Classroom between Power Lines and Construction Tech Labs

Weekly Executive Summary of June 15, 2018

Delaware Area Career Center: South Campus Consolidation of Facilities



Picture 6: Selective Demolition Progress in the Existing Building