

# Weekly Executive Summary of May 4, 2018

## Delaware Area Career Center: South Campus Consolidation of Facilities

### Construction Activities

#### Completed

- Base and Intermediate Coat of Asphalt Paving in Courtyard
- Elevator Pit Prep for Elevator Install
- Installation of Elevator Shaft Walls
- Drywall Finishing on the Second Floor
- Installation of Walk Mats on the Roof
- Installation of Main Gas Line on the Roof

#### Ongoing

- Installation of Blocking in the Admin Area
- Painting of Drywall on the Second Floor
- Installation of Roofing over the Connector Area
- Installation of Ductwork at Professional Food Service, Culinary Arts, Main Kitchen Areas, and Second Floor
- High Performance Coating application in the High Bay Lab areas
- Installation of Plumbing and Light Fixtures in High Bay Labs
- Painting of Accent walls throughout the building
- Slab on Grade pours in Connector

#### Upcoming

- Installation of Metal Fascia and Soffit around the High Bay Areas
- Installation of Drywall and Insulation in the Admin Area
- Placement of Curbs in Courtyard
- Permanent Power to the Building
- Casework Delivery and Installation
- Elevator Installation
- Installation of Branch Gas Line to RTU's

#### Request For Information

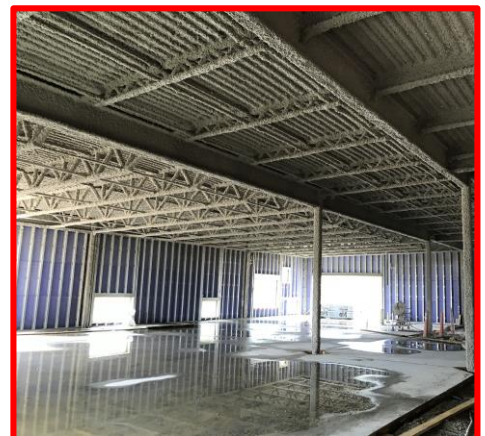
- RFI's to Date: 248
- Open RFI's: 5
- Urgent: 1



**Picture 1:** Progress in Engineering Tech Classroom



**Picture 2:** Progress in Shared Classroom between Auto Tech and Engineering Tech



**Picture 3:** Progress in Early Childhood Development Area

# Weekly Executive Summary of May 4, 2018

Delaware Area Career Center: South Campus Consolidation of Facilities



**Picture 4:** Asphalt Paving in Courtyard



**Picture 5:** Progress in Growth Space on Second Floor



**Picture 6:** Southwest Entry Canopy and Glazing

# Weekly Executive Summary of May 4, 2018

Delaware Area Career Center: South Campus Consolidation of Facilities



**Pictures 7, 8:** Main Gas Line on Roof



**Pictures 9, 10:** Walk Mats on Roof