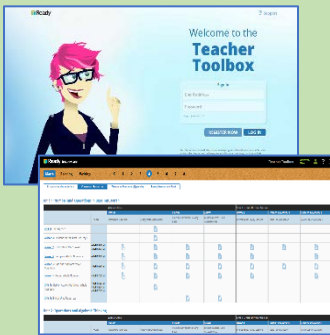


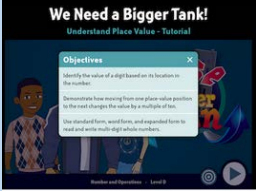
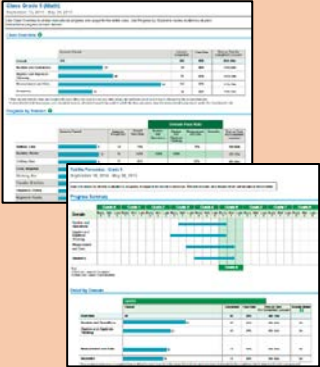
i-Ready & Teacher Toolbox: Best Practices for Math RtI (17-18)

RtI requires a blend of computer-based instruction and teacher-led classroom instruction. Here's how you can accomplish both with i-Ready & the Teacher Toolbox!

Supporting Teacher-Led Instruction with i-Ready and Teacher Toolbox

Step	Report/Resource to Use	What this report will tell you
1. Pinpoint strand(s) of need through progress monitoring	easyCBM	Use easyCBM reports to see which strand(s) students' remedial work should focus on
2. Pinpoint skills deficit with i-Ready Reports	Student Profile Report (for individual students)	This report shows specific skills students have mastered and the skills needing intervention, based on i-Ready Diagnostic Data.
	Instructional Grouping Profile Report (run for class or instructional group)	This report shows skill deficits requiring face-to-face intervention in small groups, based on i-Ready Diagnostic data.
3a. Use Teacher Toolbox to gather Teacher-led instructional resources	<p><u>NEW for 17-18: All schools now have access to the Teacher Toolbox!</u></p> <p>This means schools have access to our full Ready TN K-8 curriculum and other supplemental instructional materials to support RtI and progress monitoring.</p> <ol style="list-style-type: none"> 1. First, locate the grade-level and the strand of need in the Toolbox. 2. Second, find the skill in question, based on the Ready TN lesson name. 3. Third, gather the instructional resources available, which are housed in the same row of that lesson/skill. The resources available are: 	
	Ready TN Lessons	Ready TN is a full K-8 math curriculum, available for download via the Toolbox.
	Interactive Whiteboard Lessons	Hand-selected i-Ready lessons that provide students with engaging online instruction that is ideal for face-to-face group instruction.
	Tools for Instruction	Downloadable lesson plans teachers can use to address skill deficit in face-to-face instruction. Find these organized by domain/skill in the Toolbox, or by grade in the i-Ready Resources Tab.
	Center Activities	Student-led activities built for small groups across grade levels.
	Skills Practice & Assessments	Both are available via the Toolbox.



<p>3b. Use i-Ready instructional resources</p> 	<p>Skill-specific, teacher-assigned “Extra” Lessons</p> <p>Tools for Instruction (TFI)</p> <p>Automated Online Lessons</p>	<p>Teachers can add <i>Extra, skill-specific lessons</i> to student i-Ready accounts to drive focus on intervention. Student can access these lessons by clicking the blue button on their dashboard, keeping their automated path (green button) separate.</p> <p>Find student or group-specific recommended TFIs in the Student Profile Report and Instructional Grouping Profile Report, find a TFI full library in the Resources Tab, and find them based on strand/skill in the Teacher Toolbox (see note above).</p> <p>Students receive an automated lesson path based on Diagnostic results, instructing them in skills they are ready to learn.</p>
<p>4. Review Progress</p> 	<p>i-Ready Class Response to Instruction & Student Response to Instruction Reports</p>	<p>As a supplement to your easyCBM progress monitoring assessments, i-Ready reports can allow easy monitoring of instructional progress <i>by strand</i> for your students. Run the <i>Class</i> report for your class or RtI Tier-based Instructional Groups. Teachers can drill down to <i>individual student</i> reports as well.</p> <ul style="list-style-type: none"> Fields seen in these reports: <ul style="list-style-type: none"> Number of lessons completed, passed, and in-progress (overall and by strand) Lesson pass rate (overall and by strand) Time on task (overall and by strand) Strand (domain) shut-off alerts for struggling students

