





2017 ROCKSTAR ENERGY DRINK MOTOCROSS NATIONALS INFORMATION PACKAGE

Welcome to the 2017 Rockstar Energy Drink Motocross Nationals. Please take the time to review the information within this package, as there have been changes from previous years. It is also important to take note that any rules contained within this package are superseded by those found in the 2017 Pro Rulebook, or any amendments posted as of the current date.

2017 ROCKSTAR ENERGY DRINK MOTOCROSS NATIONALS – SERIES SCHEDULE

Sunday, June 4	Whispering Pines Raceway, Kamloops, British Columbia
Sunday, June 11	Blackwater MX Track, Prince George, British Columbia
Sunday, June 18	Wild Rose MX Park, Calgary, Alberta
Sunday, June 25	Moto Valley Raceway, Regina, Saskatchewan
Sunday, July 9	Gopher Dunes, Courtland, Ontario
Sunday, July 16	Motocross Ulverton, Ulverton, Quebec
Sunday, July 23	Pleasant Valley Motorsport Park, Truro, Nova Scotia
Sunday, July 30	Riverglade MX Park, Moncton, New Brunswick
Sunday, August 6	Motocross Deschambault, Deschambault, Quebec
Sunday, August 13	RJ Motorsport Park, Barrie, Ontario

FORMAT FOR SUNDAY NATIONAL

Friday	- 11:00am – 5:00pm Move in
Saturday	- 1:00pm – 4:00pm Pro Sign-in
	- 1:00pm – 5:00pm Tech Inspection
	- 3:00pm – 4:00pm Team Managers Meeting

Absolutely NO Sign-In on Race Day

MX1/MX2 Pre Entry Fee:	\$85 (CDN/USD) per class
MX1/MX2 Post Entry Fee:	\$100 (CDN/USD) per class



2017 ROCKSTAR ENERGY DRINK MOTOCROSS NATIONALS INFORMATION PACKAGE

PIT PARKING

All pit parking is pre-assigned. Move-in is to take place on the Friday of the National weekend at the times listed below. Any teams attempting to park without authorization prior to the designated time will be subject to a fine of \$150.00. All rental vehicles to be parked in public parking.

Recognized Factory Teams:	11:00am Friday
Pro Privateers:	1:00pm Friday
Women:	3:00pm Friday
Amateur Parking:	5:00pm Friday

Any Privateers, Women or Amateurs attempting to park before their designated time are subject to removal. Absolutely no Amateurs or Women racers are permitted to park within the designated Pro Pits.

RACE FORMAT AND ELIGIBILITY

Motos:	MX1 Pro	30 minutes + 2 laps
	MX2 Pro	25 minutes + 2 laps
Qualifiers:	MX1/MX2 Pro	15 minute timed qualifiers
	MX1/MX2 Pro	10 minute timed Last Chance Qualifiers (LCQ)
Eligibility:	MX1	Open to all CMRC Pro, AMA Pro or A ranked riders only. Out of Canada participants must submit proof of Pro ranked status when applying for a Pro license.
	MX2	Open to all CMRC Pros and Intermediates (except former Canadian National Champions within the past <i>five</i> years), AMA A and B ranked riders. Riders that finished in the top 20 <i>overall</i> at the AMA Outdoor Nationals (250 and 450) or FIM GPs (MXGP/MX2/MX3), or top 10 <i>overall</i> in the AMA Supercross (450) class and CMRC MX2 Champions within the past five years will not be eligible to compete in the MX2 Pro/Am class.

All participants must hold a full 2017 CMRC License in order to compete in their respective class. Licenses can be purchased on-site, however it is recommended one is purchased in advance in order to receive an assigned racing number.

Procedure to Obtain a Pro License

All Canadian residents must be ranked as a CMRC Intermediate or Pro to compete in the MX2 Pro/Am class, or a CMRC Pro for MX1 Pro. Intermediates must obtain upgrade points through CMRC sanctioned events to be upgraded to a Pro.

For out of country racers, you must have a minimum of an AMA B (Equivalent of a CMRC Intermediate ranking) license to compete in the MX2 Pro/Am. For the MX1 class, a minimum of an AMA A license (Equivalent of a CMRC Pro) is required. Listed are the steps to take to acquire a CMRC Pro or Intermediate license.

Online

- 1) Go to the Member Services option on the home page of www.cmrcracing.com (top right corner). Follow procedures to purchase license. If you are not ranked with CMRC you will have to register as a Beginner – don't worry about the number you select.
- 2) Once you have purchased a license, email wendy@cmrcracing.com, and inform her that you have purchased your license but need your ranking upgraded to an Intermediate or Pro. You must provide proof of your B/A/Pro status in order to be upgraded (scan your license and email or provide proof of results in your requested class). Request a three digit number.

Print

- 1) Download a 2016 CMRC Eastern license application by visiting www.cmrcracing.com – Corporate – License Holders – Competition License Applications. Print, fill out the application in full and mail. Be sure to include proof of your B/A/Pro status.

250 TWO-STROKE RULE FOR MX2

- 1) The bike must remain in stock form from the intake manifold to the exhaust port, and all engine parts between those two points. All engine parts (ie. cylinder, cylinder head, piston, rings, rod, etc.) must be OEM for that year model.
- 2) Intake manifold is defined from the rubber boot clamps to the carburetor. No porting or headwork allowed.
- 3) There are no restrictions on pipes or mufflers other than the fact that they must meet the sound rules.
- 4) CMRC will be conducting random engine checks throughout the series. CMRC will have a cylinder, cylinder head and piston from each manufacturer for comparison.
- 5) Any bikes found to be modified will be excluded from the results of the day's competition.



2017 ROCKSTAR ENERGY DRINK MOTOCROSS NATIONALS INFORMATION PACKAGE

- 6) Aftermarket pistons, rings and crankshafts are permitted providing they have the stock OEM specifications.
- 7) Additionally, a rider may not switch from a two-stroke to a four-stroke or visa-versa. The type of machine on which a rider begins the series is to be used to the completion (ie. Start on a two-stroke, finish on a two-stroke).
- 8) Modifications or replacement parts will be deemed as being illegal if they are not listed above.
- 9) Any rider that had an overall series finish in the top five at the CMRC Pro Nationals within the last three years is not eligible to compete on a two-stroke.
- 10) Only riders that are Canadian residents are permitted to compete on a two-stroke.
- 11) Top five finishers of the MX1 class in the 2017 Nationals and beyond will not be eligible to compete in the MX2 class for the following three years.

Credentials: Credentials are not mandatory, but allow for free gate admission for Pro riders and discounted gate fees for mechanics and team personnel. More information on Credentials can be found under the “Credentials” heading below. Credentials will not grant automatic access to the mechanics area. It will be mandatory to have an event wristband accompany the credential.

Track Access: Track access is limited to one mechanic per rider and one recognized team manager. Access to the starting area, mechanics area or the track will be provided upon presentation of the mechanic’s wristband. Riders will not be permitted to be on the track or within the mechanics area during a practice, qualifier, LCQ or moto other than when they are competing.

Event Wristband: All mechanics and team managers requiring track access must obtain an event wristband from the CMRC Pro Administration Trailer on Saturday for Sunday Nationals during the Pro sign in times and sign the appropriate waiver form regardless if they have series credentials. Absolutely NO wristbands will be issued on the National race day or outside of the designated sign-in times.

NATIONAL DAY SCHEDULE

- 7:30am	Pro Riders Meeting
- 8:00am	MX2 Pro Practice - Group 1
- 8:17am	MX2 Pro Practice - Group 2
- 8:35am	MX1 Pro Practice - Group 1
- 8:52am	MX1 Pro Practice - Group 2
- 9:10am	Track Maintenance
- 9:20am	MX2 Pro Timed Qualifier - Group 1
- 9:40am	MX2 Pro Timed Qualifier – Group 2
- 10:00am	MX1 Pro Timed Qualifier – Group 1
- 10:20am	MX1 Pro Timed Qualifier – Group 2
- 10:40am	Track Maintenance
- 10:50am	MX2 Pro Timed LCQ
- 11:05am	MX1 Pro Timed LCQ
- 11:20am	Track Maintenance
- 11:50am	Opening Ceremonies
- 12:00pm	MX2 Hot Lap
- 12:10pm	MX2 Moto #1
- 12:45pm	Track Maintenance
- 1:10pm	MX1 Pro Hot Lap
- 1:20pm	MX1 Pro Moto #1
- 2:00pm	Track Maintenance
- 2:30pm	MX2 Pro Hot Lap
- 2:40pm	MX2 Pro Moto #2
- 3:15pm	Track Maintenance
- 3:45pm	MX1 Pro Hot Lap
- 3:55pm	MX1 Moto #2

The top three Pro finishers for each respective class will be interviewed on stage after the first moto plus the top three overall for the day after the completion of the second moto's top three finishers' interview.



2017 ROCKSTAR ENERGY DRINK MOTOCROSS NATIONALS INFORMATION PACKAGE

PAYOUT SCHEDULE PER MOTO (MX1 & MX2)

MX2

1)\$400 2)\$300 3)\$250 4)\$200 5)\$175 6)\$160 7)\$150 8)\$140 9)\$135 10)\$130 11)\$125 12)\$120 13)\$115
14)\$110 15)\$105 16)\$100 17)\$95 18)\$90 19)\$85 20)\$80 21)\$75 22)\$70 23)\$65 24)\$60 25)\$40 26)\$25
27)\$25 28)\$25 29)\$25 30)\$25

MX1

1)\$1000 2)\$600 3)\$500 4)\$400 5)\$350 6)\$300 7)\$275 8)\$250 9)\$225 10)\$210 11)\$200 12)\$190
13)\$180 14)\$170 15)\$160 16)\$145 17)\$135 18)\$125 19)\$115 20)\$110 21)\$100 22)\$90 23)\$80
24)\$70 25)\$60 26)\$50 27)\$40 28)\$35 29)\$30 30)\$30 31)\$30 32)\$30 33)\$30 34)\$30 35)\$30
36)\$25 37)\$25 38)\$25 39)\$25 40)\$25

Cancellation – in the event of a moto cancellation due to rain or inclement weather, payback will be based on the number of motos completed.

Points Structure

Points will be awarded to top the 25 per moto as follows:

Top 25 Points Structure (For Pro Nationals only)

1.30 2. 27 3. 25 4. 23 5. 21 6. 20 7. 19 8. 18 9. 17 10. 16 11. 15 12. 14 13. 13 14. 12 15. 11 16. 10 17. 9 18.
8 19. 7 20. 6 21. 5 22. 4 23. 3 24. 2 25. 1

SOCIAL MEDIA/NETWORK POLICY AND DEFINITIONS

Social Media is a broad term for websites and apps that allow information to be shared through online social interactions, for example social networks, blogs, and discussion forums.

Social Networks is a form of social media for sharing information with connected friends or followers, for example Facebook, Twitter, Snapchat, and Instagram.

Social media/network represents the best communications opportunity for a growing number of riders, teams, and fans. We are all ambassadors for the sport of Motocross and the national series. Others can interpret what we post as being supported by our own teams and sponsors

Riders, Teams, and Mechanics are encouraged to embrace social media throughout the series while using these guidelines:

- Understand that during the Rockstar Energy Drink MX Nationals you are representing your team, sponsors, and the CMRC. There are no “off hours” when it comes to social media.
- Accept that everything is “on the record” and very public. The ability to share social media communication is very powerful and anything sent to a few can be shared with thousands in a matter of seconds.
- Choose your message wisely, you are helping the National Series, your team/sponsors, and the CMRC when you keep your communication positive by, for example, thanking fans, and encouraging other riders. This helps the Series grow and we very much appreciate it.
- You hurt our Series, your team and sponsors if you deliver or distribute (by sharing or retweeting) negative messages towards fans, other teams and riders, or sexist, racist, or homophobic slurs or comments.
- CMRC respects your right to publically express your personal views, but you must not participate in activities that may compromise CMRC’s image or reputation. This includes posting or sharing disparaging, defamatory, embarrassing or harassing comments about Promoters, CMRC staff, race officials, team members, mechanics, and fellow riders.
- You can and will be fined for anything the Promoter decides is bringing the Series and the CMRC into “disrepute.”
- Managers, mechanics, other team personnel, and Series Officials who deliver such negative messages via social media are subject to the same discipline.
- Social Media allows wide sharing information so protecting your team, sponsors, and the image and reputation of CMRC depends upon our shared commitment. We must all understand what is expected of us when using social media to ensure that our brand and reputation are protected and that standards of professionalism, honesty and integrity are upheld.
- This new policy is supported by the motorcycle manufacturers and major industry partners.



2017 ROCKSTAR ENERGY DRINK MOTOCROSS NATIONALS INFORMATION PACKAGE

Fines for inappropriate social media communication:

- 1st infraction - the inappropriate communication will be forwarded to all of the rider/mechanic/team manager's sponsors.
- 2nd infraction - \$250 (CAD) – to be paid in full prior to participation in the following National event. All proceeds will be forwarded to the Canadian Motocross of Nations effort.
- 3rd infraction - disqualification from the following national event



2017 ROCKSTAR ENERGY DRINK MOTOCROSS NATIONALS INFORMATION PACKAGE

PERTINENT RULES

1) SIGN-IN

Riders must sign-in at the designated times (please refer to schedule above) in person to sign the waiver for insurance purposes. Riders who have pre-entered must also sign the appropriate waiver during the designated sign-in times. Mechanics and/or team managers will not be permitted to enter their rider. All riders are to be signed in and must take their bike through tech inspection between 1-5pm. No entries or tech on the morning of the National.

CMRC licensed Pro riders that have provided their email address to CMRC may pre-enter online up to midnight (EST) the Wednesday prior to each respective national at the following link*:

<http://www.cmrcracing.com/membership-services/>

Please print a receipt of your pre-entry for proof of purchase and present to the staff during sign-in.

2) TRACKSIDE ACCESS

All mechanics and team managers wishing to have access to the track, starting area or mechanics signalling area must sign the necessary release waiver during sign-in to receive the designated wristband to obtain track access. Credentials will not grant the holder access to the track, starting gate or mechanics signalling area. Only one mechanic per rider will be allowed trackside access. There is no fee associated with a mechanic's wristbands.

Riders who are not participating in the current practice/qualifier/LCQ/moto are not permitted to be on the track, starting gate or mechanics signalling area.

Photographers and Media must also sign the appropriate waiver form and obtain the proper wristband or media vest before entering the track.

Any person found on the track to be without the designated wristband is subject to immediate removal and a \$50 fine.

3) PERSONAL VEHICLES

Utility Vehicles (UTVs): UTVs are permitted for transporting race materials to and from the start line and mechanics signalling area only. Under no circumstances are UTVs to be used for personal transportation.

Golf Carts/Pit Bikes: The use of golf carts and pit bikes are prohibited at all times during the Pro National weekend.

Rental Cars: Rental cars are to be parked in the designated parking areas only.

4) TRANSPONDERS

CMRC will continue to use the AMB electric scoring system as employed throughout the 2016 season. Transponders are mounted behind the number plate on either fork tube, facing upwards. Transponders must be worn by the participating riders at all times while the rider is on the track, practice included. Any rider found to not have their transponder on their bike during the designated times will be black flagged and subject to a \$50 fine.

It is mandatory for teams to purchase transponders (if they have not already done so). Teams are also responsible for the adequate charging of the transponder prior to their riders participating in the National weekend.

Rental Info: Transponders are available for rent at all ten rounds of the Nationals during the designated sign-in periods. All participants intending to rent a transponder must fill out a credit card authorization form (on-site) to leave in exchange for the transponder. Any transponders not returned after the rental period will result in a \$320 + HST **Transponder Fee charged to the credit card on file on the day of the national. This fee is non-refundable.**

Purchase Info: Transponders are also available for purchase prior to the Nationals commencing. AMB is now selling the new X2 Transponder that are available through CMRC if you place an order before April 14, 2016. Email pronationals@cmrcracing.com.

Transponder Rentals

	Fee	Responsible for Charging	Charging Period	Duration of Charge
Rent	\$30/round	CMRC	N/A	48 hours minimum

Please note that riders competing in both MX1 and MX2 classes in one day will only require one transponder for both classes.

A print out of timed lap scores will be available at the CMRC trailer following each qualifier/moto. Print outs will not be available after practice sessions. Event results, series results and a report of individual lap times will be posted on the national series website – www.mxnationals.ca – following each national event. Live timing can be found on your mobile phone at mobile.cmrcracing.com.

5) TECHNICAL INSPECTION PROCEDURES

- 1) Participants will be issued a tech inspection sheet at sign-in for each respective class. The motorcycle brand, model, and race number are to be recorded and taken to the designated tech inspection area.
- 2) Riders/mechanics are to report to the tech inspection area with their recorded information of the machine, plus their jersey/chest protector with matching numbers to that of their motorcycle.
- 3) A CMRC tech sticker will be placed on the front number plate.
- 4) Tech stickers will not be issued if the following requirements are not met:
 - a) Tech sheet is not presented to the tech inspector.
 - b) Failure to produce jersey/chest protector with proper name and numbers.
 - c) Failure to have assigned CMRC numbers with proper number/background colour combination on all three number plates.
 - d) Number plates have non-approved stickers, number plate/sticker combinations or decals.
 - e) For Pro National events, front numbers must be a minimum of 6" high and side numbers a minimum of 4" high.

6) For Pro Nationals, the production year of the motorcycle competing must be within ten years of the current year.

For prior approval of number/background design combinations, email pronationals@cmrcracing.com with a digital rendering.

There will be no technical inspection prior to the commencement of the National race day. If two motorcycles are to be used for practice or racing in one class, both motorcycles are to be approved through tech inspection.

Riders will be permitted to use a second bike to race at each national. If one bike has a mechanical failure in practice, a qualifier or first moto, the rider may use a second bike providing it has gone through tech inspection on the previous day to the National. A rider with two bikes is permitted to use both bikes in practice and qualifying providing their transponder has been transferred from their first bike to their second.

7) Sound Technical Inspection

Sound tests will not be conducted by CMRC Officials. However, sound levels may be tested during practice and qualifying. If a bike reads well over the maximum 96.9 db level it will be tested at the conclusion of the session and must pass the sound test to continue.

8) Practice Procedures

- 1) Participants are to report to the staging area 10 minutes prior to the start of practice.
- 2) All motorcycles used for practice must have the proper CMRC tech sticker affixed to their front number plate. Motorcycles without the proper sticker attached will not be permitted to practice.
- 3) Practice order will be according to the qualifier the rider has been assigned (ie. 1st qualifier, 1st practice).
- 4) Practice starts must be made during the practice period. If a rider practices starts after he has received the checkered flag he will lose his fastest qualifying lap time.

9) Staging for Qualifiers/Motos

- 1) Participants and/or mechanics must report to staging area 10 minutes prior to the start of their qualifier or hot lap/moto.
- 2) The rider and their bike must be in the staging area when their name/number is called to the line. If both the bike and rider are not present they will lose their original gate choice and will be assigned the last gate pick. Exchanging gate positions with other riders is not allowed.
- 3) Transporting dirt from outside the designated starting area is prohibited.

10) Mechanic Signalling Area

- 1) A specified mechanic signalling area will be appointed at each round of the nationals. This area is where all team vehicles are to be parked throughout the racing.
- 2) If a mechanic or team member/manager is found signalling outside of the designated area their privileges will be removed for the remainder of the event.
- 3) Mechanic's Apparel:
 - i) ALL mechanics are to wear a collared team shirt (or, in the case of a privateer a collared golf shirt will suffice) at all times they are on the track, including the start gate and signal area.
 - ii) Cut-offs, sleeveless shirts, bikinis and open-toe shoes are *prohibited* in the signaling area.
 - iii) Any mechanic who does not adhere to the aforementioned rules will be subject to removal from the track area and/or a fine.

11) Flags

- 1) YELLOW - caution. For Pro Nationals only, double jumping will be permitted when a yellow flag is displayed. Competitors must ride with caution until they have passed the incident that caused the flag. While the yellow flag is displayed, passing another rider will result in a 5 position penalty. Contact with emergency personnel will result in immediate disqualification from the event.

6. WHITE WITH RED CROSS - Indicates a downed rider or the need for extreme caution. All riders must display a clear attempt to reduce their speed. Absolutely no passing, or no jumping with the purpose to clear any obstacle.

If both the Red Cross and yellow flag are displayed and if there is a pass or jump, the Red Cross flag supersedes the yellow, and a five position penalty will apply.

Penalty for jumping on the Red Cross flag:

1st infraction – 5 position penalty

2nd infraction – 10 position penalty

3rd infraction – moto disqualification

2) RED FLAG – In the event a race is ended due to a red flag, the rider that caused the red flag will receive last place points. If two riders or more caused the red flag, they will be scored last (ie. second last then last, etc.) according to their positions the lap prior to the red flag. If the red flag is displayed after 50% or more of the race has passed the race will be considered complete. If there is a red flag displayed prior to the halfway mark, the rider that causes the red flag will not be permitted to restart the same moto.

3) BLUE FLAG - Indicates a rider is about to be overtaken by a faster rider. The overtaken rider should hold their line and not impede the progress of the faster rider. Riders disregarding this flag may be black flagged at the discretion of the Referee.

4) For a complete listing of flag rules please refer to the CMRC Pro Rulebook.

12) Timed Qualifying Procedures (MX1/MX2 Only)

All riders, including the top ten riders from both the MX2 Pro/Am and MX1 Pro, past or current standings, will qualify on the morning of the National event.

In the event a current top ten rider in the standings does not qualify for the National, they will have one provisional awarded throughout the entire series to start in the back row.

The current top 20 riders (as of the current standings) will be placed in the first practice/timed qualifier. For the first National's practice and timed qualifier, the top 20 will be determined by the previous year's overall standings in each respective class or according to the Head Referee. The remaining entries will receive their practice/timed qualifier according to the lottery system.

Where the number of entries in either the MX2 Pro/Am or MX1 Pro class is 40 or less, all riders will qualify by the timed qualifying sessions to determine the staging order of the first National moto.

Each class will be divided into two groups for a 15 minute timed qualifier. The top 38 riders with fastest times will be automatically seeded into the main motos and will be staged according to their times. The remaining riders will be allowed an additional 10 minutes in their respective last chance qualifier. The

top two finishing times for each class in the LCQ will be assigned the 39th and 40th starting positions. Regardless of the top two fastest times from the LCQ, those riders will occupy the last two starting positions.

Lap times are calculated at the timing loop located at the finish line from the beginning of one lap to the end of the same lap. Times are calculated at the location of the timing loop, not the checkered flag.

Any rider(s) cutting the course during the Timed Qualifiers in an attempt to improve their lap times will have their shortened lap time and next fastest lap time removed from the Qualifier or LCQ.

No points will be awarded for qualifying finishes.

All riders must begin the qualifying period at the starting line and ride in the direction of the track. Any rider found cutting the course to begin qualifying will have their shortened lap time and next fastest lap time removed from the Qualifier or LCQ.

13) Number Plate Stickers

The following is the required series sticker to be placed on the front number plate for both MX1 and MX2:

(NOTE: As of March 1, 2015 negotiations for a series sponsor for both the MX2 and MX1 classes are taking place but have yet to be finalized. In the event that a series sponsor per class is confirmed, the sponsor's sticker must be placed on the front number plate for each respective class. Upon confirmation, a notice will be sent along with the required graphics. Please refrain from printing front number plate graphics until further notification.)

MX1



MX2



CMRC Pro MX sticker is to be placed on each side number plate for the MX1/MX2 classes within the designated borders.

No stickers/decals permitted within the predefined area, except those of CMRC and series sponsors.

14) Number Plate Specifications -

Number/background specifications:

- a) Front:
 - Allow 1 ¼" from top of number plate to top of number for CMRC/series sponsor decal
 - Minimum number height 6"
 - ¼" background border from edge of number.
 - No names, sponsor names/logos or any graphics of any description permitted within the number plate border.
 - For MX1, the background must be solid white, the numbers solid black. No shading behind numbers permitted.
 - For MX2, the background must be solid black, the numbers solid white. No shading behind numbers permitted.
- b) Side plates:
 - Allow 3" from back of side plate to number for CMRC Pro MX decal. The entire CMRC Pro MX decal must be placed within the designated number plate background.
 - Minimum number height 4"
 - ¼" background border from edge of number
 - No names, sponsor names/logos or any graphics of any description permitted within the number plate border.
 - For MX1, the background must be solid white, the numbers solid black. No shading behind numbers permitted.

- For MX2, the background must be solid black, the numbers solid white. No shading behind numbers permitted.

Following are the required number/background colour combinations:

- MX2 Pro/Am - White numbers/Black background
MX1 Pro - Black numbers/White background

15) Competition Apparel

All MX1/MX2 riders participating in a National event must have their last name on the back of their riding uniform at the shoulder line. If a chest/back protector is worn, the rider's name and assigned number must be visible either on the jersey or on the chest/back protector. No abbreviations or nick names will be accepted. All letters and numbers must be no less than 1 ½" high, and must be contrasting to the colour of the background. The rider's number on the back of their jersey/chest protector must coincide with their numbers displayed on their number plates. For Pro Nationals, this requirement applies to all practices, qualifiers and races. A rider will not be permitted on the track if their name and numbers are not displayed on their back. If a rider is found on the track during practice or qualifying they will have their fastest lap time taken away. The CMRC Pro MX logo must be displayed on the left or right chest of the jersey.

16) Appeals and Protests

All protests, appeals and/or penalty funds for national events are to remain with the CMRC National Office.

17) Pit Parking

All teams with trailers 36'-53' must be present at the track according to the time schedule listed on Page 2 in order to receive their predetermined pit parking area. Those reporting after this time will be placed in the best possible area that the pit area can accommodate. No other vehicles will be allowed on-site before this time. Trailers parking prior to this time will be subjected to a \$150.00 fine.

18) Credentials

Series credentials will only be available to participants and their mechanics once a 2016 CMRC racing license has been issued. The license number is to be included in each application.

Credentials will be issued to riders, mechanics, managers and team transport vehicle drivers. No family, friends or significant others are eligible.



2017 ROCKSTAR ENERGY DRINK MOTOCROSS NATIONALS INFORMATION PACKAGE

Credentials will not grant the wearer access to the starting line, mechanics signal area or trackside. Credentials are for gate entry into the event only and are not available for amateur riders.

Email head and shoulder photos to: amanda@cmrcracing.com. Mail or courier photos and application to 19 Hill Top Trail, Stouffville, ON L4A 3G7 Attn: Amanda Stallybrass. All cheques are to be made payable to SPI.

NOTE: No credential applications will be accepted without payment, including teams. Credentials will not be issued on-site. Deadlines must be met in order to acquire series credentials. Sorry, no exceptions. If riders, mechanics and/or team managers do not submit their application before the deadline they will have to pay FULL gate admission at all rounds.

REFUNDS: No refunds for credentials once applied, or pre-paid gate entry after May 26, 2017. All credentials will be available for pick up at the front gate of each respective National.

* All racers must have a valid CMRC license to apply for a credential. Call (905) 642-5607 ext. 5 to inquire about purchasing a license and acquiring a racing number.

MX1 Pro/MX2 Pro-Am Credentials:

All credentials will be issued to Pros, Mechanics, and Team Members only. Each application is subject to approval.

Media:

Media applicants must provide proof of their affiliation with a recognized media outlet and are subject to approval.

CREDENTIAL FEES:

Pro Rider:	\$50.00 + \$6.50 HST = \$56.50
Mechanic:	\$350.00 + \$39.95 HST = \$395.50 (discounted gate fee of \$35/round, plus 13 % HST, no refunds)
Team Member:	\$350.00 + \$39.95 HST = \$395.50 (discounted gate fee of \$35/round, plus 13 % HST, no refunds)

TEAMS: Must provide credit card for payment in full in advance. A receipt will be provided upon request.

NO CREDENTIALS, NO FREE ADMISSION, NO EXCUSES ACCEPTED. NO REPLACEMENTS WILL BE ISSUED FOR LOST OR STOLEN CREDENTIALS.



**2017 ROCKSTAR ENERGY DRINK
MOTOCROSS NATIONALS
INFORMATION
PACKAGE**

CREDENTIAL APPLICATION FORM

DEADLINE: April 14th, 2017. No extensions!

Please indicate below if you are one of the following:

☐ Pro Rider ☐ Mechanic ☐ Team Manager ☐ Media

CMRC License Number (eight digit - racers only – **mandatory***): _____

Name: _____

Team Name: (if applicable) _____ Bike Number: _____

Address of credential delivery (If applicable):

Street _____

City _____ Province/State _____ Postal/Zip Code _____

Email _____

Series: ☐ MX1 ☐ MX2

Amount Enclosed: \$ _____

Method of Payment: ☐ Credit Card* ☐ Money Order

** If paying by credit card, please include the Credit Card Authorization Form along with this application.
VISA, MasterCard and AMEX only. NO CHEQUES ACCEPTED.*

2nd ANNUAL CMRC PRO AWARDS BANQUET

The CMRC Pro Awards Banquet will take place at 8:00pm on Sunday, August 13, 2017 at the Holiday Inn (20 Fairview Rd.) in Barrie, Ontario following the final round of the 2017 Rockstar Energy Drink Motocross Nationals. All credential holders are welcome at no additional charge.



**2017 ROCKSTAR ENERGY DRINK
MOTOCROSS NATIONALS
INFORMATION
PACKAGE**

CREDIT CARD AUTHORIZATION FORM

*Please fill out all the information below, sign and email to Amanda Stallybrass at the CMRC office:
amanda@cmrcracing.com.*

Card Holder Information

Card Type (check one):

_____ Visa _____ MasterCard _____ American Express

Name (as appears on card): _____

Card Number: _____

Card Expiry Date: ____ ____ / ____ ____

Billing Address: _____

Daytime Phone Number: () _____ - _____

Signature: _____

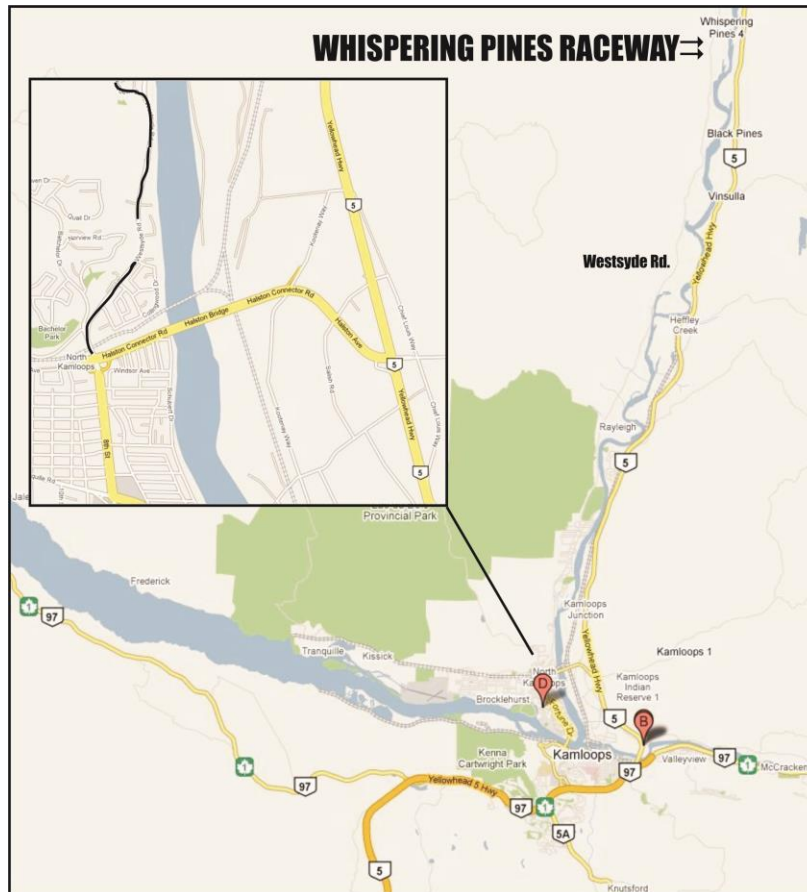
Authorization:

I, the designated cardholder of the above listed credit card, authorize the Canadian Motosport Racing Corporation (CMRC) to charge the amount indicated to the credit card listed above for CMRC License, Nationals Credential, Entry Fee or any other transactions as indicated below.

Total Amount to Charge: \$ _____ or Automatic Payments of all invoices Yes _____ No _____

Date of processing (office use only): _____

Round 1 – Whispering Pines Raceway, Kamloops BC



Driving Directions:

From Vancouver take exit 374 (HYW 5N) and turn left at 3rd set of lights (Halston Ave). Drive over Halston Bridge and turn right on Westsyde Rd. Stay on Westsyde Rd. approx 25 km until you see the track.

Accommodations and Restaurants: <http://tourismkamloops.com>

Host Hotel:

SANDMAN SIGNATURE KAMLOOPS
225 Lorne St. | Kamloops BC | V2C 1W2



2017 ROCKSTAR ENERGY DRINK MOTOCROSS NATIONALS INFORMATION PACKAGE

Host Hotel

Group name: cmrcracing – Rockstar Pro Nationals

Group Confirmation number: 92558

Dates: June 2nd – 5th, 2016

Rates: \$119 and up

Guests are to contact either the **Hotel directly at 250.377.7263** or central reservations at **1-800-SANDMAN** and quote the above group name or number to reserve their rooms.

<http://www.sandmansignature.ca/hotels/kamloops/>

Camping: Available onsite.

Rental Cars: AVIS Car & Truck Rental - (airport): 250-554-3888 Budget Car & Truck Rental: 250-374-5888, Discount Car & Truck Rentals: 250-372-7170 Enterprise Rent-A-Car: 250-374-8288 HERTZ Rent A Car - (airport): 250-376-3022 National Car & Truck Rental - (airport): 250-376-5911 & (downtown): 250-374-5737

Nearest Airport: Kamloops International Airport

Local MX Dealers:

Kamloops Yamaha 1455 Iron Mask Rd 250-828-2750

RTR Performance (Honda) 2051 E Trans Canada Hyw 250-374-3141

Rivercity Cycle (Suzuki) 1794 Kelly Douglas Rd 250-377-4320

Leading Edge Motorsports (Kawasaki) 701 Tagish St 250-372-8534

Contact:

Stu McQueen – 250-300-9857 / smcq@telus.net

Round 2 – Blackwater MX Park, Prince George, BC



Driving Directions:

From Prince George International Airport (10, 4141 Airport Rd, Prince George, BC V2N 4M6):

Take Ellis Rd to BC-97 N in Fraser-Fort George D (5.2 km). Take BC-16 W to Blackwater Rd in Fraser-Fort George C (37.1 km), then south (21.4km) to track - 28100 Blackwater Rd, Prince George, BC V2N 6H6

From Dawson Creek:

Take BC-97 W to BC-16 W in Prince George, turn left onto Blackwater Rd, south to track.

From Hixon, BC:

BC-97 N. Drive to Prince George to BC-16 W, turn left onto Blackwater Rd, south to track. (68.0 km)

Accommodations:

Host Hotel



2017 ROCKSTAR ENERGY DRINK MOTOCROSS NATIONALS INFORMATION PACKAGE

Sandman Hotel & Suites

1650 Central Street

Prince George, BC

250-563-8131

Mention CMRC Racing to get the discounted room rate from \$121 per night. (conf. #378354)

Local Motorcycle Dealers:

Cycle North Powersports

Honda/ Kawasaki/ Husqvarna

5905 Gauthier Rd, Prince George, BC V2N 5M4

(250) 964-9091

www.cyclenorth.com

Prince George Motorsports

Yamaha

2005 Redwood St, Prince George, BC V2L 2N5

(250) 562-4151

www.pgmotorsports.ca

Forest Power Sports

KTM

988 Great St #120, Prince George, BC BC V2N 5R7

(250) 563-1021

www.forestpowersports.com

NR Motors

Suzuki

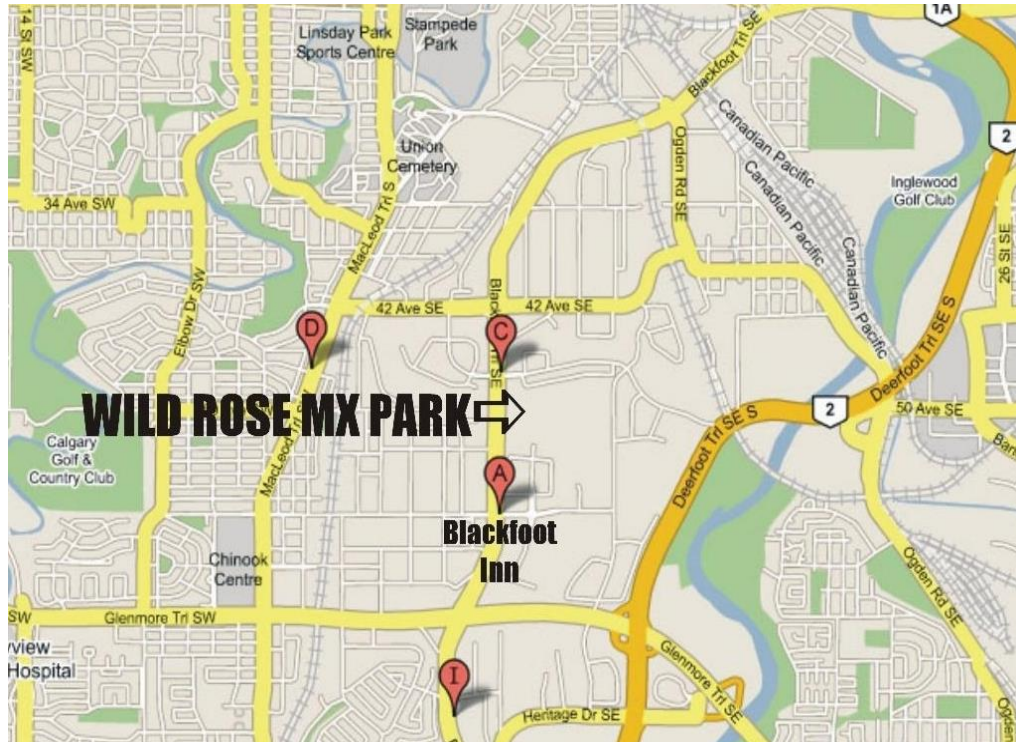
805 1 Ave, Prince George, BC V2L 2Y4

(250) 563-8891

www.nrmotors.ca

Kourtney Lloyd - 250-961-0410

ROUND 3 – Wild Rose MX Park, Calgary AB



Driving Directions:

From Intl Airport & Tans Canada Hwy

- Take Deerfoot Trail (Hwy 2) south.
- Exit Glenmore Trail West
- Exit Blackfoot Trail North
- Turn east on 58th Ave.
- Turn north on Burbank Rd.

Website: www.wildrosemx.com

Ticket Information:

Track phone number: (403) 240-4025 or (403) 258-1883

Sales phone number: 905 642 5607



2017 ROCKSTAR ENERGY DRINK MOTOCROSS NATIONALS INFORMATION PACKAGE

Accommodations:

Host Hotel:

Hotel Blackfoot

5940 Blackfoot Trail SE, Calgary, AB T2H 2B5

1-800-661-1151

(403) 252-2253

2 blocks from track, special rates for riders and teams. Mention CMRC Racing - \$119 per night – limited quantity). Booking deadline – May 19, 2017

Camping is available at the track.

Nearest Airport:

Calgary International YYC 1-877-254-7427

Local MX Dealers:

Blackfoot Motorsports 1-800-665-6735

Bow Cycle (403) 250-8630

Walt Healey (403) 250-8630

Pro-Am (403) 277-0099

Rock Central Cycle (403) 569-1341

Rental Cars:

Discount: 1-800-263-2355

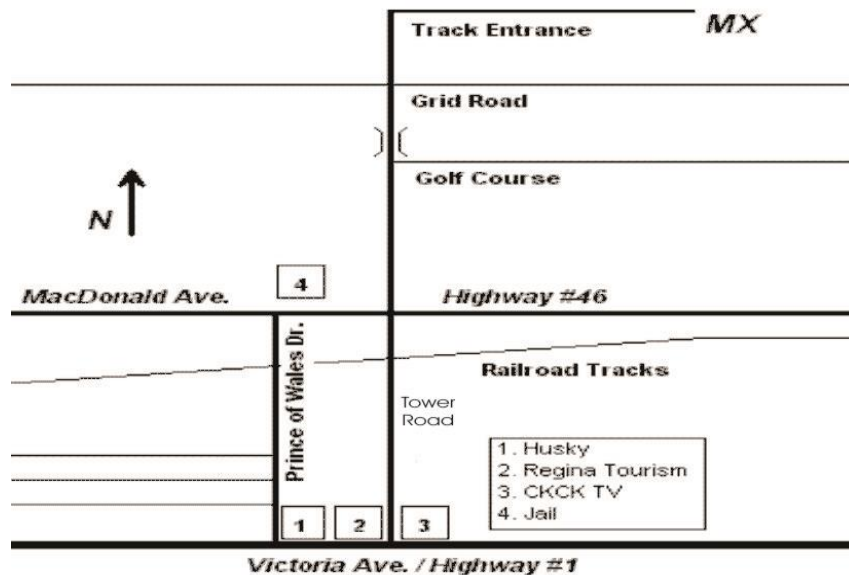
Enterprise 1-800-325-8007

Thrifty 1-800-667-5925

Dollar 1-800-800-4000

1-800-654-2280

ROUND 4 – Moto Valley Raceway, Regina, Saskatchewan



- Prince of Wales Drive is on the VERY EAST SIDE of Regina.
- 1.7km from Prince of Wales Dr. to Grid Road.
- Track is 8km North of Highway #1 along Grid Road.

Directions:

From International Airport: Take Lewvan Dr. south to the Trans Canada Hwy #1. Travel east then north to Victoria Ave. (continuation of TC Hwy #1). Go east to Tower Road. Follow Tower Road north to track entrance.

Local MX Dealer

Alsport Sales Ltd (Honda/Suzuki)
1900 1st Ave, Regina, SK S4R 8G6, Canada
(306) 525-0189 · alsportsales.com

Reed Leisure Products (Yamaha)
Hwy #1 East, North Service Rd.
White City, SK
(306) 789-8007

Schrader Honda Yamaha Suzuki
Highway #9 North
Yorkton, SK S3N 3X3
1 (888) 903-1385



2017 ROCKSTAR ENERGY DRINK MOTOCROSS NATIONALS INFORMATION PACKAGE

Accommodations:

Host Hotel : Sandman Regina

1800 Victoria St.

Regina, SK

306-757-2444

Mention "CMRC team" for discounted rate of \$99/night Friday and Saturday.

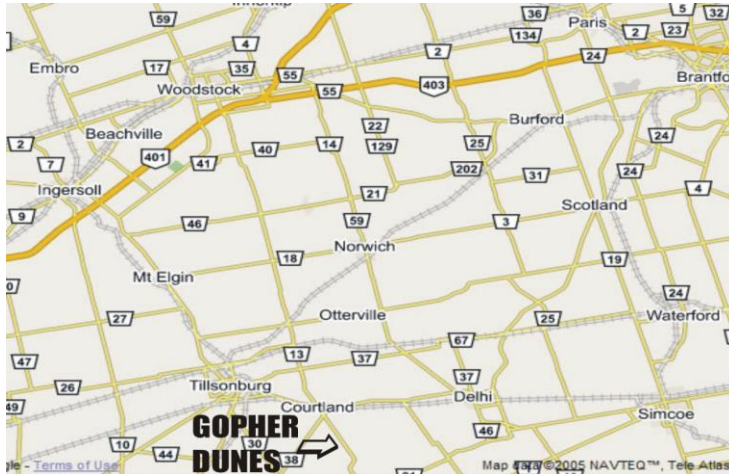
Booking deadline: June 9th.

Contact

Dean Murphy – (306) 530-5887

drmurphy@sasktel.net

ROUND 5 – Gopher Dunes, Courtland, ON



Directions

- From Hwy 401 Exit Hwy 59 Woodstock/Delhi and turn south onto 59.
- Travel for about 10 min. until you come to a small hamlet called Holbrook. You will see an Al's Tire on your right and a sign for Oxford Road 13. You must veer off to your right onto 13 (do not follow 59 which makes a sharp curve to the left).
- Follow Oxford Road 13 for close to 10 minutes until you reach a small village called Springford and you come to a dead end stop.
- To continue traveling south, you must make a quick jaunt to the left and a quick right. After another 5 minutes you will come to stoplights. This is where Oxford Road 13 ends, and you cross over Hwy. 3 and will be back on Hwy 59 South.
- From the stoplights you travel 5 km. further and Gopher Dunes will be on your right hand side.

Accommodations:

Quality Hotel & Suites - 1-800-667-4466 or local (519) 537-5586
580 Bruin Boulevard, Woodstock, Ontario
Northwest corner of Hwy 401 and Hwy 59 (exit 232).

SUPER 8 MOTEL located at 98 Simcoe Street in Tillsonburg, a 10 minute drive to Gopher Dunes. For reservations call toll free 1-800-800-8000 or direct (519) 842-7366. Another Super 8 Motel is located just off the 401 exit in Woodstock on Hwy 59 North, only a 30 minute drive north of Gopher Dunes. For reservations call 1-888-882-8835 or (519) 421-4588

Contact: 905-640-6686 / 519-842-2781

Round 6 – Motocross Ulverton, Quebec



Directions: From Montreal take Hwy 20 East, from Quebec City take Hwy 20 West, towards Drummondville. Take exit 173 (Autoroute 55) and travel south towards Sherbrooke, then take exit 103 (Route McGivney) and head east to Route 143. Turn right (south) on 143 and follow to Chemin Bogie then turn left to track.

Accommodations

Quality Suites

2125 rue Canadien Drummondville Qc. J2C 7V8

1-866-572-2700 (25 minutes to the track)

Motel Blanchette

225 boul. St-Joseph West, Drummondville Qc. J2E-1A9

(819) 477-0222 (25 minutes to the track)



2017 ROCKSTAR ENERGY DRINK MOTOCROSS NATIONALS INFORMATION PACKAGE

Motorcycle Dealers

SPORT 100 LIMITES (HONDA /YAMAHA)

650 Domino St-Charles de Drummond Qc. (30 minutes to the track)

(819) 445-6686

HONDA LALIBERTE MOTO SPORT

1162 route 116 Acton-Vale, QC (40 minutes to the track)

(450) 549-5454

PULSION SUZUKI

150 D CHEMIN YAMASKA (20 MINUTES TO THE TRACK)

ST-GERMAIN DE GRANTHAM, QC. JOC-1K0

(819) 395-4040

Airport:

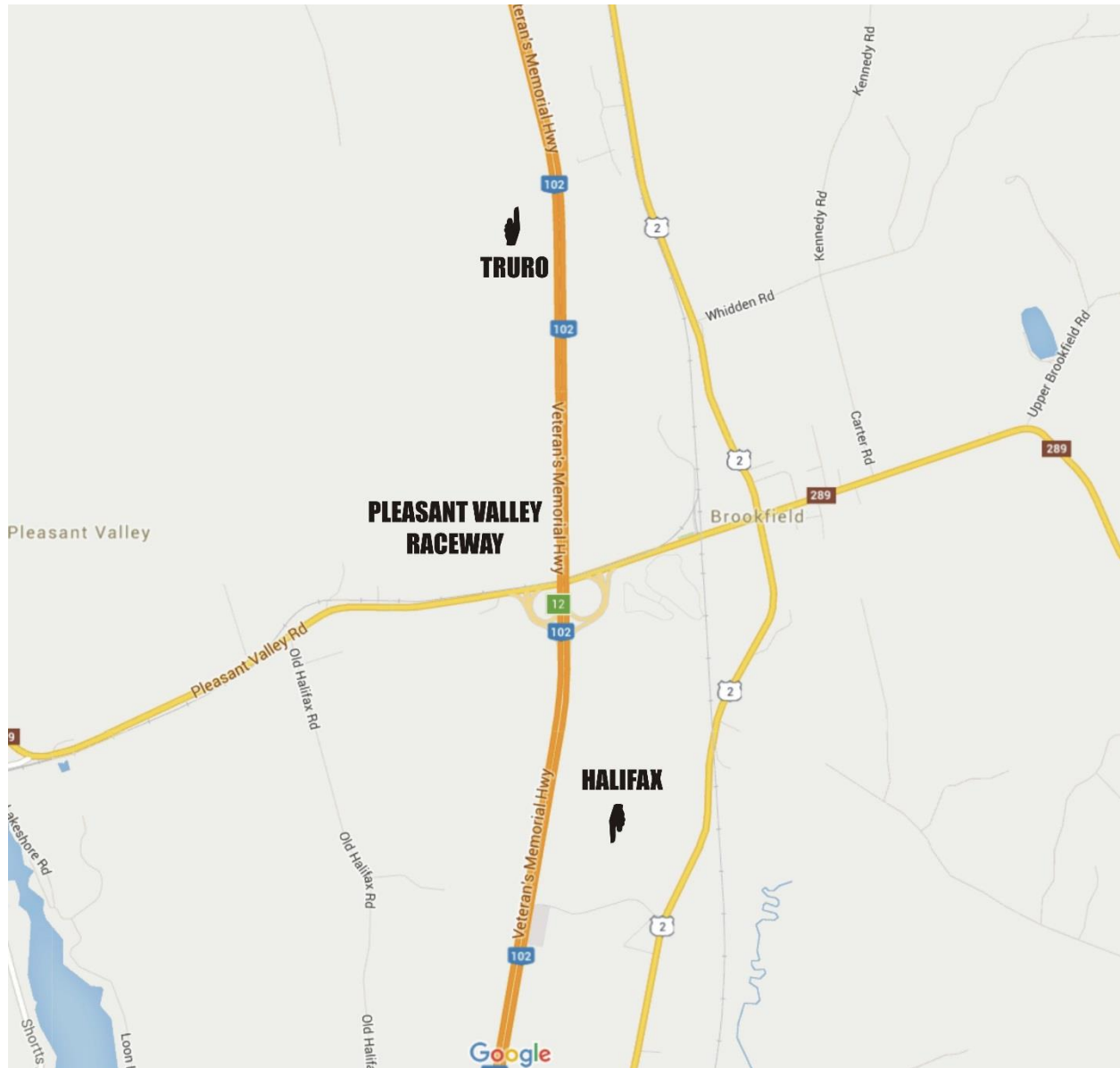
Dorval, Montreal or if you have a private JET we have a small airport in Drummondville.

Website:

www.mxulverton.com and the directions are on the website.

Ticket information: Saturday \$15, Sunday \$25

ROUND 7 – PLEASANT VALLEY RACEWAY, TRURO, NOVA SCOTIA



Directions:

Take Highway 102 to exit 12 Brookfield, Highway 289. Go west 1 Km to track entrance.

Contact

Mitch Cooke - 902-957-9376

cookehaf@gmail.com



2017 ROCKSTAR ENERGY DRINK MOTOCROSS NATIONALS INFORMATION PACKAGE

Host Hotel

Hampton Inn & Suites by Hilton Truro
Hotel Switchboard: (902) 843-4343
35 Legends Avenue, Millbrook, Nova Scotia

Mention "CMRC Racing" to receive the discounted rate of \$129.99/night.

Motorcycle Dealers

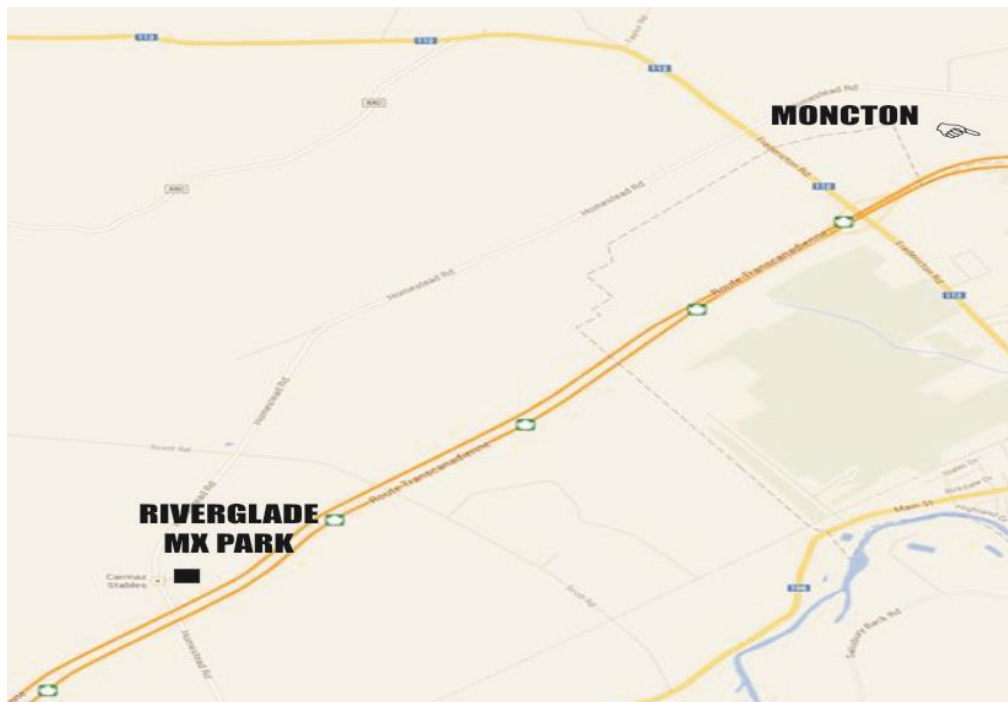
Freedom Cycle – Truro (Kawasaki/KTM/Husqvarna)
20 Lower Truro Road
Truro, NS B2N 5A9
(902) 895-8209
Freedom Cycle, Inc.
122 Chain Lake Drive
Halifax, NS B3S 1A2
(902) 450-0020

The Cat Shack (Yamaha / Suzuki)
70 Juniper St, Truro, NS B2N 5Z8
(902) 843-4800

Pro Cycle (Honda / Yamaha / Suzuki)
236 Brownlow Avenue
Dartmouth, Nova Scotia
(902) 468-2518

Shore Cycle (Yamaha / Suzuki)
6992 Nova Scotia Trunk 3
Mahone Bay, NS B0J 2E0
(902) 627-2706

ROUND 8 – RIVER GLADE MX PARK, MONCTON, NEW BRUNSWICK



Directions:

- Take the Silver Fox Irving Big Stop exit on the Trans Canada Highway just outside of Moncton, near Salisbury.
- Head towards Highway 112 (Coles Island Road), and turn left at the intersection and follow the road for several miles.
- Riverglade MX Park (and the Riverglade stock car track) is located on the left.

Driving instructions from Moncton Airport:

- Take Highway #15 to Rte. #2 (TCH) go west until exit #433 at Salisbury Big Stop.
- Go right on 112 one km to Homestead road turn left and go 5.5 km to track on left.

Driving instructions from Quebec:

- Take Rte.#2 east to Exit 423 to St. John/Petitcodiac turn left on Homestead Road and go 5 km to track or continue on Rte. #2 to exit 433 at Salisbury Big Stop and go north on 112 as in west bound directions.



2017 ROCKSTAR ENERGY DRINK MOTOCROSS NATIONALS INFORMATION PACKAGE

Driving instructions from St. John NB:

- If coming from St. John NB, take Rte. #1 to Riverglade Exit and then east on Homestead Road 5 km to track. (Stevie Wonder could find RGMX).

Accommodations:

Hampton Inn & Suites 700 Mapleton Road, Moncton, NB 506-855-4819

Holiday Inn Express-2515 Mountain Rd. Moncton N.B. 1-800-595-4656

Comfort Inn - 2495 Mountain Rd. Moncton, N.B. - 1-800-228-5150 - monctongm@whgca.com

Amsterdam Inn - 2550 Mountain Rd. Moncton, N.B. - 1-800-468-2828-innm@nbnet.nb.ca

Country Inn & Suites - 2475 Mountain Rd. Moncton, N.B. - 506-852-7000-www.countryinns.com

Atlantic Motel & Restaurant - 8 Brown Road - Berry Mills N.B. - 1-877-958-1988

Restwell Motel - 12 MacFarlane Rd. Moncton, N.B. - 506-857-4884-www.restwellmotel.com

All motels can be reached by taking exit 488 off Rte. #2 at Magnetic Hill Moncton.

Camping:

On site.

Contact:

Earl Doucette - H (506)372-4409

Larry Northrup – (506)858-8088

Local MX Dealers:

1) Honda/KTM - Toys For Big Boys-633 Salisbury Road, Moncton N.B. – (506) 858-8088

2) Yamaha - Atlantic Yamaha - 616 Champlain Street, Dieppe N.B. – (506) 383-1022

3) Kawasaki - G. Bourques- 1200 Champlain Street, Dieppe N.B. - (506) 383-4585

4) Suzuki - Hi-Tech Power Sports- 245 Baig Blvd. Moncton N.B. - (506) 857-8815

ROUND 9 – MOTOCROSS DESCHAMBAULT, DESCHAMBAULT, QC



DIRECTIONS:

From Highway 40, west of Quebec City, take #254 exit and go north to St. Marc. Turn right on 3ème rang and follow for 2Km. The track is on the left (north).

ACCOMODATIONS

- Le Chavigny à Deschambault, (877) 286-4959
- Le Must à St Marc Des Carrières, (418) 268-6000
- Le Vieux Bardeau à Deschambault, (418) 286-3812
- Le Portneuvois à Portneuf, (418) 286-6400

RESTAURANTS

- Bravo Pizzeria à St Marc Des Carrières, (livraison à la piste) (418)268-6555



2017 ROCKSTAR ENERGY DRINK MOTOCROSS NATIONALS INFORMATION PACKAGE

- Normandin à la sortie 254 à Deschambault, (418)286-6733
- Le Chavigny à la sortie 254 à Deschambault, (877)286-6733
- Subway à la sortie 254 à Deschambault.

LOCAL MOTORCYCLE DEALERS

- Équipements Les Chutes Kawasaki, (819) 537-5136
- Sports plus St Casimir Kawasaki-Yamaha, (418) 339-3069
- Dion Moto St Raymond Honda-Suzuki, (418) 337-2776
- Enduro Québec KTM à Québec, (418) 661-5683
- Performance Voyer St Raymond Yamaha, (418) 337-8744
- Équipement Jocelyn Frenette Kawasaki St Basile, (418) 329-2870
- Accessoire de moto ADM SPORT à Québec, (800) 463-4340

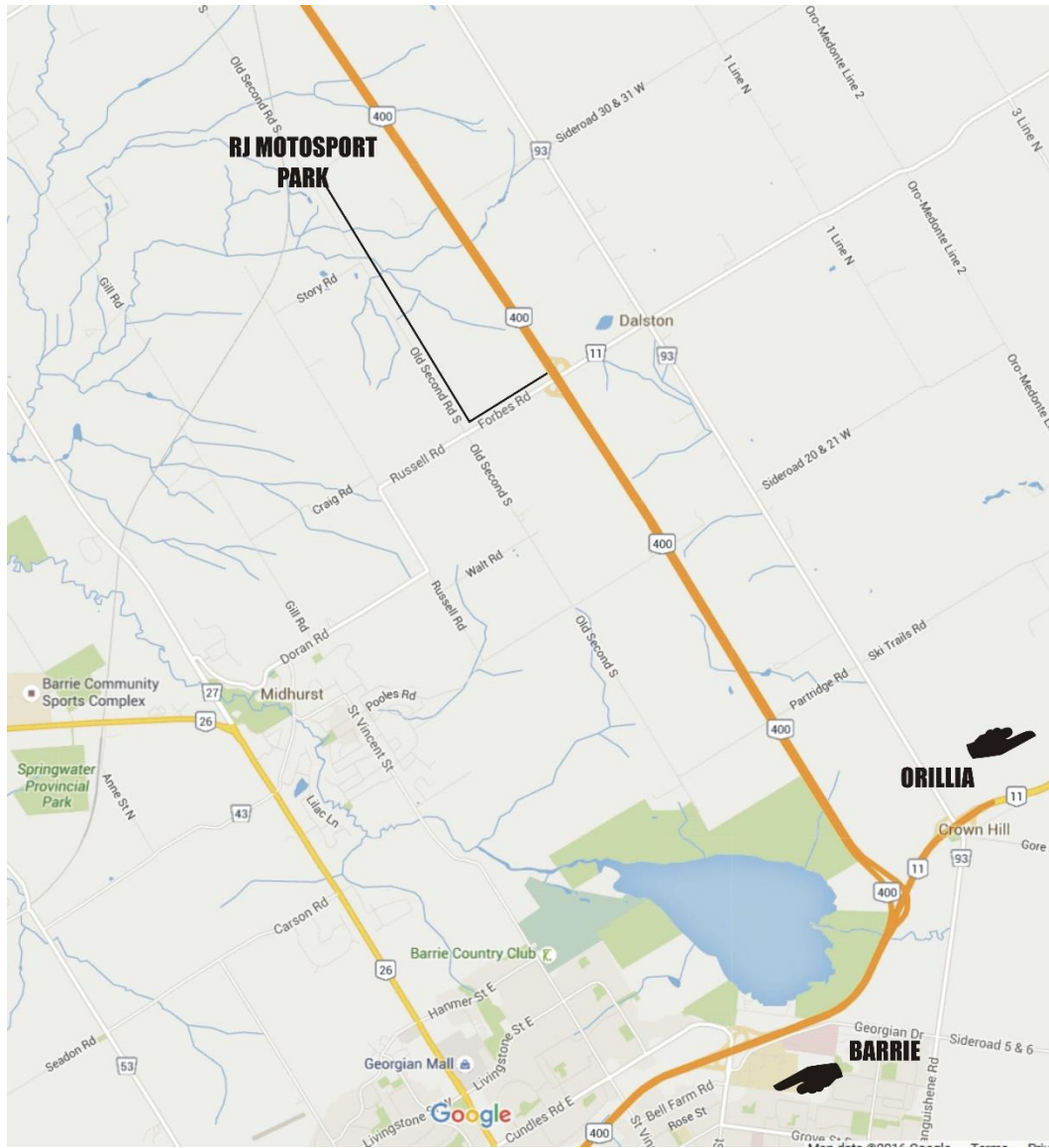
Contact (non-english speaking)

Daniel Thibault
368 3^{ème} Rang
Deschambault, QC
Phone : (418) 268-3173
Cell : (418) 284-4378

www.motocrossdeschambault.com

Hubert Rousseau (French and English speaking)
hubert@challengequebecmotocross.com
(418) 952-0533

ROUND 10 – RJ MOTOSPORT PARK, BARRIE, ON



Directions (from Toronto)

Take Highway 400 north to Barrie. At the Hwy 400/Hwy 11 split, stay on the 400. Take the first exit, Forbes Rd., west to Old Second Rd. South. Go north to track entrance.



2017 ROCKSTAR ENERGY DRINK MOTOCROSS NATIONALS INFORMATION PACKAGE

HOST HOTEL: Holiday Inn Barrie (Site of series banquet)

20 Fairview Rd., Barrie, ON L4N 4P3

1. BY PHONE:

- Call hotel directly and speak to a Guest Services Representative: 705.722.0555 ext.0 - Toll Free: 1.877.728.6191
- Provide the **Group Code RMN**
- Choose room type and guarantee your booking with a credit card

2. ONLINE:

- Book on our website at www.hibarrie.ca and enter your **group code RMN**
- Select arrival date and departure date
- Choose room type and proceed

****Rate available up to group cut-off date of July 30th, 2017****

Motorcycle Dealers

Barrie Honda Powerhouse
74 Mapleview Dr W, Barrie, ON L4N 9H6
powerhouse.barrie honda.com
(705) 797-2006

St. Onge Recreation
65 Hart Drive, Barrie, ON L4N 5M3
stongerecreation.com
+1 888-576-3841

Contact:
RJ Motosport Park (705) 722-3800

CMRC (905) 640-6686 – pronationals@cmrcracing.com