

# Active Transportation Rail to River Corridor

Community Advisory Committee - Segment A, 2<sup>nd</sup> Meeting

Information as of December 13, 2016



Metro

December 13, 2016

# Tonight's Agenda

Information as of December 13, 2016

*Purpose: Update you on Segment A & get your feedback on design concepts & options*

- Welcome & Introductions
- What We've Heard
- Design Concepts & Funding
- CAC Input (Rotating Stations)
- Next Steps



# Active Transportation Rail to River Corridor Map

Information as of December 13, 2016



# Segment B – Work to Date

Information as of December 13, 2016

- 2 TAC, 2 CAC and 4 Community Meetings held
- Technical Meetings with Stakeholders (cities of Bell, Maywood, Huntington Park, Metro Staff, LA County, LA City)
- Established Alternatives Evaluation Methodology
- Conducted Alternatives Analysis Evaluation
- Developed Rough Order of Magnitude Capital Costs
- **Randolph Street Alternative ranks highest**





# Segment A - Work to Date

Information as of December 13, 2016

- Analyzed corridor comprehensively
- Held CAC Meeting #1, pop-up events & public survey
- Environmental Analysis
- RR Track/Tie Analysis - Recommendation to remove
- West & East Ends studied
- Conceptually designed 2 typ. miles, landscape alternatives, special places, major intersections
- Bioswale concept developed
- Railroad easement
- Costs estimated



# What We've Heard - Community Advisory Committee

Information as of December 13, 2016

## **Major Themes** From September 15<sup>th</sup> Segment A Meeting:

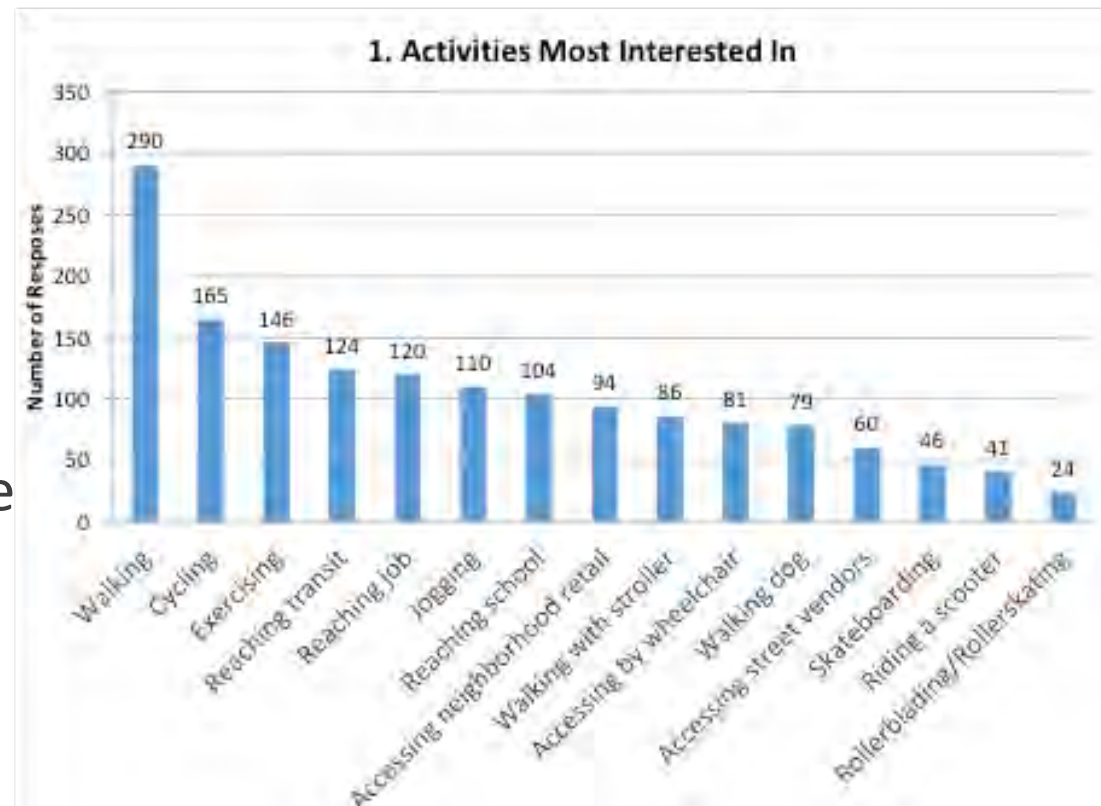
- Beautiful and safe
- Multi-use desired (walking, exercise & recreation are as important as cycling)
- Family-friendly, clean & well-maintained
- Drought-tolerant landscape with shade & trees
- Security and ped/bike safety important
- Discourage encampments through corridor design
- Lighting, seating & other ideas for amenities
- Foster social/community benefits
- Suggested renaming project



# What We've Heard - Community Survey

Information as of December 13, 2016

- Conducted Sept - Oct 2016
- Distributed at community events
  - Sabor de Mexico*
  - Taste of Soul*
  - TRUST South LA Block Party*
- CAC members distributed
- 380 surveys collected
- Frequency of use
- Main concerns
- Design vision for ATC
- Summary results available



# What We've Heard – Technical Advisors

Information as of December 13, 2016

- TAC Meeting
- Interviews with Metro Departments  
Security, Engineering/Construction, Facilities Maintenance, Access/ADA, Real Estate, Joint Development, Environmental, Signage, Metro Art, Other Metro Projects
- Meetings with City of LA  
Transportation, Engineering, Water & Power, Sanitation





# Segment A – Active Transportation Facility Example

Information as of December 13, 2016



# Slauson Corridor Studies



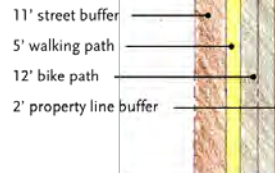
## Mid-block Concepts (Typical 30' ROW)



### Tiger/ATP Grant Elements

- Asphalt paved walkway and 2-way bike path
- Street buffer of decomposed granite (DG)
- Small edge buffer (DG)
- Lighting
- Fencing where needed

COMPOSITION  
30' typical ROW

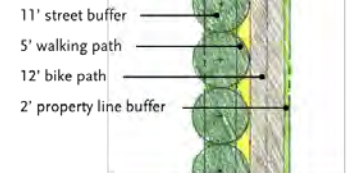


### Tiger/ATP Grant Elements, Trees & Minimal Landscape

Same features as Tiger/ATP plus:

- Bioswale with minimal landscape
- Shade trees

COMPOSITION  
30' typical ROW



LOS ANGELES COUNTY METROPOLITAN TRANSPORTATION AUTHORITY  
ACTIVE TRANSPORTATION RAIL TO RIVER CORRIDOR – SEGMENT A

CITYWORKS DESIGN TEAM  
15% DESIGN CONCEPTS 12.13.16 | TYP – 2



# Slauson Corridor Design Concept



## Mid-block Concept (Typical 30' ROW)

- Asphalt paved walkway and 2-way bike path
- Lighting (spaced every 60')
- Fencing at ROW edge where needed (Metro standard panelized)
- Furnishings & signage
- Bioswales for stormwater run-off treatment with low fencing at edge
- Shade trees
- Diversity of trees/plant species
- Boulders and low, drought tolerant landscape in street buffer



Existing photo of Slauson west of San Pedro (Note: Metro ROW ends 10' from building face in ballast area)



COMPOSITION  
30' typical ROW

- 11' street buffer
- 5' walking path
- 12' bike path
- 2' property line buffer



Examples of bioswale on pedestrian path (Woodman Ave) and between bikeway & thoroughfare (Queens Plaza Bikeway, NY)



LOS ANGELES COUNTY METROPOLITAN TRANSPORTATION AUTHORITY  
ACTIVE TRANSPORTATION RAIL TO RIVER CORRIDOR – SEGMENT A

CITYWORKS DESIGN TEAM

15% DESIGN CONCEPTS 12.13.16 | TYP – 1



# Hyde Park / Chesterfield Square Segment



## Mid-block Concept (Typical 30' ROW)

This design concept focuses on safety/security concerns between Slauson and 11th Avenues where private properties abut Metro's ROW. Given the narrow ROW, the walk and bike paths are separated with a stormwater treatment median (bioswale). The layout addresses visibility concerns by limiting trees, and discourages encampments by minimizing landscaped areas. The separated walk and bike paths would meet at regular intervals. Features include:

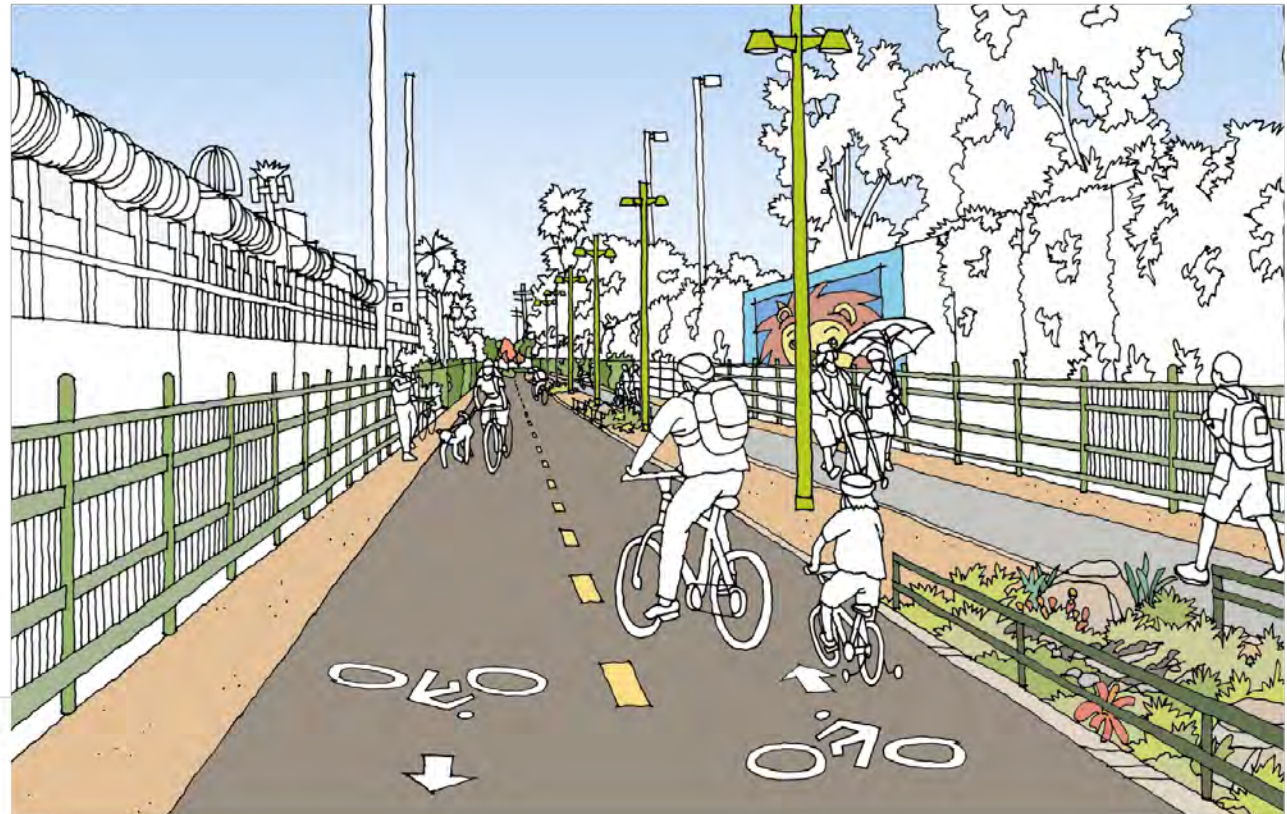
- Asphalt paved walkway and bike path
- Lighting (spaced every 75') with ability to integrate cameras and emergency telephones on pole
- Fencing at ROW edge where needed (Metro standard panelized)
- Trees at access points
- Low, drought tolerant plants and decomposed granite
- Drain to center buffer with bioswale
- Vines where appropriate (not in front of murals)



Before photo of Metro ROW at Hyde Park / Chesterfield Square segment

### COMPOSITION

- 30' typical ROW
- 3' edge zone
- 12' bike path
- 6' bioswale
- 6' walking path
- 3' edge zone



LOS ANGELES COUNTY METROPOLITAN TRANSPORTATION AUTHORITY  
ACTIVE TRANSPORTATION RAIL TO RIVER CORRIDOR – SEGMENT A

CITYWORKS DESIGN TEAM

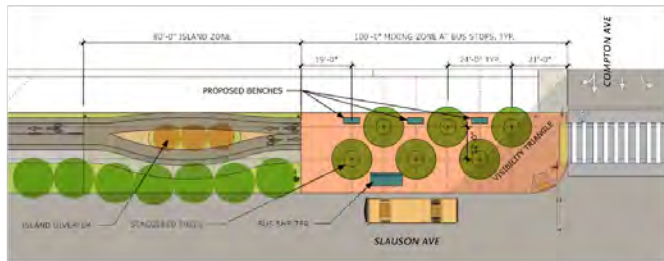
15% DESIGN CONCEPTS 12.13.16 | TYP – 3



# Mixing Zones

Information as of December 13, 2016

## Slauson Corridor Concept at Bus Stop



Concept plan at bus stop mixing zones



Existing photo of Slauson/Compton intersection



Example of diverter planted with drought tolerant flax



Example of street bond graphic (Auckland, NZ)



LOS ANGELES COUNTY METROPOLITAN TRANSPORTATION AUTHORITY  
ACTIVE TRANSPORTATION RAIL TO RIVER CORRIDOR – SEGMENT A

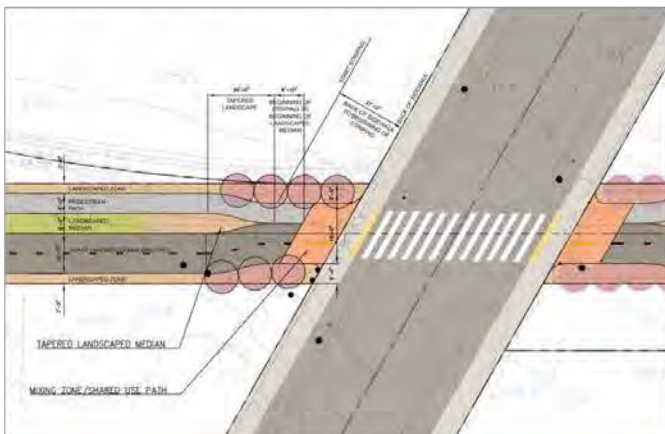
CITYWORKS DESIGN TEAM  
15% DESIGN CONCEPTS 12.13.16 | MIX – 1



# Mixing Zones

Information as of December 13, 2016

Hyde Park / Chesterfield Square Concept at Neighborhood Street (Shown on 30' ROW)



Existing photo of Metro ROW at Van Ness intersection



A concentration of bright trees such as the Chilopsis linearis 'Lopur' can help indicate access points



Example of diverter island that alert cyclists to upcoming intersection (Whittier Greenway Trail)



LOS ANGELES COUNTY METROPOLITAN TRANSPORTATION AUTHORITY  
ACTIVE TRANSPORTATION RAIL TO RIVER CORRIDOR – SEGMENT A

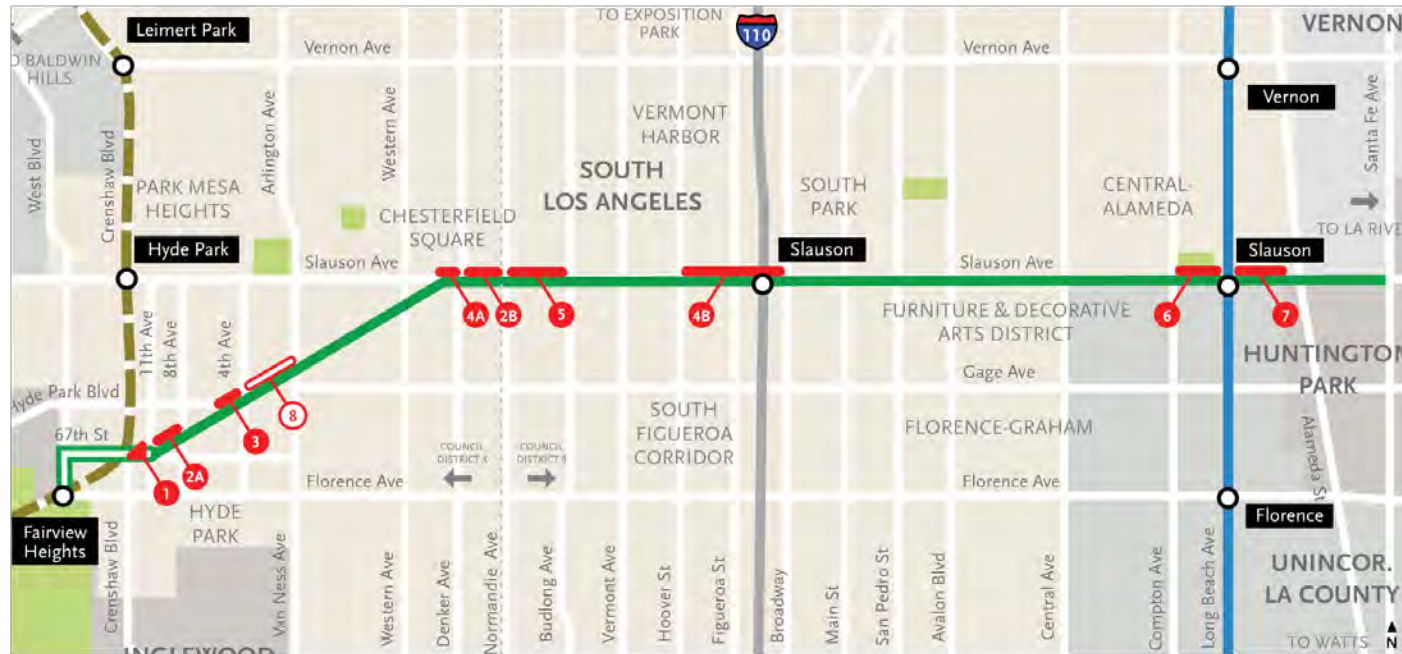
CITYWORKS DESIGN TEAM

15% DESIGN CONCEPTS 12.13.16 | MIX – 2

# Opportunity Sites Map

Information as of December 13, 2016

Areas with additional ROW beyond typical 30' width



## Legend

- Metro Right-of-Way (ROW)
- Non-Metro ROW
- Crenshaw/LAX Line
- Silver Line
- Blue Line
- O Metro LRT Station

#	Additional ROW	Opportunity Sites
1	n/a	Trailhead Plaza at 67th St & 11th Ave (7,500 sq ft)
2A 2B	20 ft	11th Ave to 8th Ave & Denker Ave to Normandie Ave (44,000 sq ft)
3	10-14 ft	Hyde Park Neighborhood (13,500 sq ft)
4A 4B	10 ft	Slauson Ave Crossing and Silver Line Station / 110 Freeway Underpass (29,000 sf)
5	50 ft	Normandie Ave to Budlong Ave (65,000 sq ft)
6	n/a	Augustus F. Hawkins Natural Park Frontage (partial segment included in 30 ft ROW)
7	40 ft	Blue Line Station and Trailhead (72,000 sq ft)
8	25-48 ft	Potential: BNSF Parcel (43,000 sq ft)



LOS ANGELES COUNTY METROPOLITAN TRANSPORTATION AUTHORITY  
ACTIVE TRANSPORTATION RAIL TO RIVER CORRIDOR – SEGMENT A

CITYWORKS DESIGN TEAM  
15% DESIGN CONCEPTS 12.13.16 | REF – 1



# Opportunity Sites

Information as of December 13, 2016

## Segment A-1: Fairview Heights Station to 8th Ave



### LEGEND

#### Open Space and School Campuses

- Public Park
- Publicly Accessible Private Open Space
- School

#### Recreational Destinations

- Metro Opportunity Site
- 1 Edward Vincent Junior Park
- 2 11th Ave Park

#### Civic/Institutional Destinations

- 1 LA Co. Dept. of Public Social Services

#### Schools

- 1 Hyde Park Children's Center
- 2 YES Academy/Hyde Park Elem.
- 3 Luskini Academy/Crenshaw Arts/Tech Charter H.S.

#### Cultural Destinations

- 1 Amphitheater

#### Medical Destinations

- 1 St. John's Community Health Center

#### Religious Destinations

- 1 Maranatha Community Church
- 2 Greater Deliverance COGIC
- 3 Guidance Church of Religious Science
- 4 Love Lifted Me Missionary Baptist
- 5 Mision Cristiana El Amor de Cristo
- 6 New Life Bible Church

#### Commercial Destinations

- 1 Check cashing store
- 2 Stone's Grocery and Market

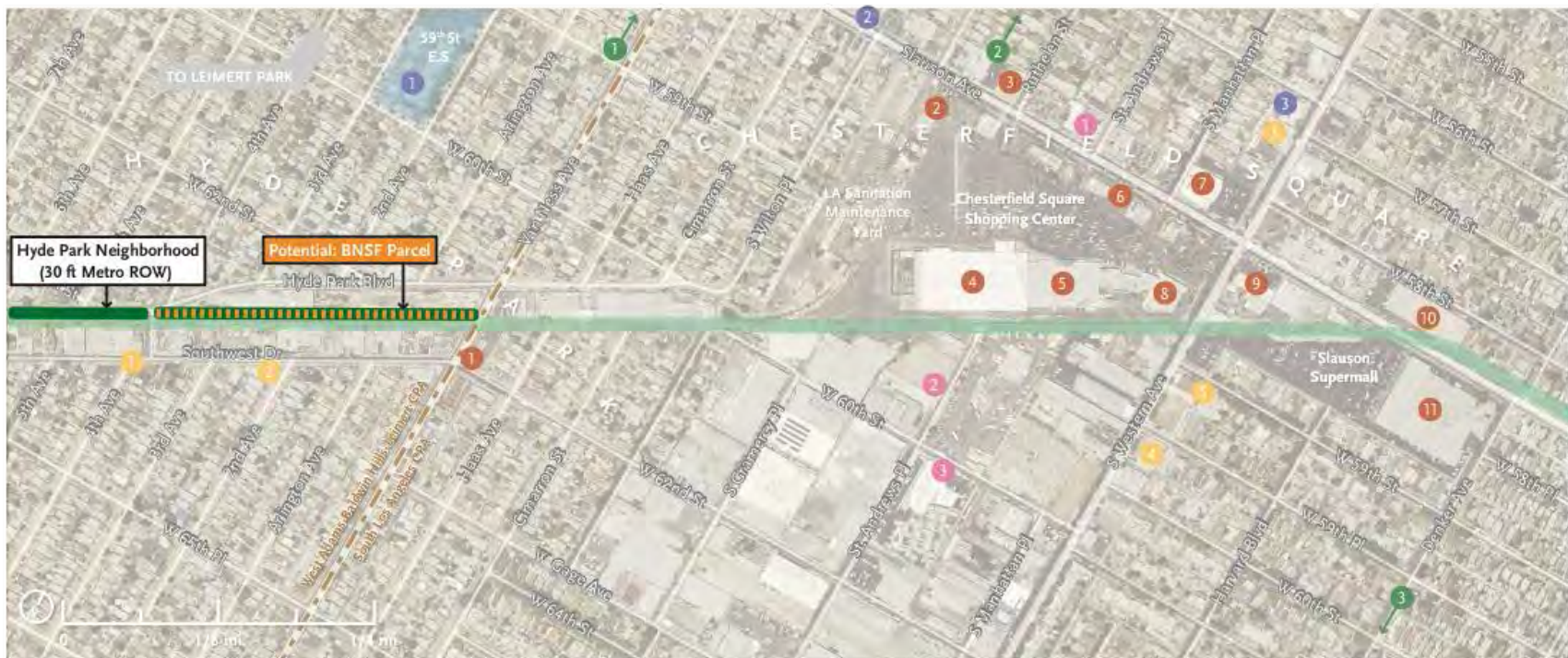
### PROJECT KEY PLAN



# Opportunity Sites

Information as of December 13, 2016

Segment A-2: Hyde Park Blvd to S Western Ave



## LEGEND

### Open Space and School Campuses

School

### Recreational Destinations

- Metro Opportunity Site
- Non-Metro Opportunity Site
- Van Ness Recreation Center
- Chesterfield Square Park
- Harvard Recreation Center

### Civic/Institutional Destinations

- LAFD Fire Station 66
- PIA Training Field
- SLA Animal Care Center

### Schools

- 59th St Elementary
- Minds N Motion Learning Center
- Learn 4 Life

### Religious Destinations

- Western Hts Bible Church
- New Vision Church
- Testimonial Cathedral COGIC
- Oasis Centro Cristiano
- House of God Apostolic Church

### Commercial Destinations

- Vanness Mini Market
- Active Recycling
- Family Dollar
- Home Depot
- Food 4 Less
- Various fast food and food retail
- Big Lots
- Walgreens
- Check cashing store
- Extra Space Storage

## PROJECT KEY PLAN





# Opportunity Sites

Information as of December 13, 2016

Segment A-3: S Western Ave to Menlo Ave



## LEGEND

### Open Space and School Campuses



### Recreational Destinations

- Metro Opportunity Site
- Harvard Rec Center
- Vermont Gage Park
- Hoover Gage Park

### Civic/Institutional Destinations

- People Who Care Youth Center
- Vermont Slauson Econ. Dev. Corp.

### Schools

- YouthBuild Charter
- Budlong Elementary
- Lou Dantzler Charter
- John Muir Middle
- Park Huerta Primary
- Nativity Catholic School

### Cultural Destinations

- Southern California Library

### Religious Destinations

- Testimonial Cathedral COGIC
- Primer Amor Pentecostal
- Oasis Centro Cristiano
- House of God Apostolic Church
- Embajada de Dios
- Abiding Love
- Nativity Catholic Church

### Commercial Destinations

- Fast food/retail
- Food 4 Less
- Big Lots
- Walgreens
- Check cashing store
- Extra Space Storage
- Slauson Supermall
- El Super
- Chase Bank
- Bank of America

## PROJECT KEY PLAN





# Opportunity Sites

Information as of December 13, 2016

Segment A-4: Menlo Ave to S San Pedro Pl



## LEGEND

### Open Space and School Campuses

- Public Park
- Other Open Space
- School

### Recreational Destinations

- Metro Opportunity Site
- Avalon Green Alley Network
- 61st St Pocket Park

### Civic/Institutional Destinations

- 1 HOPICS
- 2 Brotherhood Crusade
- 3 LA County Probation Reporting
- 4 Weber Community Center

### Schools

- 1 Augustus F. Hawkins H.S.
- 2 61st St Elementary
- 3 Aspire Slauson Academy
- 4 Estrella Elementary
- 5 Maya Angelou H.S.

### Medical Destinations

- 1 St. John's Well Child & Family Ctr
- 2 Hubert Humphrey Health Center

### Religious Destinations

- 1 Church of the Living God
- 2 Second AME Church
- 3 Figueroa Church of Christ
- 4 Greater Cornerstone Baptist
- 5 Greater Good News
- 6 Greater New Canaan
- 7 True Samaritan Baptist

### Commercial Destinations

- 1 Food retail/convenience
- 2 Young's Market
- 3 Hercules Market
- 4 Magaly's Mini Market
- 5 Lupita Market
- 6 Mi Chapita Mini Market

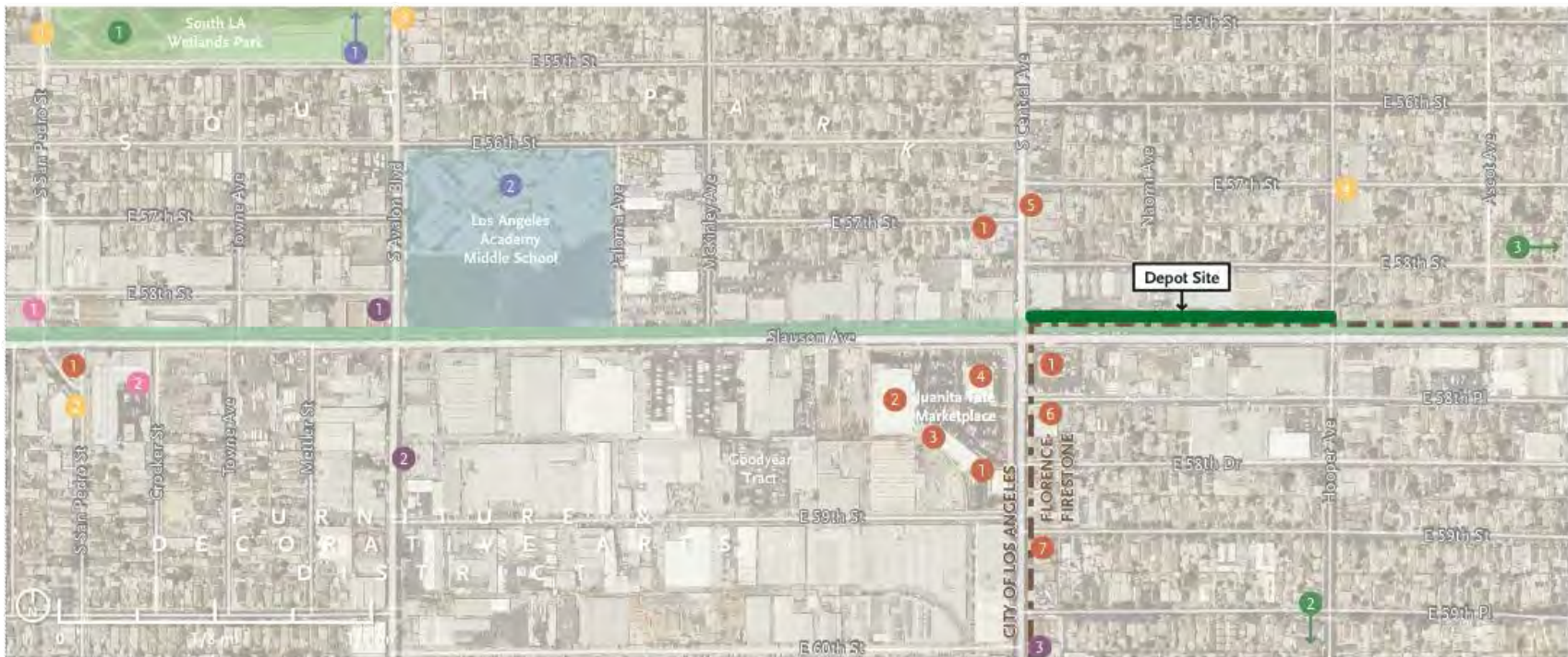
## PROJECT KEY PLAN



# Opportunity Sites

Information as of December 13, 2016

## Segment A-5: S San Pedro Pl to Ascot Ave



### LEGEND

#### Open Space and School Campuses

- Public Park
- School

#### Recreational Destinations

- Metro Opportunity Site
- South Los Angeles Wetlands Park
- Mary M. Bethune Park
- Augustus F. Hawkins Nature Park

#### Civic/Institutional Destinations

- LA County Probation Reporting
- Weber Community Center

#### Schools

- Maya Angelou H.S.
- Los Angeles Academy M.S.

#### Medical Destinations

- Davita Dialysis
- Kennedy Occupational Medical Center
- Central City Community Health Center

#### Religious Destinations

- Tabernacle COGIC
- Casa de Gracia
- Bethlehem Temple Missionary Baptist Church
- First Missionary Baptist Church

#### Commercial Destinations

- Fast food/food retail
- Northgate Gonzalez
- Chase Bank
- CVS Pharmacy
- Raquelito's Market
- AutoZone
- Bernardo's Market

### PROJECT KEY PLAN





# Opportunity Sites

Information as of December 13, 2016

Segment A-6: Ascot Ave to Malabar St



## LEGEND

### Open Space and School Campuses

- Public Park
- School

### Recreational Destinations

- Metro Opportunity Site
- 1 Augustus F. Hawkins Nature Park
- 2 Slauson Multipurpose Center
- 3 Pueblo Del Rio Basketball Court
- 4 El Parque Nuestro
- 5 Raul R. Perez Memorial Park

### Civic/Institutional Destinations

- 1 NCNW Wellness Station & Playground
- 2 Pueblo Del Rio Public Housing

### Schools

- 1 Alliance Kory Hunter M. S.
- 2 PACE Headstart
- 3 Lillian Elementary
- 4 Linda Esperanza Marquez H.S.
- 5 Crescent College

### Medical Destinations

- 1 Clinica la Victoria

### Religious Destinations

- 1 Morning Star COGIC
- 2 Greater Holy St. John Baptist Church
- 3 San Juan Bosco

### Commercial Destinations

- 1 Grace Super Market
- 2 Big Saver Foods
- 3 99c Mkt Matamoros
- 4 Food retail/convenience
- 5 Pacific Center Shopping Center

## PROJECT KEY PLAN



# Cul-de-Sac Access



Streets that terminate into Metro's ROW (10th Ave, Haas Ave, Cimarron St, Wilton Pl, Saint Andrews Pl)



Cul-de-sac access to the LA River at McConnell Avenue creates a welcoming entrypoint



Haas Ave cul-de-sac view; note City of Los Angeles alley to left and right along ROW



Birdseye aerial with cul-de-sac concept in 3 locations



LOS ANGELES COUNTY METROPOLITAN TRANSPORTATION AUTHORITY  
ACTIVE TRANSPORTATION RAIL TO RIVER CORRIDOR – SEGMENT A

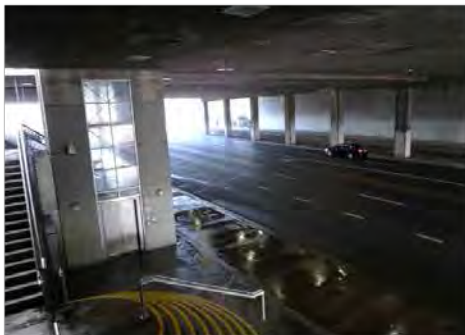
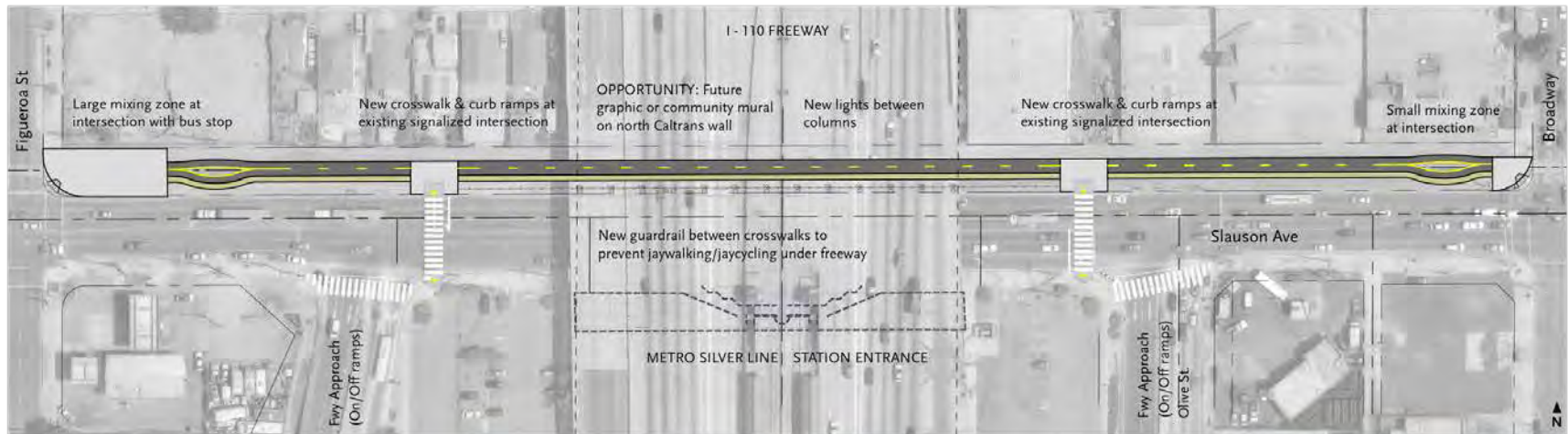
CITYWORKS DESIGN TEAM  
15% DESIGN CONCEPTS 12.13.16 | MIX – 3



# Silver Line Station / 110 Fwy Underpass



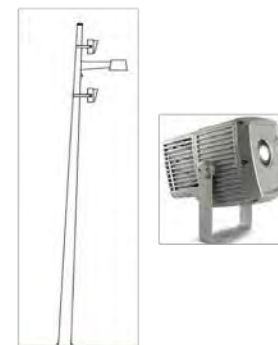
## Underpass and Access Concept (40' Metro ROW)



Silver Line Slauson Station's entrance under the I-110 freeway



An example of a bike path under the freeway (Culver Median Bike Path)



Pole lights can hold uplights or wall lighting for a future community-based graphic or mural



General location of new crosswalk east of fwy



LOS ANGELES COUNTY METROPOLITAN TRANSPORTATION AUTHORITY  
ACTIVE TRANSPORTATION RAIL TO RIVER CORRIDOR – SEGMENT A

CITYWORKS DESIGN TEAM  
15% DESIGN CONCEPTS 12.13.16 | MIX – 4



# Silver Line Station / 110 Fwy Underpass



## Underpass and Access Concept (40' Metro ROW)



Per Metro's First Last Mile Strategic Plan, underpass enhancements can encourage walking and cycling with wayfinding, infographics, lighting and other safety features



Existing Metro ROW at 110 Freeway underpass



Recycled concrete rubble landscape at the Queens Plaza Pedestrian and Bicycle Improvement Project (New York City, NY)



Example of uplighting under a freeway (San Jose, CA)



Textured stone surface and boulder landscape at the Culver Bike Path under the 405 Freeway



Example of a locally designed mural along bicycle and pedestrian paths (Detroit Dequindre Cut)



Example of artist-designed guardrails that can enhance the space and safety at the underpass curb edge



Guardrails at the curb edge could integrate sculptural metalwork



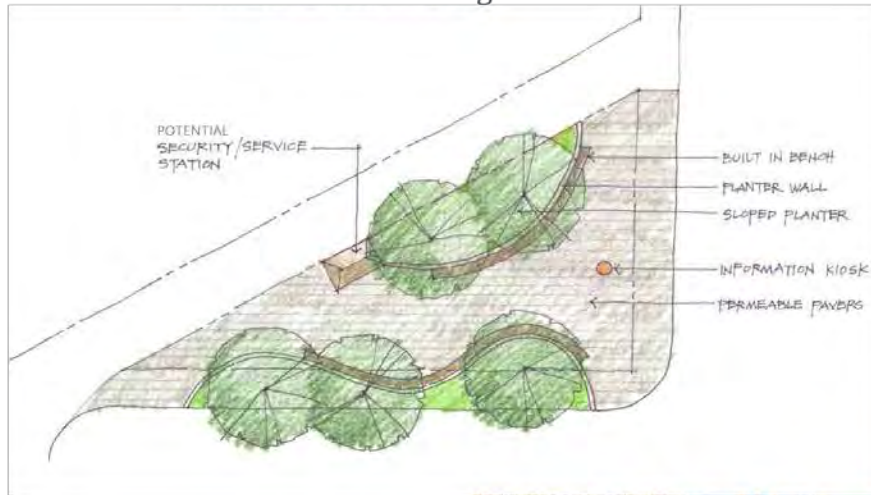
LOS ANGELES COUNTY METROPOLITAN TRANSPORTATION AUTHORITY  
ACTIVE TRANSPORTATION RAIL TO RIVER CORRIDOR – SEGMENT A

CITYWORKS DESIGN TEAM  
15% DESIGN CONCEPTS 12.13.16 | MIX – 5

# Trailhead Plaza at 67th St & 11th Ave



## Option 1 Trailhead with open plaza and seat walls at edge



## Option 2 Trailhead plaza with circular tree benches

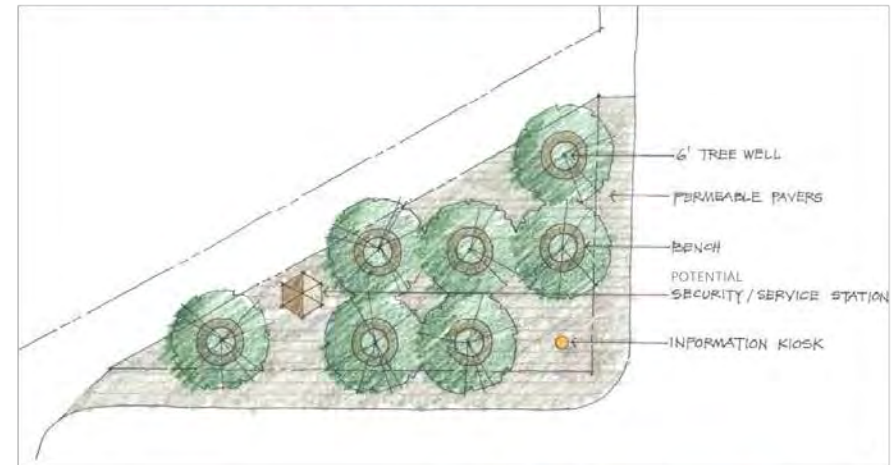


Photo of site taken from 67th Ave looking north



Option 1 proposes an open plaza with wall seating along its edges, similar to this image with drought tolerant plants and grasses



The triangular ROW is close to the Fairview Heights Station and can function as a "trailhead"



A bike repair/rental station in the plaza could serve as a hub for a growing bike community



The plaza could include a rail history exhibit if desired by community



Photo of site taken from 11th Ave looking west



Option 2 provides shade and circular seating throughout the plaza



An information kiosk at the western "trailhead" could orient users to the paths



A bike rental / repair station can be an important amenity



Security ambassadors could enhance safety and security



LOS ANGELES COUNTY METROPOLITAN TRANSPORTATION AUTHORITY  
ACTIVE TRANSPORTATION RAIL TO RIVER CORRIDOR – SEGMENT A

CITYWORKS DESIGN TEAM

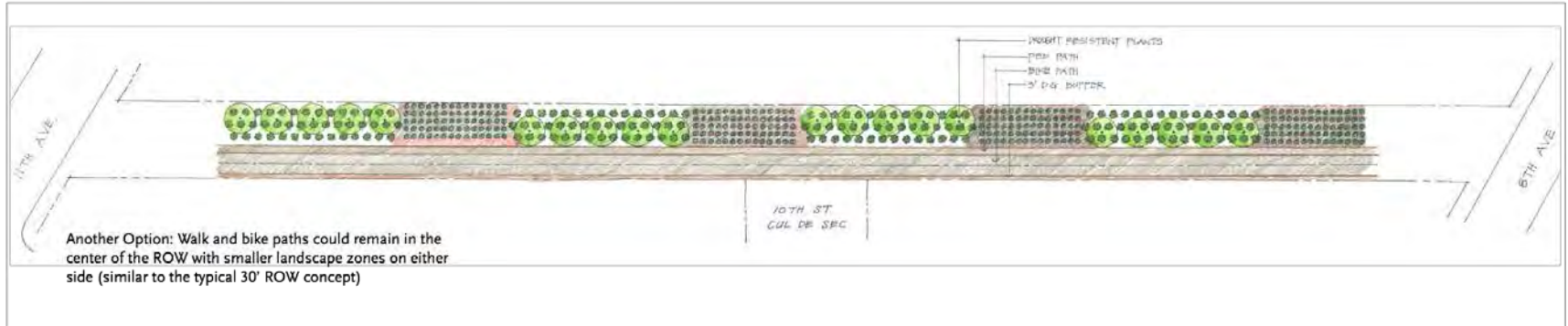
15% DESIGN CONCEPTS 12.13.16 | HYDE – 1



# 11th Ave to 8th Ave



## Opportunity Site (50' Metro ROW)



View of proposed site from 11th Ave



View of site from 8th Ave



Agave is an example of a plant that lends itself to an orderly, low maintenance design



Planting design should discourage loitering and encampment

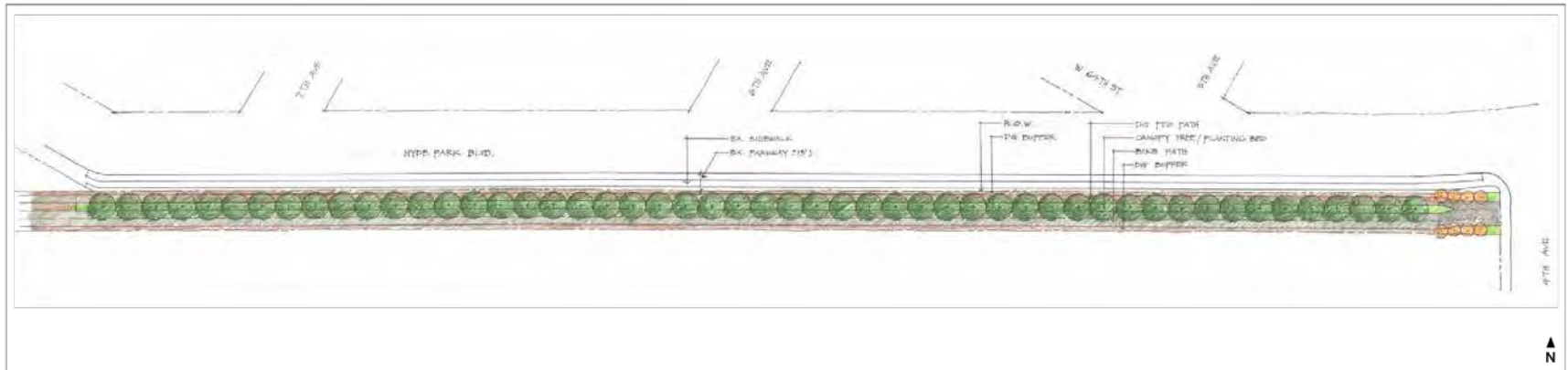


Palo Verde is an example of a tree that is striking and drought tolerant

# Hyde Park Neighborhood



## Option 1 Tree-lined / Seating (30' Metro ROW)



Looking west from the corner of 4th Ave and Hyde Park Blvd



View of proposed site from 6th Ave



A tree-lined bioswale along the pedestrian path



Colorful California native plants



Low growing native grass and flowering perennials



LOS ANGELES COUNTY METROPOLITAN TRANSPORTATION AUTHORITY  
ACTIVE TRANSPORTATION RAIL TO RIVER CORRIDOR – SEGMENT A

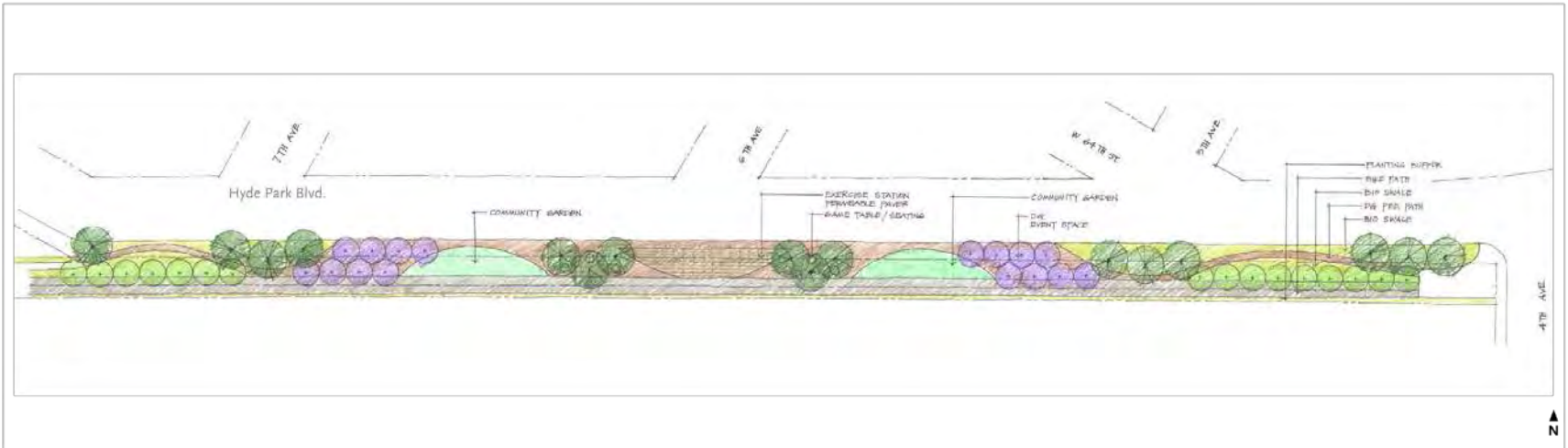
CITYWORKS DESIGN TEAM  
15% DESIGN CONCEPTS 12.13.16 | HYDE – 3



# Hyde Park Neighborhood



## Option 2 Park-like / Active Uses (30' Metro ROW + 12' City of LA ROW)



CAC members thought the Hyde Park Blvd segment could be park-like



Example of native grass punctuated by low-growing, native perennials



A wider ROW provides opportunities for programmable space that could include game tables



Hyde Park Parkway can offer much needed space for exercise and play



Example of community garden & tool shed



LOS ANGELES COUNTY METROPOLITAN TRANSPORTATION AUTHORITY  
ACTIVE TRANSPORTATION RAIL TO RIVER CORRIDOR – SEGMENT A

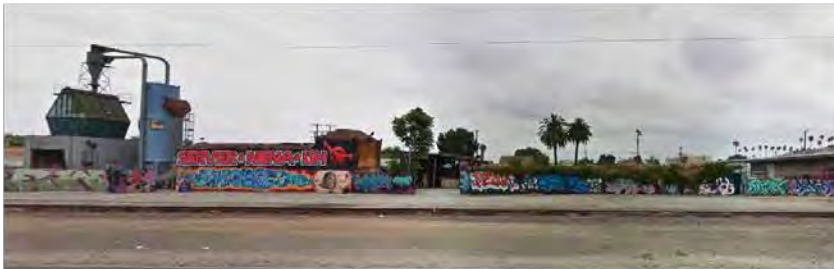
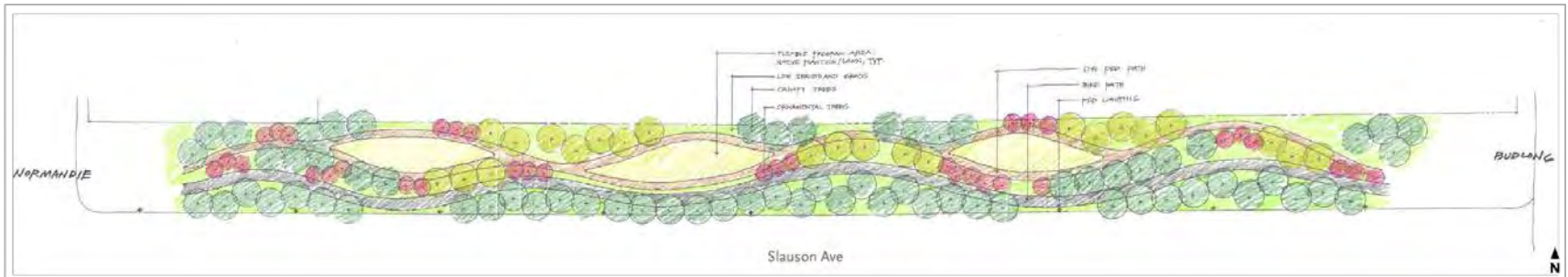
CITYWORKS DESIGN TEAM  
15% DESIGN CONCEPTS 12.13.16 | HYDE – 4



# Normandie Ave to Budlong Ave



## Option 1 Bio-Diverse / Opportunity Site (80' Metro ROW)



A portion of the proposed site between Normandie Ave and Budlong Ave



Peaceful pedestrian and bike paths with native plant landscape



Example of native plant garden



Built-in seating could provide resting place for pedestrians and cyclists



The large ROW could include quieter zones within the garden



LOS ANGELES COUNTY METROPOLITAN TRANSPORTATION AUTHORITY  
ACTIVE TRANSPORTATION RAIL TO RIVER CORRIDOR – SEGMENT A

CITYWORKS DESIGN TEAM  
15% DESIGN CONCEPTS 12.13.16 | TWS – 1

# Normandie Ave to Budlong Ave



## Option 2 Drought Tolerant / Opportunity Site (80' Metro ROW)



By keeping the walk and bike paths along the Slauson edge, a programmable public space can be created on the remaining ROW (This approach could work with a range of landscape and program concepts, even a modified Option 1)



This concept provides open space for different community-determined activities



Option 2 provides flexible, open space that could accommodate food trucks and dining on special nights



Shaded by trees, farmers' markets and other pop-up events could be programmed by local community groups



The wider ROW has space for exercise stations, which community members have said is a high priority



LOS ANGELES COUNTY METROPOLITAN TRANSPORTATION AUTHORITY  
ACTIVE TRANSPORTATION RAIL TO RIVER CORRIDOR – SEGMENT A

CITYWORKS DESIGN TEAM  
15% DESIGN CONCEPTS 12.13.16 | TWS – 2



# Tree Pattern Options

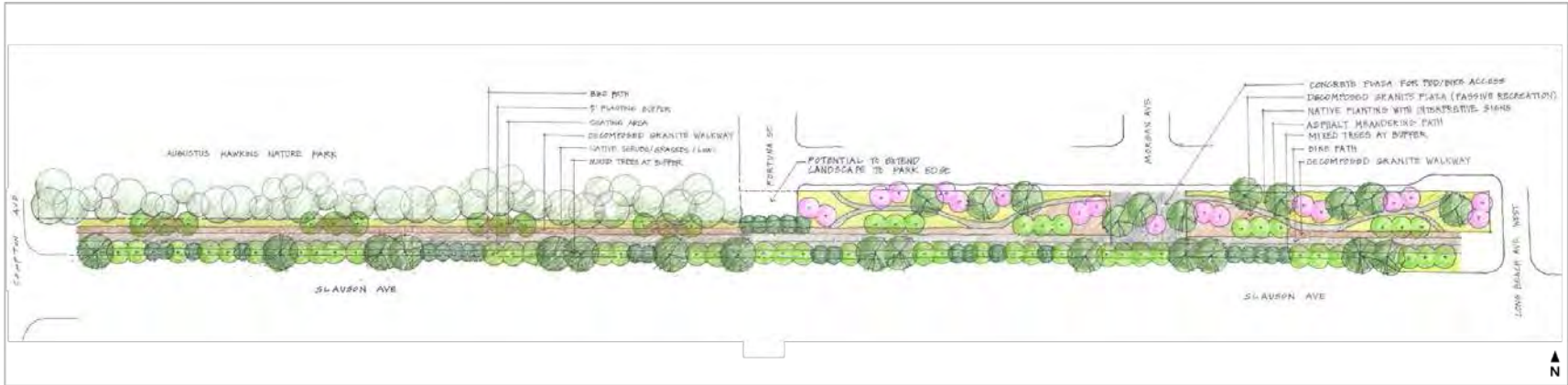
Information as of December 13, 2016



# Augustus F. Hawkins Natural Park Frontage



Native Landscape (25' - 60' Metro ROW)



View of Augustus F. Hawkins Natural Park frontage



Looking west toward Augustus F. Hawkins Natural Park



Elements from Augustus F. Hawkins Natural Park can influence the look and feel of the new path



This beloved park is where neighbors gather to socialize, kids learn to ride bikes, and birthdays are celebrated



Flexible open space offers a place to play



LOS ANGELES COUNTY METROPOLITAN TRANSPORTATION AUTHORITY  
ACTIVE TRANSPORTATION RAIL TO RIVER CORRIDOR – SEGMENT A

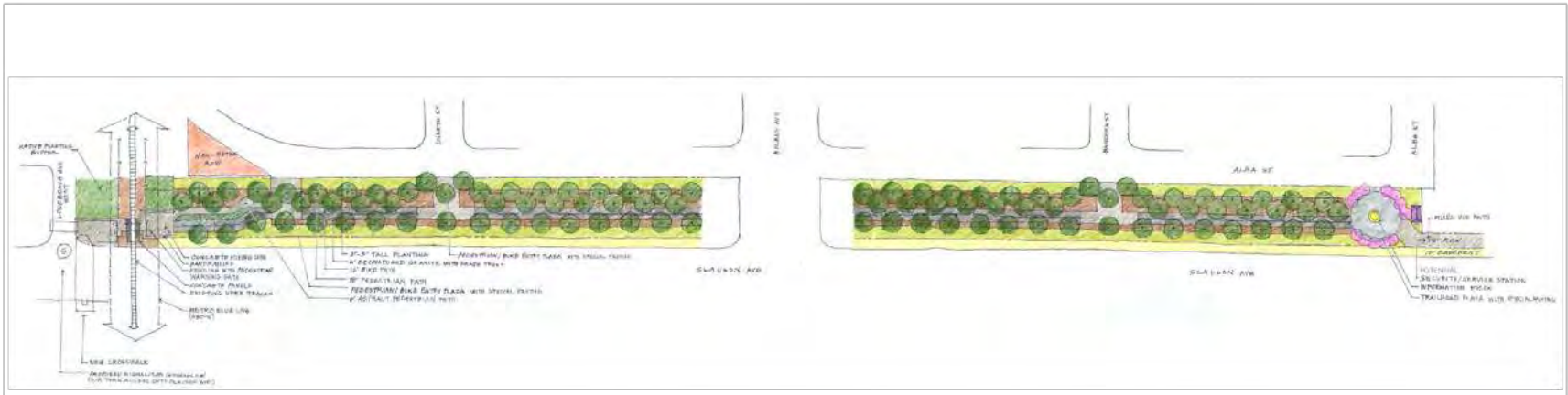
CITYWORKS DESIGN TEAM  
15% DESIGN CONCEPTS 12.13.16 | BLUE – 1



# Blue Line Station and Trailhead



## Option 1 Tree-lined Open Plazas (60' Metro ROW)



West end of proposed site (Holmes Ave to Metro Blue Line Station)



East end of proposed site (Alba Ave looking west toward Holmes Ave)



Trees line both sides of the pedestrian and bike paths to provide shade and extra buffer



Information kiosk could provide information about the corridor and neighborhood



Trees shade open plaza area



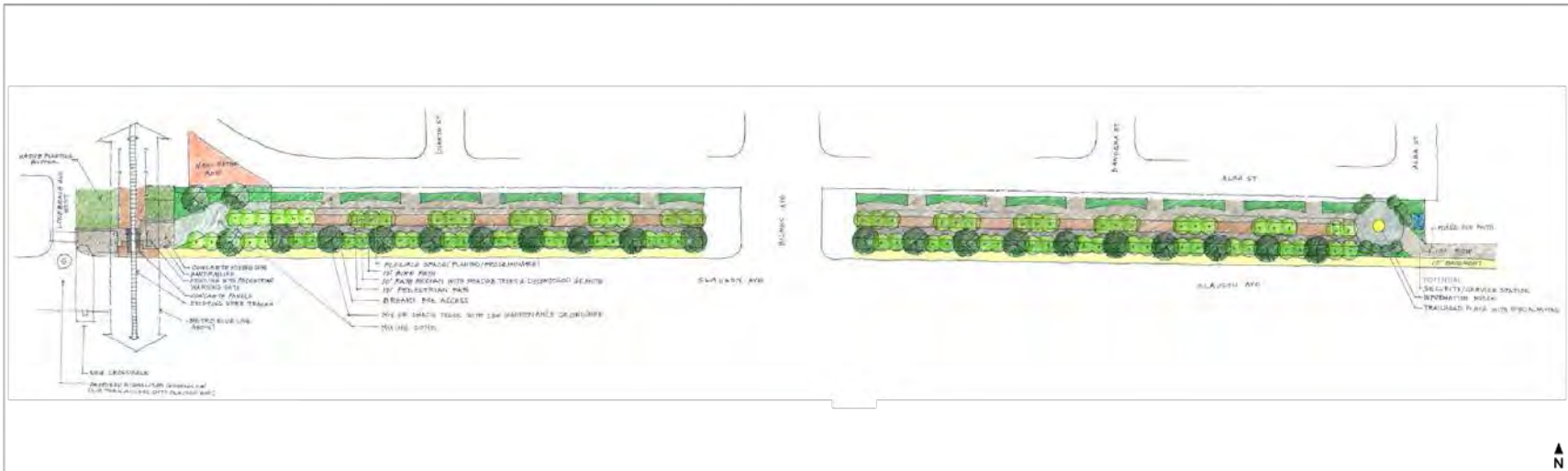
LOS ANGELES COUNTY METROPOLITAN TRANSPORTATION AUTHORITY  
ACTIVE TRANSPORTATION RAIL TO RIVER CORRIDOR – SEGMENT A

CITYWORKS DESIGN TEAM  
15% DESIGN CONCEPTS 12.13.16 | BLUE – 2

# Blue Line Station and Trailhead



## Option 2 Active Uses / Flexible Spaces (60' Metro ROW)



Unique planting along north edge is a special, park-like feature



Space along north edge creates opportunity for exercise area



Native plant material provides thick buffer from Slauson Ave



Extra space provides the opportunity for community defined recreation and activities

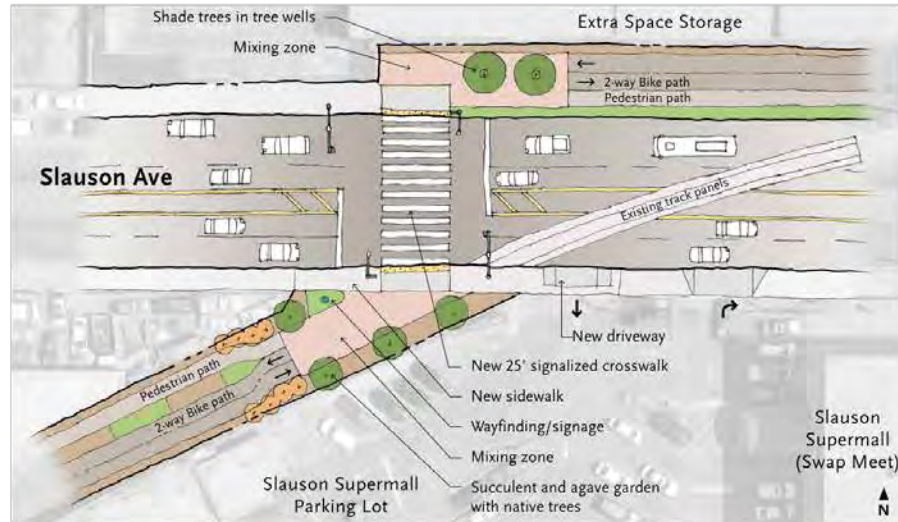


LOS ANGELES COUNTY METROPOLITAN TRANSPORTATION AUTHORITY  
ACTIVE TRANSPORTATION RAIL TO RIVER CORRIDOR – SEGMENT A

CITYWORKS DESIGN TEAM  
15% DESIGN CONCEPTS 12.13.16 | BLUE – 3



# Slauson Ave Crossing



Looking east toward Slauson Supermall (Swap Meet) and location of new signalized crossing



Left turns are prohibited onto Slauson when exiting the Supermall parking lot



New raised sidewalk will provide level surface and safer conditions for pedestrians with wheels



New raised sidewalk will prevent vehicles from cutting through existing pedestrian zone to access Slauson Supermall driveway



LOS ANGELES COUNTY METROPOLITAN TRANSPORTATION AUTHORITY  
ACTIVE TRANSPORTATION RAIL TO RIVER CORRIDOR – SEGMENT A

CITYWORKS DESIGN TEAM  
15% DESIGN CONCEPTS 12.13.16 | REF – 3

# Lighting

Information as of December 13, 2016

- Comply with Illuminating Engineering Society, Metro, City of LA Bureau of Street Lighting Standards
- High-efficiency light emitting diode (LED) lamps
- Elevated light levels for increased visibility
- Balance safety and excessive brightness
- Exceed IES standard for “medium pedestrian conflict zone”
- 110 Fwy underpass illuminated 24-hours/day
- Ability to integrate security phones, cameras on poles



# Project Design Cost Considerations

Information as of December 13, 2016

## Mid-block Concept (Typical 30' ROW)

- Asphalt paved walkway and 2-way bike path
- Lighting (spaced every 60')
- Fencing at ROW edge where needed (Metro standard panelized)
- Furnishings & signage
- Bioswales for stormwater run-off treatment with low fencing at edge
- Shade trees
- Diversity of trees/plant species
- Boulders and low, drought tolerant landscape in street buffer



Existing photo of Slauson west of San Pedro (Note: Metro ROW ends 10' from building face in ballast area)



COMPOSITION  
30' typical ROW

- 11' street buffer
- 5' walking path
- 12' bike path
- 2' property line buffer



**Metro**

Examples of bioswale on pedestrian path (Woodman Ave) and between bikeway & thoroughfare (Queens Plaza Bikeway, NY)



# CAC Input

Information as of December 13, 2016

- 1. Full Group**  
Typical mid-block concepts
- 2. Smaller Rotations**  
Mixing Zones  
Hyde Park Area  
Trees & Wide Spaces  
Blue Line Area
- 3. Discussion Summary & Next Steps**





# Input on Typical Mid-block Concepts

Information as of December 13, 2016



**Slauson Corridor TYP-2**



**Hyde Park/Chesterfield Square TYP-3**

# Key Questions for CAC

Information as of December 13, 2016

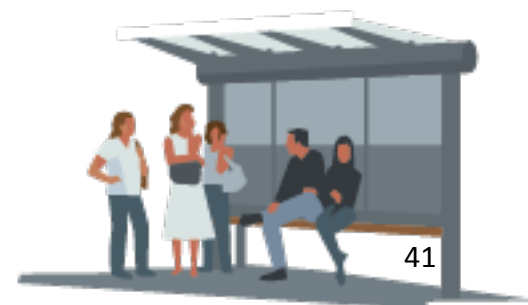
*Based on the 15% design concepts, we'd like to know:*

1. Which concepts most address your interests, vision and concerns?
2. How do you envision the opportunity spaces being used?
3. Where options are shown, do you have a preference?
4. Are we on the right track?





# NEXT STEPS



# Outreach

Information as of December 13, 2016

## Community Meeting Notification Efforts

- > Elected official briefings
- > Direct mail – project database, property owners and occupant database
- > E-blasts notice and reminders
- > Public counter distribution of notice to:
  - Cities, community groups / organizations, churches, libraries, parks, senior and community centers, and schools
- > Tool kit distribution to Community Advisory Committee members and other stakeholders
- > Metro The Source article
- > Project helpline
- > Project webpage
- > Facebook Event
- > Press Release



**Metro**





*Thank you*

