

# ESSENTIAL SCHOOL-WIDE & CENTER-WIDE PRACTICES IN LITERACY

Pre-Kindergarten and Elementary Grades

Dr. Melissa Usiak

Michigan ASCD

Michigan State University

<https://www.youtube.com/watch?v=arPCE3zDRg4>

# INTRODUCTION

- Your varying role as leaders
- Organizational change
- Seek application
- Be unsatisfied



# ESSENTIAL SCHOOL-WIDE & CENTER-WIDE PRACTICE IN LITERACY

- Developed by the Early Literacy Task Force
- Intended to be read in concert with the Instructional & Coaching Practice Pre-K and K-3
- Ten recommended systems and practice for all Michigan Pre-K and elementary learning environments
- Presents a minimum “standard of care” for Michigan’s children
- Help with the WHY of your work (policies, procedures,

# TEN ESSENTIAL SCHOOL-WIDE & CENTER-WIDE PRACTICES IN LITERACY

1. Leadership team
2. Organizational climate
3. Learning environment
4. Professional learning
5. Literacy support in layers
6. Assessment systems
7. Instructional resources
8. Family engagement
9. Summer reading
10. Connections to community

# SCHOOL-WIDE ESSENTIAL #1 – THE LEADERSHIP TEAM

The leadership team is composed of instructional leaders committed to continuous improvements in literacy and ongoing attention to data.

# SCHOOL-WIDE ESSENTIAL #1 – THE LEADERSHIP TEAM

- Consider who is on a specific building level leadership team with whom you work (or have worked), the expertise each person offers, and the current function of the team.
- List each person on your Post-it (position not name).
- In a triad, compare your Post-its.

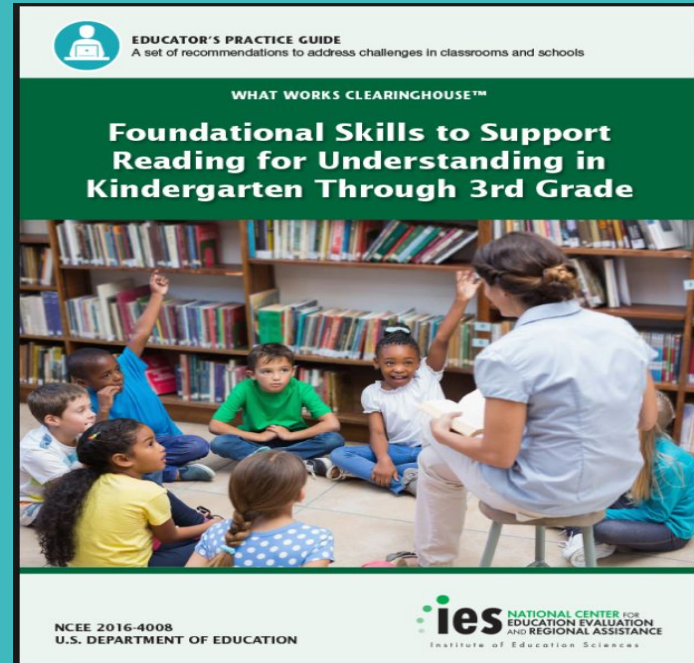
# SCHOOL-WIDE ESSENTIAL #1 – THE LEADERSHIP TEAM

Under the guidance of the lead administrator, the school or program leadership team:

- Include members with **considerable and current expertise** in literacy and early childhood education

# SCHOOL-WIDE ESSENTIAL #1 – THE LEADERSHIP TEAM

- promote the implementation of evidence-based, high-quality literacy curriculum, instruction, and assessment aligned across the learning environment





# SCHOOL-WIDE ESSENTIAL #1 – THE LEADERSHIP TEAM

- develops a **vision, mission, set of goals, and educational philosophy** that guide school climate and children's learning and that are shared school-wide and aligned across all ages and grade levels, including Pre-K, and across all professional roles for the purpose of continuous improvement

## SCHOOL-WIDE ESSENTIAL #1 – THE LEADERSHIP TEAM

- maintains a comprehensive system for assessing children's strengths and needs and using that information to inform children's education

## SCHOOL-WIDE ESSENTIAL #1 – THE LEADERSHIP TEAM

- focuses on multiple points of data and keeps the best interests of children paramount in assessment, knowing the primary purpose is to improve teaching and learning

## SCHOOL-WIDE ESSENTIAL #1 – THE LEADERSHIP TEAM

- ensures a **collaborative problem-solving approach** that may include administrators, teachers, parents, aides, reading specialists, library media specialists, special educators, and others as needed

## **SCHOOL-WIDE ESSENTIAL #1 – THE LEADERSHIP TEAM**

- distributes leadership throughout the organization for the purpose of building leadership capacity among all staff.

# SCHOOL-WIDE ESSENTIAL #1 – THE LEADERSHIP TEAM

## *Affinity Diagram Revisited*

- Revisit group diagrams.
- Who is missing?
- How can the team be more effective?
- How can you as a coach influence and strengthen the team with this new learning?
- Share-out large group.

## **METACOGNITIVE REFLECTION - 5 MINUTES**

- *What have you learned during this session?*
- *How does your learning during this session apply to your current work?*

**Thank you for taking this step to learn more.**

Watch for more learning opportunities around how we can support literacy learning at the organizational leadership level.

Contact me: Melissa Usiak

[musiak@michiganascd.org](mailto:musiak@michiganascd.org)

517.525.3369