

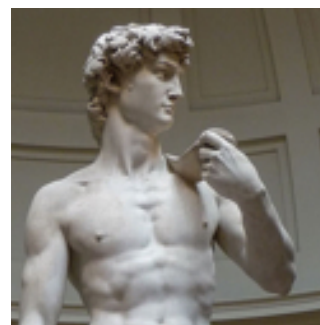
The Weekly Beacon

**The Weekly Update from St. Bede's Church
May 31, 2018**



The Voices of Scripture

A Lectionary is a table of scripture readings that are appointed for worship—Old Testament, psalm, New Testament, and Gospel. The practice of having specific texts for a specific day began as early as the fourth century, and has been revised several times over the years. Today, mainline churches use the Revised Common Lectionary (RCL). But even within a common lectionary, there are choices, especially this season of the year between Pentecost and Advent, called Ordinary Time or the Season after Pentecost.



In recent years we have used Track 2, in which the Hebrew Bible (Old Testament) readings provide some thematic coordination with the Gospel. This year, however, we are exercising our other option, Track 1. It provides for a semi-continuous reading of the Old Testament narratives, which gives you the opportunity to hear some more of the great Old Testament stories as well as capture some of these stories in a better context. It also has better inclusion of women and their role in salvation history, giving us texts that have not been heard on Sunday before.

This year, Year B, for example, we hear the great saga of David—how this farm boy was chosen by God, his love for Jonathan, his conquering of Jerusalem and establishment of an empire. He was a musician and poet, and is considered the author of many psalms. David's massive wealth and power didn't stop him from a ruthless sex addiction. Nonetheless, he has often been hailed as a model king, and is the subject of countless literary, artistic, and musical works.

Come hear the story of David (and Goliath, and Jonathan, and Bathsheba, and Absalom and ...) as well as some of the Wisdom literature of the Hebrew Bible this summer. It is a rich story, deserving of its place in the Jewish, Christian, and Muslim traditions.

Catherine+

You may read the sermon from last Sunday [here](#).

Music Notes

Sunday's prelude is based on a hymn tune adapted from the fourth piano piece in Robert A. Schumann's *Nachtstücke*, Opus 23 (1839). It first appeared in J. Ireland Tucker's *Hymnal with Tunes, Old and New* (1872). Lani Smith (b. 1934) turned it back into a piano work with a meditation entitled "Lord Speak to Me" reflecting the most commonly paired hymn text with the tune by Frances R. Havergal. Introduced last week, our current Song of Praise is the canticle "The Song of Three Young Men." This song text was inserted in several Greek and Latin version of the Hebrew Bible in the third chapter of Daniel and was purported to have been sung by Shadrach, Meshach and Abednego. One commentator wrote of this canticle "Because of how great God is, when we try to explain God with certainty, we fall into trouble, and so, the *Benedictus es, Domine*, helps to remind me that when words fail, praise can take over." Offertory music this Sunday uses a very popular folk tune. O WALY WALY is a traditional English melody associated with the song "O Waly, Waly, gin love be bony," the words of which date back at least to Ramsay's *Tea Table Miscellany* (1724-1732), and as the setting for a folk ballad about Jamie Douglas. It is also well known in the Appalachian region of the United States. Several arrangers have set the tune to sacred texts. The 10:30 am choral anthem by Douglas E. Wagner uses the words of James F. Morris "Lord, all good things come from above." At 8 am a jazz influenced version by J. Bert Carlson (b. 1937) will be heard. In keeping with our exploration of the story of David in the Hebrew Bible this Summer for our first readings each week we start this Sunday with the calling of Samuel. The most famous sacred song on this theme has to be "Here am I, Lord" by Dan Schutte. Schutte said he had been sick with flu when he got a last minute request to compose a work for an ordination service on a theme taken from Isaiah chapter 6. Not feeling well he was struggling with the composition and stated "I remember sitting at my desk with a blank music score in front of me and asking God to be my strength. As I sat there praying for help, I remembered also the call of Samuel, where God came calling in the middle of the night and asked Samuel to do something beyond what he thought he was capable of." Thus the inspiration for this enduring song was born. Our Communion meditation version is by Jack Schrader while at 10:30 am we will also sing the original song. The Postlude is an original piano work by Ben Logan "Toccata Brillante" found in one of my recent purchases of piano literature for worship services.



Looking ahead to Summer Special Music—June 17 we will begin special music from Opera Apprentices and Desert Chorale singers for which there is opportunity to help the music budget by sponsoring a singer for a Sunday. See me, Jerry Nelson, for more details if this sponsorship might be possible for you.

Jerry Nelson, Music Director

Somos un Pueblo Unido Presentation

Sunday, June 3, at 1:30 pm

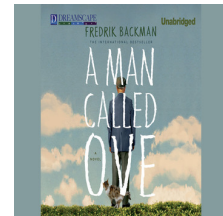
Ada Sallard from Somos un Pueblo Unido will give a presentation, in Spanish for the Hispanic congregation, on "Immigrant Civil Rights With Respect to ICE Authorities in the Context of Current Migratory Policy." The talk is sponsored by Somos and by St. Bede's Justice and Peace Committee. In Fellowship Hall.



St Bede's Book Club

Mondays, 12:00 pm

Discussion leader Penny Chlebicki asks that you please complete the book **A Man Called Ove** for our final discussion on Monday, June 4, 12-1:30pm, St. Bede's Meeting Room at St. John's.



Let's Go to the Movies: Please join us as we watch the **movie, A Man Called Ove** (1 hr 56 min), June 11, 12:00 - 2:30pm, at the home of Suzanne Gebhart, 45 Camino Quien Sabe. This subtitled Swedish movie will begin promptly at 12:15 pm. Tom Hanks will produce and star in the U.S. adaptation of this Oscar nominated highest grossing foreign film. (Google search: A Man Called Ove movie. Watch Trailer [here](#)).

For more information contact Njeri Nuru-Holm (n.nuru-holm@csuohio.edu or 216-225-2926).

St Bede's Open House

Sunday, June 10

Everyone is invited to what we've all been waiting to see: the progress on St. Bede's renovation. Three tour times are available: 12:00 noon (English), 1:00 pm (English), and 2:00 pm (Spanish). You may choose your time. You will walk through the striking new entrance, the wider narthex (zaguán), a gorgeously proportioned Common Room, and the substance of the newly designed church, classroom, parlor, meeting room, and so on. Wait until you see it yourself! You will be so pleased to walk from room to room and see what your aspirations and generosity have done.



Updated Sunday Lectionary Booklet Available

There is an updated Sunday Lectionary Booklet available in the office and Meeting Room for May 27 thru August 5, 2018.



Photographers!

Anyone with any good photos of events at St Bede's or involving St Beders, please send to Mother Catherine at mcvolland@aol.com. And please continue to take pictures whenever you can. We are refreshing our website and need lots of new photos. Thanks!



Bede's Backer

The Bede's Backer for May, Coleen Davidson, 470-6003. If you have special needs, please call the Bede's Backer.

If you would like to become a Bede's Backer, please call the office, 982-1133, or Coleen Davidson at 470-6003.



Message from the A-Team

Please complete a **Space Request Form** for all activities and meetings to be held at St John's. This way we can keep the calendar up-to-date and not double book the space!

Thank you.



Parish Directory

We like to keep the Parish Directory up-to-date. Please [email](#) the office with any changes or additions. If you wish to be in the directory and are not, please [email](#) the office. We distribute a current directory for the coming year annually at the Consecration Sunday luncheon. If you cannot attend or need one later in the year, you may pick one up in the office during office hours. Thank you.



Articles or Announcements for Weekly Beacon

If you would like to submit an article or announcement for the Weekly Beacon and/or the Sunday bulletin please send it to news@stbedesantafe.org by 10:00 am the Wednesday prior to the Thursday publication date.



St Bede's Temporary Location

St John's United Methodist Church,
1200 Old Pecos Trail, Santa Fe, NM 87505

Mailing address:
P.O. Box 5739, Santa Fe, NM 87502

Sunday Worship
8:00am Holy Eucharist
10:30am Holy Eucharist
12:30pm Santa Misa



Welcome to
ST BEDE'S
EPISCOPAL CHURCH
Santa Fe, New Mexico



1601 S. St. Francis Dr.
Santa Fe, NM 87505
505-982-1133
(@ SE corner of San Mateo,
enter on San Mateo)

Please view our website by clicking www.stbedesantafe.org

Copyright © 2014. All Rights Reserved.

St Bede's Episcopal Church, 1601 S. St. Francis Drive, Santa Fe, NM 87505

[SafeUnsubscribe™ {recipient's email}](#)

[Forward this email](#) | [Update Profile](#) | [About our service provider](#)

Sent by stbedesantafe@gmail.com in collaboration with

Constant Contact®

Try it free today