

# Adept Lynx Cart Transporter



The Adept Lynx<sup>®</sup> Cart Transporter is an Autonomous Intelligent Vehicle (AIV) designed to attach to moveable carts and transport them from a pickup location to a drop off location. Applications include line-side inventory replenishment, moving flow racks, transporting Work in Progress between process steps, and moving finished goods to the warehouse.

The Lynx Cart Transporter leverages Natural Feature Navigation to autonomously find a path through the facility without the need for any facility modifications. The Lynx Cart Transporter is safe to operate in existing doors and aisle ways as it can sense and avoid people, fork trucks and other objects in its path.

## Product Features and Benefits

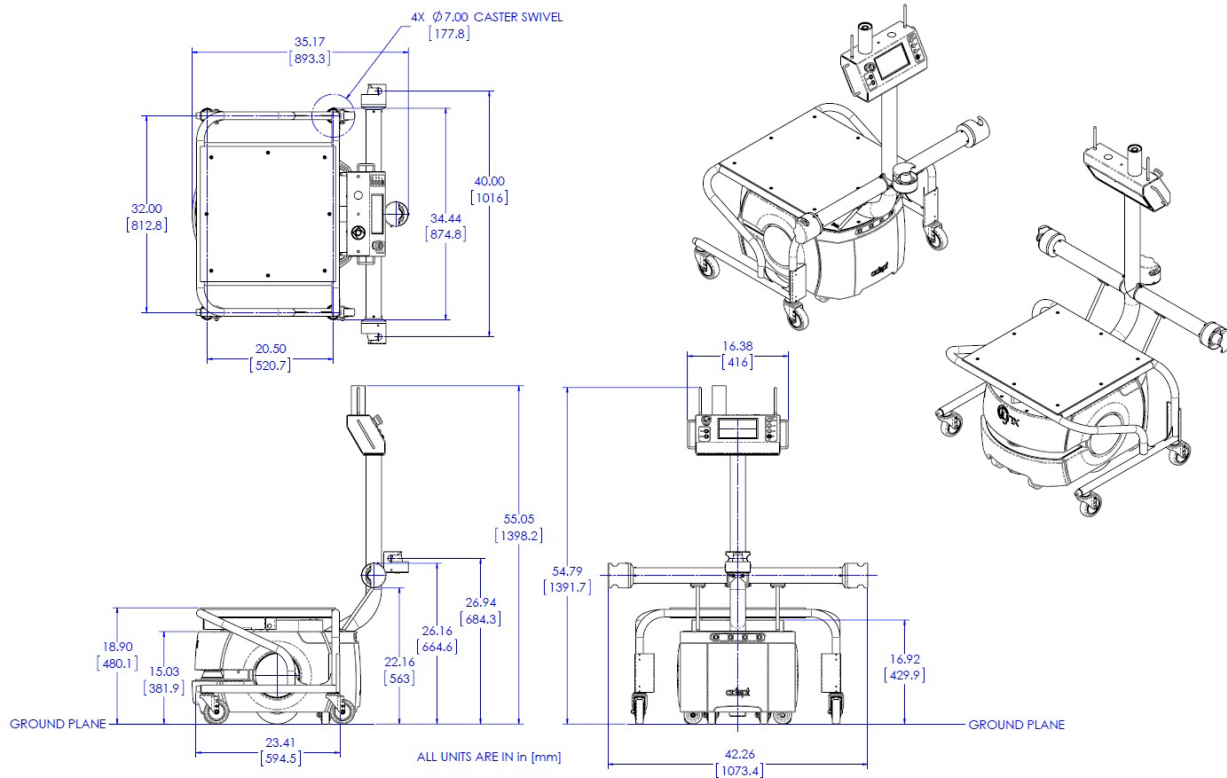
- Self-navigation software safely avoids people and obstacles.
- Lynx robots require no facility modifications making them easy to deploy.
- Cart Transporter can carry up to 130 kg payload capacity on level surface.
- Automatic attachment and detachment of carts enables “hands free” operation.
- Cart Transporters can be controlled as a fleet via the Enterprise Manager.

## Specification

Weight	79 kg (174 lbs)
Max Payload (On top of Cart Base)	
MC105	105 kg (231 lbs)
MC130	130 kg (287 lbs)
Max Speed	
MC105	1.35 m/s
MC130	0.9 m/s
Power	
Battery style	22-29 VDC LiFePO4
Capacity	60Ah
Run time	12 hours (continuous)
Recharge time	3.5 hours
Charging station	Automatic (included)
Auxiliary power	5, 12, 20 VDC
Mobility Overview	
Vehicle Weight	79 kg (174 lbs)
Floor Requirements	Level surface Hard concrete or linoleum
Tire Composition	Non-marking rubber
Suspension	Passive
Steering	Differential
Turning Radius	0 mm
Traversable Gap	15 mm
Traverse Sill	5 mm
Cart Base Dimensions	55.88 cm x 55.88 cm (22"x22")

# ADEPT LYNX CART TRANSPORTER

## Dimensions Adept Lynx Cart Transporter



## The Adept Lynx Cart Transporter includes:

- Adept Lynx mobile base with low obstacle detection laser
- Battery pack
- HMI post with side and rear obstacle avoidance lasers
- Status beacon
- Lynx Touchscreen (7" color HMI)
- Manual latch/unlatch buttons
- Auto cart coupling plate
- Charging dock

## Options and Peripherals:

- Lynx Auto Cart Base: ready to integrate
- MobilePlanner and MobileEyes software package
- Lynx Enterprise Manager 1100 fleet management solution
- Lynx Acuity localization package
- Joystick
- Lynx High Accuracy Positioning System
- Call Button / Door interface

## Payload Accessible I/O

- 802.11 a/b/g wireless
- Gigabit Ethernet
- 8 in / 8 out digital I/O
- User E-stop
- Regulated 5, 12 VDC @ 1 A
- RS-232 (2x)



**Adept Technology, Inc.** 5960 Inglewood Drive, Pleasanton, CA 94588

Tel: 925-245-3400 Fax: 925-960-0452 Email: [info@adept.com](mailto:info@adept.com)

[www.adept.com](http://www.adept.com)

Specifications subject to change without notice.

©2015 Adept Technology, Inc. ALL RIGHTS RESERVED. The information provided in this communication or document is the property of Adept Technology, Inc. and is protected by copyright and other intellectual property laws. In addition, any references to any Adept Technology, Inc. products are the marks and property of Adept Technology, Inc. [and may be registered trademarks]. All other trademarks or tradenames are the property of their respective holders.

## Downloads

Download CAD files for the Adept Lynx Cart Transporter from <http://www.adept.com>