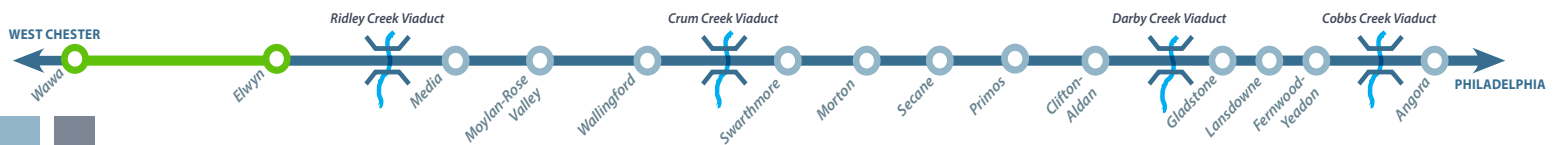


ELWYN TO WAWA

SERVICE RESTORATION PROJECT

MIDDLETOWN TOWNSHIP AND CHESTER HEIGHTS BOROUGH

DELAWARE COUNTY, PA



SEPTA is restoring Regional Rail service on the Media/Elwyn Regional Rail Line from the current terminus at Elwyn, Delaware County to a new terminus in Wawa, Delaware County along the existing right-of-way, referred to as the West Chester Branch.

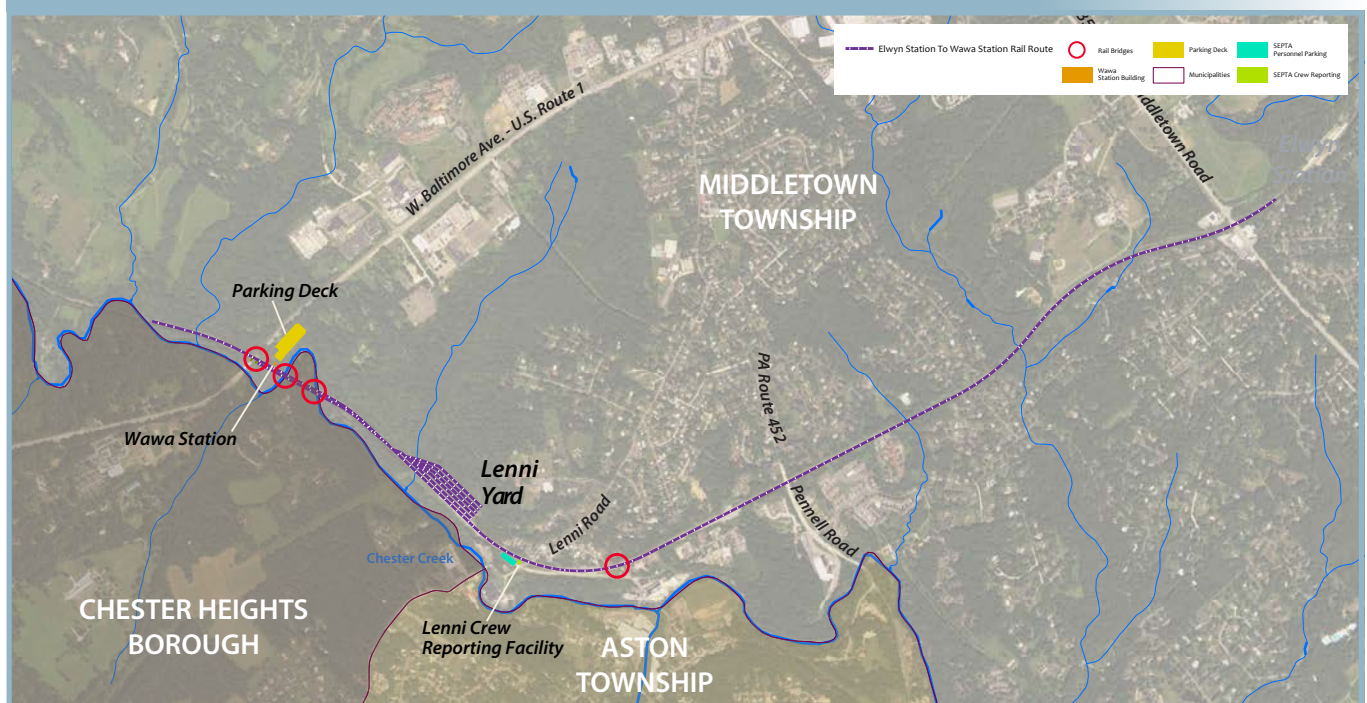
The new terminus at Wawa will include a fully accessible station building with restroom facilities, a high-level center-island platform, a 600-car parking deck and pedestrian underpass with accessible ramps and stairways. The project also includes the replacement of the railroad bridge over U.S. Route 1, the construction of a new traffic intersection and access road connecting U.S. Route 1 to Wawa Station, improvements to the grade crossing at Lenni Road, and the replacement of the rail bridge over Lungren Road. Finally, expanded rail yard facilities and a crew reporting building will be constructed on SEPTA property in Lenni.

Updates will be posted at: <http://septa.org/rebuilding/station/elwyn-wawa.html>

Conceptual Rendering of the Wawa Station Platform

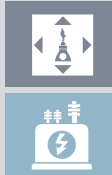
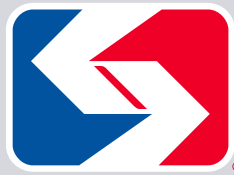


Elwyn to Wawa Service Restoration Project



For more information please contact: ElwyntoWawa@septa.org

Learn more at: <http://septa.org/rebuilding/station/elwyn-wawa.html>



REBUILDING the System



ELWYN TO WAWA SERVICE RESTORATION

RIGHT OF WAY IMPROVEMENTS AND NEW TERMINUS AT WAWA STATION

Passage of Pennsylvania Act 89 creates a long term funding solution for critical highway and transit infrastructure needs across the Commonwealth. For the first time, this places SEPTA in a strong position to **reinvest** in and **rebuild** the system to provide safe, reliable service, while enhancing the travel experience for current and future customers by upgrading, rehabilitating, and replacing critical infrastructure including bridges, track, traction power systems, and vehicles.

THESE PROJECTS INCLUDE

- Replacement of 3.5 Miles of Track Bed and Track
- Replacement of Overhead Catenary System Including Support Structures
- Replacement of 4 Bridges and Rehabilitation of 5 Culverts
- New Stormwater Management, Slope Stabilization, and Retaining Walls
- Rail Yard and Crew Reporting Facility at Lenni
- New Fully Accessible Station Facilities at Wawa
- 600 Car Parking Deck at Wawa with Access Road from U.S. Route 1
- Enhanced Multimodal Connections at Station to SEPTA Bus Routes and Corporate Shuttles

COST

\$177,900,000

PLANNED COMPLETION

2021

PROJECT FUNDED BY:



U.S. Department of Transportation
Federal Transit Administration



pennsylvania
DEPARTMENT OF TRANSPORTATION



For information regarding the SEPTA Rebuilding the System Program, including design and construction opportunities, visit www.septa.org/rebuilding