

Apologies for the tiny printed numbers in the brochure!

It was a valuable lesson to find out that something that is readable on my computer may not be readable when printed on paper. I have reprinted the giving guide section of the brochure and “pulled out” those numbers into a text box next to each chart. So sorry for the confusion – and the eye strain!

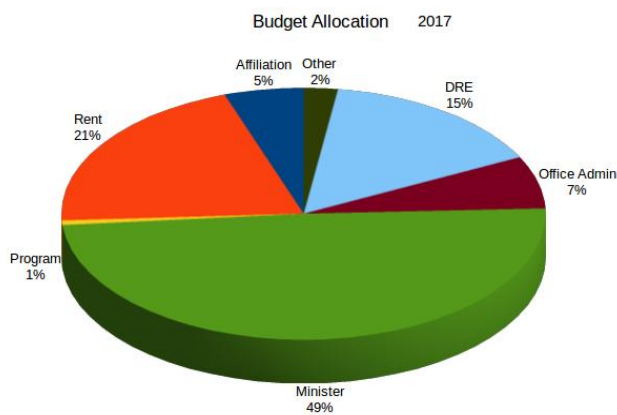
DeAnna Alm, Canvass Co-Chair

Mission Peak UU 2017-2018 Giving Guide

In this current time of political upheaval, we members of MPUUC may be having a more difficult time than before in deciding on our level of giving. We would ask you, however, not just to maintain your current level of financial support for this dearly-held institution, but to stretch to **INCREASE** it. If we wish to maintain MPUUC as a place where we can nurture our most important values, and reflect those values out into the community, our contributions will need to grow.

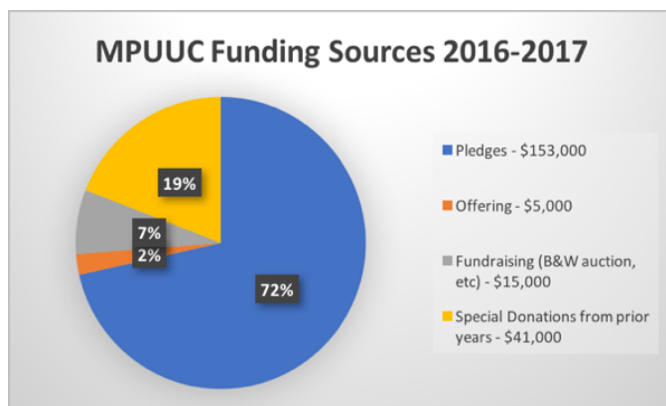
This budget allocation chart shows that our two highest expenses are paying our minister and renting our facility—numbers very unlikely to decrease in the coming year.

Total expenses budgeted for operations and on-going special funds: \$213,686



Minister	49%
Rent	21%
DRE	15%
Office Admin	7%
Affiliation	5%
Other	2%
Program	1%

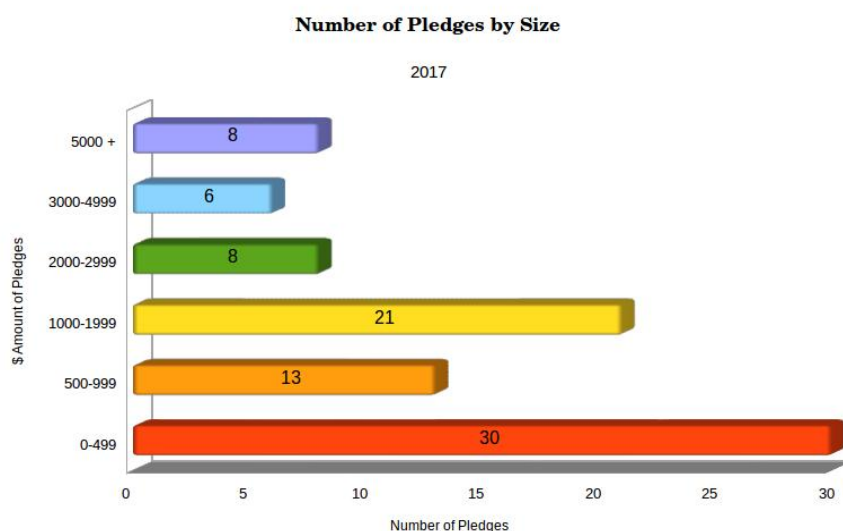
As you can see from the chart below, almost **20%** of our budget has been funded by the special anonymous donations we have received in previous years. This is plainly unsustainable.



Pledges	\$153,000
Offering	\$5,000
Fundraising (B&W Auction, etc)	\$15,000
Special Donation from Prior Years	\$41,000

While all committee budgets have been slashed in our attempt to reduce expenses, in order to close the deficit ***we must increase pledges and fundraising.***

What Do We See in our Current Pledges?



30 pledges of \$0-499/year

13 pledges of \$500-999/year

21 pledges of \$1000-1099/year

8 pledges of \$2000-2999/year

6 pledges of 3000-4999/year

8 pledges of \$5000 or more/year

In 2016-2017 we had 117 members and pledging friends.

- This works out to a cost to MPUUC of **\$1826** per member.
 - On a per member/pledger basis, **22** individuals pledged at least \$1826.
 - Our average pledge was **\$1306**;
 - **31** individuals pledged above this amount
 - **86** pledged less
- **If you pledge below \$1306, our average annual member pledge, can you make a goal of reaching it?**
- **If you pledge above \$1306, can you stretch closer toward \$1826, the per person cost of keeping MPUUC operating?**

For everything that you do now for Mission Peak Unitarian Universalist
Congregation, and for all that you commit to do to keep our beacon of hope shining
brightly,

WE THANK YOU!