



Philips Remote Device Manager

Version 3.7

Release announcement

Overview

NEW FEATURES IN PRDM V3.7	4
New architecture (IIS web service).....	4
Philips SpeechAir support incl. network and application handling	5
Philips SpeechMike premium touch support	11
Improved template configuration	12
Improved navigation speed	13
NO SUPPORT FOR DPM 2 AND SPEECHMIKE 3 DEVICES	13
SUPPORTED UPGRADE SCENARIOS	13
SUPPORTED OPERATING SYSTEMS.....	14
AVAILABILITY	14

Dear partner,

We are proud to announce the upcoming release of our Philips Remote Device Manager V3.7.

The main enhancements in this version are:

- **New architecture (IIS web service)**
- **Philips SpeechAir support incl. network and application handling**
- **Philips dictation recorder support (on SpeechAir and Android smartphones)**
- **Philips SpeechMike Premium Touch support**
- **Improved template configuration**
- **Improved management console**

If you have any questions, don't hesitate to contact your local Speech Processing Solutions organization.

With best regards,

Erik Anderssen

Product Manager



To protect the environment this document is optimized for online reading.
If it is required to print out this document please use the double-sided printing option.

NEW FEATURES IN PRDM V3.7

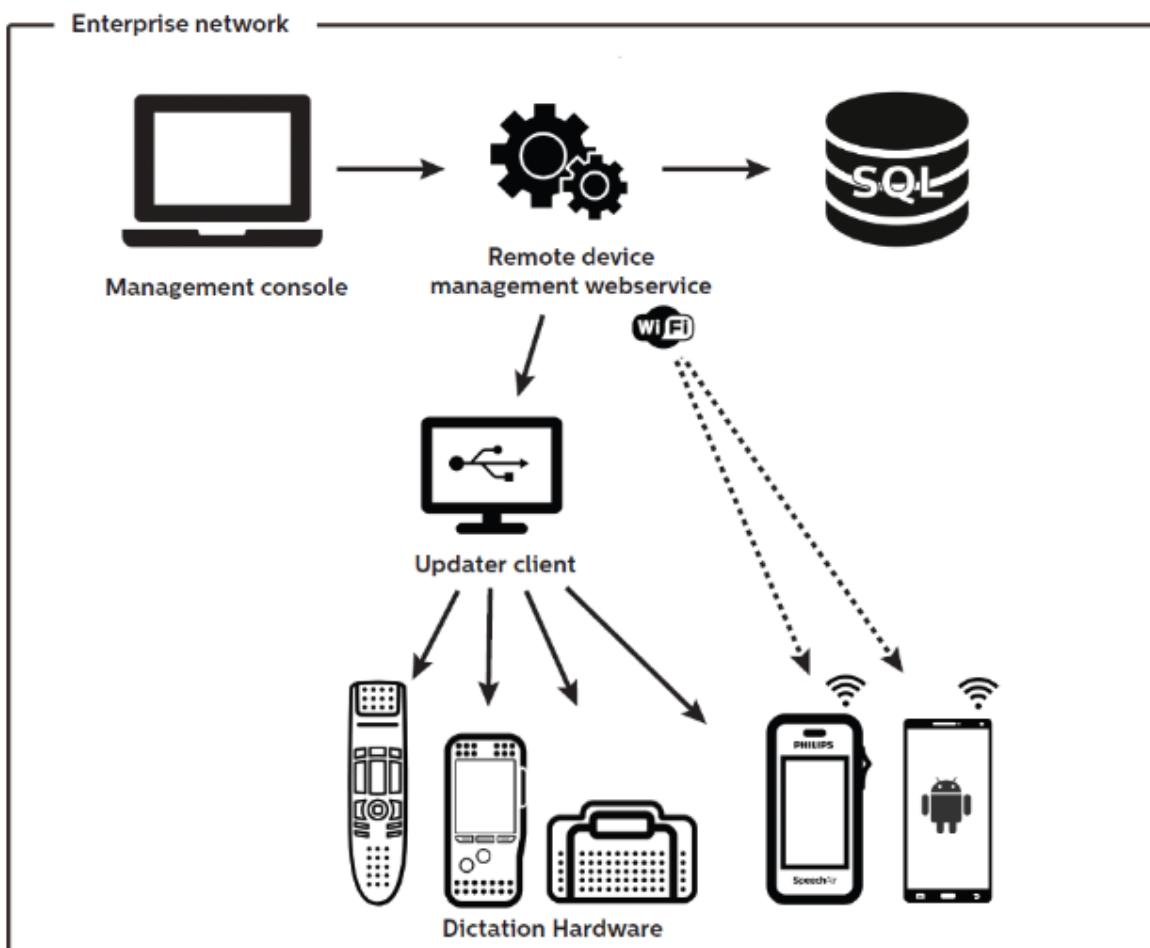
New architecture (IIS web service)

The architecture of the PRDM has been rebuilt to fulfill the use case of “wireless” updates for the SpeechAir and the Philips dictation recorder for Android.

This means that all the configuration that was done via the local service is now done via the IIS web service.

For the existing devices, such as SpeechMike, DPM and foot control, nothing changes. They will still get the configuration via the updater client.

This overview shows you the new structure of the PRDM server:



Philips SpeechAir support incl. network and application handling

The PRDM has now been enhanced to support the Philips SpeechAir device via USB connection as well as via WiFi. This means the device (Android OS) as well as the preinstalled Philips dictation recorder (PDR) can be fully configured.

The configuration editor in PRDM always shows both Android OS and PDR configuration tabs, regardless whether the PDR is installed on the device or not.

Configuration Editor

LFH: 1000
 Serial: 00001234
 Organizational Unit: Org Unit A
 Comment:

Apply template

Operating system: Philips Dictation Recorder

Setting name	Last known value	Locked	Value	Status
General				
Server address	https://prdm.last.company.com/P...	<input checked="" type="checkbox"/>	<input type="text"/>	Please enter a value
Poll interval	1 day	<input checked="" type="checkbox"/>	8 hours	
Wireless & Networks				
Enabled	Yes	<input type="checkbox"/>		
WLAN networks	airport, homenetA, homenetC, ho...		<input type="button" value="Click to select networks..."/>	
Enabled	Yes	<input type="checkbox"/>		
Bluetooth	Off	<input type="checkbox"/>		
VPN	On	<input type="checkbox"/>		
LAN Adapter				
Enabled	Yes	<input type="checkbox"/>		
DHCP Enabled	No	<input type="checkbox"/>		
IP Address	1.2.3.4	<input type="checkbox"/>		

Save as template Save Cancel

Initial setup

1. Register device in the management console (SpeechAir)

Before a SpeechAir device can get its configuration, it must be registered in the management console (same as for Digital Pocket Memos and other dictation hardware). There are various ways to add a device, but we recommend attaching the device to a PC that has the PRDM updater client installed.



The device will then show up in the “NEW DEVICES” folder. Now the serial number of the SpeechAir can simply be moved to the corresponding organization unit via drag and drop. The device can now be disconnected.

2. Get first configuration

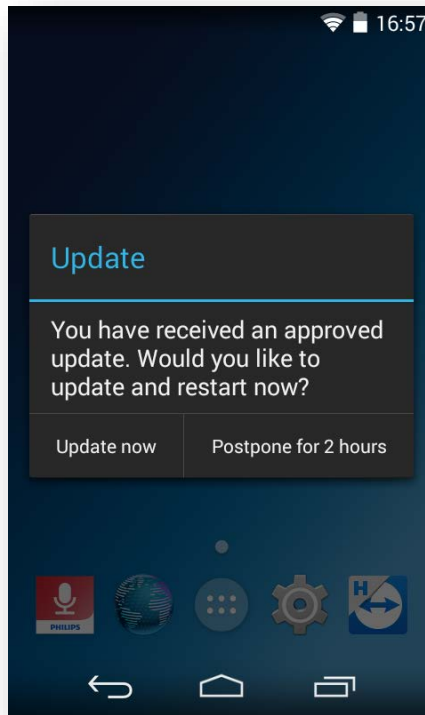
There are two configuration levels that can be set:

- a) Group configuration
- b) Device configuration

The group configuration should include the general information that is valid for all SpeechAir devices in the organization unit (e.g. URL to access the PRDM web service). The device configuration is important for dedicated information (e.g. Author name).

Once you have finished a configuration (it should at least contain the URL for the PRDM web service), it's time to transfer it to the device. To do this, reconnect the SpeechAir with the PC that has the PRDM updater client installed and wait for the balloon message on the right lower side of your screen saying that the device has been updated.

Now disconnect the device again – you should see the following pop-up message:



Choosing “Update now” will restart the device and apply the selected configuration. The update can be postponed 3 times until the update is mandatory.

Application management

There is a new tab in the management console called “Applications”. In this tab, the administrator can add and remove applications that should be installed on the SpeechAir.

Management Console

Server Author-PIN link Keyword distribution Refresh Exit

Configuration Firmware files Applications Images Introduction Troubleshooter

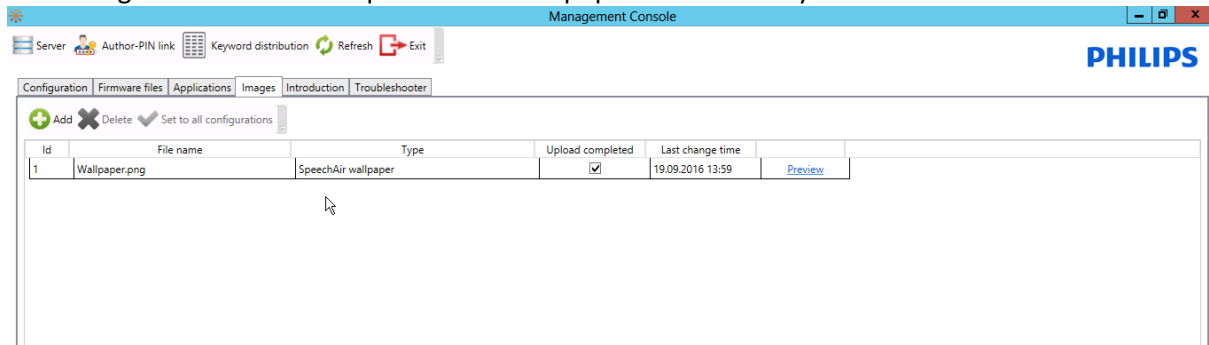
+ Add - Delete

Id	Display name	Version name	Package name	Type	Completed	Last change time	File name
1	Dictation		com.speech	Uninstallable			
3	Host		com.teamviewer.host.market	Uninstallable			
2	QuickSupport Add-On AOSP 5		com.teamviewer.quicksupport.a	Uninstallable			
4	TeamViewer		com.teamviewer.teamviewer.ma	Uninstallable			

The administrator can add .apk files by clicking the “Add” button.

Add Wallpapers

To add wallpapers that can be chosen in the SpeechAir configuration, the administrator goes to the “Images” tab and then uploads the Wallpaper to the library.

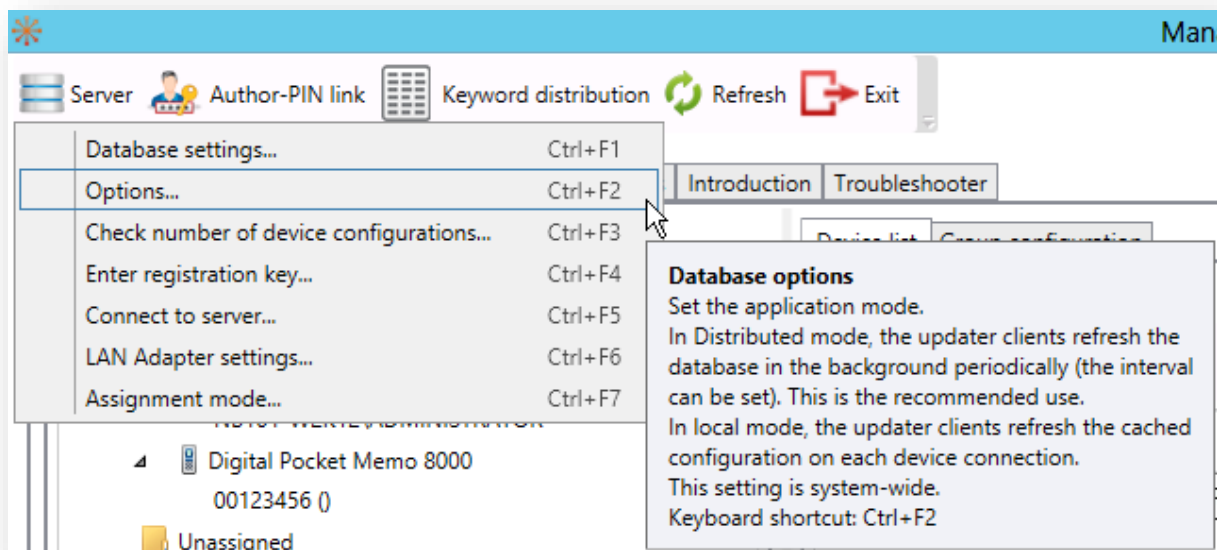


The SpeechAir wallpaper must be uploaded in .jpg or .png format. Its recommended size is 800x480 pixels to match the screen resolution of the SpeechAir device.

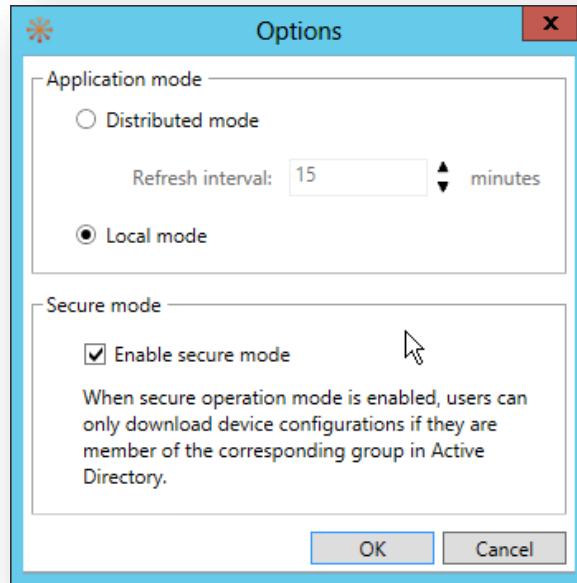
WiFi and security settings

To be able to configure WiFi connections as well as security settings (PIN/Password) the administrator has to activate the “secure mode”. This mode requires a license for remote device manager as well as that the administrator is part of the “RDMAAdmin” group in active directory and has activated windows authentication to make sure that no user can get hold on sensitive data.

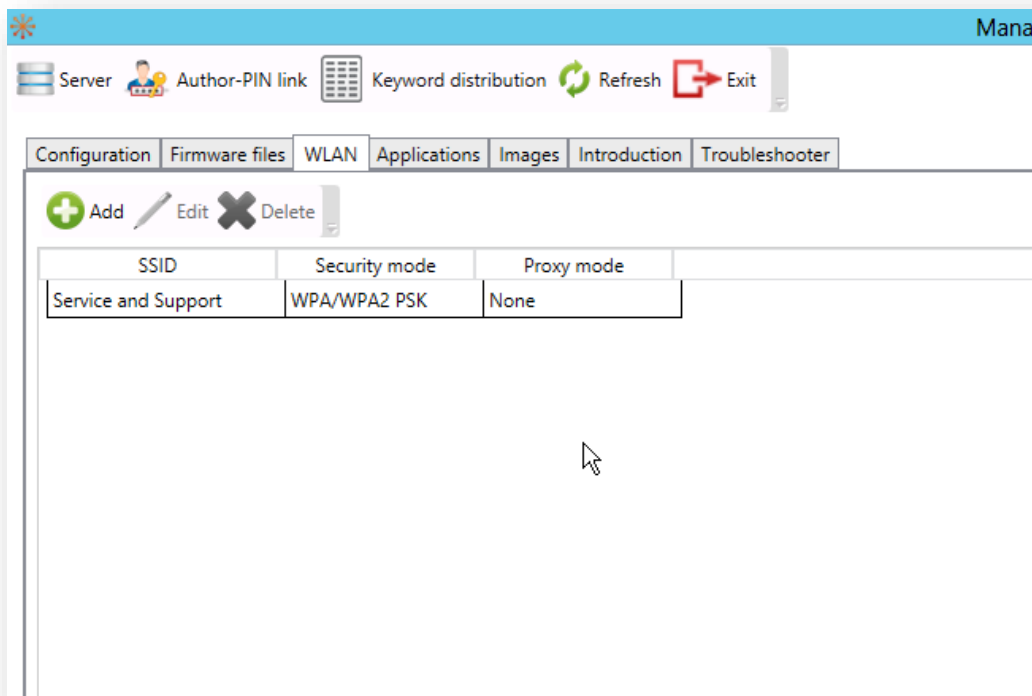
The secure mode can be set under Server/Options.../



Now check the box for “Enable secure mode”



After the secure mode has been enabled there will be new settings available. First of all, the administrator has a new “WIFI” tab in the management console. In this tab the administrator can add and remove relevant networks and assign them to a configuration in a second step.





In the SpeechAir configuration the screen lock mode can now also be set and the administrator can choose to roll out passwords or PINs to the devices. Also in the PDR settings password related settings are now visible.

Organizational Unit

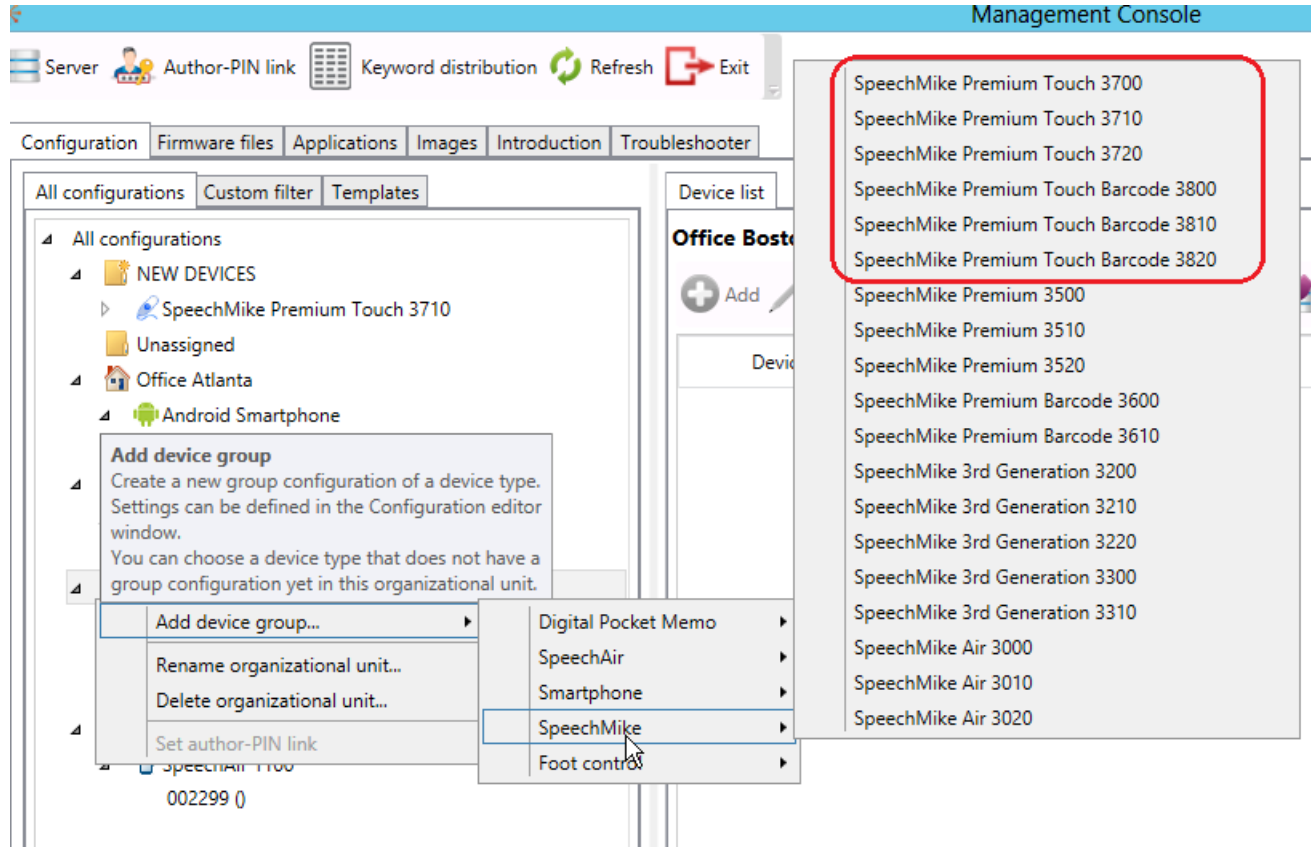
Comment

Operating system

Setting name	Locked	Value	Statu
Allow apps to access the location...	<input type="checkbox"/>		
^ Security			
Screen lock	<input checked="" type="checkbox"/>	<input type="text" value="PIN"/>	
PIN	<input checked="" type="checkbox"/>	<input type="text" value="1234"/>	
Password	<input type="checkbox"/>		
Show owner info on lockscreen	<input type="checkbox"/>		
Owner Info	<input type="checkbox"/>		
Make password visible	<input type="checkbox"/>		
Allow unknown sources	<input type="checkbox"/>		

Philips SpeechMike premium touch support

In PRDM 3.7 we now also support the new SpeechMike Premium Touch device. The corresponding device groups have been added to the device list.



Improved template configuration

In this version of PRDM, the administrator can not only create a template out of a group configuration, but also use the device configuration as a template.

To improve the easiness of this process, the “Save as template” button is now visible on the bottom of any configuration page.

To apply a template, there is also a new button on the top of the configuration called “Apply template”.

The screenshot shows a window titled "Configuration editor" with a blue header. It contains several input fields: "LFH:" with the value "5260", "User name:" with "A\A6", "Organizational unit:" with a dropdown menu showing "Organizational Unit A", and a "Comment" field. An "Apply template" button is located to the right of the comment field. Below these fields is a table with the following columns: "Setting name", "Last known setting", "Overwrite", and "New setting". The table is divided into two sections: "Button events" and "Settings".

Setting name	Last known setting	Overwrite	New setting
Button events			
Instruction	n.a.	<input checked="" type="checkbox"/>	Instruction
Insert/Overwrite	n.a.	<input checked="" type="checkbox"/>	Insert/Overwrite
EOL	n.a.	<input checked="" type="checkbox"/>	EOL
Record	n.a.	<input type="checkbox"/>	
Forward	n.a.	<input type="checkbox"/>	
Play	n.a.	<input type="checkbox"/>	
Stop	n.a.	<input type="checkbox"/>	
Rewind	n.a.	<input type="checkbox"/>	
Rear button 1	n.a.	<input type="checkbox"/>	
Rear button 2	n.a.	<input type="checkbox"/>	
Left mouse button	n.a.	<input type="checkbox"/>	
Right mouse button	n.a.	<input type="checkbox"/>	
Scroll wheel button	n.a.	<input type="checkbox"/>	
Settings			
Enable ScrollWheel	n.a.	<input type="checkbox"/>	

At the bottom of the window, there are three buttons: "Save as template", "Save", and "Cancel". A "Show help" link is also present in the bottom left corner.

Improved navigation speed

By reorganizing the storage of the settings and the visibility of the navigation tree in the management console, we were able to improve the navigation speed in PRDM 3.7 significantly.

The improved settings tree in the SpeechAir and PDR settings make it possible to “hide” settings for an easy and clean overview.

The screenshot displays the settings management interface for a Philips Dictation Recorder. At the top, there are input fields for 'Product' (1100), 'Organizational Unit' (Office Boston), and 'Comment'. An 'Apply template' button is located to the right. Below this, the 'Operating system' is identified as 'Philips Dictation Recorder'. The main area is a table with columns for 'Setting name', 'Locked', 'Value', and 'Status'. The settings are organized into a tree structure:

- General** (expanded):
 - PRDM server URL * (Locked)
 - Refresh interval * (Locked)
- Wireless & Networks** (collapsed)
- Display** (collapsed)
- Apps** (collapsed)
- Location** (collapsed)
- Security** (collapsed)
- Language** (collapsed)
- System** (collapsed)

At the bottom left, there is a 'Show help' link. At the bottom right, there are 'Save as template', 'OK', and 'Cancel' buttons.

No support for DPM 2 and SpeechMike 3 devices

Existing group configurations for DPM2 and SpeechMike 3 devices will be imported, but the administrator will not be able to add new SpeechMike 3 and DPM2 device groups.

Supported upgrade scenarios

Upgrade is supported from versions:

v3.3.331.09

v3.6.360.34

Supported operating systems

The following operating systems are supported for the updater client:

- Windows 7 SP1 (32- and 64-bit)
- Windows 8.1 (32- and 64-bit)
- Windows 10 (64-bit)

The following operating systems are supported for the management console incl. SQL server and IIS web server:

- Windows Server 2008 R2 SP1
- Windows Server 2012 R2
- Microsoft SQL Server 2012 SP3
- Microsoft SQL Server 2014 SP1
- Microsoft SQL Server 2016

AVAILABILITY

Launch date is the 10.10.2016

The Remote device manager will be available on our website on 10th of October 2016 09:00 GMT+1.