



**PHILIPS**

**SpeechExec**

Enterprise dictation  
workflow solution

**Streamline**  
your workflow

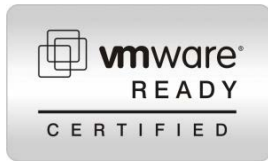
**SPEECH EXEC ENTERPRISE 5**

Release Announcement

SPEECH  
PROCESSING  
SOLUTIONS

Disclaimer:

CITRIX MAKES AND YOU RECEIVE NO REPRESENTATIONS OR WARRANTIES OF ANY KIND WITH RESPECT TO THE THIRD-PARTY PRODUCT, IT'S FUNCTIONALITY, THE TEST(S) OR THE RESULTS THEREFROM, WHETHER EXPRESS, IMPLIED, STATUTORY OR OTHERWISE, INCLUDING WITHOUT LIMITATION THOSE OF FITNESS FOR A PARTICULAR PURPOSE, MERCHANTABILITY, NON-INFRINGEMENT OR TITLE. TO THE EXTENT PERMITTED BY APPLICABLE LAW. IN NO EVENT SHALL CITRIX BE LIABLE FOR ANY DAMAGES OF ANY KIND WHATSOEVER ARISING OUT OF YOUR USE OF THE THIRD-PARTY PRODUCT, WHETHER DIRECT, INDIRECT, SPECIAL, CONSEQUENTIAL, INCIDENTAL, MULTIPLE, PUNITIVE OR OTHER DAMAGES.



# Table of Contents

<b>HIGHLIGHTS .....</b>	<b>7</b>
GENERAL IMPROVEMENTS .....	7
<i>Support for Hi-res (4K) monitors .....</i>	<i>7</i>
<i>SpeechExec Enterprise Health Scanner Service .....</i>	<i>7</i>
SECURE AUTHENTICATION FOR SEE CONFIGURATIONS.....	8
SPEECHEXEC ENTERPRISE CLIENTS .....	8
<i>Support for the new SpeechAir smart voice recorder .....</i>	<i>8</i>
IMPROVED FOOT CONTROL WIZARD.....	9
SUPPORT FOR THE SPEECHMIKE PREMIUM TOUCH.....	10
WARNING DIALOG FOR LEGACY DEVICES .....	10
IMPROVED DRAGON NATURALLYSPEAKING SUPPORT .....	10
<i>Supported Dragon editions .....</i>	<i>11</i>
NEW SPEECHEXEC ENTERPRISE SPEECH RECOGNITION SERVICE .....	12
IMPROVED COOPERATION BETWEEN ENTERPRISE MANAGER, MOBILE SERVER AND REMOTE DEVICE MANAGER.....	13
<i>Improvements for the Remote Device Manager (PRDM) .....</i>	<i>13</i>
<i>Improvements for the Mobile Server .....</i>	<i>13</i>
OTHER CHANGES AND IMPROVEMENTS .....	13
<i>SpeechExec Enterprise Statistics module.....</i>	<i>13</i>
<i>New Splash screens and icons .....</i>	<i>14</i>
CURRENT LIMITATIONS .....	14
<i>Information about Dragon 15 Professional Individual.....</i>	<i>14</i>
<i>Server 2016 Environments .....</i>	<i>14</i>
<i>Philips SpeechAir Management Software in virtual environments .....</i>	<i>14</i>
<b>MDCE QUICK FACTS .....</b>	<b>15</b>
<b>AVAILABILITY .....</b>	<b>16</b>
DOWNLOADS .....	16
DVD ORDERS.....	16
DOCUMENTATION ON THE DVD.....	16
<b>SUPPORT .....</b>	<b>16</b>
SUPPORT POLICY FOR LEGACY VERSIONS .....	16
BUG DEFINITION .....	17
SUPPORT FOR DRAGON NATURALLYSPEAKING .....	17
<b>SPEECHEXEC FEATURE LIST .....</b>	<b>18</b>
DICTATION SOFTWARE.....	18
TRANSCRIPTION SOFTWARE .....	23
ADMINISTRATION.....	26
IMPLEMENTED CHANGES.....	29
<i>New Features and implemented change requests.....</i>	<i>29</i>
<i>Solved issues.....</i>	<i>31</i>





## Dear Speech Processing Solutions partner,

With SpeechExec Enterprise 5 we started to make the core components fit for the challenges of future IT environments.

This does not only include a health scanner service, which watches the Workflow Manager and the Mobile server, but also the implementation of a secure SEE configuration data exchange between the server and the clients.

We also took care about increased requests for a harmonized central configuration of users using smartphone devices with the Philips dictation recorder apps. Therefore we created configuration interfaces between SpeechExec Enterprise, the 'on premise' Mobile server as well as the Philips Remote Device Manager (PRDM).

It goes without saying that SpeechExec Enterprise 5 supports the latest Philips dictation hardware devices – the SpeechAir, the SpeechMike Premium Touch and the latest Philips foot control range. All of them can be configured within the SpeechExec Enterprise clients (as well as with the PRDM).

For customers making use of the SpeechExec Enterprise speech recognition workflow we have implemented several enhancements. The clients now support all Dragon NaturallySpeaking 14 editions and we have implemented some frequently requested changes for speech recognition. For heavy users we now offer a dedicated 'Speech Recognition Service' that can be centrally configured via the Enterprise Manager.

### About this document:

This document is designed to give you a high level overview of news and improvements of SpeechExec Enterprise 5.

If you have any further question on SpeechExec Enterprise 5 or on this document please feel free to contact your local Speech Processing Solutions organization.

With best regards,  
Wolfgang Spannlang  
Senior Product Manager



To protect the environment this document is optimized for online reading.  
If it is required to print out this document please use the double-sided printing option.  
The document format is optimized to be printed as LETTER format.

# HIGHLIGHTS

## GENERAL IMPROVEMENTS

### SUPPORT FOR HI-RES (4K) MONITORS



In current IT environments hi-res (4K) monitors are commonly used. Since hi-res monitors make all displayed texts and icons very small the users tend to increase the zoom rate to the maximum possible e.g. 200% rate to be able to see the icons and texts in an acceptable size.

SpeechExec Enterprise 5 applications now support these zoom rates without running into strange UI effects experienced in previous versions.

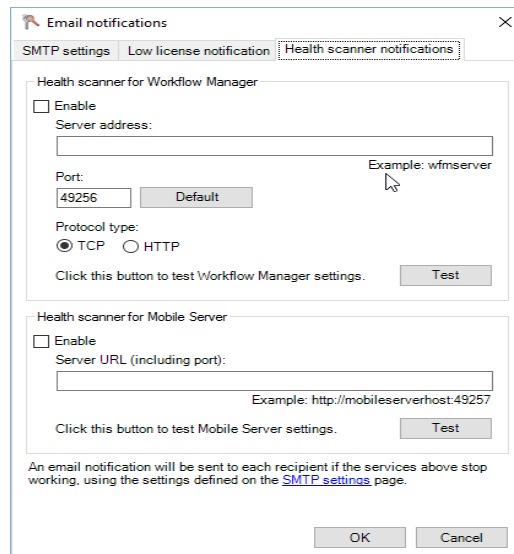
### SPEECHEXEC ENTERPRISE HEALTH SCANNER SERVICE



The new SpeechExec Enterprise Health Scanner (SEHS) provides the following functions:

- It periodically connects to the Mobile Server and the Workflow Manager
- It “pings” them as health check
- It receives the result of the health check...
- ...and notifies system administrators via email in case of server connection problems

The SEHS is a sub-system of the current Enterprise License Server which reuses the emailing capabilities of the License Server. The configuration of the Enterprise License Manager has been extended with an additional tab in the e-mail notification settings.



Screenshot from the UI prototype

## SECURE AUTHENTICATION FOR SEE CONFIGURATIONS



SpeechExec Enterprise 5 now provides a new option to receive the configuration information via a secured SEE configuration IIS web service instead of a simple root folder in the network.

The new option helps to resist security tests in high security IT environments.

## SPEECHEXEC ENTERPRISE CLIENTS

### SUPPORT FOR THE NEW SPEECHAIR SMART VOICE RECORDER



The SpeechAir smart dictation recorder is the latest Speech Processing Solutions Innovation.

Besides the wireless capabilities of the SpeechAir it can also be used like a Digital Pocket Memo. At the beginning this option even might be the preferred option for traditional Digital Pocket Memo users.

Equal to the Digital Pocket Memo, users can simply connect the SpeechAir to the PC and download dictations to the predefined destination via SpeechExec.

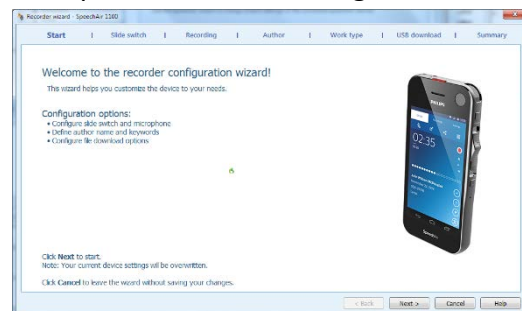
#### Device configuration

To change the SpeechAir settings users can start the new SpeechAir wizard, or the new Philips SpeechAir management software (PSAM) which is installed in parallel with SpeechExec.

#### SpeechAir wizard

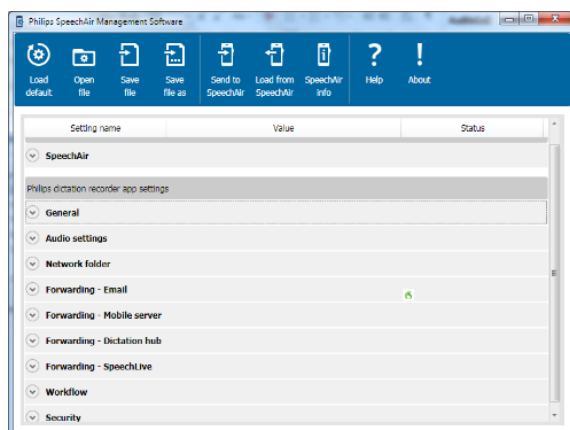
Equal to the DPM wizard the SpeechAir wizard provides basic configuration options:

- Slide switch settings
- Microphone settings
- Author name
- Available work types
- Download and delivery options



#### SpeechAir management software





### Using the PC download option

With the traditional download option SpeechAir dictations can be routed to the predefined local network folder for transcription similar as a DPM.

SpeechAir dictations can also be directly routed into a locally installed Dragon Naturally speaking speech recognition engine.

#### D Note:

In opposite to a Digital Pocket Memo it is not possible to control the SpeechExec Enterprise recorder with a SpeechAir. Please use the built in Philips dictation recorder app to record dictations on the SpeechAir.

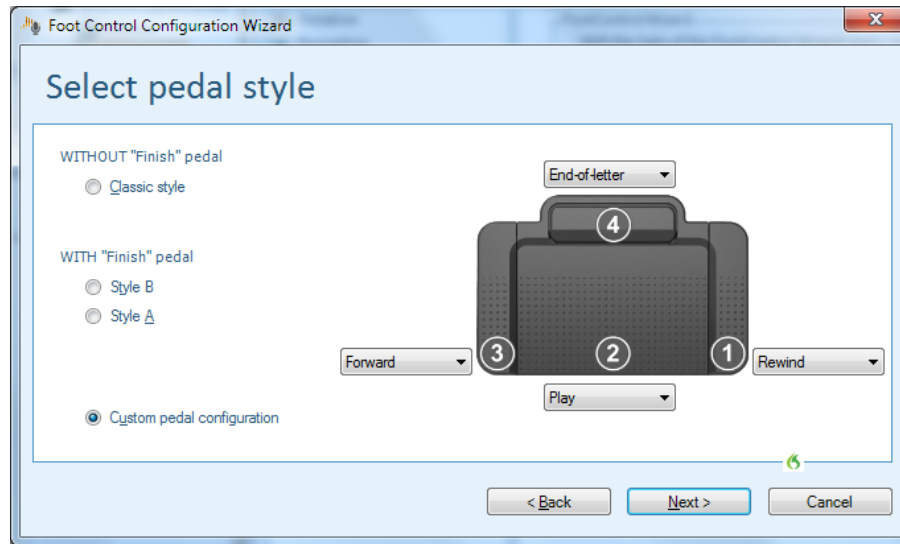
## IMPROVED FOOT CONTROL WIZARD



The foot control wizard in SpeechExec Enterprise 4.6 worked with a limited set of available configuration options.

Feedback from our customers showed that more flexibility in configuring the foot control pedals was required.

The new foot control wizard now not only provides the previous set of configuration options, but with the new 'Custom pedal configuration' option it also enables users to configure every single pedal according to their personal preferences.



## SUPPORT FOR THE SPEECHMIKE PREMIUM TOUCH



SpeechExec Enterprise 5.0 additionally supports the new SpeechMike Premium Touch devices SMP3700, 3710, 3800, and 3810.

The SpeechMike configuration wizard has been updated accordingly.

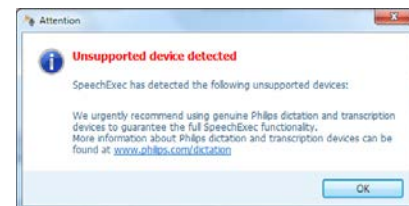
## WARNING DIALOG FOR LEGACY DEVICES



SpeechExec Enterprise 5 clients will display a warning dialog as soon as it detects a legacy device.

Per definition legacy devices are:

- SpeechMike 2 (52xx series)
- DPM3 9500, 9600 series

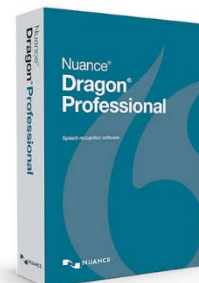


## IMPROVED DRAGON NATURALLY SPEAKING SUPPORT

The Dragon NaturallySpeaking support has been further improved.

SpeechExec Enterprise 5 contains following improvements:

- Reduced speech recognition profile training time for DPM profiles
- Improved DNS profile and error handling
- Reduced consumption of PC resources
- Support of Dragon 14 Professional Individual and Group
- Changeable font color in the online recorder, correction editor and template editor
- Backend speech recognition also from subfolders in Enterprise Transcribe



## SUPPORTED DRAGON EDITIONS

- Dragon Professional 12.5
- Dragon Legal 12.5
- Dragon Medical Practice Edition 2 (=Dragon Medical 12)
- Dragon Professional 13
- Dragon Legal 13
- Dragon Medical Practice Edition 3 (=Dragon Medical 13)
- Dragon Professional 14 Individual
- Dragon Professional 14 Group

## NEW SPEECHEXEC ENTERPRISE SPEECH RECOGNITION SERVICE



We have received frequent requests to provide the automated speech recognition function of Enterprise Transcribe as a service instead of an application. The advantage of a service instead of an application is that a service starts automatically after a system shutdown and the administrator does not have to do any manual operations to get speech recognition up and running again.

Like in SEE Transcribe the service picks up dictations from a predefined input folder and subfolder and recognizes them with the corresponding author profile.

### Configuring the service

The configuration of the service is done via the Enterprise Manager for a 'Typist' user that matches the user name which is running the service.

The service takes care about following settings from Enterprise Manager:

- Templates
- Input folder and subfolder definition
- SMTP email settings for the user for warning emails
- License server settings

If changes have been done the service might need to be restarted to pick up the configuration changes.

### Warning messages

In case a dictation could not be automatically recognized, the administrator or an office manager can receive warning messages from the service.

The email contains following information:

- Timestamp of job failure
- Full path of input folder
- Name of file
- Reason code of failure
- Reason text of failure
- Exception details if available

### License orders

To enable the service, customers need to order a new 'Speech Recognition Service' License LFH7365/00 at SPS.

## IMPROVED COOPERATION BETWEEN ENTERPRISE MANAGER, MOBILE SERVER AND REMOTE DEVICE MANAGER

To provide an easier and consistent workflow setup especially for mobile users the configuration of groups, users and destination folders have been harmonized with SpeechExec Enterprise as follows:

- Enterprise Manager can import Users, Group assignment of users and their roles (A/T) from Active Directory
- Remote Device Manager 3.8 imports Groups and Users from Active Directory
- Mobile Server imports mobile device assignments from the Enterprise Manager in a more user friendly way

### IMPROVEMENTS FOR THE REMOTE DEVICE MANAGER (PRDM)

The PRDM will provide an Active Directory Groups and Users import wizard. PRDM can create, update, move or delete organizational units and configurations based on group hierarchy and user assignment in Active Directory.

### IMPROVEMENTS FOR THE MOBILE SERVER

A major change has been done in the Enterprise Manager to introduce the new User->Mobile Device mapping

With this mapping the Mobile Server will automatically retrieve the relation User<->DeviceID from Enterprise.



## OTHER CHANGES AND IMPROVEMENTS

### SPEECHEXEC ENTERPRISE STATISTICS MODULE

- Starting with SpeechExec Enterprise 5.0, **support** for **Oracle** databases in the Statistics server will **no longer** be **available**.
- Some 'Online time' queries led to wrong calculations. These miscalculations have been corrected.
- We will provide a document that explains the queries and options of the SEE Statistics module.

## NEW SPLASH SCREENS AND ICONS

SpeechExec Enterprise 5 comes with new splash screens and icons.



The design has been updated to fit into the new overall design line for SpeechExec products.

## CURRENT LIMITATIONS

### INFORMATION ABOUT DRAGON 15 PROFESSIONAL INDIVIDUAL

Since SpeechExec Enterprise is a dictation and speech recognition workflow system will need a connection to Dragon user profiles over the network.

This is only available in Dragon 'Group' editions, but not in 'Individual' editions.

Currently Nuance does not provide any Dragon 15 Group edition.

**Therefore we do not support Dragon 15 Professional Individual or Dragon 15 Legal Individual edition in this release.**

### SERVER 2016 ENVIRONMENTS

**SpeechExec Enterprise 5 will not support server 2016 environments yet.**

Tests in this environment are still ongoing and cannot be finished until the planned release date.

As soon as the tests are finished we will send out an update information.

### PHILIPS SPEECHAIR MANAGEMENT SOFTWARE IN VIRTUAL ENVIRONMENTS

Configuring the Philips SpeechAir in virtual environments like WTS, VMware, or Citrix is not supported with the Philips SpeechAir management software.

To configure the Philips SpeechAir in virtual environments we recommend to use the Philips Remote Device Manager (PRDM) instead.

## MDCE QUICK FACTS

### SPEECHEXEC ENTERPRISE 5

#### Overview

- Software for professional dictation and transcription workflow
- Manages the distribution of sound files and documents between authors and transcriptionists
- Future proof with built-in speech recognition workflow
- Improves the efficiency of the document creation process
- Can use highest security encryption
- Works in LAN and WAN (Internet) environments
- Saves investment by supporting 3<sup>rd</sup> party hardware

#### Available SpeechExec Enterprise modules

- **SpeechExec Enterprise 5 Foundation**
  - Enterprise Dictate – dictation client application
  - Enterprise Transcribe – transcription client application
  - Enterprise Manager (administration)
  - Enterprise License Server (for all modules)
  - Terminal Server, VMware and CITRIX extensions
  - Silent-setup information
  - Documentation
- **Workflow Manager**
- **Statistic module**
- **NEW – Speech recognition service module**

#### Smart phone options

- Mobile Server
- Philips Dictation Recorder for Blackberry
- Philips Dictation Recorder for iPhone
- Philips Dictation Recorder for Android
- Philips Dictation Recorder for Windows Phone 8

#### Other options

- Remote Device Manager (remotely configure Philips dictation hardware)

#### Test Installations

Test licenses are valid for 30 days and 20 users


Contact your local Speech Processing Solutions sales organization

#### License and Maintenance Agreement

MDC-E should complete, sign and then take/send 3 copies to the customer. All 3 should be sent to your local Speech Processing Solutions Sales organization.

#### 40 Selling Points...

1. One Philips brand solution
  2. 60 years of experience in professional dictation
- System management**
3. Active Directory synchronization – one user management, one login
  4. Central user administration & configuration
  5. Group definition
  6. Central workflow management
  7. User relations manager
  8. Multi-level administration
  9. Concurrent licenses
  10. Customized dictation metadata
  11. Customized client applications display
  12. Silent set up of client applications
  13. File based system – no database required
  14. Licenses available individually (minimum 10)
  15. Support of Citrix, Terminal Services & virtual environments
- Security**
16. Login security (optional)
  17. Support of 256-bit end-to-end DSS<sup>PRO</sup> encryption
  18. SSL encryption for email and FTP
- Workflow**
19. Attach files to dictations
  20. Record client/patient ID
  21. Quick filters and search options
  22. Interfaces with Dragon NaturallySpeaking Professional, Legal and Medical
  23. Frontend and backend speech recognition
  24. Sequenced recording for short turnaround time
  25. Download dictations from any workstation
  26. Simple download and transfer for the author
  27. Simple send/receive dictations via e-mail
  28. Simple send/receive dictations via e-mail FTP
  29. Worldwide solution/system access via Citrix/WTS
  30. Full integration with Philips hardware
  31. Barcode integration for better quality documents
  32. Support for third-party hardware
  33. Interface to third-party applications
  34. Dictation download in Mac environments
- Modules**
35. Modular – tailor your workflow solution to your needs
  36. Workflow manager for scheduled tasks
  37. Statistics reporting for efficiency tracking
  38. Speech recognition service module for hassle free backend speech recognition of recorded dictations
  39. Smartphone integration with SpeechExec Mobile supporting Blackberry, iPhone, and Android devices
  40. Remote device management tool for central configuration of Philips dictation hardware
- ...and many more

 **Note:** The maintenance agreement covers hot fixes, service releases, and version upgrades without additional costs

## AVAILABILITY

### DOWNLOADS

The SpeechExec Enterprise 5 modules shall be available for download for registered MDC-E partners from the partner area of the [Speech Processing Solutions website](#) (partner login is required) approximately week 03, 2017.

### DVD ORDERS

Software DVDs can be requested from the local Speech Processing Solutions organization after the release.

Back to [Table of contents](#)



### DOCUMENTATION ON THE DVD

The user manuals and information for administrators can be found on the DVD in the folder:  
..\01\_Documentation\

## SUPPORT

### SUPPORT POLICY FOR LEGACY VERSIONS

Our support policy for software products grants the support of the current version (latest build only) and the **LAST** predecessor versions (also latest build only).

This means that:

- According to this policy we will **discontinue support** for all SpeechExec Enterprise **3.x** installations with the release of SpeechExec Enterprise 5.
- To ensure that your software will be within the current support window, please use the upgrade option to upgrade all SpeechExec Enterprise 1.x, 2.x and 3.x installations to the latest version.



## BUG DEFINITION

Bugs are categorized in 3 classes:

**Showstopper:** Showstopper bugs are errors that cause a system crash or data loss when using the SpeechExec system within the specification and there is no workaround available. If any showstopper bugs are discovered Speech Processing Solutions will do its best effort to provide a solution within the shortest possible time with a hot fix, provided that the customer is willing to cooperate with us to reproduce the error (e.g. sending log files, enabling remote sessions, agreeing to customer visits, etc..)

**High:** Bugs in this category do not cause data loss or a system crash when using the SpeechExec system within the specification, but they are annoying and happen quite frequently. In most cases there is a workaround available. Speech Processing Solutions will try to provide a fix with the next major release.

**Low:** Low bugs are errors that happen rarely and are only reported from a single user when using the SpeechExec system within the specifications. In most cases workarounds are available. Speech Processing Solutions reserves the right to decide whether a fix for low bugs is provided with one of the next major releases.

### ! IMPORTANT:

- Bug fixes **do not** include support for new PC environments (e.g. operating systems), functions and features, nor do they include support for any new dictation/transcription hardware.
- For every bug fix it is required that the bug can be reproduced in the development department.
- Only the Speech Processing Solutions Field Complaint Team is entitled to decide whether reported issue is a bug or a change request. Furthermore the categorization will be made by the team as well based on the input provided by the customer and the support chain.
- The final decision on the bug categorization and the realization of a bug fix lies within the rights of Speech Processing Solutions.

## SUPPORT FOR DRAGON NATURALLY SPEAKING

In case there are any problems with Dragon NaturallySpeaking Professional/Legal please refer to your local certified Dragon NaturallySpeaking Professional dealer.

A list of certified Dragon NaturallySpeaking Professional dealers can be found under: [www.nuance.com](http://www.nuance.com)

In case there are any problems with Dragon Medical please refer to your local certified Dragon Medical dealer.

A list of certified Dragon Medical dealers can be found under: [www.nuance.com](http://www.nuance.com)

[Back to Table of contents](#)

# SPEECHEXEC FEATURE LIST

## DICTIONATION SOFTWARE

Status: SpeechExec 10 / SpeechExec Pro 10 / SpeechExec Enterprise 5		Date:	Oct. 2016
Specifications/ Version	Dictate 10	Pro Dictate 10	Enterprise Dictate 5
<b>Dictation Recorder functions</b>			
Finish / Suspend / Close dictation	- / - / ✓	✓ / ✓ / ✓ / ✓	✓ / ✓ / ✓ / ✓
Expanded / Compact view/ configurable	✓ / ✓ / -	✓ / ✓ / ✓	✓ / ✓ / ✓ / ✓
Speed / Tone / Volume control built in	- / - / ✓	✓ / ✓ / ✓ / ✓	✓ / ✓ / ✓ / ✓
Selection of preferred Recording device	-	✓	✓
Recording Volume control	-	✓	✓
Audio volume meter	✓	✓	✓
Graphical position indicator	✓	✓	✓
Display of current position and file length	✓	✓	✓
Configurable display of dictation properties	✓	✓	✓
Configurable repeating of previous dictation properties	-	-	✓
Fast Forward, Rewind, Skip to begin, Skip to end	✓	✓	✓
Adding of comments	✓	✓	✓
Definition of Work Type / Transcriptionist	-	✓	✓
Target folder selection in Recorder	-	-	✓
Definition of priorities	✓	✓	✓
Real-time counter	✓	✓	✓
Remaining time display	-	✓	✓
DSS / WAV / WMA / MP3 (CBR) playback	✓ / ✓ / ✓ / ✓ / ✓ / ✓ ✓	✓ / ✓ / ✓ / ✓ / ✓ / ✓ ✓	✓ / ✓ / ✓ / ✓ / ✓ / ✓ ✓
Channel selection for two-channel playback	✓	✓	✓
Index / Special- / Spoken instruction playback	✓ / - / ✓	✓ / ✓ / ✓ / ✓	✓ / ✓ / ✓ / ✓
DSS or WAV recording	-	✓ / ✓	✓ / ✓
DSS Pro recording	-	✓	✓
DSS Pro encryption	-	✓	✓
Insert / Overwrite mode	-	✓	✓
Cut out or delete file sections	-	✓	✓
Set index / Spoken instruction recording (> 32 )	-	✓ / ✓ / ✓ / ✓	✓ / ✓ / ✓ / ✓
Record separate Special Instruction	-	✓	✓
Voice activation	-	✓	✓
Two-color record indicator	-	✓	✓
Record Notification / Record Standby beep	-	✓ / ✓	✓ / ✓
End of Memory Warning	-	✓	✓
Audible scan	-	✓	✓
Automatic backspace	-	✓	✓
Single handed PC dictation with SpeechMike	-	✓	✓
Selection of preferred Playback device	✓	✓	✓
Push-to-dictate Recording with SpeechMike	-	✓	✓
Append mode Recording	-	✓	✓
Hands free dictation via foot control	-	✓	✓
Operation via configurable hot keys	-	✓	✓

Status: SpeechExec 10 / SpeechExec Pro 10 / SpeechExec Enterprise 5		Date:	Oct. 2016
Specifications/ Version	Dictate 10	Pro Dictate 10	Enterprise Dictate 5
Fail-safe network independent recording	-	✓	✓
Sequenced Recording	-	✓	✓
<b>DRAGON NATURALLYSPEAKING Speech recognition functions**</b>			
<b>General speech recognition functions</b>			
Support of Dragon NaturallySpeaking 12.x, <b>13, 14</b> Professional, Legal, or Dragon Medical Practice edition <b>3</b>	✓	✓	✓
Use of Dragon Local/Roaming profiles on client PCs	-/-	✓/✓	✓/✓
Selectable Dragon user profile	-	✓	✓
Dragon user profile creation from SpeechExec	-	✓	✓
Use of 2nd dictation source for portable devices	-	✓	✓
Support of RTF document templates according to author AND/OR worktype with start position definition	-	✓/✓	✓/✓
Automatically template filling of dictation properties	-	-	✓/✓
<b>Back end speech recognition</b>			
Seamless back-end speech recognition from Digital Pocket Memo	-	✓	✓
Routing of DPM dictations to speech recognition depending on keyword	-	✓	✓
Back-end speech recognition from digital dictations	-	✓	✓
Speech recognition queue for back-end speech recognition	-	✓	✓
Extraction of Spoken instructions to Special instructions before speech recognition	-	✓	✓
Export of dictation files to speech recognition interface	-	-	-
<b>Front-end speech recognition window</b>			
Secure speech recognition window	-	✓	✓
Configurable front-end user interface	-	✓	✓
Text formatting (bold, italicize, underline, color, bullets,..)	-	✓	✓
Start of Dragon audio setup wizard from front-end recorder window	-	✓	✓
Add or train words from online recorder window	-	✓	✓
SpeechMike control of front-end speech recognition	-	✓	✓
SpeechMike button programming with individual commands	-	✓	✓
SpeechMike control of speech recognition outside SpeechExec	-	✓	✓
Preconfigured SpeechMike buttons of frequently used speech recognition commands (Correction or Spell dialog, mark backwards, ...)	-	✓	✓
Copy/paste export function with SpeechMike button	-	✓*	-
SpeechMike F-key programming to Dragon standard/custom commands	-	✓/✓	✓/✓
Support of hands-free speech recognition with Philips foot control	-	✓	✓
Finish and archive documents from front-end speech recognition	-	✓	✓
Option for self-correction / secretarial correction	-	✓	✓
Creation of emails from front-end recorder window	-	✓	✓
Suspending of speech recognized documents	-	✓	✓
Automatic document export to predefined folder path	-	✓	✓
<b>Correction window</b>			
Configurable correction editor user interface	-	✓	✓
Text formatting (bold, italicize, color, underline, bullets,..)	-	✓	✓
Philips foot control / hand control support of correction window	-	✓/✓	✓/✓
Foot control pedal programming	-	✓	✓
Asynchronous playback	-	✓	✓
Finish and archive documents from front-end speech recognition	-	✓	✓
Suspending of speech recognized documents	-	✓	✓

Status: SpeechExec 10 / SpeechExec Pro 10 / SpeechExec Enterprise 5		Date:	Oct. 2016
Specifications/ Version	Dictate 10	Pro Dictate 10	Enterprise Dictate 5
Automatic document export to predefined folder path	-	✓	✓
<b>Adaptation</b>			
Adaptation after self-correction	-	✓	✓
Support of adaptation after secretarial correction	-	✓	✓
Adaptation queue for vocabulary extension and acoustic adaptation	-	✓	✓
Scheduled adaptation	-	✓	✓
<b>SpeechMagic Speech recognition functions</b>			
<b>General SpeechMagic speech recognition functions</b>			
Support of SpeechMagic 7 Release 4 in Finnish and German	-	-	✓
Use of Roaming profiles on client PCs	-	-	✓
Selectable SpeechMagic user profile	-	-	✓
SpeechExec Enterprise user profile creation from SpeechMagic	-	-	✓
Definition and utilization of system wide and individual Auto texts with jump points	-	-	✓
Option to start up SpeechMagic dictations from 3 <sup>rd</sup> party software	-	-	✓
<b>SpeechMagic front-end speech recognition window</b>			
Secure speech recognition window	-	-	✓
Configurable front-end user interface	-	-	✓
Text formatting (bold, italicize, underline, bullets,..)	-	-	✓
Start of SpeechMagic audio setup wizard from front-end recorder window	-	-	✓
Add or train words from online recorder window	-	-	✓
SpeechMike control of front-end speech recognition	-	-	✓
Copy/paste recognized text to 3 <sup>rd</sup> party application with SpeechMike buttons	-	-	✓
Support of hands-free speech recognition with Philips foot control	-	-	✓
Finish and archive documents from front-end speech recognition	-	-	✓
Option for self-correction / secretarial correction	-	-	✓
Manual export option of document from front-end SR window	-	-	✓
Specific command set	-	-	✓
Zoom IN/OUT in SR window	-	-	✓
<b>Dictation list window</b>			
Login	-	-	✓
- Login with Active Directory or LDAP Server credentials	-	-	✓
- Workstation independent loading of SE E user profiles	-	-	✓
Familiar folder view	✓	✓	✓
- Renaming of folders	✓	✓	✓
- Creation of sub folders	✓	✓	✓
Configurable dictation list columns	✓	✓	✓
Job status indication	✓	✓	✓
Multiple sorting options	✓	✓	✓
2- level filters	-	✓	✓
Quick Filters	-	✓	✓
Search	-	✓	✓
Priorities displayed in different colors	✓	✓	✓
Single-handed operation with SpeechMike	-	✓	✓
Start dictation with SpeechMike Record button	-	✓	✓
List view of dictations with date and time stamp	✓	✓	✓
Display of file name, work type, transcriptionist, etc	✓	✓	✓
Display of linked document	-	✓	✓

Status: SpeechExec 10 / SpeechExec Pro 10 / SpeechExec Enterprise 5		Date:	Oct. 2016
Specifications/ Version	Dictate 10	Pro Dictate 10	Enterprise Dictate 5
Operation via configurable hot keys	-	✓	✓
Start DPM download from dictation list	✓	✓	✓
Drag & Drop of dictations	✓	✓	✓
Send emails from dictation list	✓	✓	✓
Preview of email contents	-	✓	✓
Preview dictations/Special instructions in dictation list	✓	✓	✓
Change dictation state in dictation list	✓	✓	✓
Individual encryption/decryption of dictations	-	✓	✓
Encryption of documents alongside with dictations	-	✓	✓
Individual file format conversion	✓	✓	✓
Change dictation information from dictation list	✓	✓	✓
Synchronize dictations on re-established network connection	✓	✓	✓
Quick dictation list update <sup>1)</sup>	-	-	✓
Pinable and moveable panels	-	✓	✓
Waiting List	-	-	✓
Changeable User Interface Language	-	✓	✓
Speech recognition and adaptation queue panel	-	✓	✓
SpeechLive cloud based dictation workflow	o	o	-
- SpeechLive configuration	o	o	-
- SpeechLive upload panel	o	o	-
<b>SpeechLive Transcription Service (TS) support</b>			
SpeechScribe transcription service workflow	o	o	-
- Send selected dictations to TS after DPM and <b>SpeechAir</b> download	o	o	-
- Send selected dictations to TS after finishing a dictation with the SpeechExec recorder	-	o	-
- Send selected dictations to TS from the work list	o	o	-
- Recall (take over) dictations from the TS queue within 2 minutes after sending	o	o	-
- Receive transcribed documents in work list from transcription service	o	o	-
<b>SpeechLive speech recognition support*</b>			
<b>SpeechLive speech recognition workflow</b>	o	o	-
- <b>Send selected dictations to SR service after DPM or SpeechAir download</b>	o	o	-
- <b>Send selected dictations to SR service after finishing a dictation with the SE recorder</b>	-	o	-
- <b>Assign required speech recognition language per dictation</b>	o	o	-
- <b>Send selected dictations to SR service from the work list</b>	o	o	-
- <b>Receive transcribed documents in work list from transcription service</b>	o	o	-
<b>SpeechAir and DPM download</b>			
Automatic / manual download from Digital Pocket Memo (DPM) and <b>SpeechAir</b>	✓/✓	✓/✓	✓/✓
Automatic conversion at dictation finish/ DPM download ( <b>DPM only</b> )	✓	✓	✓
Automatic subfolder creation at download on DPM keyword 1-4 (5)	✓	✓	✓
Automatic dictation list display at DPM connection	✓	✓	✓
Automatic download to author specific folder	✓	✓	✓
Individual download folder selection	-	✓	✓
Automatic backup at download	✓	✓	✓
Automatic file renaming at download ( <b>DPM only</b> )	✓	✓	✓
Automatic file format conversion at download ( <b>DPM only</b> )	✓	✓	✓
Automatic / manual download from 3rd party devices	✓/✓	✓/✓	✓/✓
Configurable file size limit for downloads ( <b>DPM only</b> )	✓	✓	✓
Download to individual 'Finished' SpeechLive folder	o	o	-

Status: SpeechExec 10 / SpeechExec Pro 10 / SpeechExec Enterprise 5		Date:	Oct. 2016
Specifications/ Version	Dictate 10	Pro Dictate 10	Enterprise Dictate 5
<b>Hardware configuration</b>			
DPM Configuration wizard	✓	✓	✓
Advanced DPM configuration	✓	✓	✓
- Definition of mandatory entry fields (96x0,95x0, 9400,9450, 80x0 only)	✓	✓	✓
- Flexible definition of DPM keywords	✓	✓	✓
- Transmission of list with defined keywords to DPM/DT	✓	✓	✓
- Definition of date and time on DPM/DT	✓	✓	✓
- Definition of additional settings on DPM/DT	✓	✓	✓
SpeechMike configuration wizard	-	✓	✓
- Trackball speed	-	✓	✓
- Left or right handed mouse usage	-	✓	✓
- Barcode scanner configuration	-	✓	✓
SpeechMike Air configuration wizard	-	✓	✓
- Trackball configuration (speed, dynamic cursor, etc.)	-	✓	✓
- Trackball volume control	-	✓	✓
- Left or right handed mouse usage	-	✓	✓
- Power settings and warnings	-	✓	✓
Foot control configuration wizard	-	✓	✓
SpeechAir configuration wizard	-	✓	✓
SpeechAir Management software	-	✓	✓
<b>Workflow</b>			
Automatic file transfer (built in)	✓	✓	✓
Automatic / manual sending of dictations to recipient in network (LAN)	✓	✓	✓
Automatic / manual sending of dictations to recipient via e-mail / FTP	✓ / ✓	✓ / ✓	✓ / ✓
SSL authentication for e-mail and FTP	-	✓	✓
Automatic backup	✓	✓	✓
Automatic backup purge	-	✓	✓
Automatic encryption / decryption (HIPAA enabled)	- / -	✓ / ✓	✓ / ✓
Job notification for author (email)	-	✓	✓
Sound and document workflow	-	✓	✓
Support of format independent document templates according to author AND/OR work type	-	✓ / ✓	✓ / ✓
Automatic job routing according to author name	-	✓	✓
Automatic creation of subfolders with any keyword	✓	✓	✓
Automatic job routing according to work types	-	✓	✓
SpeechLive cloud based dictation workflow	o	o	-
SpeechLive transcription service workflow	o	o	-
SpeechLive speech recognition service workflow	o	o	-
<b>O...optional</b>			
<b>*...new function</b>			
**...in SpeechExec Pro speech recognition support requires a separate license which might be included in the product			
1) ... via Enterprise Manager			

Back to [Table of contents](#)

## TRANSCRIPTION SOFTWARE

Status: SpeechExec 10 / SpeechExec Pro 10 / SpeechExec Enterprise 5		Date:	Oct. 2016
Specifications	Transcribe 10	Pro Transcribe 10	Enterprise Transcribe 5
<b>Player functions</b>			
Finish / Suspend / Close dictation	✓/✓/✓	✓/✓/✓	✓/✓/✓
Large / Compact view	✓/ -	✓/✓	✓/✓
Speed / Tone / Volume control built in	✓/✓/✓	✓/✓/✓	✓/✓/✓
Audio volume meter	✓	✓	✓
Graphical position indicator	✓	✓	✓
Display of current position and file length	✓	✓	✓
Remaining time display	✓	✓	✓
Fast Forward, Rewind, Skip to begin, Skip to end	✓	✓	✓
Adding of comments	✓	✓	✓
Real-time counter	✓	✓	✓
DSS / WAV / WMA / MP3 (CBR) playback	✓/✓/✓/✓	✓/✓/✓/✓	✓/✓/✓/✓
Channel selection for two-channel playback	✓	✓	✓
DSS Pro playback	✓	✓	✓
DSS Pro decryption	-	✓	✓
Index / Special- / Spoken instruction playback	- / - / ✓	✓/✓/✓	✓/✓/✓
Skip to index / Spoken instruction	-	✓/✓/✓	✓/✓/✓
Audible scan	✓	✓	✓
Automatic backspace	✓	✓	✓
Operation via foot control	✓	✓	✓
Operation via configurable hot keys	-	✓	✓
Selection of preferred Playback device	✓	✓	✓
Fail-safe network independent operation	✓	✓	✓
<b>Speech recognition support**</b>			
<b>General speech recognition functions</b>			
Support of Dragon NaturallySpeaking 12.x, 13, 14 Professional, Legal, or Dragon Medical Practice edition 3	-	✓	✓
Use of Dragon Local/Roaming profiles on client PCs	-	✓/✓	✓/✓
Selectable Dragon user profile for DPM configuration	-	✓	✓
Use of 2 <sup>nd</sup> dictation source for portable devices	-	✓	✓
Support of document templates according to author AND/OR work type with start position definition	-	✓/✓	✓/✓
<b>Back-end speech recognition</b>			
Routing of dictations to speech recognition depending on keyword	-	✓	✓
Automatic back-end speech recognition from digital dictations on client PCs	-	✓	✓
Extraction of Spoken instructions to Special instructions before speech recognition	-	✓	✓
Export of dictation files to speech recognition interface	-	-	-
<b>Correction window</b>			
Configurable correction editor user interface	-	✓	✓
Text formatting (bold, italicize, color, underline, bullets,..)	-	✓	✓
Philips foot control / hand control support of correction window	-	✓/✓	✓/✓
Foot control pedal programming	-	✓	✓
Asynchronous playback	-	✓	✓
Finish and archive documents from front-end speech recognition	-	✓	✓
Suspending of speech recognized documents	-	✓	✓
Automatic document export to predefined folder path	-	✓	✓

Status: SpeechExec 10 / SpeechExec Pro 10 / SpeechExec Enterprise 5		Date:	Oct. 2016
Specifications	Transcribe 10	Pro Transcribe 10	Enterprise Transcribe 5
<b>Adaptation</b>			
Support of adaptation after secretarial correction	-	✓	✓
Adaptation after correction with local/roaming profiles on PCs only	-	✓ / ✓	✓ / ✓
Adaptation queue for vocabulary extension and acoustic adaptation	-	✓	✓
Scheduled adaptation	-	✓	✓
<b>Dictation list window</b>			
Login	-	-	✓
- Login with Active Directory or LDAP Server credentials	-	-	✓
- Workstation independent loading of SE E user profiles	-	-	✓
Familiar folder view	✓	✓	✓
- Renaming of folders	✓	✓	✓
- Creation of sub folders	✓	✓	✓
Single / multiple input folders	✓ / -	✓ / ✓	✓ / ✓
Configurable dictation list column display	✓	✓	✓
Job status indication	✓	✓	✓
Multiple sorting options	✓	✓	✓
2- level filters	-	✓	✓
Quick Filters	-	✓	✓
Search	-	✓	✓
Configurable filters	-	✓	✓
Priorities displayed in different colors	✓	✓	✓
Disable delete and renaming of files	✓	✓	✓
Start transcription by double clicking dictation in dictation list	✓	✓	✓
List view of dictations with date and time stamp	✓	✓	✓
Display of file name, work type, transcriptionist, etc.	✓	✓	✓
Display of linked document	-	✓	✓
Operation via configurable hot keys	-	✓	✓
Start DPM download from dictation list	-	✓	✓
Drag & Drop of dictations	✓	✓	✓
Send emails from dictation list	-	✓	✓
Send email notification from dictation list	-	✓	✓
Preview of email contents	✓	✓	✓
Preview dictations/Special instructions in dictation list	✓ / -	✓	✓ / ✓
Change dictation state in dictation list	✓	✓	✓
Individual encryption/decryption of dictations	-	✓	✓
Encryption of documents alongside with dictations	-	✓	✓
Individual file format conversion	-	✓	✓
Change dictation information from dictation list	✓	✓	✓
Synchronize dictations on re-established network connection	✓	✓	✓
Quick dictation Unarchiving	-	✓	✓
Quick dictation list update <sup>1)</sup>	-	-	✓
Pinable and moveable panels	✓	✓	✓
Changeable User Interface Language	✓	✓	✓
Speech recognition and adaptation queue panel	-	✓	✓
Carousel view	-	✓	✓
- SpeechLive configuration	0	0	-
- SpeechLive upload panel	0	0	-



Status: SpeechExec 10 / SpeechExec Pro 10 / SpeechExec Enterprise 5		Date:	Oct. 2016
Specifications	Transcribe 10	Pro Transcribe 10	Enterprise Transcribe 5
<b>SpeechLive Transcription Service (TS) support</b>			
SpeechLive transcription service workflow	0	0	-
- Send selected dictations to TS after DPM/SpeechAir download	0	0	-
- Send selected dictations to TS from the work list	0	0	-
- Recall (take over) dictations from the TS queue within 2 minutes after sending	0	0	-
- Receive transcribed documents in work list from transcription service	0	0	-
<b>SpeechLive speech recognition support*</b>			
SpeechLive speech recognition workflow	0	0	-
- Send selected dictations to SR service after DPM or SpeechAir download	0	0	-
- Assign required speech recognition language per dictation	0	0	-
- Send selected dictations to SR service from the work list	0	0	-
- Receive transcribed documents in work list from transcription service	0	0	-
<b>SpeechAir and DPM download</b>			
Automatic / manual download from Pocket Memo (DPM) and SpeechAir	-	✓/✓	✓/✓
- Automatic conversion at dictation finish/ DPM download	-	✓	✓
- Automatic subfolder creation at download on DPM keyword 1-4(5)	-	✓	✓
- Automatic dictation list display at DPM connection	-	✓	✓
- Automatic download to author specific folder	-	✓	✓
- Individual download folder selection	-	✓	✓
- Automatic backup at download	-	✓	✓
- Automatic file renaming at download (DPM only)	-	✓	✓
- Automatic file format conversion at download (DPM only)	-	✓	✓
Configurable file size limit for downloads (DPM only)	-	✓	✓
Automatic / manual download from 3rd party devices	✓/✓	✓/✓	✓/✓
Download to 'Suspended' folder on individual SpeechLive folder	0	0	-
<b>Hardware configuration</b>			
DPM Configuration wizard	-	✓	✓
Advanced DPM configuration	-	✓	✓
- Definition of mandatory entry fields (9400,9450 only)	-	✓	✓
- Flexible definition of DPM keywords	-	✓	✓
- Transmission of list with defined keywords to DPM/DT	-	✓	✓
- Definition of date and time on DPM/DT	-	✓	✓
- Definition of additional settings on DPM/DT	-	✓	✓
Foot control configuration	✓	✓	✓
SpeechAir configuration wizard	-	✓	✓
SpeechAir Management software	-	✓	✓
<b>Workflow</b>			
Automatic built in file transfer	✓	✓	✓
Automatic archive and purge	-	✓	✓
Automatic / manual sending of dictations in network (LAN)	-	✓	✓
Automatic receipt of dictations via e-mail / FTP	✓/ -	✓/ ✓	✓/ ✓
SSL authentication for e-mail and FTP	-	✓	✓
Automatic distribution of author notifications	-	✓	✓
Automatic backup	-	✓	✓
Automatic backup purge	-	✓	✓
Automatic encryption / decryption (HIPAA enabled)	- / -	✓ / ✓	✓ / ✓
Job notification for typist	-	✓	✓

Status: SpeechExec 10 / SpeechExec Pro 10 / SpeechExec Enterprise 5		Date:	Oct. 2016
Specifications	Transcribe 10	Pro Transcribe 10	Enterprise Transcribe 5
- Filtered notification	-	✓	✓
- Systray Job notification / reminder for transcriptionist	- / -	✓ / ✓	✓ / ✓
Sound and document workflow	-	✓	✓
Support of format independent document templates according to author AND/OR work type	-	✓ / ✓	✓ / ✓
Automatic startup of document templates	-	✓	✓
Automatic job routing according to author name at DPM/e-mail/FTP download	-	✓	✓
Automatic creation of subfolders with any keyword at DPM /e-mail/FTP download	-	✓	✓
Automatic job routing according to work types at DPM/e-mail/FTP download	-	✓	✓
Take over suspended dictation from other transcriptionist	-	✓	✓
SpeechLive cloud based dictation workflow	o	o	-
SpeechLive transcription service workflow	o	o	-
SpeechLive speech recognition service workflow	o	o	-
<b>o</b> ...optional			
<b>*...new function</b>			
**...in SpeechExec Pro speech recognition support requires a separate license which might be included in the product			
1) ... via Enterprise Manager			

Back to [Table of contents](#)

## ADMINISTRATION

Status:SpeechExec 10 / SpeechExec Pro 10 / SpeechExec Enterprise 5		Date:	Oct. 2016
	SpeechExec 10	SpeechExec Pro 10	SE Enterprise 5
<b>Administration</b>			
Automatic update via internet	✓	✓	-
Migration wizard for legacy systems	-	-	✓
Consolidated system file structure	o	o	✓
Local configuration of settings	✓	✓	✓
Configurable dictation properties	-	✓	✓
Secure configuration file handling via web service	o/-	o/-	✓
System wide configuration of users and settings	o/-	o/-	✓
- Definition of user relationships	o	o	✓
- Central Folder definition	o	o	✓
- Central definition of folder variables	-	-	✓
- Central Workflow definition	o	o	✓
- Individual lock of settings	-	-	✓
- Definition of work groups	-	-	✓
- Definition of default settings	-	-	✓
- Show / hide user interface buttons	-	-	✓
- 2- Level Filter configuration	-	-	✓
- Central configuration of dictation list columns display	-	-	✓
- Central configuration of Dictation Property display	-	-	✓
- Central configuration of user rights for editing and deleting of dictations		-	✓
Definition of new keywords	-	✓	✓ <sup>1)</sup>

Status:SpeechExec 10 / SpeechExec Pro 10 / SpeechExec Enterprise 5	Date:		Oct. 2016
	SpeechExec 10	SpeechExec Pro 10	SE Enterprise 5
Administration of Enterprise licenses	-	-	✓
Silent set-up with Microsoft installer	-	✓*	✓
Function and error logging	✓	✓	✓
Support of Groups	-	-	✓
- Group specific System Settings	-	-	✓
- Group specific Dictation Properties	-	-	✓
- User assignment to group	-	-	✓
Active Directory Support	-	-	✓
- multi level administration (system admins/group admins/controllers)	o	o	✓
- Synchronization with AD users & groups	-	-	✓
Login support	-	-	✓
- 2 security levels	-	-	✓
- automatic fetching of user profiles after login	o	o	✓
- automatic fetching of group system settings depending on login	-	-	✓
Interface to 3 <sup>rd</sup> party software	-	-	✓
Central creation of RTF templates for speech recognition	-	-	✓
<b>Speech recognition</b>			
<b>General speech recognition features</b>			
Definition of speech recognition window appearance	-	-	✓
Definition of Auto-save interval for speech recognition window	-	-	✓
Definition of SpeechMagic server settings	-	-	✓
Definition of 'Dictation Finished' behavior	-	-	✓
<b>Dragon NaturallySpeaking only features</b>			
Definition of correction window appearance	-	-	✓
Definition of 'Correction Finished' behavior	-	-	✓
Definition of templates with variables and jump points	-	-	✓
SpeechMike button configuration for SR commands	-	-	✓
Definition of DPM download and speech recognition settings	-	-	✓
Definition of adaptation settings	-	-	✓
Definition of back-end speech recognition settings	-	-	✓
<b>SpeechMagic only features</b>			
Auto text manager	-	-	✓
Definition of user profile settings	-	-	✓
<b>Licensing</b>			
License key with web activation	✓	✓	-
Concurrent Enterprise License <sup>2)</sup>	-	-	✓
Optional 30-day demo license	✓	✓	✓
<b>Other</b>			
Interface to Statistic/Reporting	-	-	✓
Interface to Workflow Manager	-	-	✓
Health scanner service for workflow manager and Mobile Server	-	-	✓
Interface to Mobile Server	-	-	✓
Interface to Remote Device Manager	-	-	✓
Interface to speech recognition service module	-	-	✓
DPM download on thin clients	-	-	✓
O...optional SpeechLive function			
*...new function			

Status:SpeechExec 10 / SpeechExec Pro 10 / SpeechExec Enterprise 5		Date:	Oct. 2016
	SpeechExec 10	SpeechExec Pro 10	SE Enterprise 5
1) ... via Enterprise Manager			

## IMPLEMENTED CHANGES

### NEW FEATURES AND IMPLEMENTED CHANGE REQUESTS

ID	Title
7112	Enterprise health scanner need to start scanning available services after a brief delay to allow services to start after a system restart
7062	Install Philips SpeechAir management module with EnterpriseDictate setup
7019	LogTool: Allow saving and emailing ZIP package of collected logfiles after zipping
7052	Move SEE modules into new folders in build script
7054	Change 'Reset Dragon NaturallySpeaking engine' text and 'Reset' link to contain "Restart" instead of "Reset" in EN and DE
6853	Create a summary document describing each statistics report in detail
7018	In WFM server setup, skip the "Desktop Experience" check in case the system is Server 2016
6947	New autorun design
6948	SEE clients must use new application icons
6981	The 'Reset' functionality must properly work for SpeechMike Touch devices.
7009	User Mobile Device assignment: save the user's finished folder
6581	High-DPI improvements
6840	General training renamed to Profile training
6549	Header of 'SpeechMike wizard' must use the same style as 'Foot Control wizard'
6797	Applications must have new icons
6602	Extend SpeechMike wizard with support of Premium II (touch) devices
6930	EntDict and EntTrans products must install the unified SLogTool v5.0
6946	New splash screen design
6833	Dragon 14 support
6834	Determine installed Dragon version and edition
6835	Dragon roaming support to distinguish between individual and group dragon editions
6836	Initial training of profiles (general training is now mobile training)
6837	Closing dragon profiles (ForceClose if dragonVersion >= 14)
6838	Displaying Dragon audio source names
6864	Setup change: Accessing the Enterprise configuration web service from ED and ET
6872	Offline recognition first level subfolder support
6873	Enterprise manager - Support settings for Offline recognition first level subfolders
6803	The result of the Dragon discovery process must be written into the application log, with the FATAL (USAGE) category (for support purposes).
6715	Enterprise Configuration Service: Setup changes
6723	SEENewDict must produce DNS14-compatible .dra files
6459	'Total online time per transcriptionist' and 'Average transcription online time per dictation' incorrectly transfers online time sums
6536	Extend 'Welcome' page of FootControl wizard
6537	'Select pedal style' page for 4-pedal devices in ET
6538	'Select pedal style' page for 4-pedal devices in ED
6539	'Select pedal style' page for 3-pedal devices in ET
6540	'Select pedal style' page for 3-pedal devices in ED
6541	Opening 'Foot Control wizard' from the 'New user wizard'

ID	Title
6543	Header of 'New user wizard' must use the same style as 'Foot Control wizard'
6544	No longer supported device' warning dialog for SpeechMike 2 and DPM3
6546	New DVD structure produced by the SpeechExec client build process
6550	New 'ListColumnXContent' dictation properties (SpeechAir)
6552	New 'SpeechAir configuration' top-level node
6553	New 'SpeechAir 'Download' sub-node
6554	New 'SpeechAir 'Device configuration' sub-node
6558	New SpeechAir wizard
6559	Enable automatic downloading from SpeechAir
6560	Worklist UI changes for SpeechAir
6564	Change 'DPM' to 'digital recorder' in Dragon speech recognition settings
6567	About box and splash screen changes
6570	Revision of 'DPM' texts
6743	Allow using folder %placeholders% for author profiles
6717	Enterprise Configuration Service: Add logging to service
6722	Dragon SR setting 'Run SE and Dragon on same CPU core' must be removed, related feature not executed
6815	Allow setting font color in Online recorder
6816	Allow setting font color in Correction editor
6817	Allow setting font color in Template editor
6603	About box must support SpeechMike Premium II (touch) devices
6609	Do not close online recorder's correction menu when putting SM Premium on the desk
6612	Default log level of DictController module must be set to FATAL
6625	Mobile Device assignment: add new tab in system configuration dialog of EM
6630	Mobile Device assignment: new 'User - mobile device assignments' window
6633	Mobile Device assignment: new 'Edit mobile device assignments' window
6638	Mobile Device assignment: Storage, save/load
6652	Upgrade .net version to 4.6.1 in all projects (assemblies)
6658	License manager - "Low license notifications" window title changed to "Email notifications"
6659	License manager - Email notifications - Move recipients textbox from Low license notifications tab to SMTP settings tab
6660	License manager - Email notifications - New Health scanner notifications tab hosting Workflow manager and Mobile server healthscanner settings
6661	License manager - Email notifications -Health scanner notifications tab - display not supported message if License Server interface version is < 2
6662	License manager - Email notifications - Controls for workflow manager health scanning
6663	License manager - Email notifications - Controls for Mobile Server health scanning
6665	License manager - Email notifications - SMTP settings must be the first tab displayed to the user and the first in tab order
6666	License manager - Email notifications - New validator class will validate all information coming from the UI before a test or save is performed.
6688	License manager - Email notifications - Main menu changes
6691	License manager - Email notifications - Testing the WFM connection
6692	License manager - Email notifications - Testing the MobileServer connection
6697	Enterprise Configuration Service: REST interface for testing server configuration by administrators
6698	Enterprise Configuration Service: REST interface for client configuration access
6703	Extending the License Server service with new HealthScannerTask
6704	License manager - Steps of periodic health scanning

ID	Title
6705	License manager - Email warnings
6706	License manager - About box
6708	Enterprise Configuration Service: Enabling web service access in Registry
6709	Enterprise Configuration Service: Connecting to the web service
6710	Enterprise Configuration Service: Downloading the configuration set
6711	Enterprise Configuration Service: User interface changes
6712	Update .net installer in Enterprise setups to .net 4.6.1
6851	Remove Oracle support from DBConfigTool and add unsupported note below oracle radio button

## SOLVED ISSUES

ID	Title
6273	SEE Trans notifications are not working correctly
7073	Terminal Server Extensions installed do not have the last version.
7094	Pointer speed can not be set in 4K resolution.
7095	Text cut in Speech Mike wizard.
7096	SE can not be opened after starting it in hidden mode in 4K resolution.
7115	Text cut in Foot Control wizard in 4K resolution.
7116	Error message by changing notification settings
7117	Notification pop up window is not completely displayed in 4K resolution.
7120	Bg: Enterprise Dictatate / Transcribe rejects dictation files with 'srstestemail_' prefix, only SRServer needs to do that
7124	Error message after restoring dictation
7125	OLH in SE player/recorder can not be called
7128	EM: Mobile Device Assignment - users listed twice
7090	DocLoc: Texts in OLH are mixed up and some font size are very small
7105	Philips SpeechAir Management Software does not start in 4K.
7106	SA Wizard does not overwrite the actual setting.
7092	SEE licenses are not displayed in SEE Manager.
7099	Error message by starting SEE Transcribe.
7101	LogTool: "Email package" button performs no action if it was already used without a set email client.
7081	Transcriptionists will be also imported by Mobile Server
7058	The text does not fit into BackEnd Server's autorun window
7084	Window is not completely displayed and cannot be resized.
7046	Temp config folders are not deleted if an error occurs during startup
6975	Wrong error message comes if "SEAdminsRoot" group does not exist in AD structure.
7022	Clicking 'Browse' on the 'Destination folder path editor' window showed a nullref exception error message
6855	Offline recognition in PT is running 2 times on a single file in the offline queue

Discover the comprehensive range of professional dictation products from Philips

[www.philips.com/dictation](http://www.philips.com/dictation)

Philips and the Philips' Shield Emblem are registered trademarks of Koninklijke Philips N.V. and are used by Speech Processing Solutions GmbH under license from Koninklijke Philips N.V.

SpeechMagic and Dragon NaturallySpeaking are trademarks of Nuance, Inc. and are used here under license.

All other trademarks are the property of their respective owners.

© 2016 Speech Processing Solutions GmbH. All rights reserved. Errors and omissions excepted.

Doc. No.: SPS\_T\_2300/16124